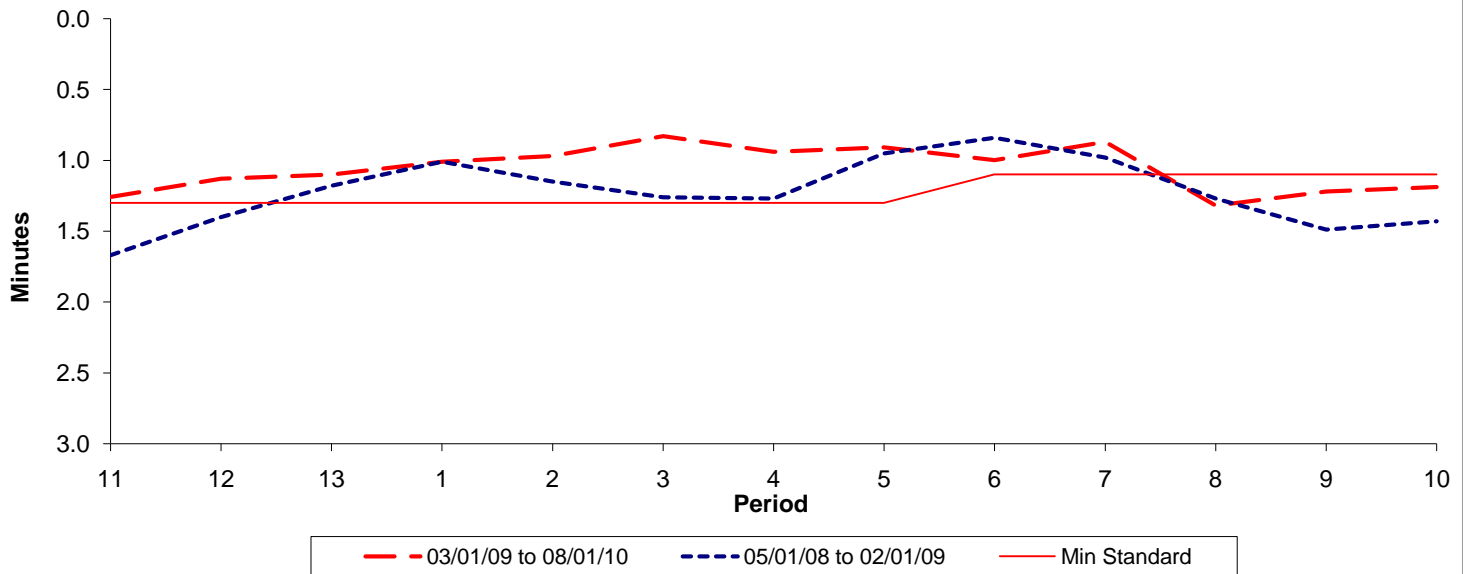




Reliability Performance (High Frequency)

Excess Waiting Time (minutes)

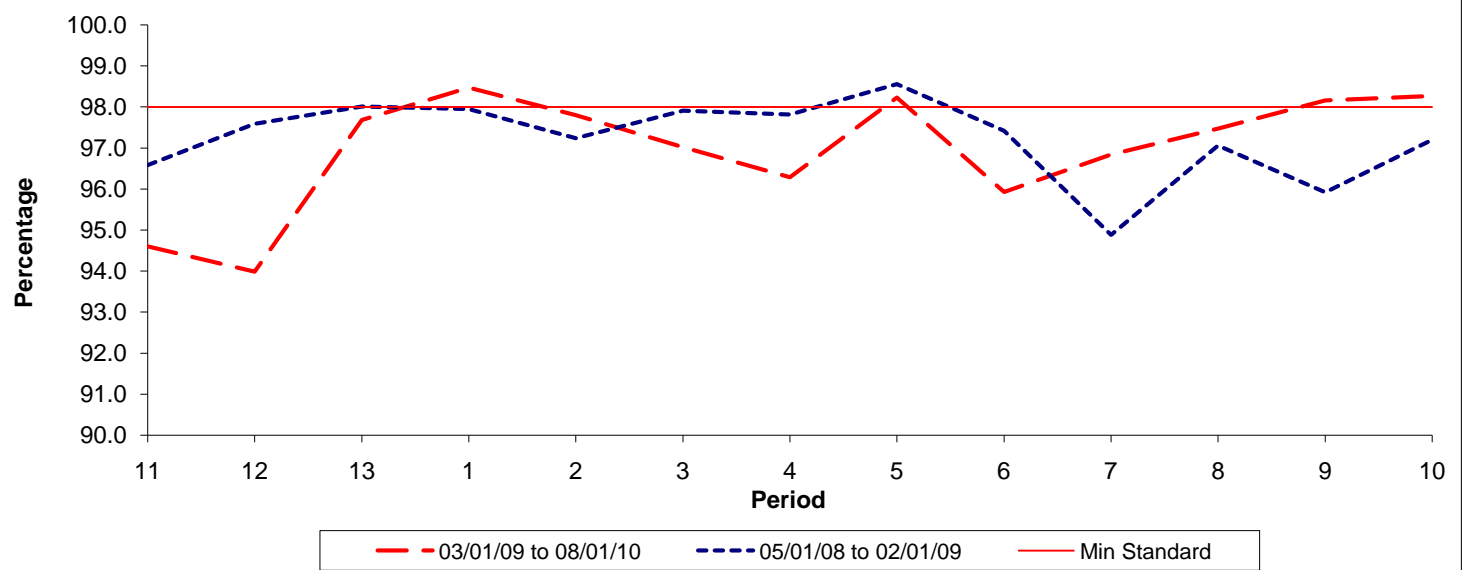


Date Range / Period	11	12	13	1	2	3	4	5	6	7	8	9	10
03/01/09 to 08/01/10	1.26	1.13	1.10	1.01	0.97	0.83	0.94	0.91	1.00	0.87	1.32	1.22	1.19
05/01/08 to 02/01/09	1.67	1.40	1.18	1.01	1.15	1.26	1.27	0.95	0.84	0.98	1.27	1.49	1.43
Min Standard	1.30	1.30	1.30	1.30	1.30	1.30	1.30	1.30	1.10	1.10	1.10	1.10	1.10

Excess Waiting Time figures are based on 12 weeks data

Kilometre Performance

% Kilometres Operated



Date Range / Period	11	12	13	1	2	3	4	5	6	7	8	9	10
03/01/09 to 08/01/10	94.60	93.98	97.68	98.47	97.80	97.02	96.29	98.23	95.93	96.84	97.47	98.16	98.27
05/01/08 to 02/01/09	96.58	97.59	98.01	97.95	97.24	97.91	97.82	98.56	97.42	94.88	97.06	95.92	97.20
Min Standard	98.00	98.00	98.00	98.00	98.00	98.00	98.00	98.00	98.00	98.00	98.00	98.00	98.00

Kilometre figures are based on 4 weeks data