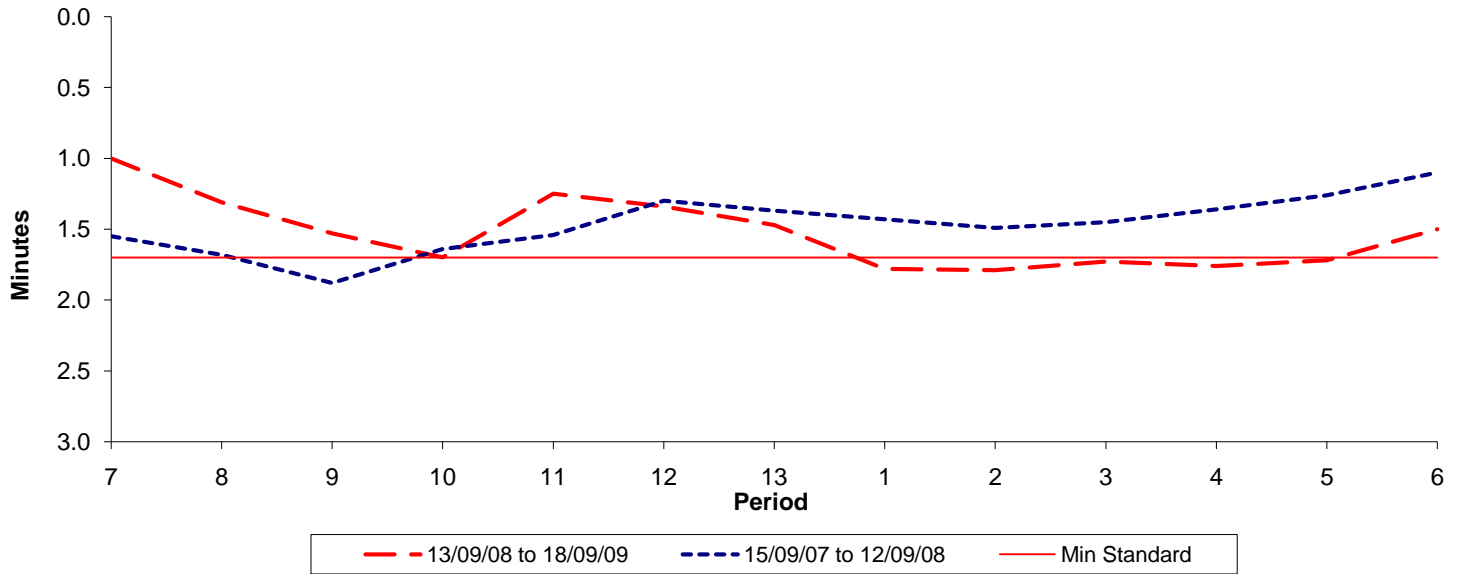




Reliability Performance (High Frequency)

Excess Waiting Time (minutes)

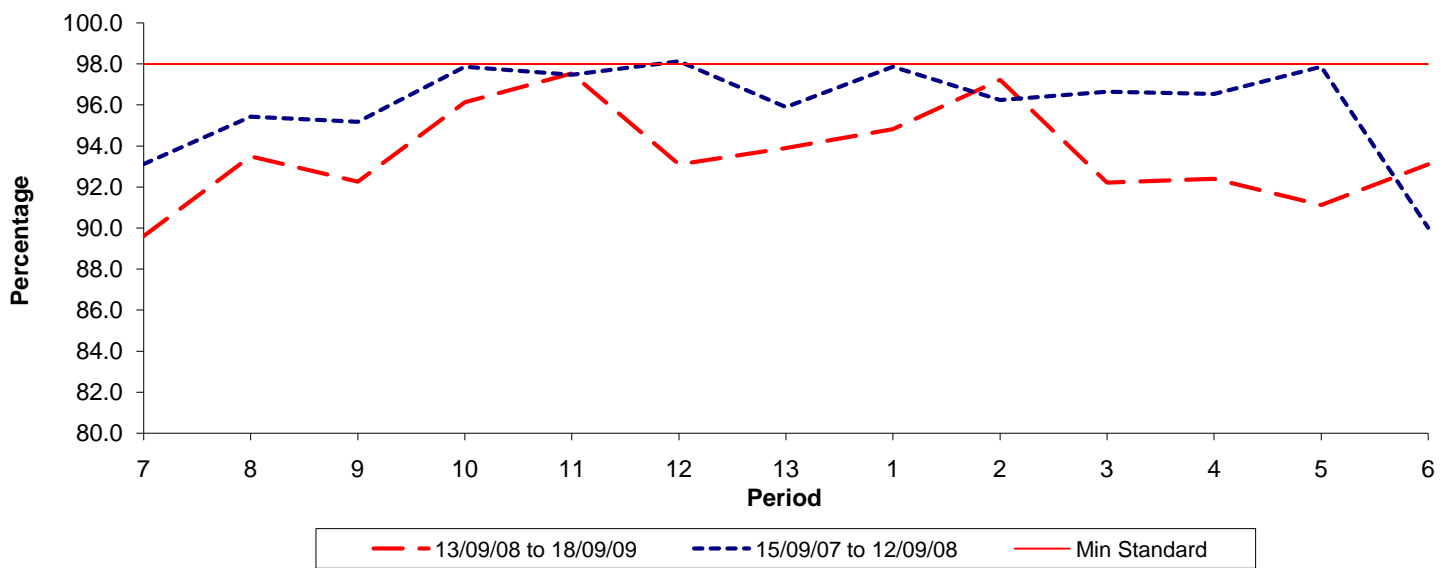


Date Range / Period	7	8	9	10	11	12	13	1	2	3	4	5	6
13/09/08 to 18/09/09	1.00	1.31	1.53	1.70	1.25	1.34	1.47	1.78	1.79	1.73	1.76	1.72	1.50
15/09/07 to 12/09/08	1.55	1.68	1.88	1.64	1.54	1.30	1.37	1.43	1.49	1.45	1.36	1.26	1.10
Min Standard	1.70	1.70	1.70	1.70	1.70	1.70	1.70	1.70	1.70	1.70	1.70	1.70	1.70

Excess Waiting Time figures are based on 12 weeks data

Kilometre Performance

% Kilometres Operated



Date Range / Period	7	8	9	10	11	12	13	1	2	3	4	5	6
13/09/08 to 18/09/09	89.60	93.49	92.25	96.13	97.53	93.09	93.90	94.81	97.22	92.20	92.40	91.12	93.09
15/09/07 to 12/09/08	93.11	95.43	95.18	97.87	97.47	98.13	95.89	97.87	96.24	96.64	96.54	97.86	90.01
Min Standard	98.00	98.00	98.00	98.00	98.00	98.00	98.00	98.00	98.00	98.00	98.00	98.00	98.00

Kilometre figures are based on 4 weeks data