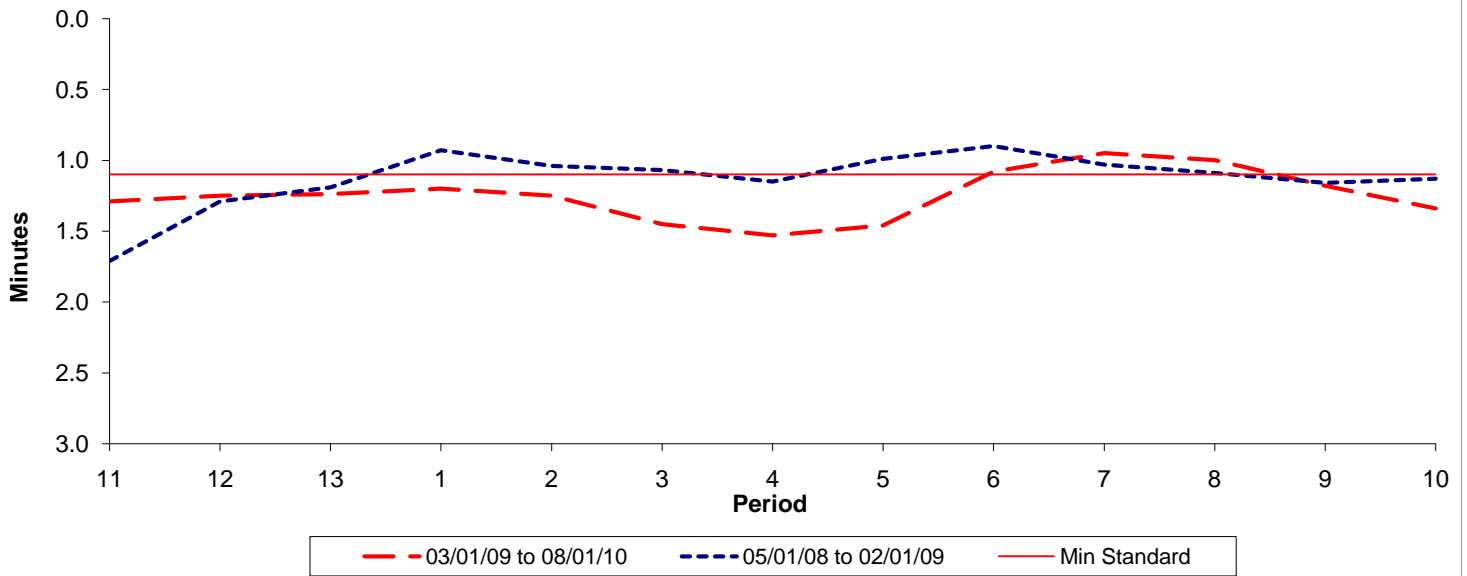




**Reliability Performance ( High Frequency )**

**Excess Waiting Time (minutes)**

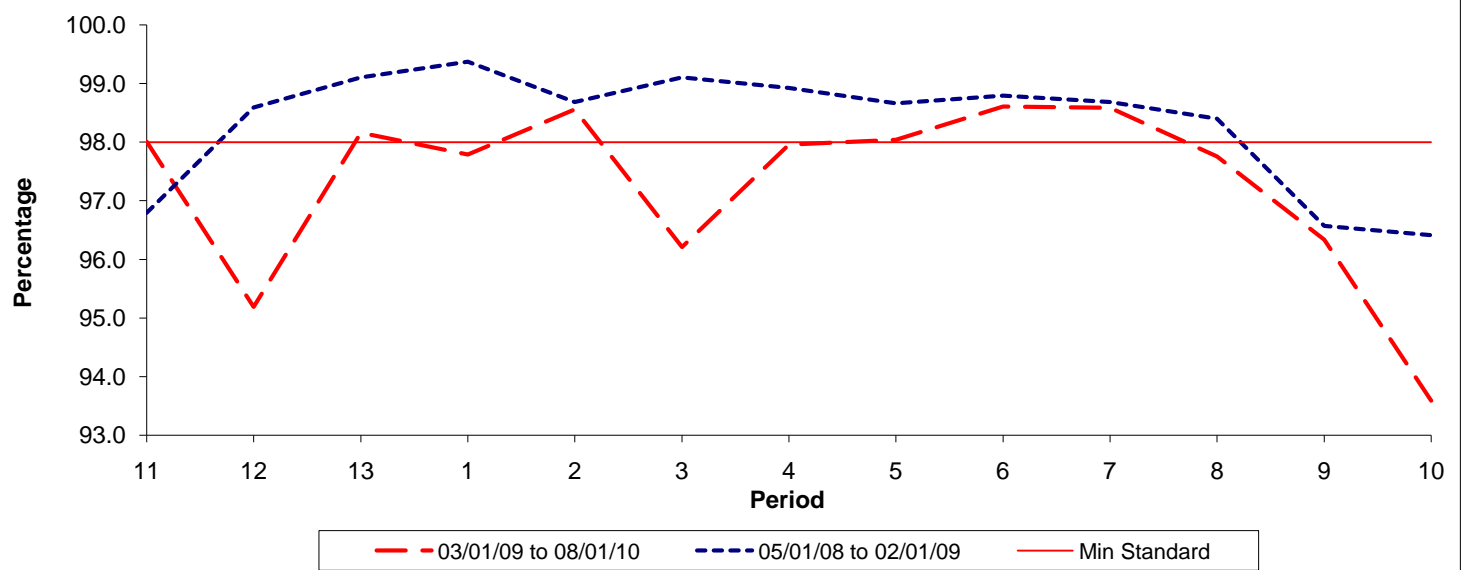


Date Range / Period	11	12	13	1	2	3	4	5	6	7	8	9	10
03/01/09 to 08/01/10	1.29	1.25	1.24	1.20	1.25	1.45	1.53	1.46	1.08	0.95	1.00	1.18	1.34
05/01/08 to 02/01/09	1.71	1.29	1.19	0.93	1.04	1.07	1.15	0.99	0.90	1.03	1.09	1.16	1.13
Min Standard	1.10	1.10	1.10	1.10	1.10	1.10	1.10	1.10	1.10	1.10	1.10	1.10	1.10

Excess Waiting Time figures are based on 12 weeks data

**Kilometre Performance**

**% Kilometres Operated**



Date Range / Period	11	12	13	1	2	3	4	5	6	7	8	9	10
03/01/09 to 08/01/10	98.01	95.19	98.16	97.79	98.56	96.21	97.96	98.04	98.61	98.59	97.76	96.34	93.59
05/01/08 to 02/01/09	96.79	98.59	99.10	99.37	98.68	99.10	98.92	98.66	98.79	98.68	98.40	96.57	96.41
Min Standard	98.00	98.00	98.00	98.00	98.00	98.00	98.00	98.00	98.00	98.00	98.00	98.00	98.00

Kilometre figures are based on 4 weeks data