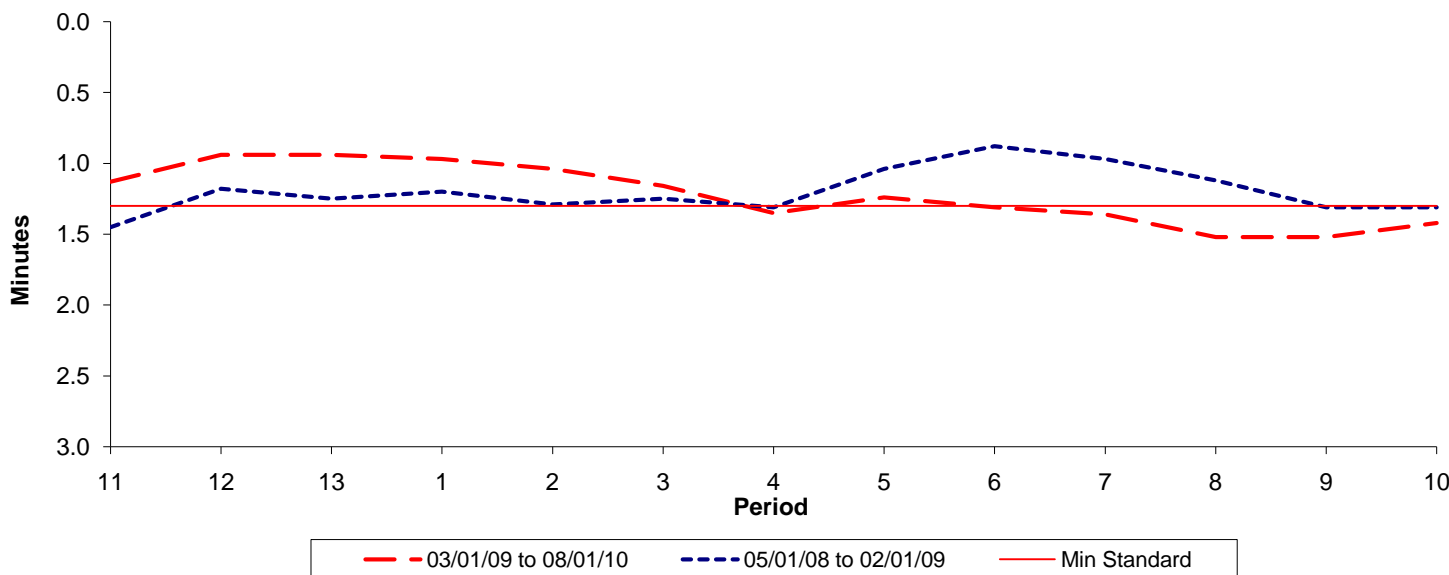




Reliability Performance (High Frequency)

Excess Waiting Time (minutes)

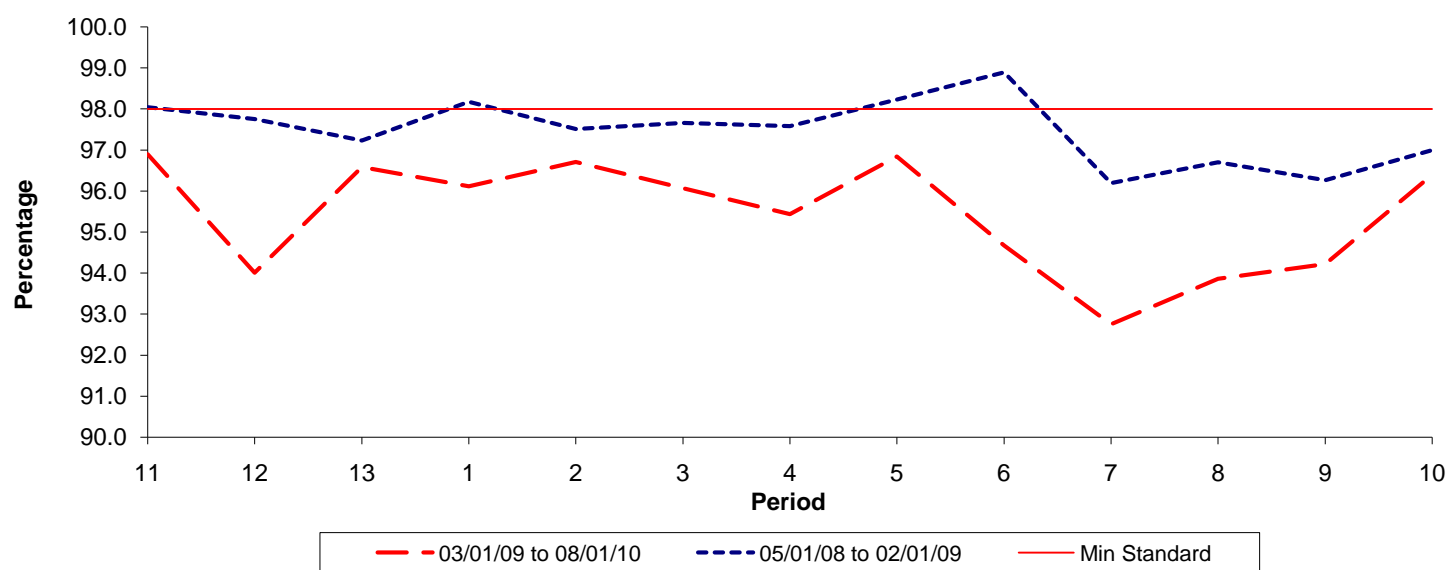


Date Range / Period	11	12	13	1	2	3	4	5	6	7	8	9	10
03/01/09 to 08/01/10	1.13	0.94	0.94	0.97	1.04	1.16	1.35	1.24	1.31	1.36	1.52	1.52	1.42
05/01/08 to 02/01/09	1.45	1.18	1.25	1.20	1.29	1.25	1.31	1.04	0.88	0.97	1.12	1.31	1.31
Min Standard	1.30	1.30	1.30	1.30	1.30	1.30	1.30	1.30	1.30	1.30	1.30	1.30	1.30

Excess Waiting Time figures are based on 12 weeks data

Kilometre Performance

% Kilometres Operated



Date Range / Period	11	12	13	1	2	3	4	5	6	7	8	9	10
03/01/09 to 08/01/10	96.90	94.01	96.59	96.12	96.71	96.07	95.44	96.85	94.67	92.75	93.86	94.22	96.39
05/01/08 to 02/01/09	98.04	97.75	97.23	98.17	97.51	97.66	97.58	98.23	98.89	96.19	96.70	96.26	96.99
Min Standard	98.00	98.00	98.00	98.00	98.00	98.00	98.00	98.00	98.00	98.00	98.00	98.00	98.00

Kilometre figures are based on 4 weeks data