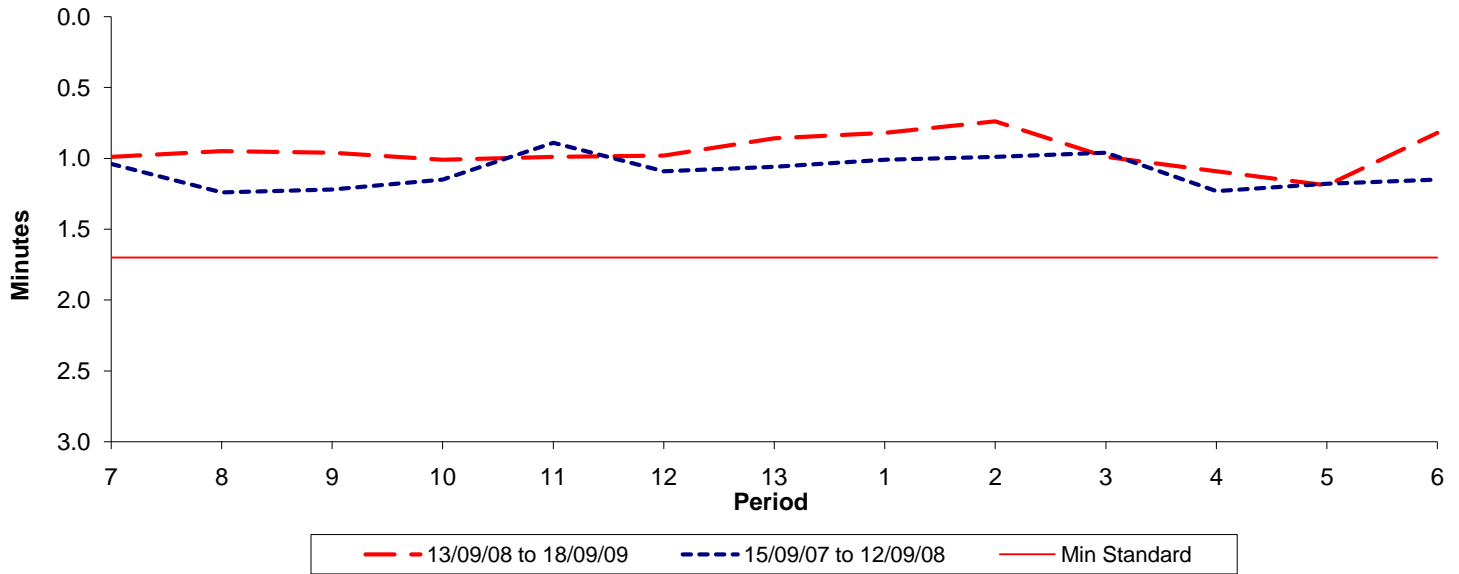




Reliability Performance (High Frequency)

Excess Waiting Time (minutes)

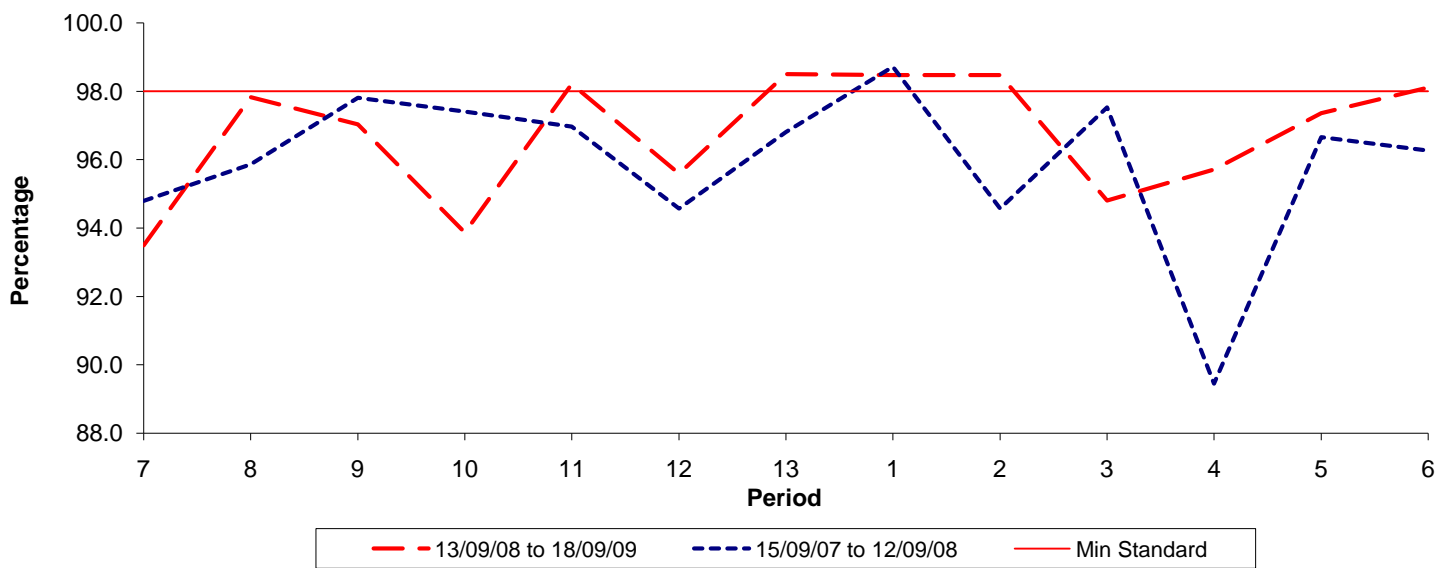


Date Range / Period	7	8	9	10	11	12	13	1	2	3	4	5	6
13/09/08 to 18/09/09	0.99	0.95	0.96	1.01	0.99	0.98	0.86	0.82	0.74	0.99	1.09	1.19	0.82
15/09/07 to 12/09/08	1.04	1.24	1.22	1.15	0.89	1.09	1.06	1.01	0.99	0.96	1.23	1.18	1.15
Min Standard	1.70	1.70	1.70	1.70	1.70	1.70	1.70	1.70	1.70	1.70	1.70	1.70	1.70

Excess Waiting Time figures are based on 12 weeks data

Kilometre Performance

% Kilometres Operated



Date Range / Period	7	8	9	10	11	12	13	1	2	3	4	5	6
13/09/08 to 18/09/09	93.49	97.83	97.03	93.86	98.21	95.59	98.50	98.47	98.47	94.80	95.71	97.36	98.11
15/09/07 to 12/09/08	94.80	95.86	97.81	97.41	96.97	94.57	96.81	98.72	94.57	97.53	89.45	96.66	96.27
Min Standard	98.00	98.00	98.00	98.00	98.00	98.00	98.00	98.00	98.00	98.00	98.00	98.00	98.00

Kilometre figures are based on 4 weeks data