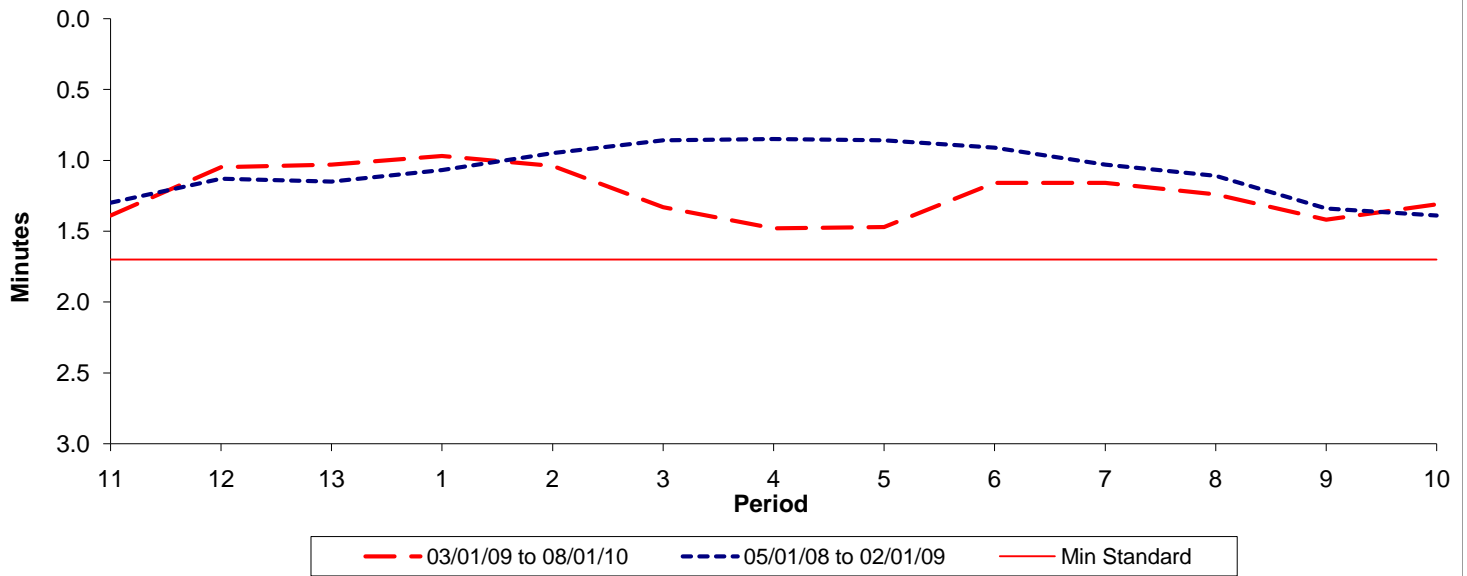




**Reliability Performance ( High Frequency )**

**Excess Waiting Time (minutes)**

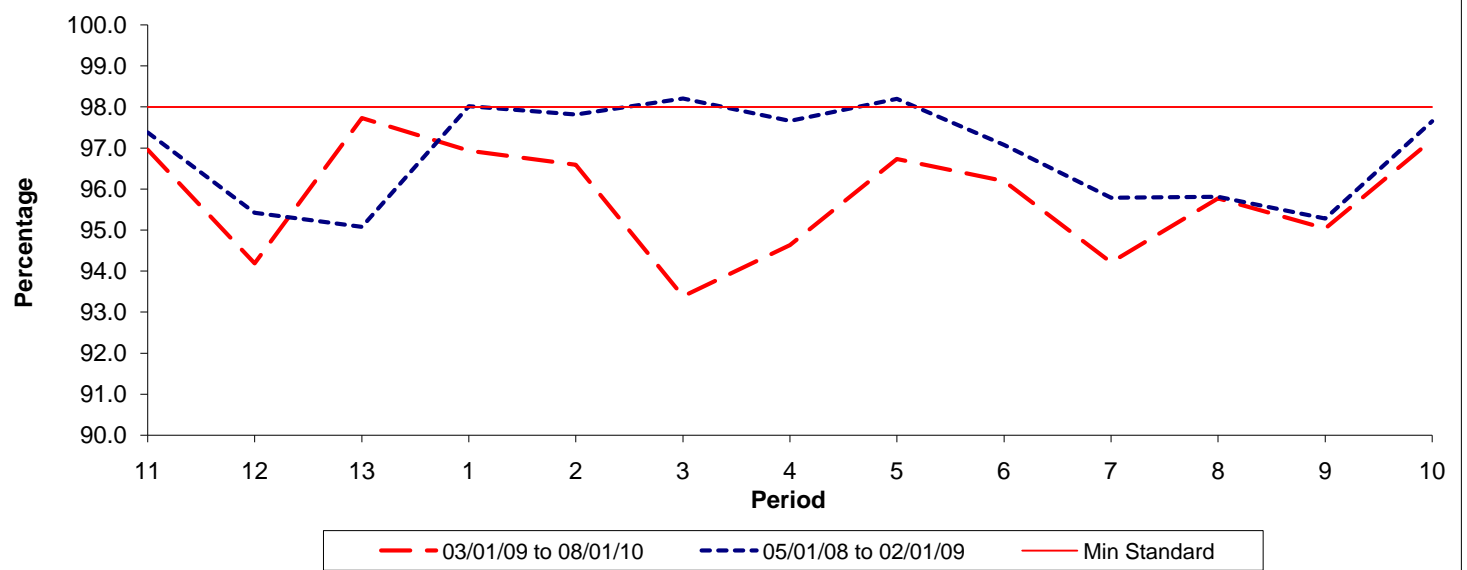


Date Range / Period	11	12	13	1	2	3	4	5	6	7	8	9	10
03/01/09 to 08/01/10	1.39	1.05	1.03	0.97	1.04	1.33	1.48	1.47	1.16	1.16	1.24	1.42	1.31
05/01/08 to 02/01/09	1.30	1.13	1.15	1.07	0.95	0.86	0.85	0.86	0.91	1.03	1.11	1.34	1.39
Min Standard	1.70	1.70	1.70	1.70	1.70	1.70	1.70	1.70	1.70	1.70	1.70	1.70	1.70

Excess Waiting Time figures are based on 12 weeks data

**Kilometre Performance**

**% Kilometres Operated**



Date Range / Period	11	12	13	1	2	3	4	5	6	7	8	9	10
03/01/09 to 08/01/10	96.96	94.19	97.73	96.94	96.60	93.39	94.64	96.74	96.19	94.21	95.78	95.04	97.20
05/01/08 to 02/01/09	97.38	95.42	95.08	98.02	97.82	98.21	97.66	98.20	97.08	95.79	95.81	95.28	97.65
Min Standard	98.00	98.00	98.00	98.00	98.00	98.00	98.00	98.00	98.00	98.00	98.00	98.00	98.00

Kilometre figures are based on 4 weeks data