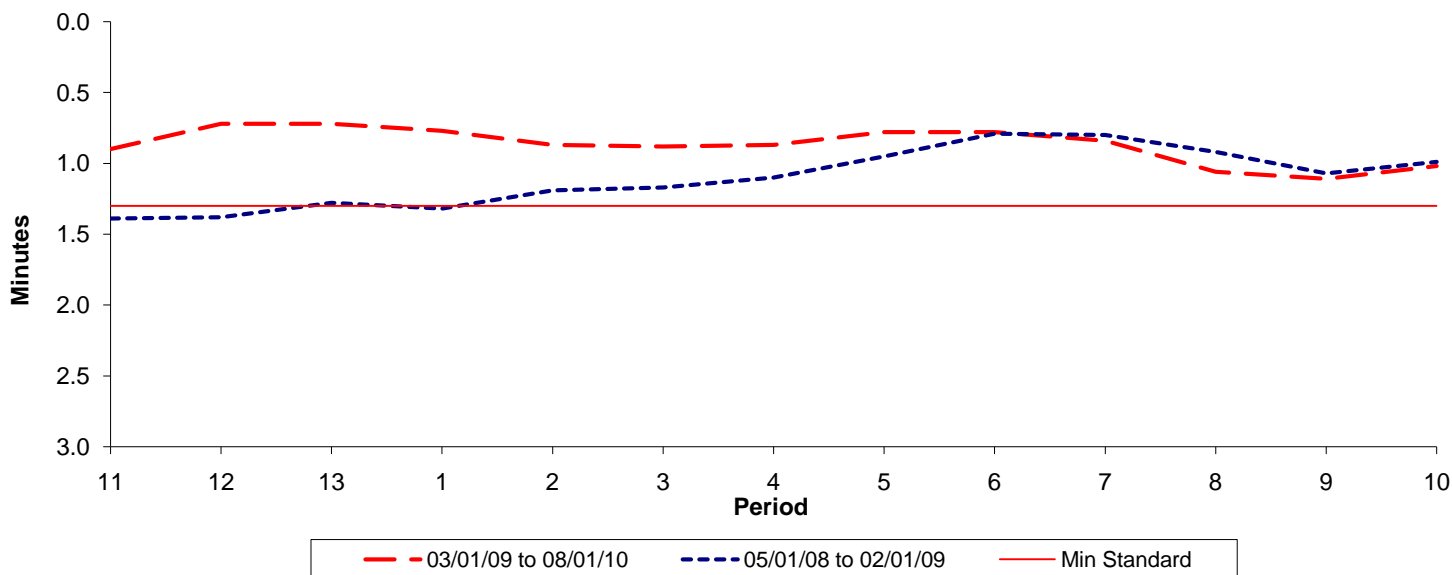




Reliability Performance (High Frequency)

Excess Waiting Time (minutes)

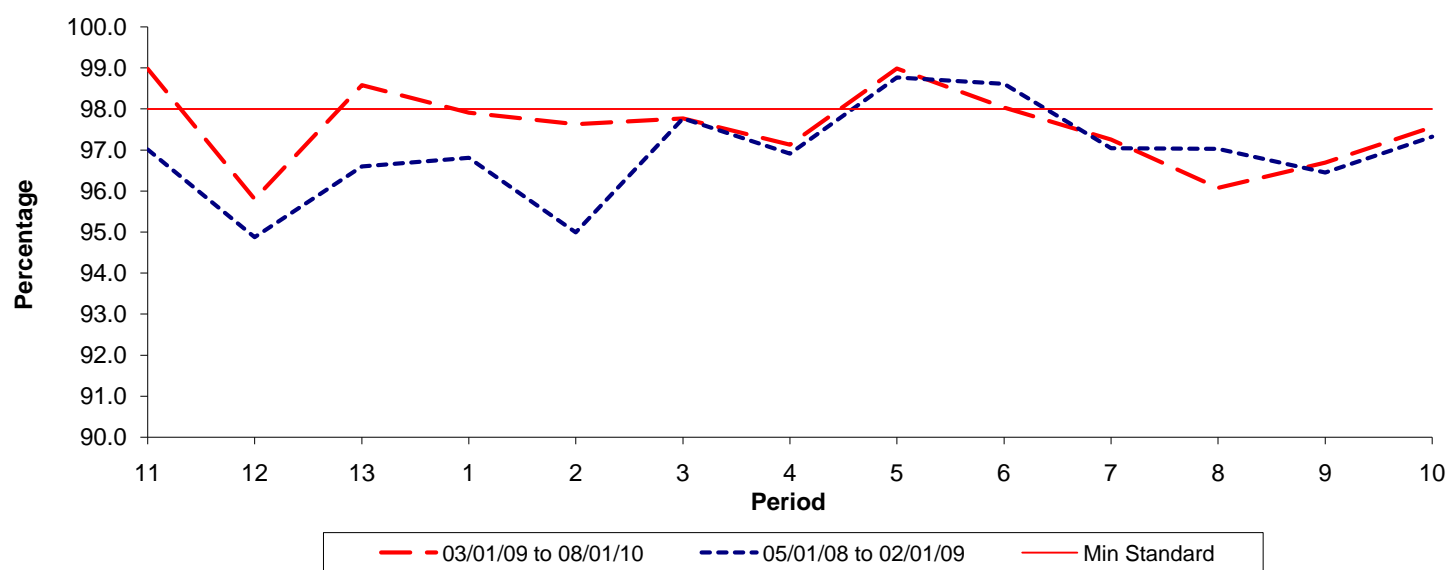


Date Range / Period	11	12	13	1	2	3	4	5	6	7	8	9	10
03/01/09 to 08/01/10	0.90	0.72	0.72	0.77	0.87	0.88	0.87	0.78	0.78	0.84	1.06	1.11	1.02
05/01/08 to 02/01/09	1.39	1.38	1.28	1.32	1.19	1.17	1.10	0.95	0.79	0.80	0.92	1.07	0.99
Min Standard	1.30	1.30	1.30	1.30	1.30	1.30	1.30	1.30	1.30	1.30	1.30	1.30	1.30

Excess Waiting Time figures are based on 12 weeks data

Kilometre Performance

% Kilometres Operated



Date Range / Period	11	12	13	1	2	3	4	5	6	7	8	9	10
03/01/09 to 08/01/10	98.98	95.80	98.58	97.91	97.63	97.77	97.13	98.98	98.04	97.25	96.07	96.69	97.56
05/01/08 to 02/01/09	97.01	94.87	96.60	96.81	94.99	97.77	96.91	98.77	98.61	97.04	97.03	96.45	97.32
Min Standard	98.00	98.00	98.00	98.00	98.00	98.00	98.00	98.00	98.00	98.00	98.00	98.00	98.00

Kilometre figures are based on 4 weeks data