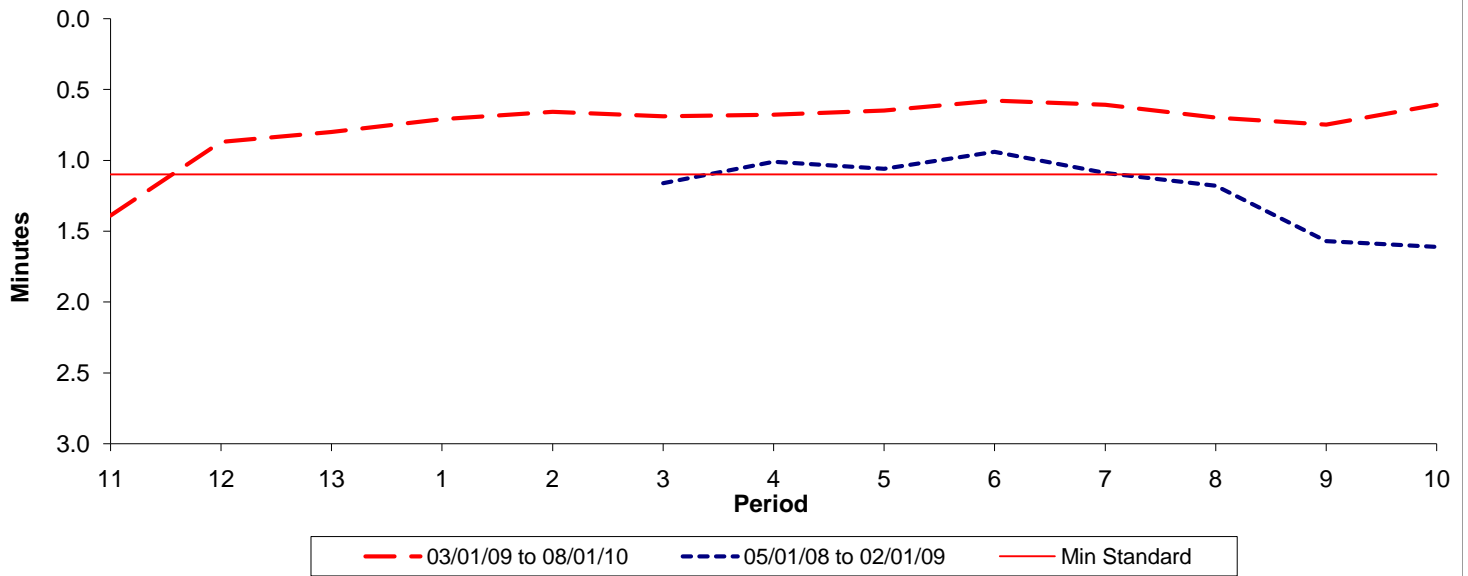




Reliability Performance (High Frequency)

Excess Waiting Time (minutes)

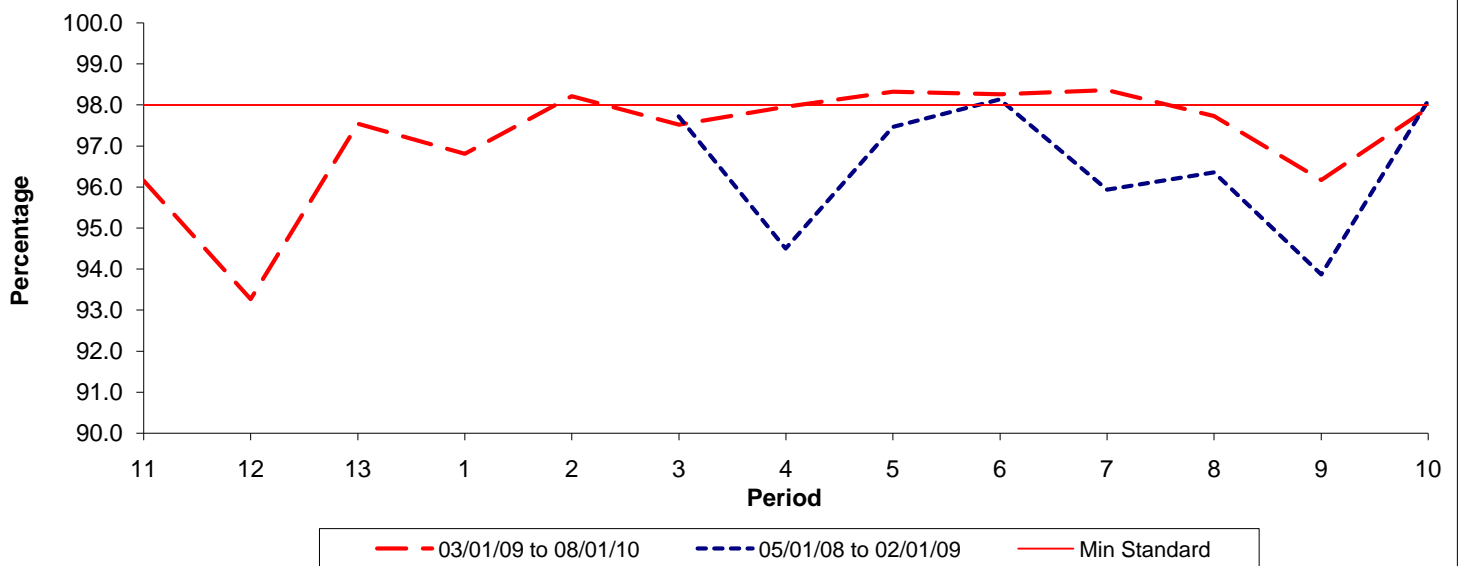


Date Range / Period	11	12	13	1	2	3	4	5	6	7	8	9	10
03/01/09 to 08/01/10	1.39	0.87	0.80	0.71	0.66	0.69	0.68	0.65	0.58	0.61	0.70	0.75	0.61
05/01/08 to 02/01/09						1.16	1.01	1.06	0.94	1.09	1.18	1.57	1.61
Min Standard	1.10	1.10	1.10	1.10	1.10	1.10	1.10	1.10	1.10	1.10	1.10	1.10	1.10

Excess Waiting Time figures are based on 12 weeks data

Kilometre Performance

% Kilometres Operated



Date Range / Period	11	12	13	1	2	3	4	5	6	7	8	9	10
03/01/09 to 08/01/10	96.16	93.26	97.54	96.81	98.22	97.52	97.96	98.33	98.26	98.37	97.73	96.17	97.93
05/01/08 to 02/01/09						97.73	94.50	97.47	98.14	95.94	96.36	93.87	98.11
Min Standard	98.00	98.00	98.00	98.00	98.00	98.00	98.00	98.00	98.00	98.00	98.00	98.00	98.00

Kilometre figures are based on 4 weeks data