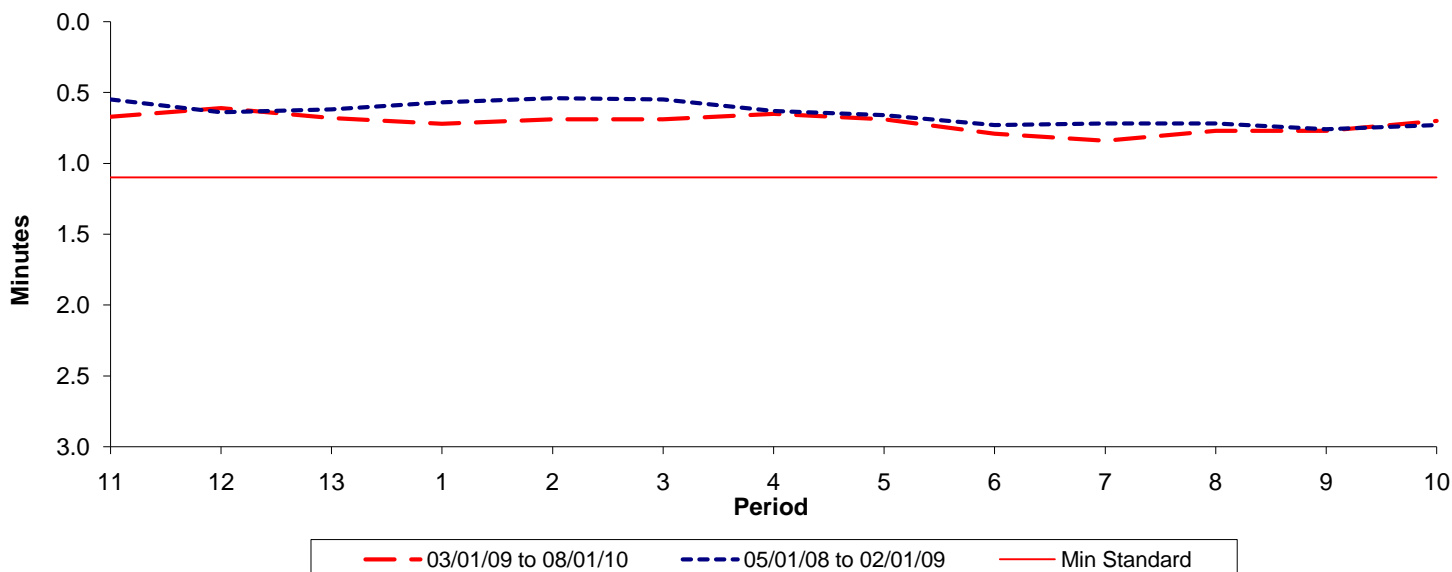




Reliability Performance (High Frequency)

Excess Waiting Time (minutes)

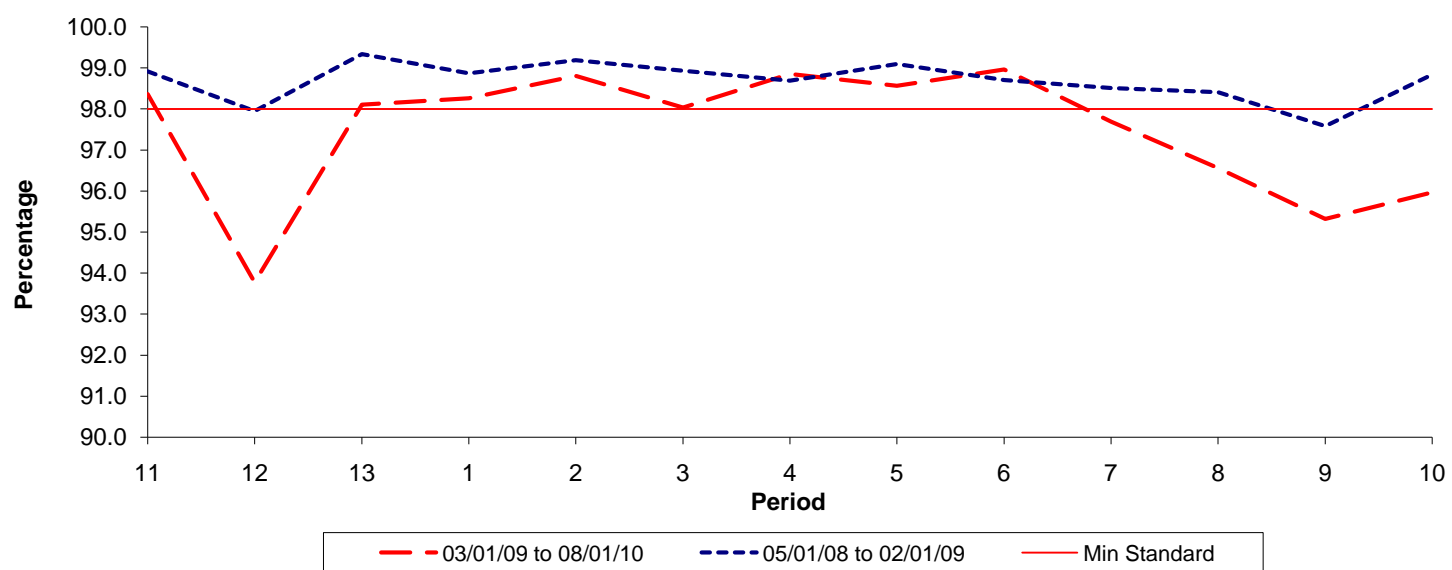


Date Range / Period	11	12	13	1	2	3	4	5	6	7	8	9	10
03/01/09 to 08/01/10	0.67	0.61	0.68	0.72	0.69	0.69	0.65	0.69	0.79	0.84	0.77	0.77	0.70
05/01/08 to 02/01/09	0.55	0.64	0.62	0.57	0.54	0.55	0.63	0.66	0.73	0.72	0.72	0.76	0.73
Min Standard	1.10	1.10	1.10	1.10	1.10	1.10	1.10	1.10	1.10	1.10	1.10	1.10	1.10

Excess Waiting Time figures are based on 12 weeks data

Kilometre Performance

% Kilometres Operated



Date Range / Period	11	12	13	1	2	3	4	5	6	7	8	9	10
03/01/09 to 08/01/10	98.36	93.77	98.10	98.26	98.81	98.03	98.85	98.57	98.96	97.69	96.56	95.32	95.97
05/01/08 to 02/01/09	98.92	97.95	99.34	98.87	99.19	98.93	98.69	99.10	98.71	98.51	98.41	97.58	98.84
Min Standard	98.00	98.00	98.00	98.00	98.00	98.00	98.00	98.00	98.00	98.00	98.00	98.00	98.00

Kilometre figures are based on 4 weeks data