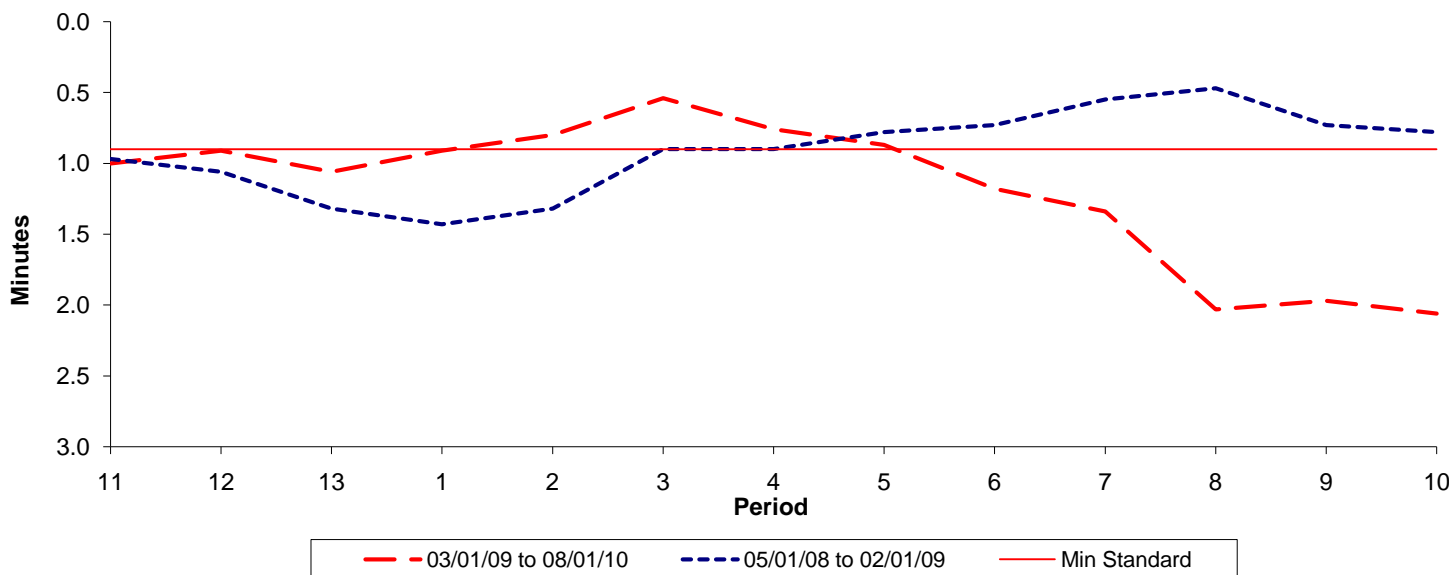




Reliability Performance (High Frequency)

Excess Waiting Time (minutes)

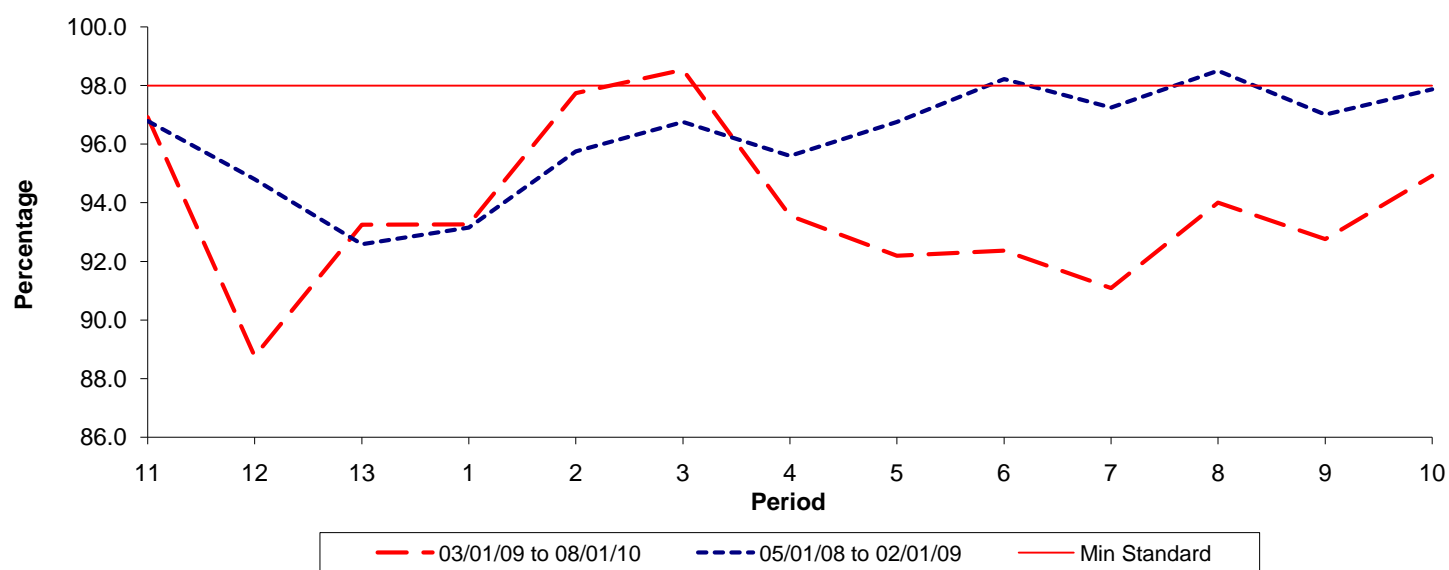


Date Range / Period	11	12	13	1	2	3	4	5	6	7	8	9	10
03/01/09 to 08/01/10	1.00	0.91	1.06	0.91	0.80	0.54	0.76	0.87	1.18	1.34	2.03	1.97	2.06
05/01/08 to 02/01/09	0.97	1.06	1.32	1.43	1.32	0.90	0.90	0.78	0.73	0.55	0.47	0.73	0.78
Min Standard	0.90	0.90	0.90	0.90	0.90	0.90	0.90	0.90	0.90	0.90	0.90	0.90	0.90

Excess Waiting Time figures are based on 12 weeks data

Kilometre Performance

% Kilometres Operated



Date Range / Period	11	12	13	1	2	3	4	5	6	7	8	9	10
03/01/09 to 08/01/10	96.92	88.76	93.25	93.26	97.74	98.54	93.56	92.19	92.37	91.09	94.01	92.76	94.92
05/01/08 to 02/01/09	96.78	94.80	92.58	93.15	95.75	96.75	95.60	96.75	98.22	97.24	98.50	97.00	97.87
Min Standard	98.00	98.00	98.00	98.00	98.00	98.00	98.00	98.00	98.00	98.00	98.00	98.00	98.00

Kilometre figures are based on 4 weeks data