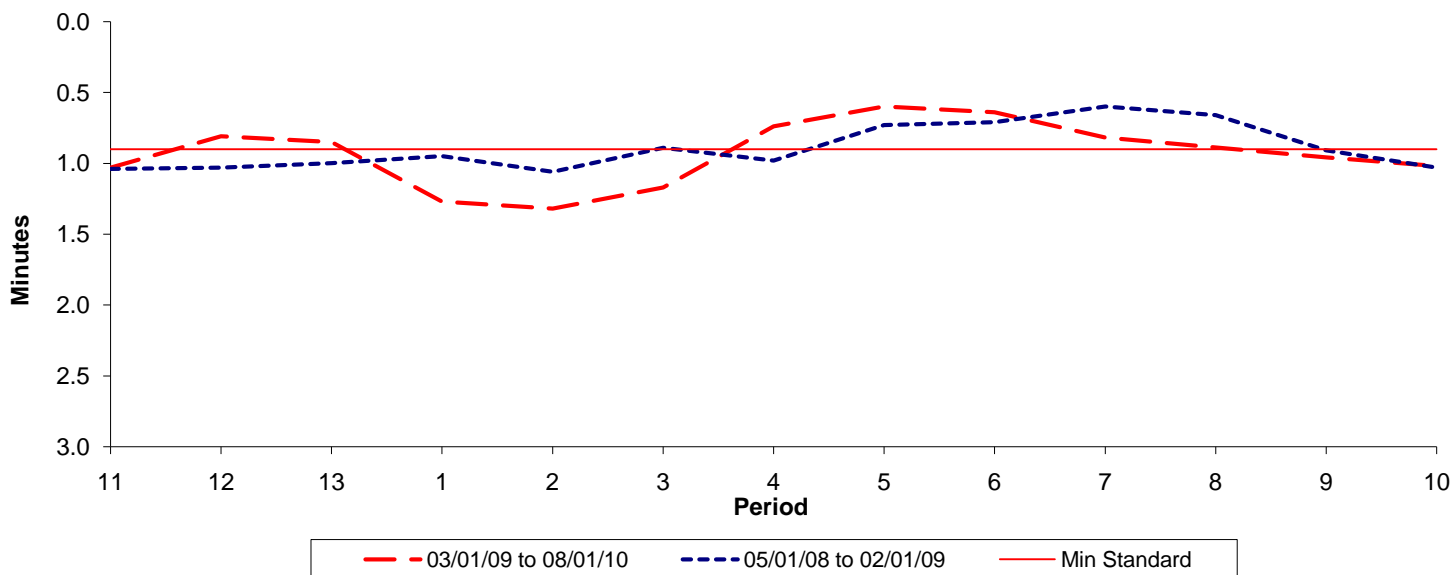




Reliability Performance (High Frequency)

Excess Waiting Time (minutes)

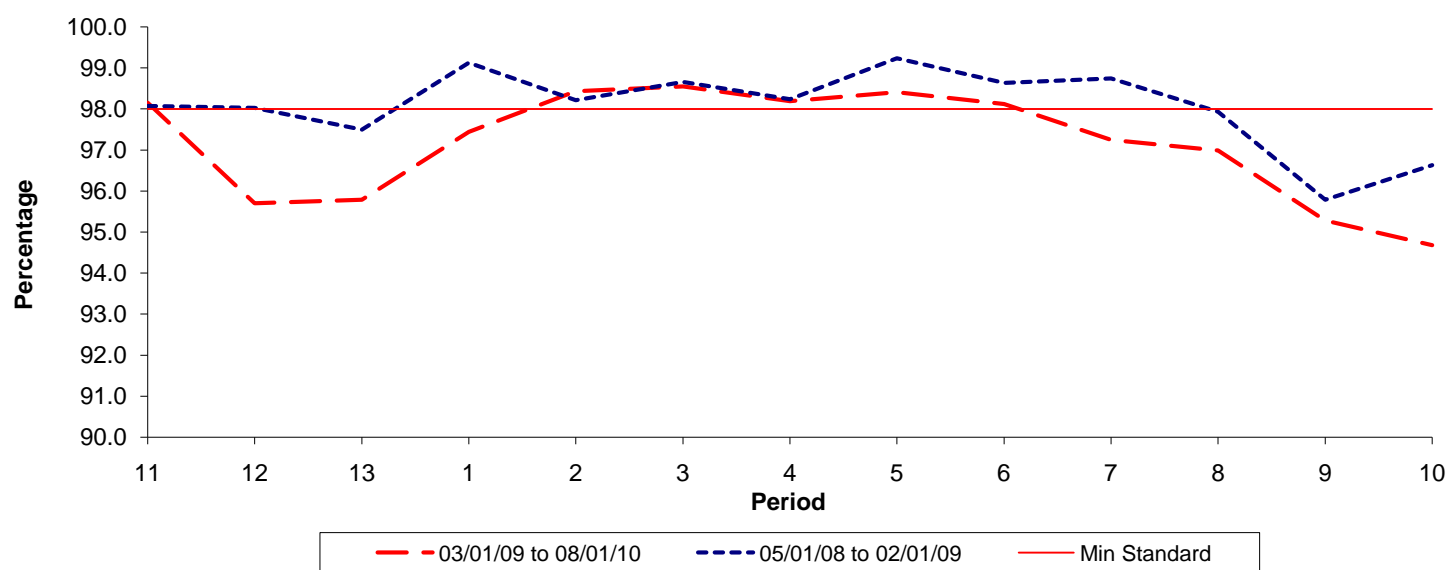


Date Range / Period	11	12	13	1	2	3	4	5	6	7	8	9	10
03/01/09 to 08/01/10	1.03	0.81	0.85	1.27	1.32	1.17	0.74	0.60	0.64	0.82	0.89	0.96	1.02
05/01/08 to 02/01/09	1.04	1.03	1.00	0.95	1.06	0.89	0.98	0.73	0.71	0.60	0.66	0.91	1.03
Min Standard	0.90	0.90	0.90	0.90	0.90	0.90	0.90	0.90	0.90	0.90	0.90	0.90	0.90

Excess Waiting Time figures are based on 12 weeks data

Kilometre Performance

% Kilometres Operated



Date Range / Period	11	12	13	1	2	3	4	5	6	7	8	9	10
03/01/09 to 08/01/10	98.15	95.70	95.78	97.44	98.43	98.55	98.19	98.41	98.12	97.25	96.99	95.28	94.68
05/01/08 to 02/01/09	98.08	98.03	97.50	99.13	98.22	98.66	98.24	99.24	98.64	98.75	97.94	95.79	96.63
Min Standard	98.00	98.00	98.00	98.00	98.00	98.00	98.00	98.00	98.00	98.00	98.00	98.00	98.00

Kilometre figures are based on 4 weeks data