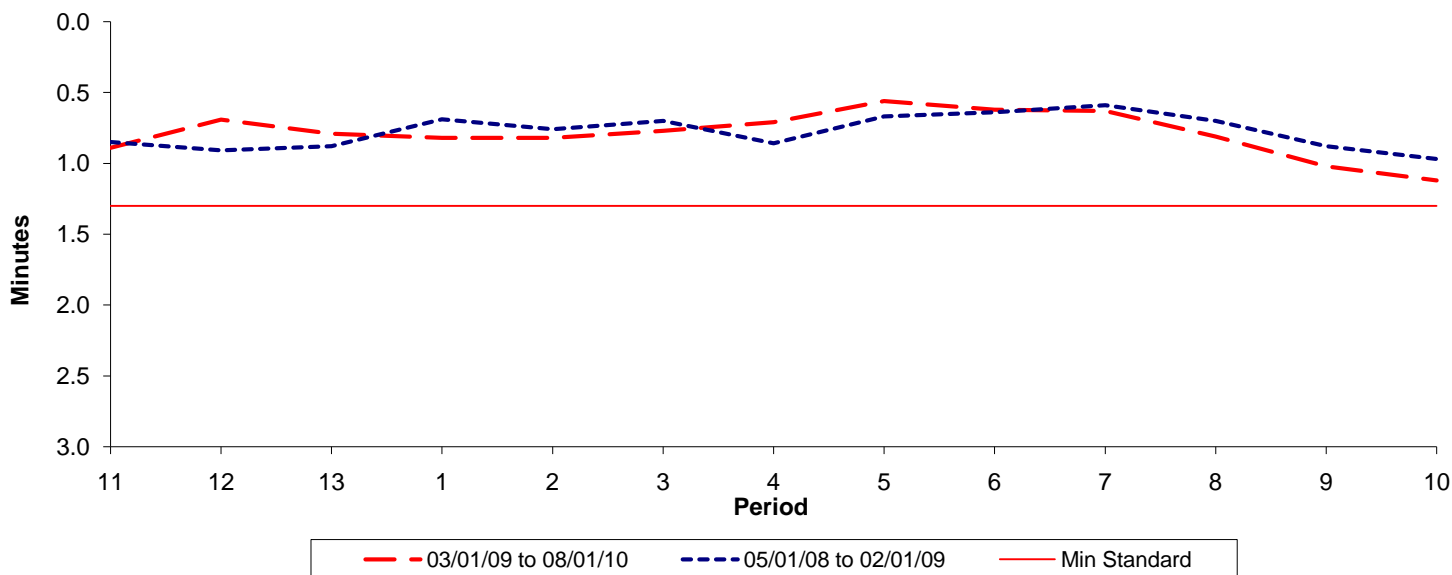




Reliability Performance (High Frequency)

Excess Waiting Time (minutes)

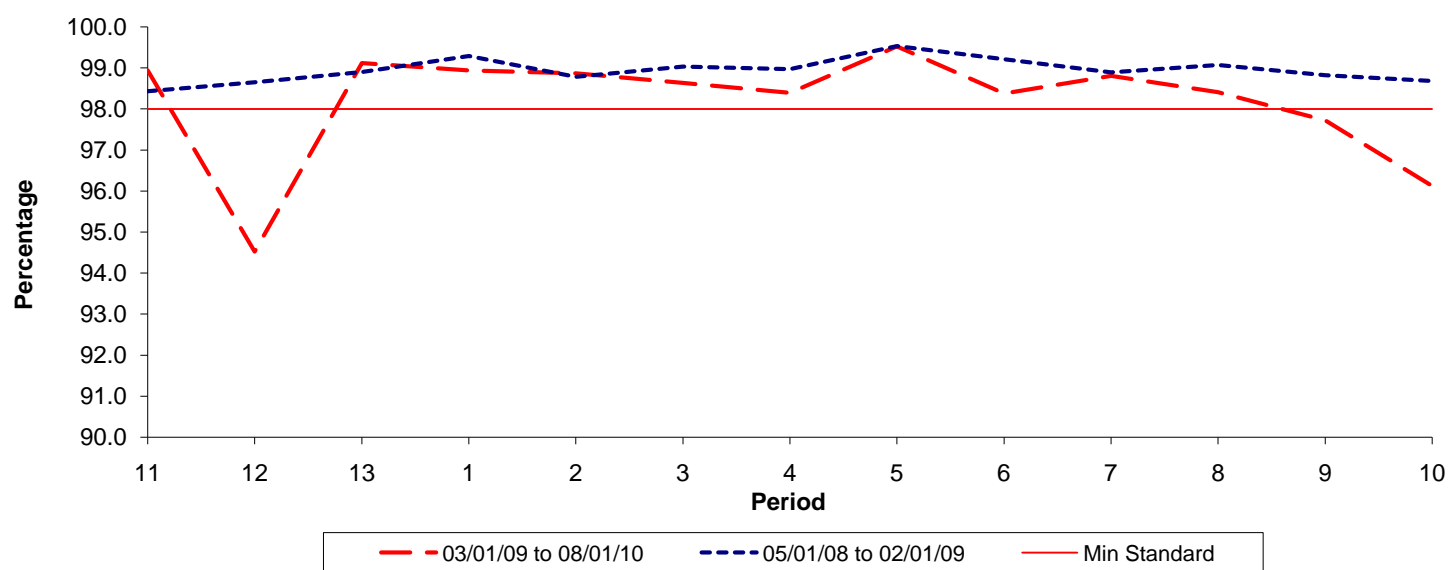


Date Range / Period	11	12	13	1	2	3	4	5	6	7	8	9	10
03/01/09 to 08/01/10	0.89	0.69	0.79	0.82	0.82	0.77	0.71	0.56	0.62	0.63	0.81	1.02	1.12
05/01/08 to 02/01/09	0.85	0.91	0.88	0.69	0.76	0.70	0.86	0.67	0.64	0.59	0.70	0.88	0.97
Min Standard	1.30	1.30	1.30	1.30	1.30	1.30	1.30	1.30	1.30	1.30	1.30	1.30	1.30

Excess Waiting Time figures are based on 12 weeks data

Kilometre Performance

% Kilometres Operated



Date Range / Period	11	12	13	1	2	3	4	5	6	7	8	9	10
03/01/09 to 08/01/10	98.94	94.52	99.12	98.94	98.87	98.64	98.40	99.53	98.38	98.81	98.41	97.72	96.12
05/01/08 to 02/01/09	98.43	98.65	98.90	99.29	98.78	99.03	98.97	99.53	99.21	98.89	99.07	98.82	98.68
Min Standard	98.00	98.00	98.00	98.00	98.00	98.00	98.00	98.00	98.00	98.00	98.00	98.00	98.00

Kilometre figures are based on 4 weeks data