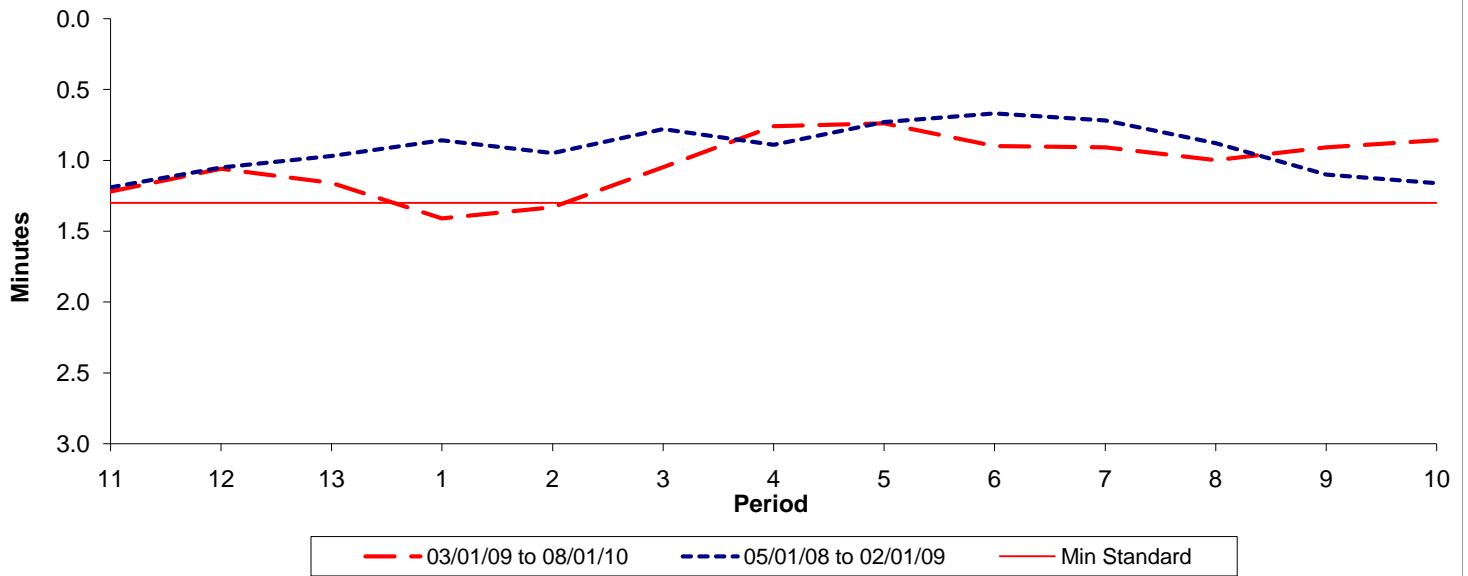




**Reliability Performance ( High Frequency )**

**Excess Waiting Time (minutes)**

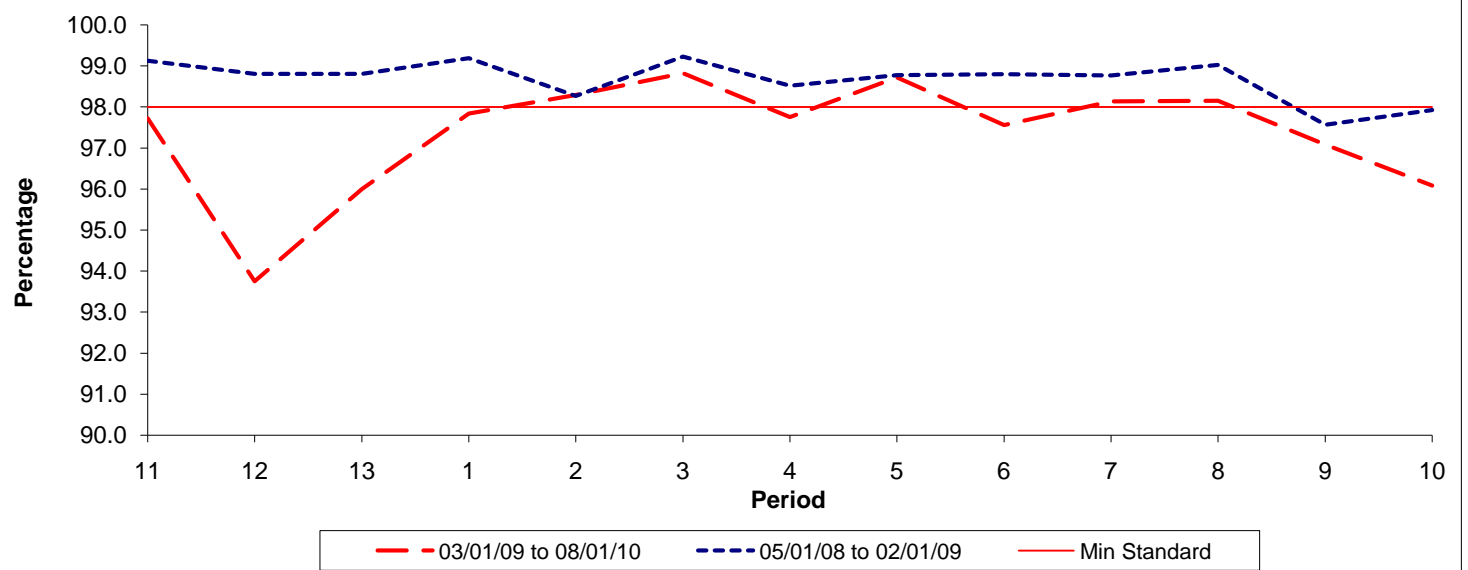


Date Range / Period	11	12	13	1	2	3	4	5	6	7	8	9	10
03/01/09 to 08/01/10	1.22	1.06	1.16	1.41	1.33	1.05	0.76	0.74	0.90	0.91	1.00	0.91	0.86
05/01/08 to 02/01/09	1.19	1.05	0.97	0.86	0.95	0.78	0.89	0.73	0.67	0.72	0.88	1.10	1.16
Min Standard	1.30	1.30	1.30	1.30	1.30	1.30	1.30	1.30	1.30	1.30	1.30	1.30	1.30

Excess Waiting Time figures are based on 12 weeks data

**Kilometre Performance**

**% Kilometres Operated**



Date Range / Period	11	12	13	1	2	3	4	5	6	7	8	9	10
03/01/09 to 08/01/10	97.72	93.75	96.00	97.84	98.29	98.82	97.75	98.72	97.56	98.13	98.15	97.08	96.08
05/01/08 to 02/01/09	99.13	98.81	98.81	99.19	98.27	99.23	98.52	98.78	98.80	98.77	99.03	97.57	97.93
Min Standard	98.00	98.00	98.00	98.00	98.00	98.00	98.00	98.00	98.00	98.00	98.00	98.00	98.00

Kilometre figures are based on 4 weeks data