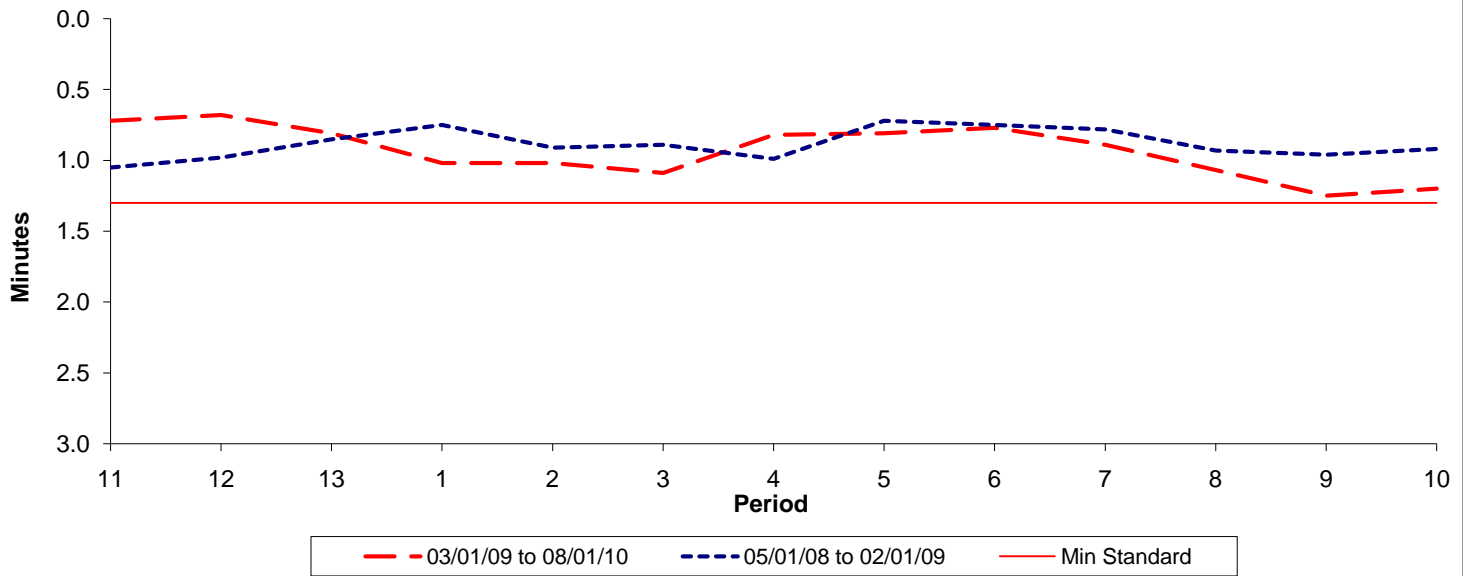




Reliability Performance (High Frequency)

Excess Waiting Time (minutes)

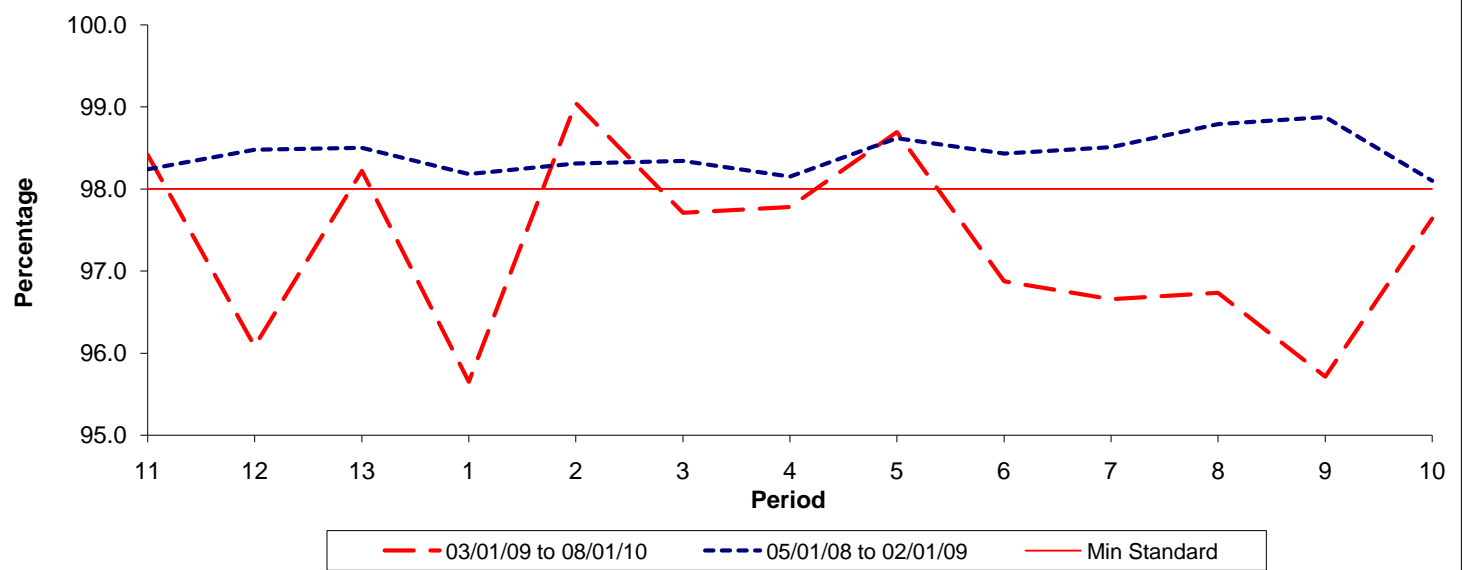


Date Range / Period	11	12	13	1	2	3	4	5	6	7	8	9	10
03/01/09 to 08/01/10	0.72	0.68	0.81	1.02	1.02	1.09	0.82	0.81	0.77	0.89	1.07	1.25	1.20
05/01/08 to 02/01/09	1.05	0.98	0.85	0.75	0.91	0.89	0.99	0.72	0.75	0.78	0.93	0.96	0.92
Min Standard	1.30	1.30	1.30	1.30	1.30	1.30	1.30	1.30	1.30	1.30	1.30	1.30	1.30

Excess Waiting Time figures are based on 12 weeks data

Kilometre Performance

% Kilometres Operated



Date Range / Period	11	12	13	1	2	3	4	5	6	7	8	9	10
03/01/09 to 08/01/10	98.42	96.08	98.22	95.65	99.05	97.71	97.78	98.69	96.88	96.66	96.74	95.72	97.64
05/01/08 to 02/01/09	98.24	98.48	98.50	98.18	98.31	98.34	98.15	98.62	98.43	98.51	98.79	98.88	98.10
Min Standard	98.00	98.00	98.00	98.00	98.00	98.00	98.00	98.00	98.00	98.00	98.00	98.00	98.00

Kilometre figures are based on 4 weeks data