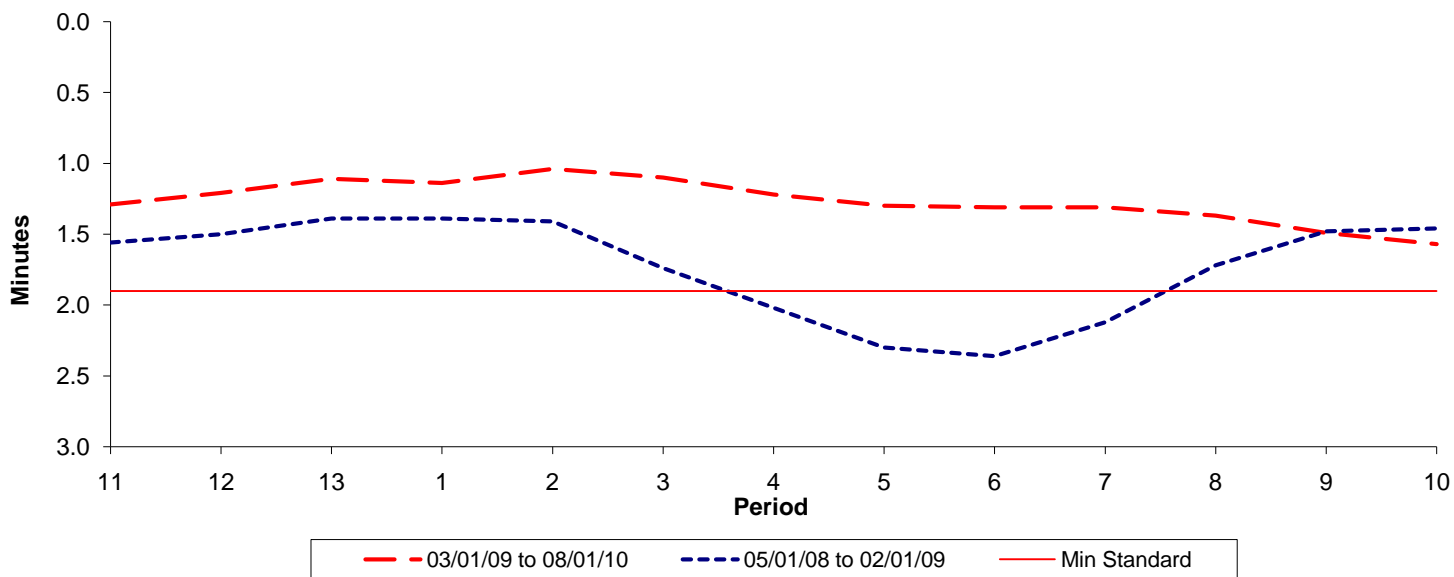




Reliability Performance (High Frequency)

Excess Waiting Time (minutes)

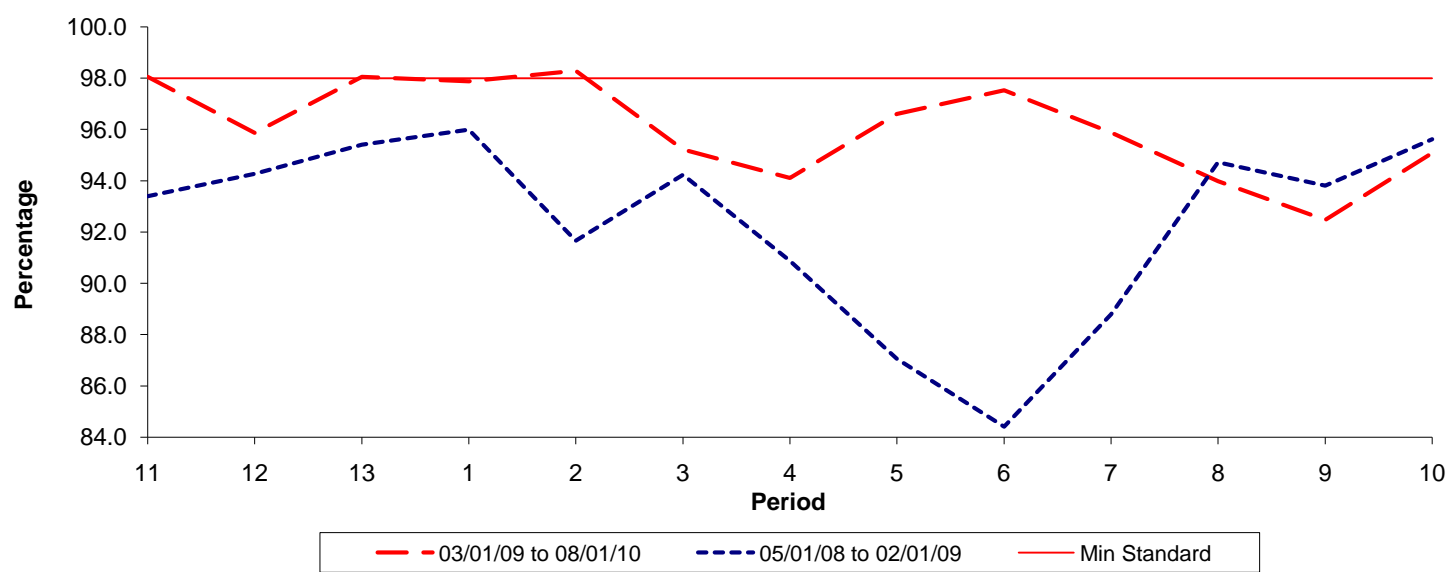


Date Range / Period	11	12	13	1	2	3	4	5	6	7	8	9	10
03/01/09 to 08/01/10	1.29	1.21	1.11	1.14	1.04	1.10	1.22	1.30	1.31	1.31	1.37	1.49	1.57
05/01/08 to 02/01/09	1.56	1.50	1.39	1.39	1.41	1.74	2.02	2.30	2.36	2.12	1.72	1.48	1.46
Min Standard	1.90	1.90	1.90	1.90	1.90	1.90	1.90	1.90	1.90	1.90	1.90	1.90	1.90

Excess Waiting Time figures are based on 12 weeks data

Kilometre Performance

% Kilometres Operated



Date Range / Period	11	12	13	1	2	3	4	5	6	7	8	9	10
03/01/09 to 08/01/10	98.05	95.87	98.05	97.88	98.29	95.22	94.11	96.60	97.53	95.88	93.98	92.47	95.08
05/01/08 to 02/01/09	93.39	94.27	95.40	95.99	91.66	94.23	90.87	87.05	84.40	88.78	94.72	93.80	95.61
Min Standard	98.00	98.00	98.00	98.00	98.00	98.00	98.00	98.00	98.00	98.00	98.00	98.00	98.00

Kilometre figures are based on 4 weeks data