

# Low Emissions Zone

## How to Identify Your Engine Make and Model

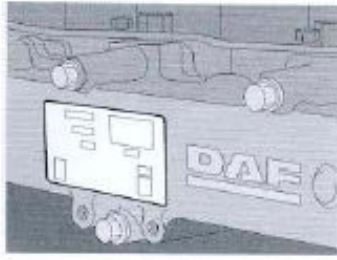
In order to identify whether or not your engine is on the LEC Eligible Engines List, you will need to know the engine manufacturer, the engine model and the engine type designation. Note that the engine manufacturer may be different from the vehicle manufacturer. You can identify your engine make and model from the engine identification data plate or manufacturer's documentation.

### *Engine Identification Data Plates*

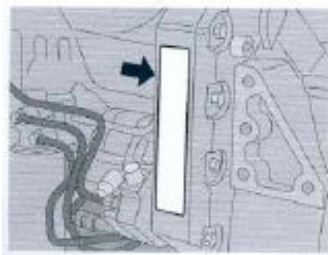
A vehicle's engine identification data plate will provide details of the engine type, engine serial number, and certain other data such as power or speed.

The engine identification data plate is usually attached to the engine itself. Examples of the engine identification plates for DAF engines are shown in Figure 1 below.

**Figure 1**



CF 75/85



CF 65

Figure 2 below is an example of an IVECO vehicle data plate, where the vehicle and engine manufacturer are the same. Other information contained on this example data plate includes the Corrected Adoption Value which identifies the smoke limit that the engine was manufactured to meet.

Figure 2

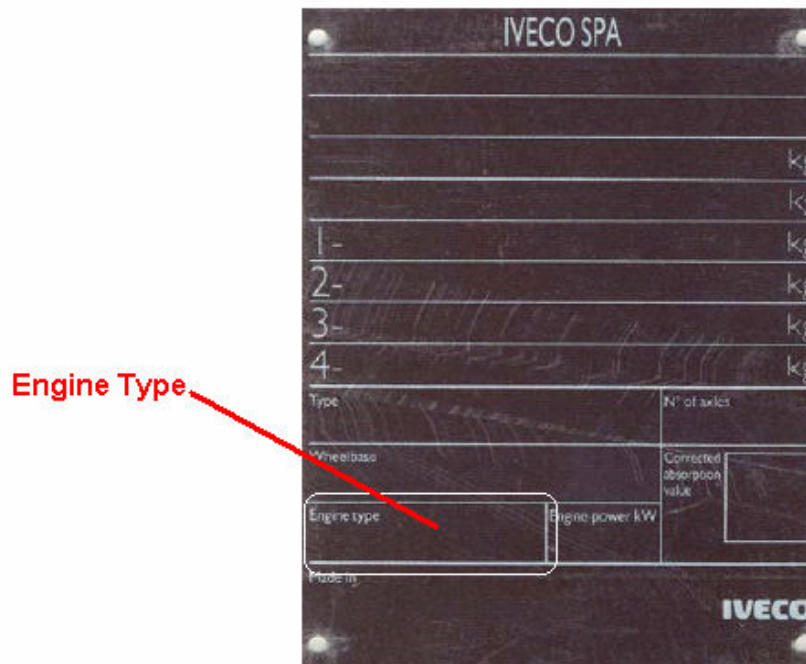
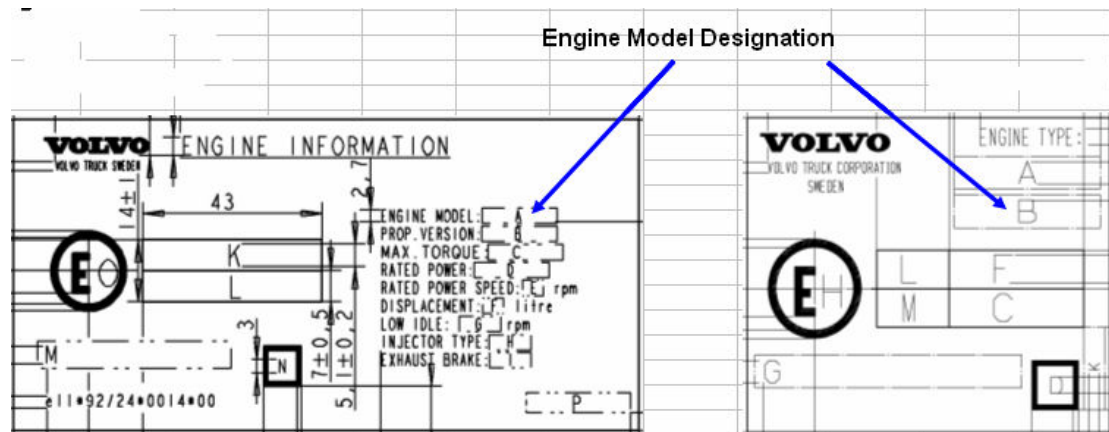


Figure 3 below shows an example of a Volvo truck engine data plate, where the engine manufacturer is different from the vehicle manufacturer.

Figure 3



If you are having difficulty trying to locate the engine identification data plate or any of the information required to match your vehicle engine to those on the LEC Eligible Engines List, please contact your vehicle and/or engine manufacturer.