

King's Cross St. Pancras Underground station development

Underground passenger tunnels

Work is complete on the excavation of passenger tunnels linking the existing tube platforms to the new Northern ticket hall. These tunnels will provide new entrances at different points in the platforms. This will spread the dispersion of passengers entering and exiting platforms, and is a key measure in helping to reduce congestion at King's Cross St. Pancras.



Underground passenger tunnels under construction
© Balfour Beatty Civil Engineering Ltd

Balfour Beatty are currently working to fit-out these tunnels, including installing tunnel lining and ceiling services.

Further line engineering work and platform closures

As part of Phase 2 of the Northern ticket hall works, accessibility improvements are being made to the Northern line platforms. As a result, it is necessary to implement weekend platform closures, which will result in Northern line trains not stopping at King's Cross St. Pancras. These are scheduled to take place on the following dates:

Weekend of 29-30 November 2008

Easter weekend of 10-13 April 2009

All information correct at time of going to print – November 2008



24 hour helpline

0800 169 5416



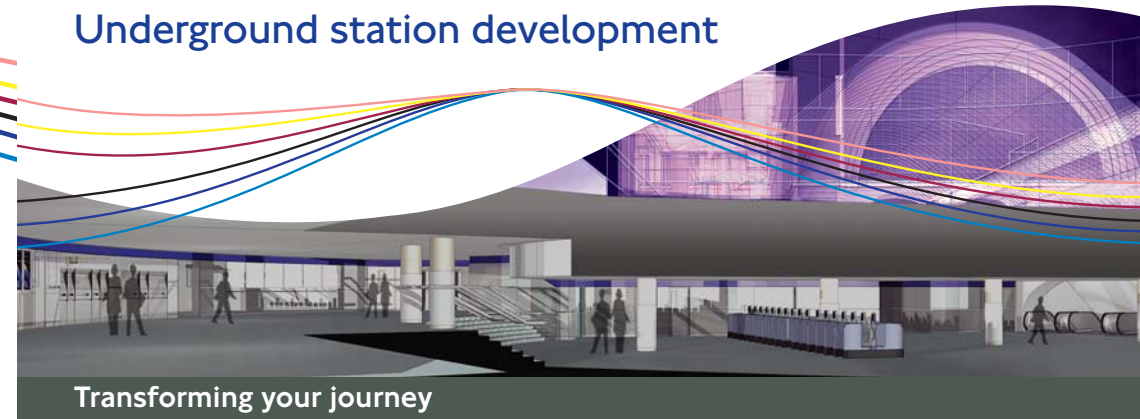
Email

kingscross@cjassociates.co.uk



Website

tfl.gov.uk



Transforming your journey

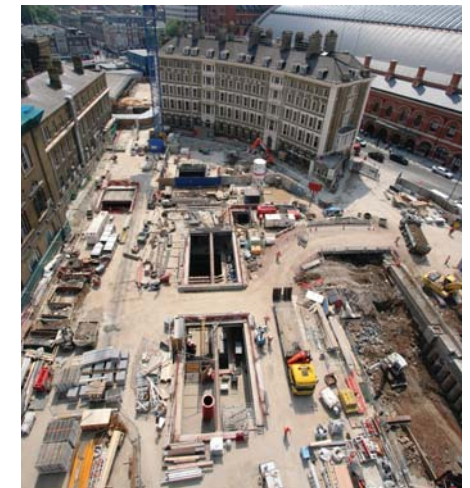
Six month look ahead – November 2008 until April 2009

Overview

The redevelopment of King's Cross St. Pancras Underground station has been ongoing since 2001 and is being undertaken in two phases.

Phase 1 – This involved the refurbishment of the existing Tube ticket hall and construction of a new Western ticket hall for the station. These were opened to the public in May 2006. At the same time the refurbishment of the Metropolitan, Circle and Hammersmith & City line platforms was carried out. Phase 1 has delivered additional capacity, better interchanges and accessibility improvements for passengers.

Phase 2 – The final phase of the redevelopment will be completed in 2010. This will deliver a new, third 'Northern' ticket hall, new pedestrian tunnels to the Northern, Piccadilly and Victoria line platforms and a fully accessible station, with step-free access to all London Underground lines.



Northern ticket hall (under construction)

© Mike Ashton, Balfour Beatty Civil Engineering Ltd

MAYOR OF LONDON

Transport for London



This leaflet gives a brief overview of programmed activities over the next six months, as forecast by the project team. All dates are based on current progress and are therefore provisional. The timescales shown reflect works from November 2008 to April 2009.

Some ongoing works will extend beyond this period. Whilst every effort has been made to inform you of all programmed works over the next six months, from time to time it may be necessary to undertake tasks at short notice which are not covered in this leaflet. In such cases, and where possible, information will be communicated separately.

Work on the new Northern ticket hall has now been underway since May 2006 (although initial piling/enabling works took place in 2002/03). The five-storey sub-surface structure will sit between the Great Northern Hotel and King's Cross mainline station. It will give passengers direct access to the deep level tubes (Northern, Piccadilly and Victoria line platforms) as well as the additional capacity needed for passengers interchanging between national and international services at King's Cross and St. Pancras International rail stations.

Northern ticket hall

Ticket hall construction

The civil engineering works to construct the new Northern ticket hall are virtually complete. The next six months will see mechanical and electrical fit-out works continue. This will include the ongoing delivery and installation of escalator sections to the ticket hall and pedestrian tunnels. Work also involves the completion of ceiling services installation. This involves all service components including electrical wiring being installed within the ticket hall ceilings.



Northern ticket hall (under construction) © Balfour Beatty Civil Engineering Ltd

- The provision of electrical power for the ticket hall will be achieved in November.
- The next six months will see works commence to install the tiled ceiling within the Northern ticket hall.
- Works will also include the installation of step-free access lifts within the Northern ticket hall.

Works within the Tube ticket hall

As part of the ongoing redevelopment, London Underground will be undertaking works within the existing Tube station. This will include the installation of temporary hoarding panels within the Tube ticket hall. It will also involve the anticipated full closure of the existing entry/exit leading from the Tube ticket hall to the bottom of the staircase into King's Cross mainline station. London Underground is currently consulting with Network Rail regarding this closure and information will be displayed at the station once agreed. This work is to facilitate the construction of a step-free access lift to the Northern line platforms.

South East stairs

November to April will see the completion of works to construct a staircase linking King's Cross mainline station with King's Cross St. Pancras Underground station. This staircase is located at the South East section of the Northern ticket hall site (south of the covered walkway between King's Cross and the Pancras Road taxi rank). This staircase is scheduled to open at the same time as the Northern ticket hall and will provide direct access between King's Cross and the Underground station.

Handover to Network Rail

As part of the wider regeneration of the King's Cross area, Network Rail have started work on their redevelopment of King's Cross mainline station. This includes the construction of a new Western Concourse directly above the Northern ticket hall. London Underground have handed over the land above the Northern ticket hall and the vent structure (known as the Bomb Gap, due to damage sustained during World War II) to Network Rail, so that they can begin their works in this area.

Tunnel lining replacement works

Work is proceeding to replace the tunnel lining in the old King's Cross Thameslink passenger tunnel. This tunnel leads from the Pentonville Road entrance/exit at King's Cross St. Pancras to the Victoria and Piccadilly lines. This work will help to improve the appearance of the station and passenger tunnels. We apologise for any inconvenience whilst this work is carried out.