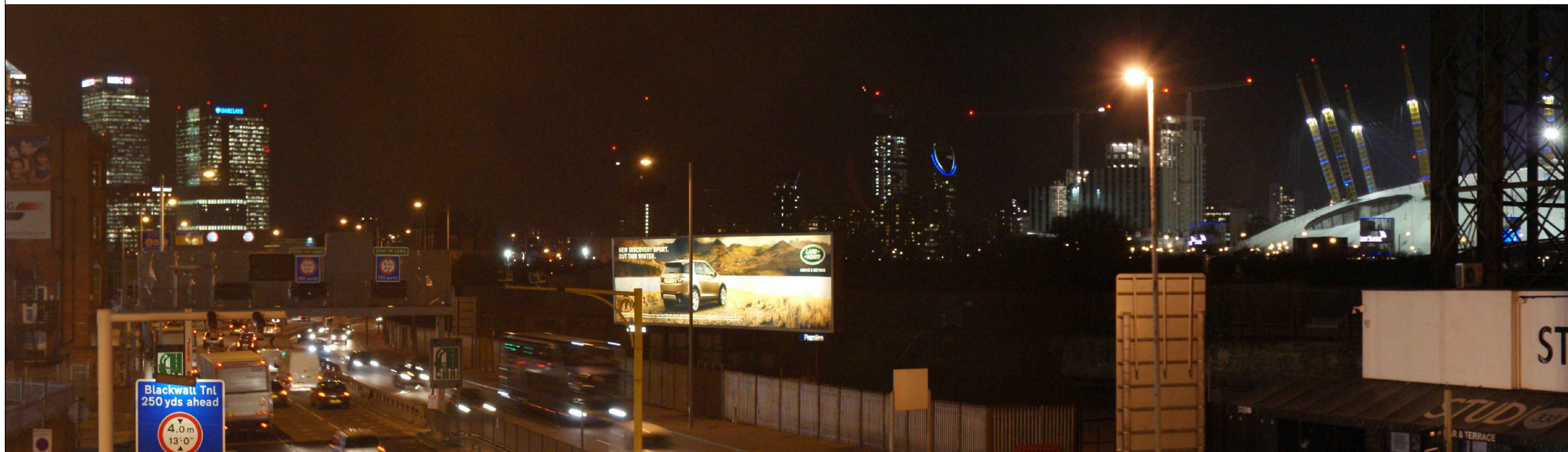




VIEWPOINT 3 - DAY TIME VIEW FROM PEDESTRIAN FOOTBRIDGE OVER A102 AT BOORD STREET, LOOKING NORTH WEST



VIEWPOINT 3 - NIGHT TIME VIEW FROM PEDESTRIAN FOOTBRIDGE OVER A102 AT BOORD STREET, LOOKING NORTH WEST

Notes  
 THIS DRAWING IS SCALED AT PAPER SIZE A3,  
 THEREFORE ANY PRINTS TAKEN AT SMALLER SIZES  
 WILL AFFECT ACCURACY OF THE MEASUREMENT UNITS  
 AND SHOULD NOT BE SCALED AGAINST

Coordinate System: British National Grid  
 Units: Metre

NTS

REPRODUCTION FROM ORDNANCE SURVEY MAPS, BY  
 PERMISSION OF THE ORDNANCE SURVEY ON BEHALF OF  
 THE CONTROLLER OF HER MAJESTY'S STATIONERY  
 OFFICE. © CROWN COPYRIGHT ORDNANCE SURVEY. OS  
 LICENCE NO. 100035971/0160  
 THIS PLAN IS PRODUCED TO ASSIST WITH THE ASSESSMENT  
 OF THE PRELIMINARY ENVIRONMENTAL INFORMATION. IT IS  
 ISSUED WITHOUT PREJUDICE TO THE SCOPE, CONTENT AND  
 ORDER LAND IN ANY SUBSEQUENT APPLICATION FOR  
 DEVELOPMENT CONSENT

Client



ISSUE	DATE	COMMENTS	DRAWN	CHKD	APP'D
A	28.08.15		RG	MC	CSS

Title	
SILVERTOWN TUNNEL: PRELIMINARY ENVIRONMENTAL INFORMATION REPORT  PANORAMIC VIEWS	
APPLICATION No.	GIS
DRAWING No.	A3
15.2 (SHEET 3 OF 4)	SCALE NTS
	ISSUE A