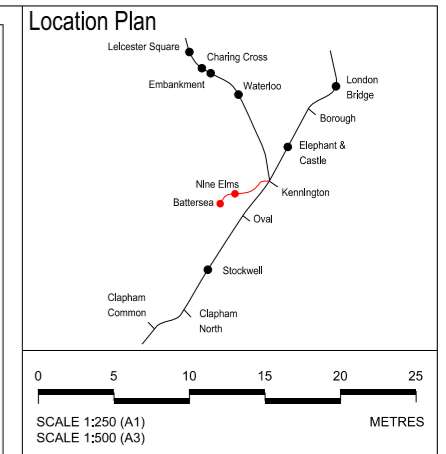




KEY

- Building
- Footpath
- Grassed area
- Low brick wall
- Existing trees
- Distillery boundary wall
- Cycle stands



Rev	By	Chkd	App	Date	Description
07	YT	KW	HA	27/03/13	Formal issue to client
06	YT	KW	HA	25/03/13	Formal issue
05	KD	KW	KW	18/03/13	Planning direction drawing number amended, minor amendments
04	KD	KW	KW	15/03/13	Planning direction drawing number amended
03	YT	KW	HA	11/03/13	Planning direction drawing number amended
02	YT	KW	HA	07/03/13	Planning direction drawing number added
01	YT	KW	HA	04/03/13	Minor Amendments
00	YT	KW	HA	19/02/13	Draft

Client
Transport for London

JOHN MCASLAN + PARTNERS
studiodareARCHITECTS
Buro Happold
Consulting Engineers

Halcrow Group Ltd.
A CH2M HILL COMPANY
Elms House, 43 Brook Green
Hammersmith, London W6 7EP
TEL: 020 3479 8000
FAX: 020 3479 8001
www.halcrow.com

Project:
**NORTHERN LINE EXTENSION
TO BATTERSEA
PLANNING DIRECTION DRAWINGS**

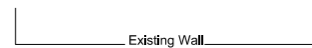
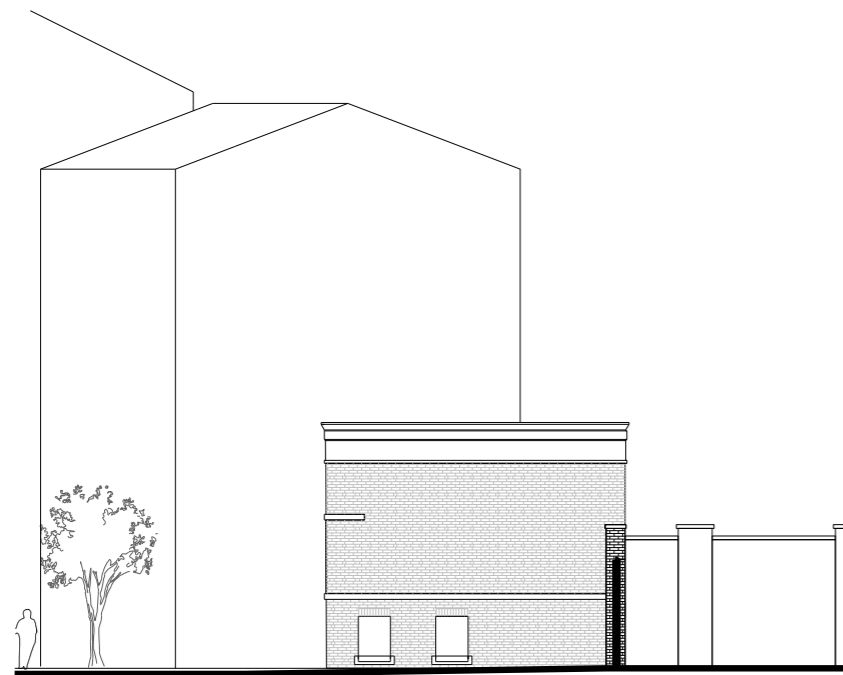
Drawing:
**KENNINGTON GREEN HEAD HOUSE
EXISTING SITE PLAN**

Suitability:
S4 FORMAL ISSUE TO CLIENT

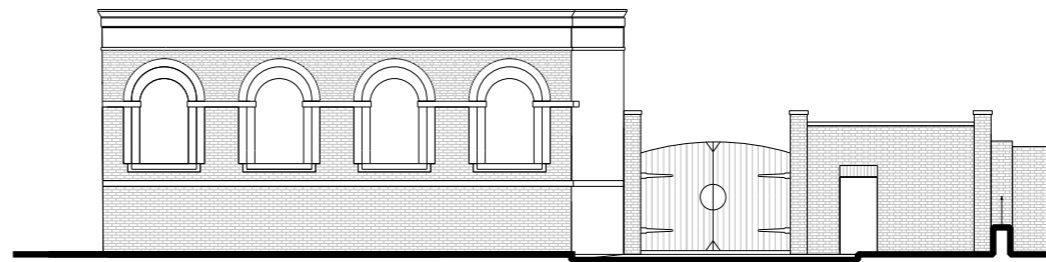
Drawn by: WS Date: 19/02/13
Checked by: KW Date: 19/02/13
Approved by: HA Date: 19/02/13
Drawing Scale: 1:250 @ A1 or 1:500 @ A3

Drawing No.: **1453-KG-G710-XP-00** RevB/cor: **07**

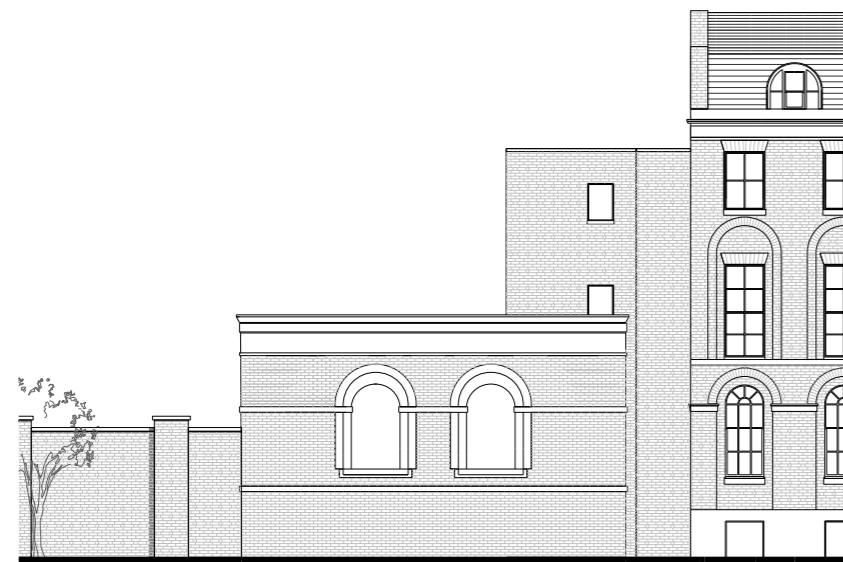
PLANNING DIRECTION DRAWING NUMBER 57



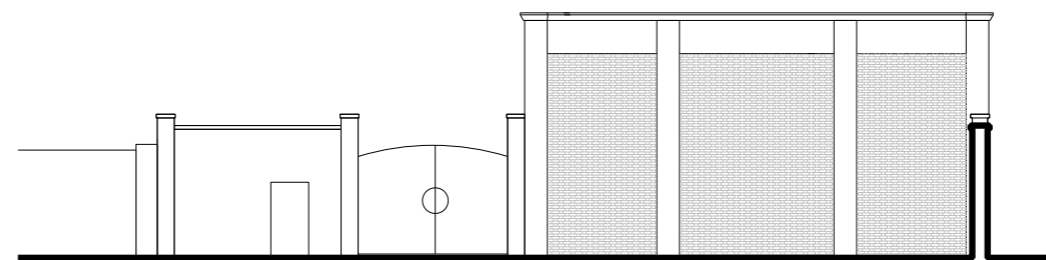
NORTH ELEVATION



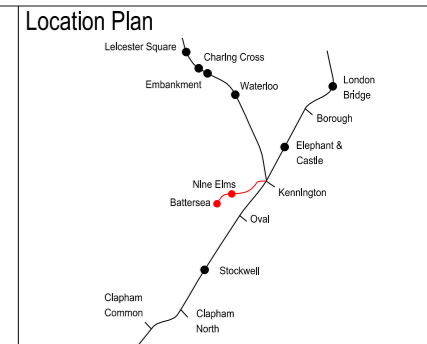
EAST ELEVATION



SOUTH ELEVATION



WEST ELEVATION



Rev	By	Chkd	App	Date	Description
06	KD	KW	KW	25/03/13	Formal issue
05	KD	KW	KW	18/03/13	Minor Amendments
04	KD	KW	KW	15/03/13	Planning Direction Drawing Number Amended
03	KD	KW	KW	08/03/13	Planning Direction Drawing Number Amended
02	KD	KW	KW	07/03/13	Planning Direction Drawing Number Added
01	KD	KW	KW	04/03/13	Minor Amendments

Client
Transport for London

JOHN MCASLAN + PARTNERS
studiodareARCHITECTS
Buro Happold
Consulting Engineers

Halcrow Group Ltd,
A CH2M HILL COMPANY
Elms House, 43 Brook Green
Hammersmith, London W6 7EP
TEL: 020 3479 8000
FAX: 020 3479 8001
www.halcrow.com



Project:
**NORTHERN LINE EXTENSION
TO BATTERSEA
PLANNING DIRECTION DRAWINGS**

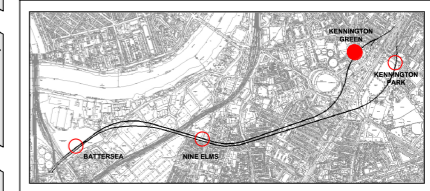
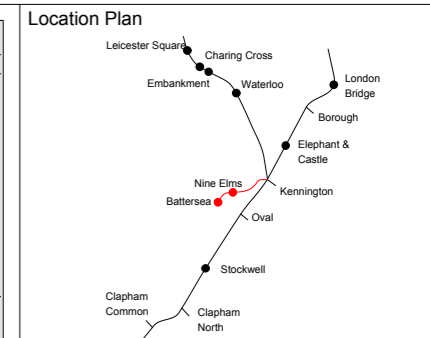
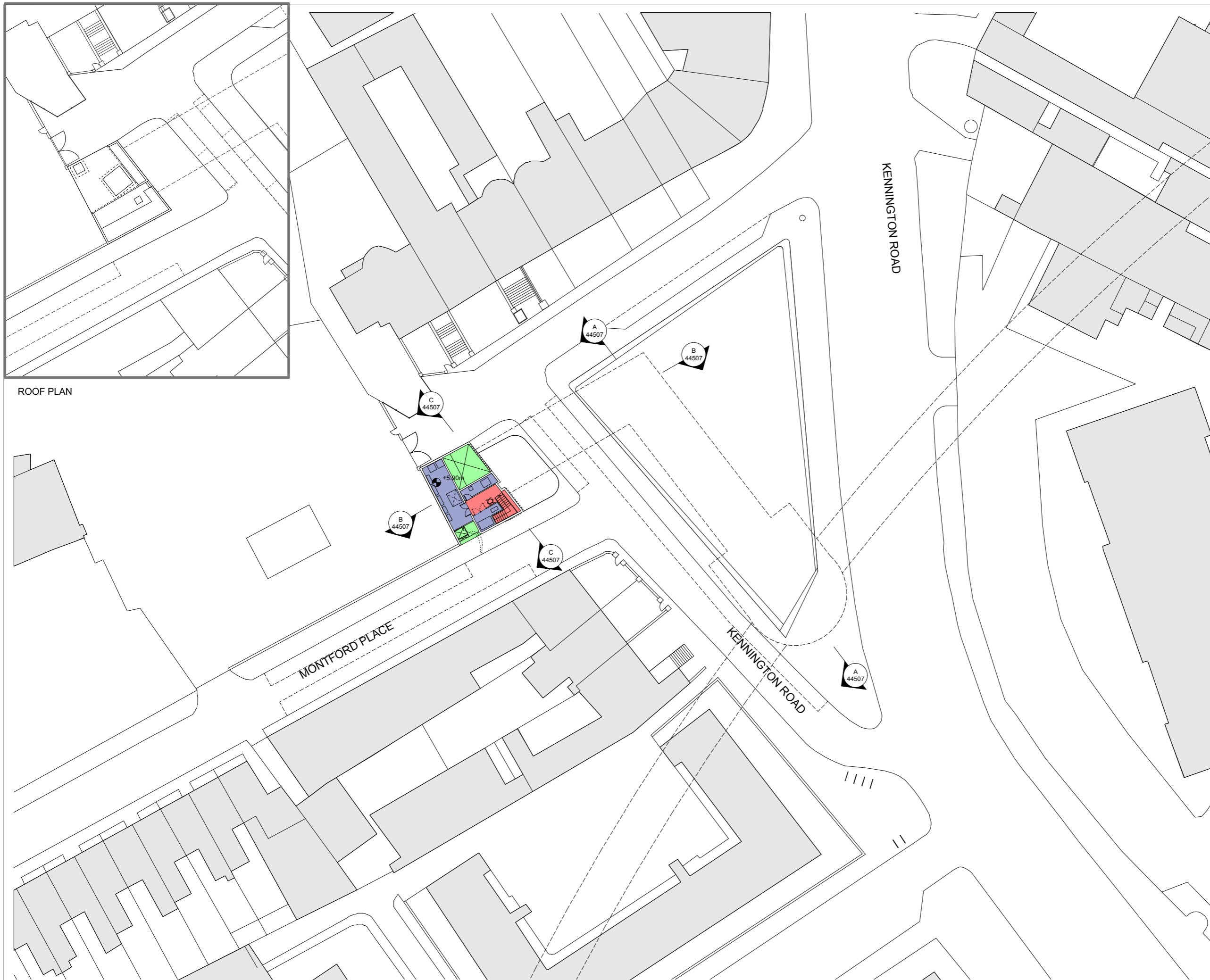
Drawing:
**KENNINGTON GREEN HEAD HOUSE
EXISTING
ELEVATIONS**

Submittal:
S4 FORMAL ISSUE TO CLIENT

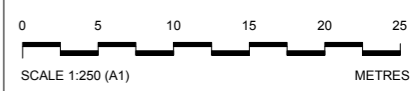
Drawn by: KD Date: 04/03/13
Checked by: KW Date: 04/03/13
Approved by: KW Date: 04/03/13
Drawing Scale: 1:100 @ A1 or 1:200 @ A3

Drawing No.: **1453-KG-F000-XE-01** Revision: **06**

PLANNING DIRECTION DRAWING NUMBER 58



Canopy / Rooflight
Forecourt / Access
Tickethall / Entrance
Paid Concourse
Internal Accommodation
Ducts / Risers
Lift
Emergency Lift (plant replacement)
Escape Route



This drawing is illustrative only. Detailed design will be subject for further approval.

Rev	By	Chkd	Apprvd	Date	Description
04	NV	FM	SL	25/03/13	Formal Issue
03	NV	FM	SL	20/03/13	General Update
02	NV	FM	SL	11/03/13	General Update
01	SM	FM	SL	04/03/13	First Drawn

Client

Transport for London



Halcrow Group Ltd.
A CH2M HILL COMPANY
Elms House, 43 Brook Green
Hammersmith, London W6 7EP
TEL: 020 3479 8000
FAX: 020 3479 8001
www.halcrow.com



Project: **NORTHERN LINE EXTENSION TO BATTERSEA
PLANNING DIRECTION DRAWINGS**

Drawing: **KENNINGTON GREEN**

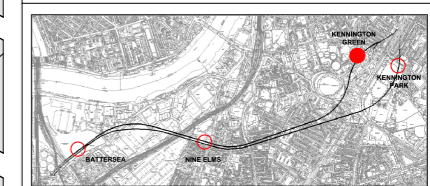
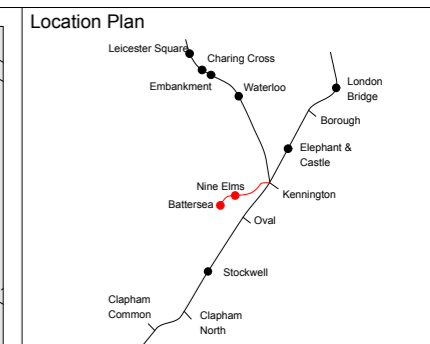
FIRST FLOOR LEVEL AND ROOF PLAN

Suitability: **S4 FORMAL ISSUE TO CLIENT**

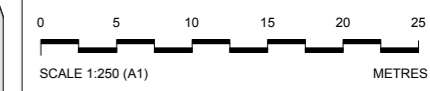
Drawn by: NV	Date: 04/03/13
Checked by: FM	Date: 04/03/13
Approved by: SL	Date: 04/03/13
Drawing Scale: 1:250 @ A1 or 1:500 @ A3	

Drawing No.: **GRNLEB-SDA-TU-XX-DR-ARC-44501** Revision: **04**

PLANNING DIRECTION DRAWING NUMBER 59



	Canopy / Rooflight
	Forecourt / Access
	Tickethall / Entrance
	Paid Concourse
	Internal Accommodation
	Ducts / Risers
	Lift
	Emergency Lift (plant replacement)
	Escape Route



This drawing is illustrative only. Detailed design will be subject for further approval.

Rev	By	Chkd	Apprvd	Date	Description
03	NV	FM	SL	20/03/13	General Update
02	NV	FM	SL	11/03/13	General Update
01	SM	FM	SL	04/03/13	First Drawn

Client
Transport for London

studiodareARCHITECTS Buro Happold
Consulting Engineers

Halcrow Group Ltd.
A CH2M HILL COMPANY
Elms House, 43 Brook Green
HammerSmith, London W6 7EP
TEL: 020 3479 8000
FAX: 020 3479 8001
www.halcrow.com

Project:
**NORTHERN LINE EXTENSION
TO BATTERSEA
PLANNING DIRECTION DRAWINGS**

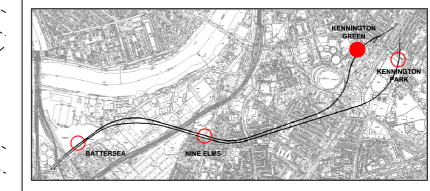
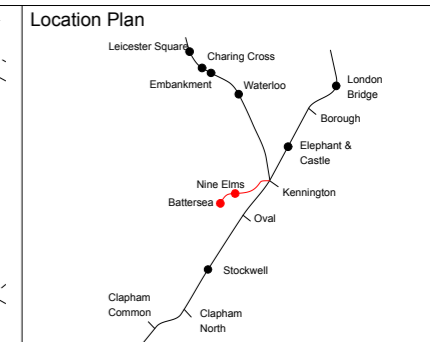
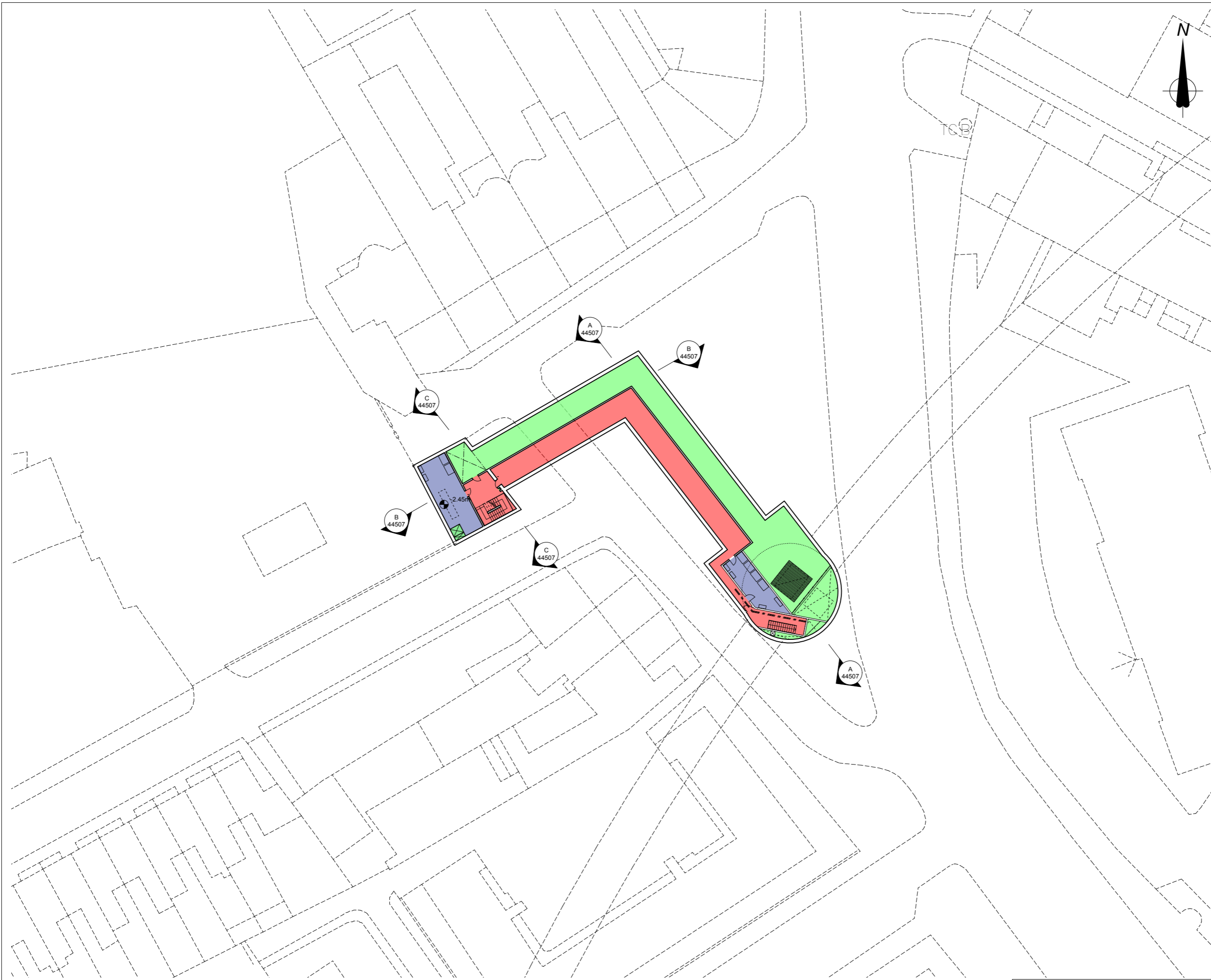
Drawing:
**KENNINGTON GREEN
GROUND LEVEL**

Suitability:
S4 FORMAL ISSUE TO CLIENT

Drawn by: NV Date: 04/03/13
Checked by: FM Date: 04/03/13
Approved by: SL Date: 04/03/13
Drawing Scale: 1:250 @ A1 or 1:500 @ A3

Drawing No: GRNLEB-SDA-TU-XX-DR-ARC-44502 Revision: 04

PLANNING DIRECTION DRAWING NUMBER 60



Canopy / Rooflight
Forecourt / Access
Tickethall / Entrance
Paid Concourse
Internal Accommodation
Ducts / Risers
Lift
Emergency Lift (plant replacement)
Escape Route



Internal layouts are illustrative only.

Rev	By	Chkd	Apprvd	Date	Description
04	NV	FM	SL	25/03/13	Formal Issue
03	NV	FM	SL	20/03/13	General Update
02	NV	FM	SL	11/03/13	General Update
01	SM	FM	SL	04/03/13	First Drawn

Client
Transport for London



Halcrow Group Ltd.
A CH2M HILL COMPANY
Elms House, 43 Brook Green
HammerSmith, London W6 7EP
TEL: 020 3479 8000
FAX: 020 3479 8001
www.halcrow.com



Project:
**NORTHERN LINE EXTENSION
TO BATTERSEA
PLANNING DIRECTION DRAWINGS**

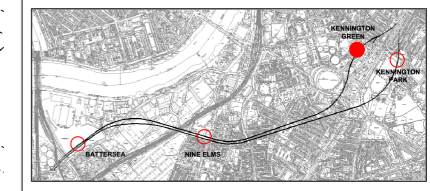
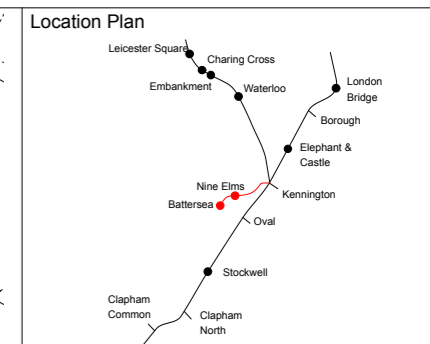
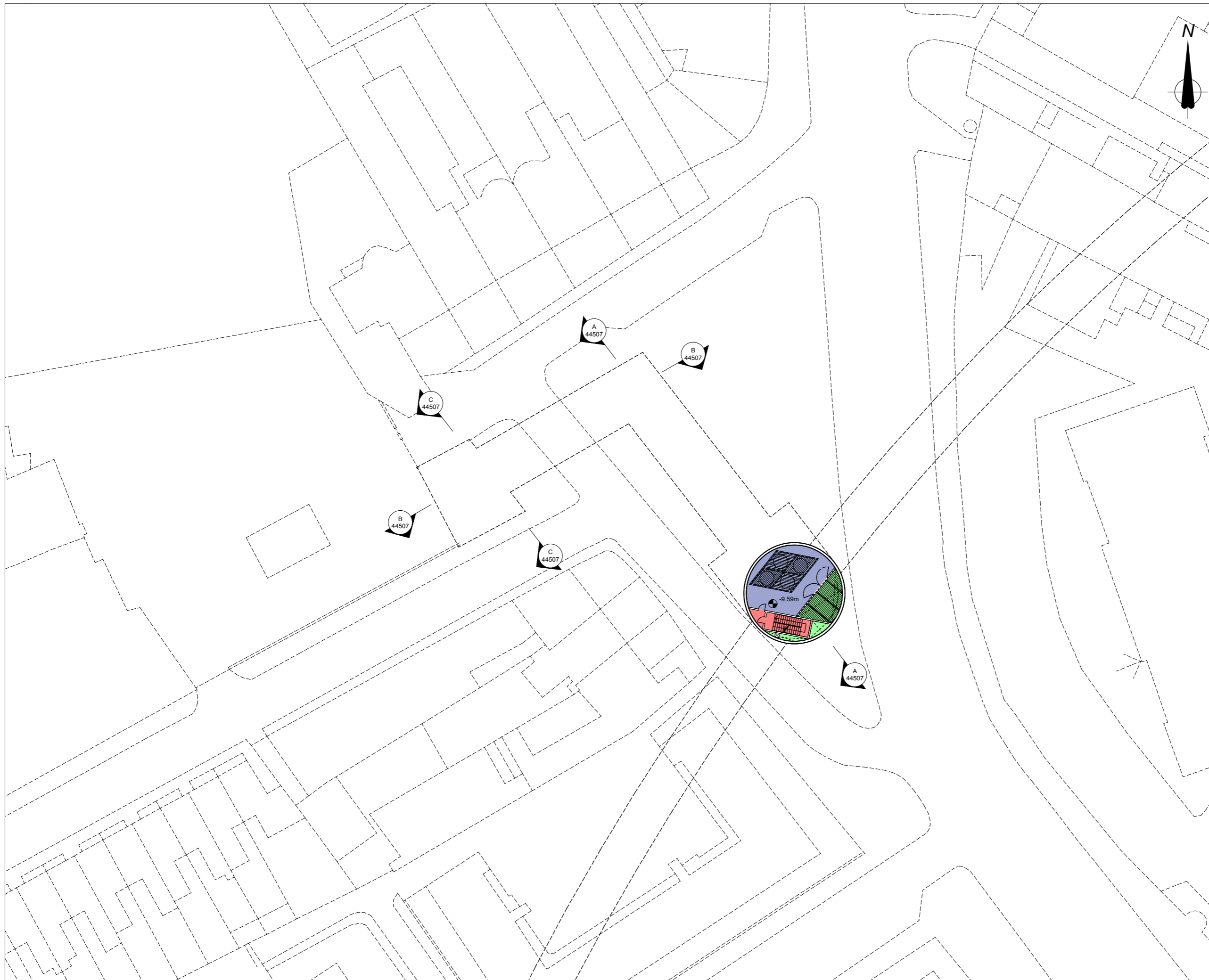
Drawing:
**KENNINGTON GREEN
BASEMENT 01 LEVEL**

Suitability:
S4 FORMAL ISSUE TO CLIENT

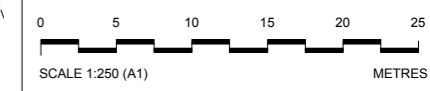
Drawn by: NV Date: 04/03/13
Checked by: FM Date: 04/03/13
Approved by: SL Date: 04/03/13
Drawing Scale: 1:250 @ A1 or 1:500 @ A3

Drawing No: **GRNLEB-SDA-TU-XX-DR-ARC-44503** Revision: **04**

PLANNING DIRECTION DRAWING NUMBER 61



Canopy / Rooflight
Forecourt / Access
Tickethall / Entrance
Paid Concourse
Internal Accommodation
Ducts / Risers
Lift
Emergency Lift (plant replacement)
Escape Route



Internal layouts are illustrative only.

Rev	By	Chkd	Apprvd	Date	Description
05	NV	FM	SL	13/04/13	General Update
04	NV	FM	SL	25/03/13	Formal Issue
03	NV	FM	SL	20/03/13	General Update
02	NV	FM	SL	11/03/13	General Update
01	SM	FM	SL	04/03/13	First Drawn

Client
Transport for London

studiodareARCHITECTS
Buro Happold
Consulting Engineers

Halcrow Group Ltd.
A CH2M HILL COMPANY
Elms House, 43 Brook Green
HammerSmith, London W6 7EP
TEL: 020 3479 8000
FAX: 020 3479 8001
www.halcrow.com



Project:
**NORTHERN LINE EXTENSION
TO BATTERSEA
PLANNING DIRECTION DRAWINGS**

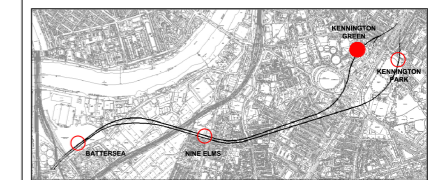
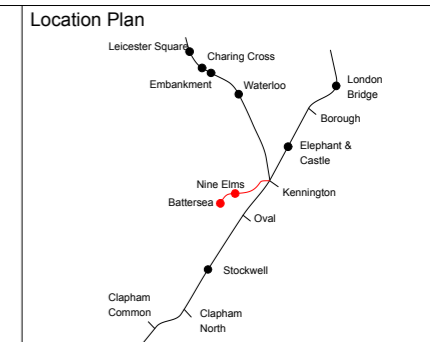
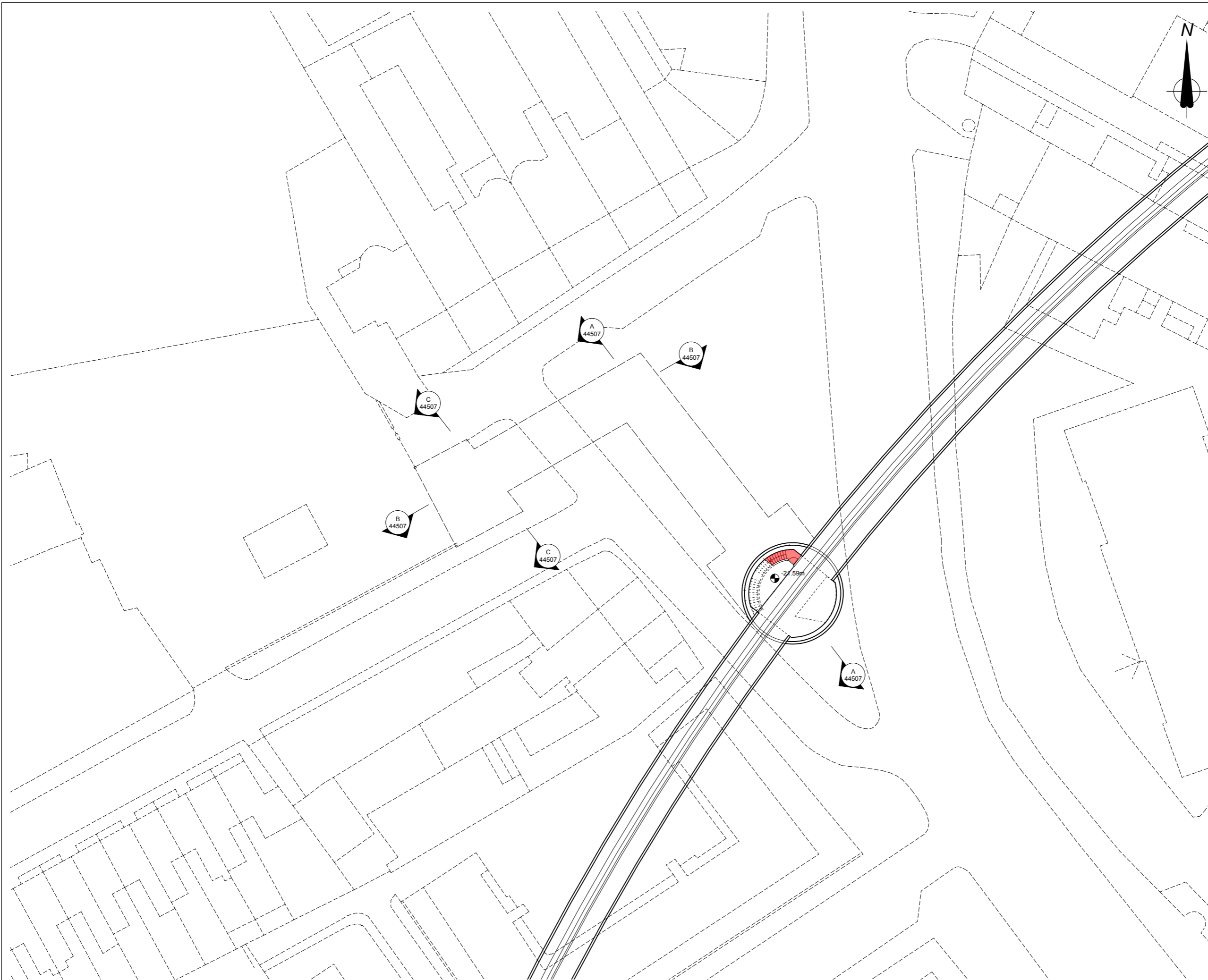
Drawing:
**KENNINGTON GREEN
BASEMENT 02 LEVEL**

Suitability:
S4 FORMAL ISSUE TO CLIENT

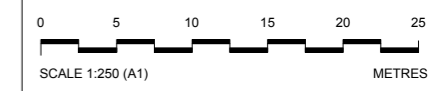
Drawn by: NV Date: 04/03/13
Checked by: FM Date: 04/03/13
Approved by: SL Date: 04/03/13
Drawing Scale: 1:250 @ A1 or 1:500 @ A3

Drawing No: GRNLEB-SDA-TU-XX-DR-ARC-44504 Revision: 05

PLANNING DIRECTION DRAWING NUMBER 62



Canopy / Rooflight
Forecourt / Access
Tickethall / Entrance
Paid Concourse
Internal Accommodation
Ducts / Risers
Lift
Emergency Lift (plant replacement)
Escape Route



Internal layouts are illustrative only.

Rev	By	Chkd	Apprvd	Date	Description
04	NV	FM	SL	25/03/13	Formal Issue
03	NV	FM	SL	20/03/13	General Update
02	NV	FM	SL	11/03/13	General Update
01	SM	FM	SL	04/03/13	First Drawn

Client

Transport for London



Halcrow Group Ltd.
A CH2M HILL COMPANY
Elms House, 43 Brook Green
HammerSmith, London W6 7EF
TEL: 020 3479 8000
FAX: 020 3479 8001
www.halcrow.com



Project: **NORTHERN LINE EXTENSION TO BATTERSEA PLANNING DIRECTION DRAWINGS**

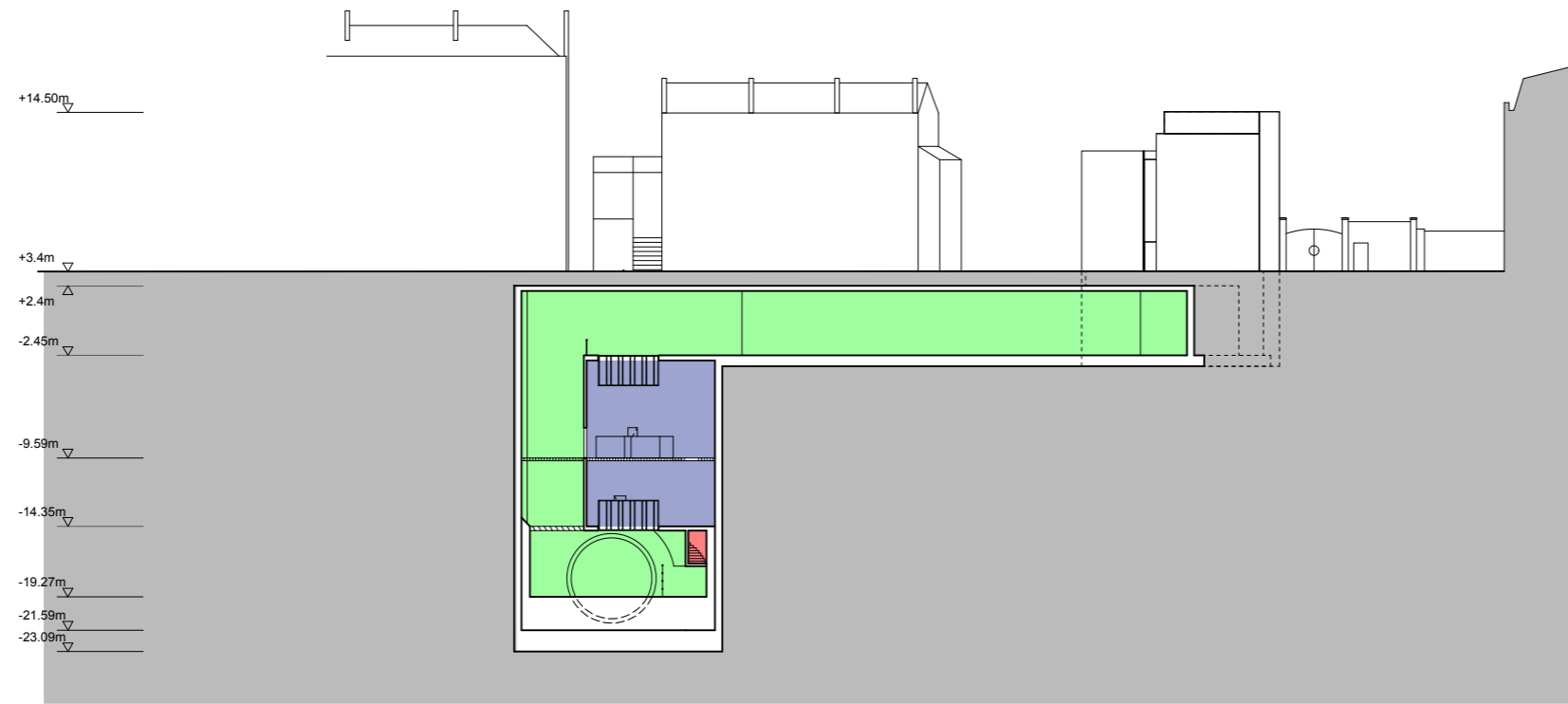
Drawing: **KENNINGTON GREEN TRACK LEVEL**

Suitability: **S4 FORMAL ISSUE TO CLIENT**

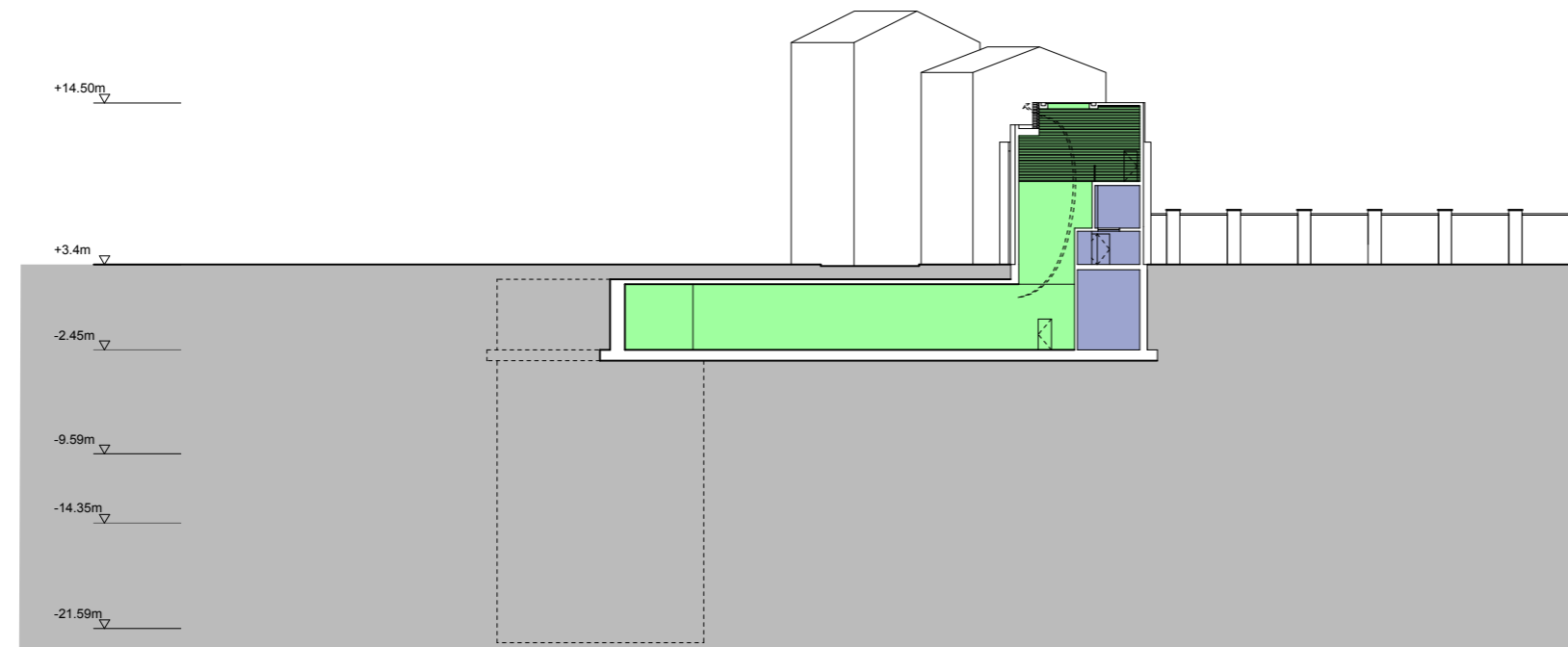
Drawn by: NV Date: 04/03/13
Checked by: FM Date: 04/03/13
Approved by: SL Date: 04/03/13
Drawing Scale: 1:250 @ A1 or 1:500 @ A3

Drawing No: **GRNLEB-SDA-TU-XX-DR-ARC-44506** Revision: **04**

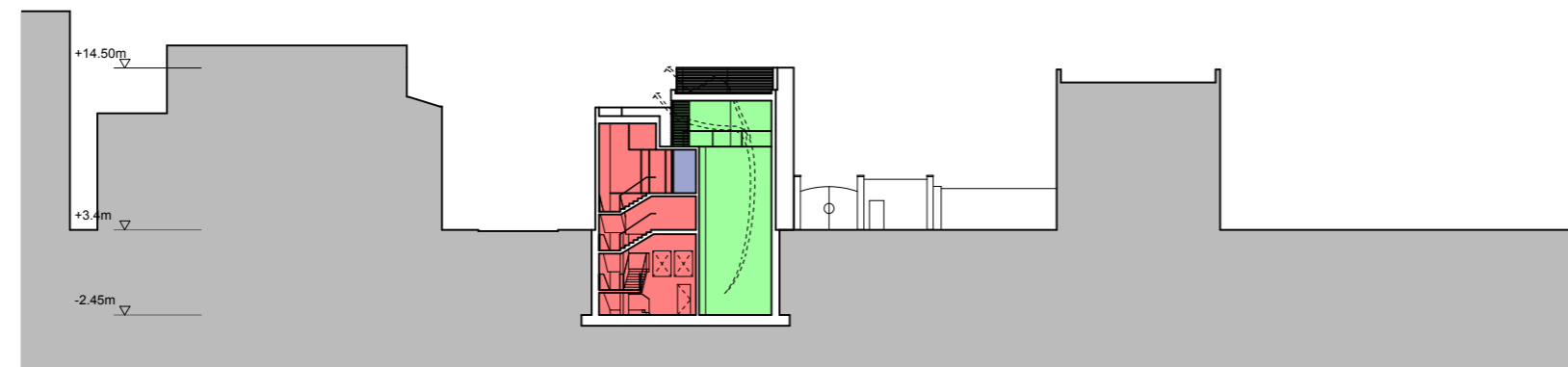
PLANNING DIRECTION DRAWING NUMBER 63



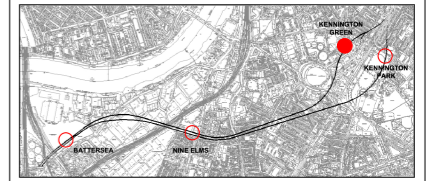
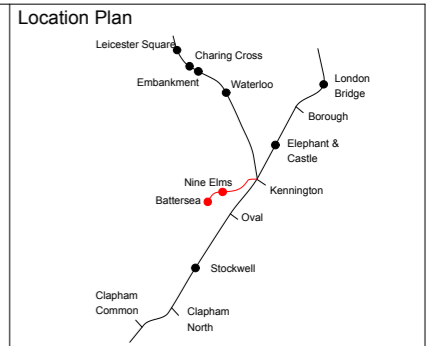
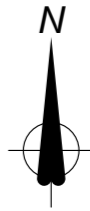
SECTION AA



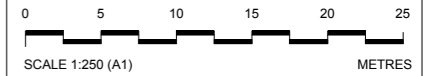
SECTION BB



SECTION CC



Canopy / Rooflight
Forecourt / Access
Tickethall / Entrance
Paid Concourse
Internal Accommodation
Ducts / Risers
Lift
Emergency Lift (plant replacement)
Escape Route



Internal layouts are illustrative only. Detailed design for above ground elements will be subject to further approvals.

Rev	By	Chkd	Apprvd	Date	Description
04	NV	FM	SL	25/03/13	Formal Issue
03	NV	FM	SL	20/03/13	General Update
02	NV	FM	SL	11/03/13	General Update
01	SM	FM	SL	04/03/13	First Drawn

Client
Transport for London

studiodareARCHITECTS
Buro Happold
Consulting Engineers

Halcrow Group Ltd.
A CH2M HILL COMPANY
Elms House, 43 Brook Green
Hammersmith, London W6 7EP
TEL: 020 3479 8000
FAX: 020 3479 8001
www.halcrow.com



Project:
**NORTHERN LINE EXTENSION
TO BATTERSEA
PLANNING DIRECTION DRAWINGS**

Drawing:
**KENNINGTON GREEN
SECTIONS AA, BB, CC**

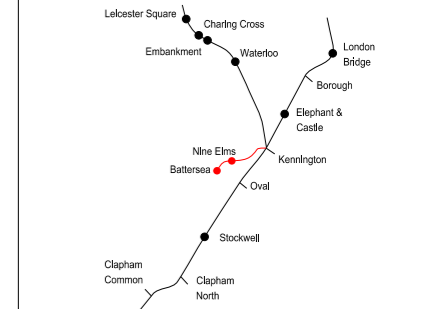
Suitability:
S4 FORMAL ISSUE TO CLIENT

Drawn by: NV Date: 04/03/13
Checked by: FM Date: 04/03/13
Approved by: SL Date: 04/03/13
Drawing Scale: 1:250 @ A1 or 1:500 @ A3

Drawing No.: GRNLEB-SDA-TU-XX-DR-ARC-44507 Revision: 04

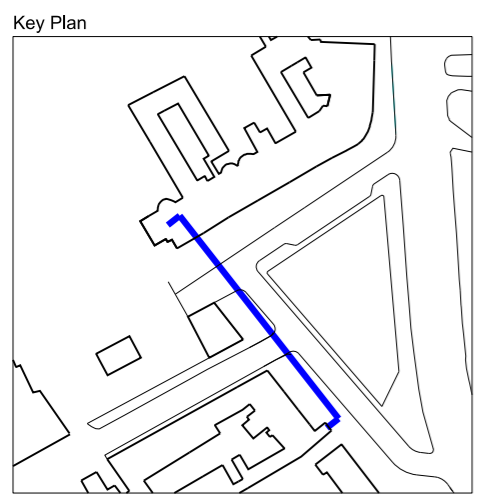
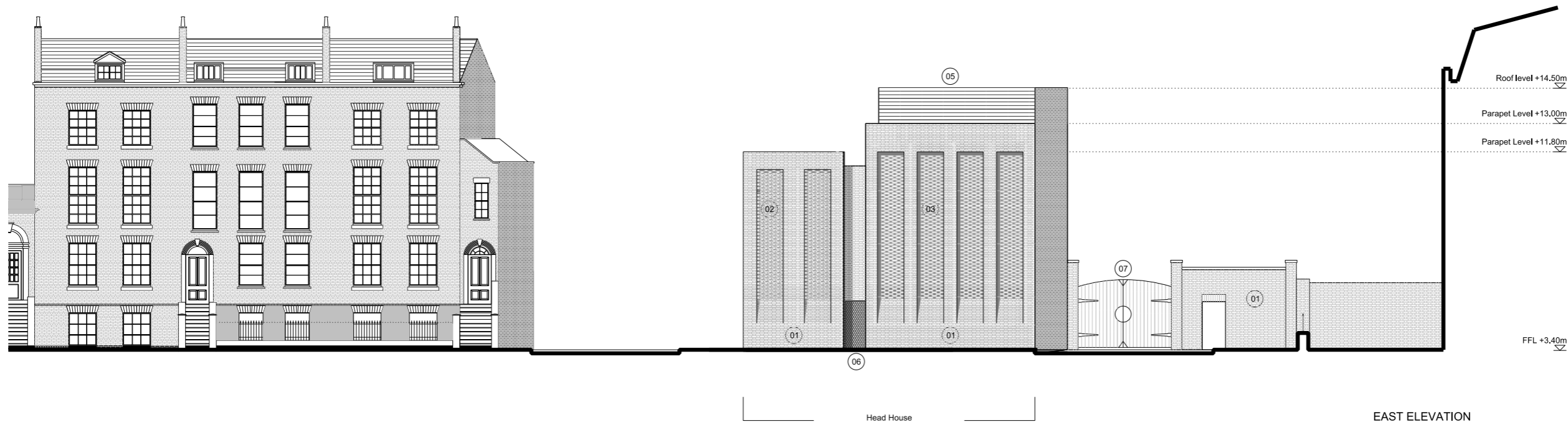
PLANNING DIRECTION DRAWING NUMBER 64

Location Plan



0 2 4 6 8 10
 SCALE 1:100 (A1)
 SCALE 1:200 (A3) METRES

This drawing is for approval save for internal layouts which are illustrative only.



Materials Key

01	London stock brick
02	Protruding headers
03	Lattice brick
04	Metal Mesh
05	Louvres
06	Metal Door
07	Existing Gate to be Reinstated

PLANNING DIRECTION DRAWING NUMBER 65

Rev	By	Chkd	App	Date	Description
07	KD	KW	KW	25/03/13	Formal Issue
06	KD	KW	KW	18/03/13	Amendments to Elevation
05	KD	KW	KW	15/03/13	Amendments to Elevation
04	KD	KW	KW	13/03/13	Minor Amendments
03	KD	KW	KW	08/03/13	Planning Direction Drawing Number Amended
02	KD	KW	KW	07/03/13	Planning Direction Drawing Number Added
01	KD	KW	KW	04/03/13	Engineering Changes and Minor Amendments

Client
Transport for London

JOHN MCASLAN + PARTNERS
 studiosdareARCHITECTS
 Buro Happold
 Consulting Engineers

Halcrow Group Ltd,
 A CH2M HILL COMPANY
 Elms House, 43 Brook Green
 Hammersmith, London W6 7EP
 TEL: 020 3479 8000
 FAX: 020 3479 8001
 www.halcrow.com

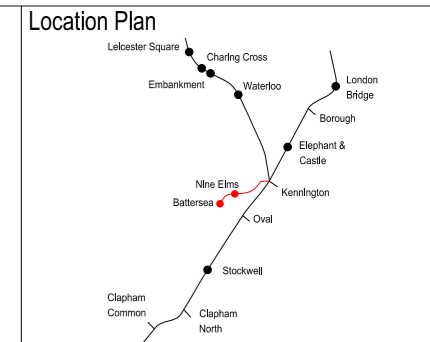
Project:
**NORTHERN LINE EXTENSION
 TO BATTERSEA
 PLANNING DIRECTION DRAWINGS**

Drawing:
**KENNINGTON GREEN HEAD HOUSE
 PROPOSED
 EAST ELEVATION**

Submittal:
S4 FORMAL ISSUE TO CLIENT

Drawn by: KD Date: 04/03/13
 Checked by: KW Date: 04/03/13
 Approved by: KW Date: 04/03/13
 Drawing Scale: 1:100 @ A1 or 1:200 @ A3

Drawing No.: **1453-KG-F000-E-01** Revision: **07**

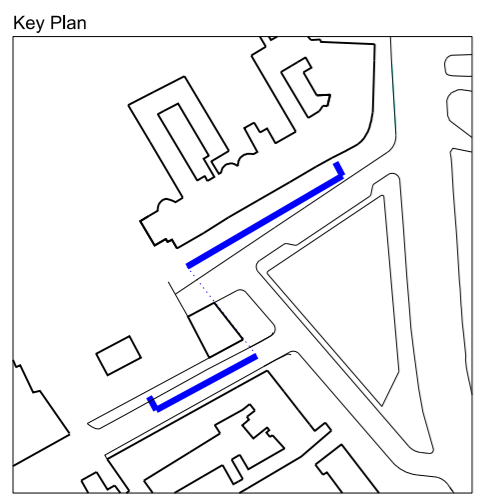


0 2 4 6 8 10
 SCALE 1:100 (A1)
 SCALE 1:200 (A3) METRES

This drawing is for approval save for internal layouts which are illustrative only.



SOUTH ELEVATION



Materials Key

01	London stock brick
02	Protruding headers
03	Lattice brick
04	Metal Mesh
05	Louvres
06	Metal Door
07	Existing Gate to be Reinstated

PLANNING DIRECTION DRAWING NUMBER 66

Rev	By	Chkd	App	Date	Description
08	KD	KW	KW	25/03/13	Formal Issue
07	KD	KW	KW	18/03/13	Amendments to Elevation
06	KD	KW	KW	15/03/13	Amendments to Elevation
05	KD	KW	KW	08/03/13	Minor Amendments
04	KD	KW	KW	08/03/13	Planning Direction Drawing Number Amended
03	KD	KW	KW	07/03/13	Planning Direction Drawing Number Added
02	KD	KW	KW	04/03/13	Engineering Changes and Minor Amendments
01	KW	KW	KW	27/02/13	Engineering changes

Client
Transport for London

JOHN MCASLAN + PARTNERS
 studiosdareARCHITECTS
 Buro Happold
 Consulting Engineers

Halcrow Group Ltd,
 A CH2M HILL COMPANY
 Elms House, 43 Brook Green
 Hammersmith, London W6 7EP
 TEL: 020 3479 8000
 FAX: 020 3479 8001
 www.halcrow.com

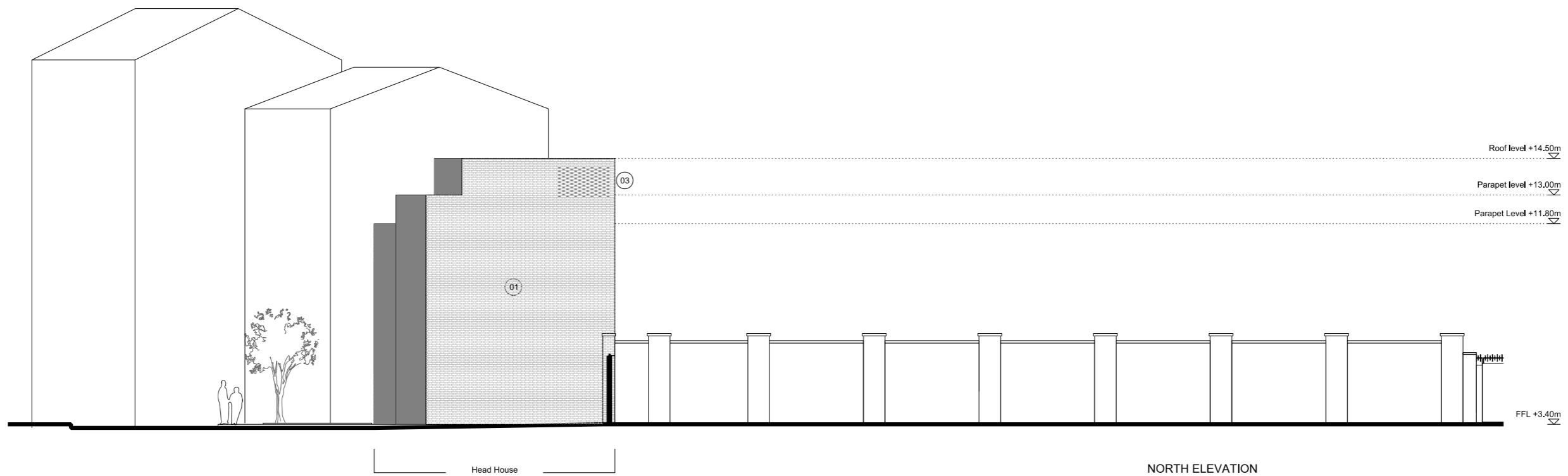
Project:
**NORTHERN LINE EXTENSION
 TO BATTERSEA
 PLANNING DIRECTION DRAWINGS**

Drawing:
**KENNINGTON GREEN HEAD HOUSE
 PROPOSED
 SOUTH ELEVATION**

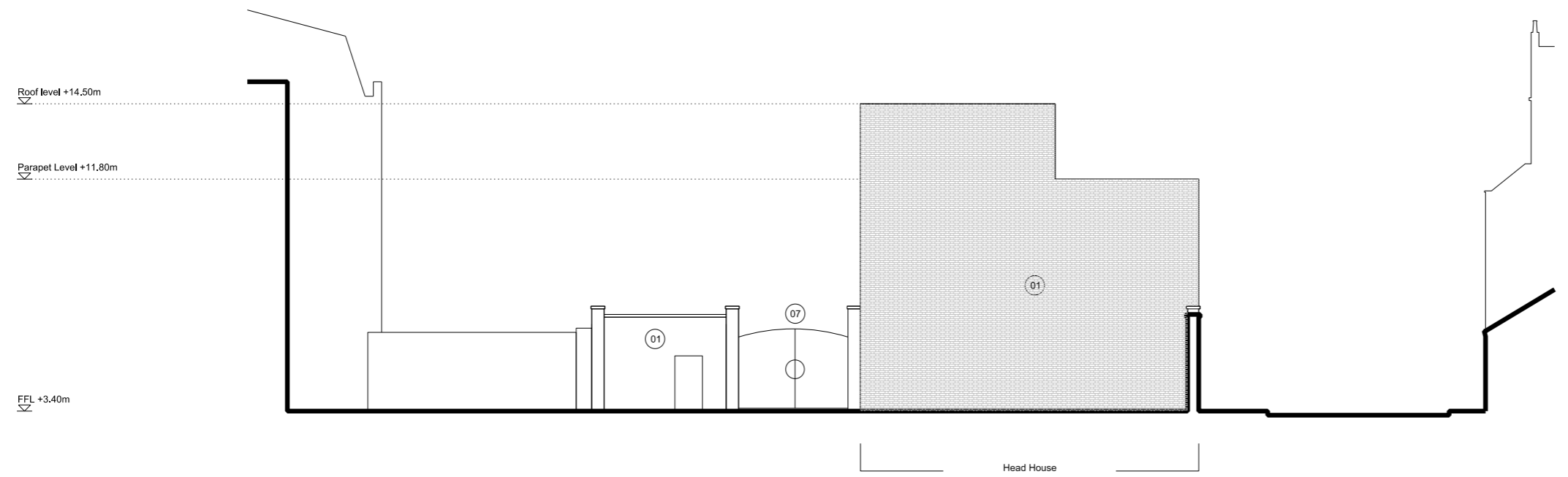
Submittal:
S4 FORMAL ISSUE TO CLIENT

Drawn by: KD Date: 04/03/13
 Checked by: KW Date: 04/03/13
 Approved by: KW Date: 04/03/13
 Drawing Scale: 1:100 @ A1 or 1:200 @ A3

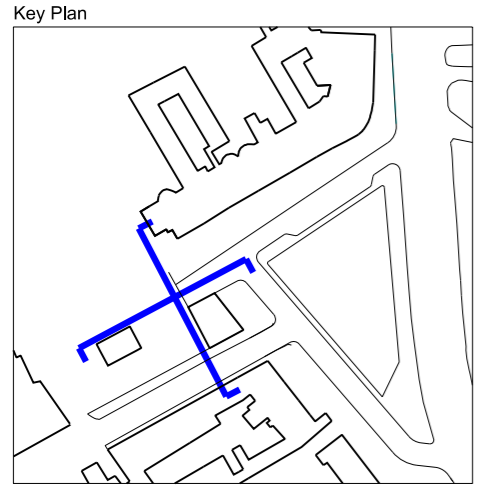
Drawing No.: **1453-KG-F000-E-02** Revision: **08**



NORTH ELEVATION



WEST ELEVATION

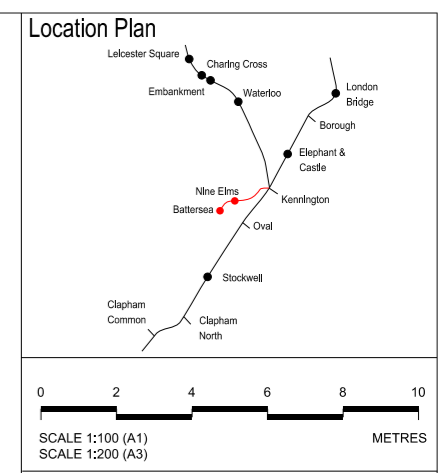


Key Plan

Materials Key

01	London stock brick
02	Protruding headers
03	Lattice brick
04	Metal Mesh
05	Louvres
06	Metal Door
07	Existing Gate to be Reinstated

PLANNING DIRECTION DRAWING NUMBER 67



This drawing is for approval save for internal layouts which are illustrative only.

Rev	By	Chkd	App	Date	Description
08	KD	KW	KW	25/03/13	Formal Issue
07	KD	KW	KW	18/03/13	Amendments to Elevation
06	KD	KW	KW	15/03/13	Amendments to Elevation
05	KD	KW	KW	13/03/13	Minor Amendments
04	KD	KW	KW	08/03/13	Planning Direction Drawing Number Amended
03	KD	KW	KW	07/03/13	Planning Direction Drawing Number Added
02	KD	KW	KW	04/03/13	Engineering Changes and Minor Amendments
01	KW	KW	KW	27/02/13	Engineering changes

Client
Transport for London

JOHN MCASLAN + PARTNERS
studiodareARCHITECTS
Buro Happold
Consulting Engineers

Halcrow Group Ltd,
A CH2M HILL COMPANY
Elms House, 43 Brook Green
Hammersmith, London W6 7EP
TEL: 020 3479 8000
FAX: 020 3479 8001
www.halcrow.com



Project:
**NORTHERN LINE EXTENSION
TO BATTERSEA
PLANNING DIRECTION DRAWINGS**

Drawing:
**KENNINGTON GREEN HEAD HOUSE
PROPOSED
NORTH AND WEST ELEVATIONS**

Submittal:
S4 FORMAL ISSUE TO CLIENT

Drawn by:	KD	Date:	04/03/13
Checked by:	KW	Date:	04/03/13
Approved by:	KW	Date:	04/03/13
Drawing Scale:	1:100 @ A1 or 1:200 @ A3		

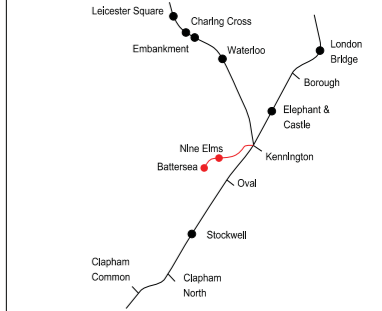
Drawing No.: **1453-KG-F000-E-03** Revision: **08**



Key

1. Outline of underground structure (in black dotted line)
2. Stone paved footpath
3. Stone paved carriage way (existing width and parking area maintained)
4. Stone paved raised crossing
5. Flat grassed area
6. Seating
7. Potential location for future artwork (design and exact location to be confirmed)
8. Retained existing tree (topographical survey required for identifying exact locations)
9. New tree
10. Proposed head house
11. Access to gin distillery
12. Retained existing light / CCTV column (topographical survey required for identifying exact locations)
13. Street light column
14. Litter bin
15. Telephone box
16. Gin distillery service yard
17. Cycle stands
18. Low post and chain fence
19. Pelican crossing

Location Plan



0 5 10 15 20 25 METRES

SCALE 1:250 (A1)
SCALE 1:500 (A3)

This drawing is illustrative only.



Rev	By	Chkd	App	Date	Description
08	YT	KW	HA	27/03/13	Formal Issue to client
07	YT	KW	HA	25/03/13	Formal Issue
06	YT	KW	HA	21/03/13	Minor amendments
05	YT	KW	HA	18/03/13	Minor amendments
04	YT	KW	HA	11/03/13	Planning direction drawing number amended
03	YT	KW	HA	07/03/13	Planning direction drawing number added
02	YT	KW	HA	04/03/13	Engineering changes and minor amendments
01	YT	KW	HA	27/02/13	Draft
00	YT	KW	HA	19/02/13	Draft

Client
Transport for London

JOHN MCASLAN + PARTNERS

studiodareARCHITECTS
Buro Happold
Consulting Engineers

Halcrow Group Ltd,
A CH2M HILL COMPANY
Elms House, 43 Brook Green
HammerSmith, London W6 7EF
TEL: 020 3479 8000
FAX: 020 3479 8001
www.halcrow.com



Project:
**NORTHERN LINE EXTENSION TO BATTERSEA
PLANNING DIRECTION DRAWINGS**

Drawing:
**KENNINGTON GREEN HEAD HOUSE PROPOSED
LANDSCAPE MASTERPLAN**

Suitability:
S4 FORMAL ISSUE TO CLIENT

Drawn by: WS Date: 19/02/13
Checked by: KW Date: 19/02/13
Approved by: HA Date: 19/02/13

Drawing Scale: 1:250 @ A1 or 1:500 @ A3
Drawing No.: 1453-KG-G710-P-00
Revision: 08

PLANNING DIRECTION DRAWING NUMBER 68



KEY

PAVING

- PT0 Existing surface to be made good as necessary
- PT1 Granite flags (pedestrian strength), 600mm (width) x 400, 600, 900mm (length), mix of mid and silver grey
- PT2 Granite setts (vehicular strength), 150mm (width) x 250 mm (length), mix of mid and silver grey
- PT3 Granite setts (lorry and large vehicular strength), 150mm (width) x 250 mm (length), mix of mid and silver grey

EDGING

- ET1 Granite road kerb, 300mm (width) x 900mm (length) , 200mm (depth).
- ET2 Granite feature kerb to grassed area, random (width) x 900mm (length), 200mm (depth)

FURNITURE

- F1 Tree pit grill and support frame to existing tree
- F2 Tree pit complete to new tree
(tree grill and support frame, irrigation / aeration inlet, underground guying, root director and root cells)
- F3 Granite monolith bench
- F4 Potential location for future artwork (design and exact location to be confirmed)
- F5 Underground guying for tree in soft landscaped area (requirement for root barrier / director to be confirmed)
- F6 Litter bin
- F7 Telephone box
- F8 Cycle stands
- F9 Low post and chain fence

SOFT LANDSCAPE

- T0 Retained existing tree (topographical survey required for identifying exact locations)
- T1 Platanus x hispanica
- T2 Betula pendula (multi stem)
- T3 Amelanchier lamarckii (multi stem)
- G1 Lawn

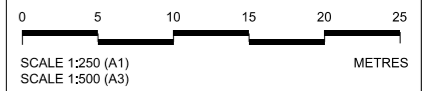
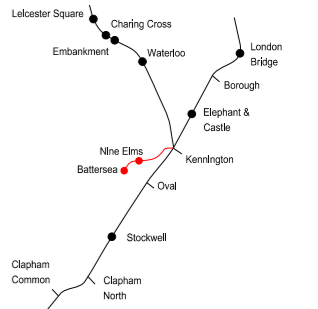
LIGHTING

- L0 Retained existing light / CCTV column
- L1 Street light column (topographical survey required for identifying exact locations)
- L2 Bench underside strip light
- L3 Tree uplight
- L4 Feature lighting for artwork

INFRASTRUCTURE

- Outline of underground structure

Location Plan



SCALE 1:250 (A1)
SCALE 1:500 (A3)

This drawing is illustrative only.



Rev	By	Chkd	App	Date	Description
08	YT	KW	HA	27/03/13	Formal issue to client
07	YT	KW	HA	25/03/13	Formal issue
06	YT	KW	HA	18/03/13	Minor amendments
05	YT	KW	HA	13/03/13	Minor amendments
04	YT	KW	HA	11/03/13	Planning direction drawing number amended
03	YT	KW	HA	07/03/13	Planning direction drawing number added
02	YT	KW	HA	04/03/13	Engineering changes and minor amendments
01	YT	KW	HA	27/02/13	Draft
00	YT	KW	HA	19/02/13	Draft

Client
Transport for London

JOHN MCASLAN + PARTNERS
studiodareARCHITECTS
Buro Happold
Consulting Engineers

Halcrow Group Ltd,
A CH2M HILL COMPANY
Elms House, 43 Brook Green
Hammersmith, London W6 7EP
TEL: 020 3479 8000
FAX: 020 3479 8001
www.halcrow.com



Project:
**NORTHERN LINE EXTENSION
TO BATTERSEA
PLANNING DIRECTION DRAWINGS**

Drawing:
**KENNINGTON GREEN HEAD HOUSE
PROPOSED
PUBLIC REALM
GENERAL ARRANGEMENT PLAN**

Submittal:
S4 FORMAL ISSUE TO CLIENT

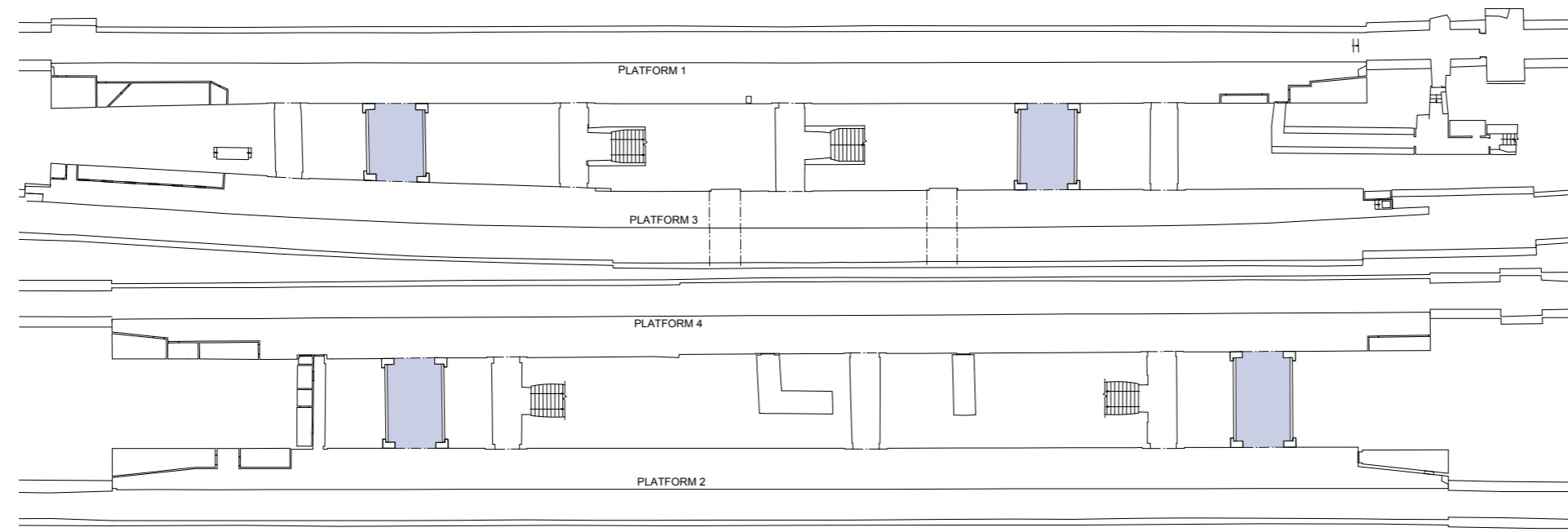
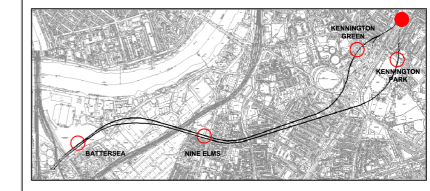
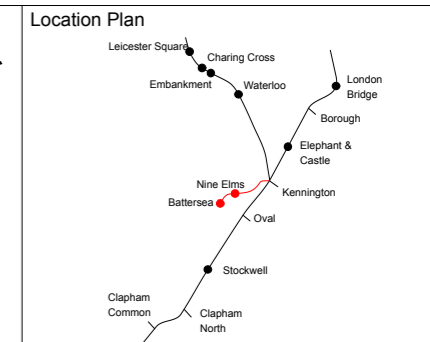
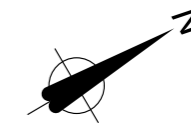
Drawn by: WS Date: 19/02/13
Checked by: KW Date: 19/02/13
Approved by: HA Date: 19/02/13
Drawing Scale: 1:250 @ A1 or 1:500 @ A3

Drawing No.: **1453-KG-G710-P-01** RevBor: **08**

PLANNING DIRECTION DRAWING NUMBER 69

Based on Ordnance Survey Digital Data with the permission of the controller of H.M.S.O. © Crown Copyright Reserved Licence No. nmo_03735001-17

Drawing file path & name
User and Plot Date



Canopy / Rooflight
Forecourt / Access
Tickethall / Entrance
Paid Concourse
Internal Accommodation
Ducts / Risers
Lift
Emergency Lift (plant replacement)
Escape Route

NOTE: FOR LOCATION SEE PLANNING DIRECTION DRAWING No. 7



This drawing is illustrative only.

Rev	By	Chkd	Apprvd	Date	Description
04	SM	FM	SL	25/03/13	Formal Issue
03	SM	FM	SL	20/03/13	General Update
02	SM	FM	SL	11/03/13	General Update
01	SM	FM	SL	28/02/13	First Drawn

Client

Transport for London



Halcrow Group Ltd.
A CH2M HILL COMPANY
Elms House, 43 Brook Green
Hammermith, London W6 7EF
TEL: 020 3479 8000
FAX: 020 3479 8001
www.halcrow.com



Project: **NORTHERN LINE EXTENSION TO BATTERSEA PLANNING DIRECTION DRAWINGS**

Drawing: **KENNINGTON STATION PLATFORM LEVEL**

Suitability: **S4 FORMAL ISSUE TO CLIENT**

Drawn by: SM Date: 04/03/13

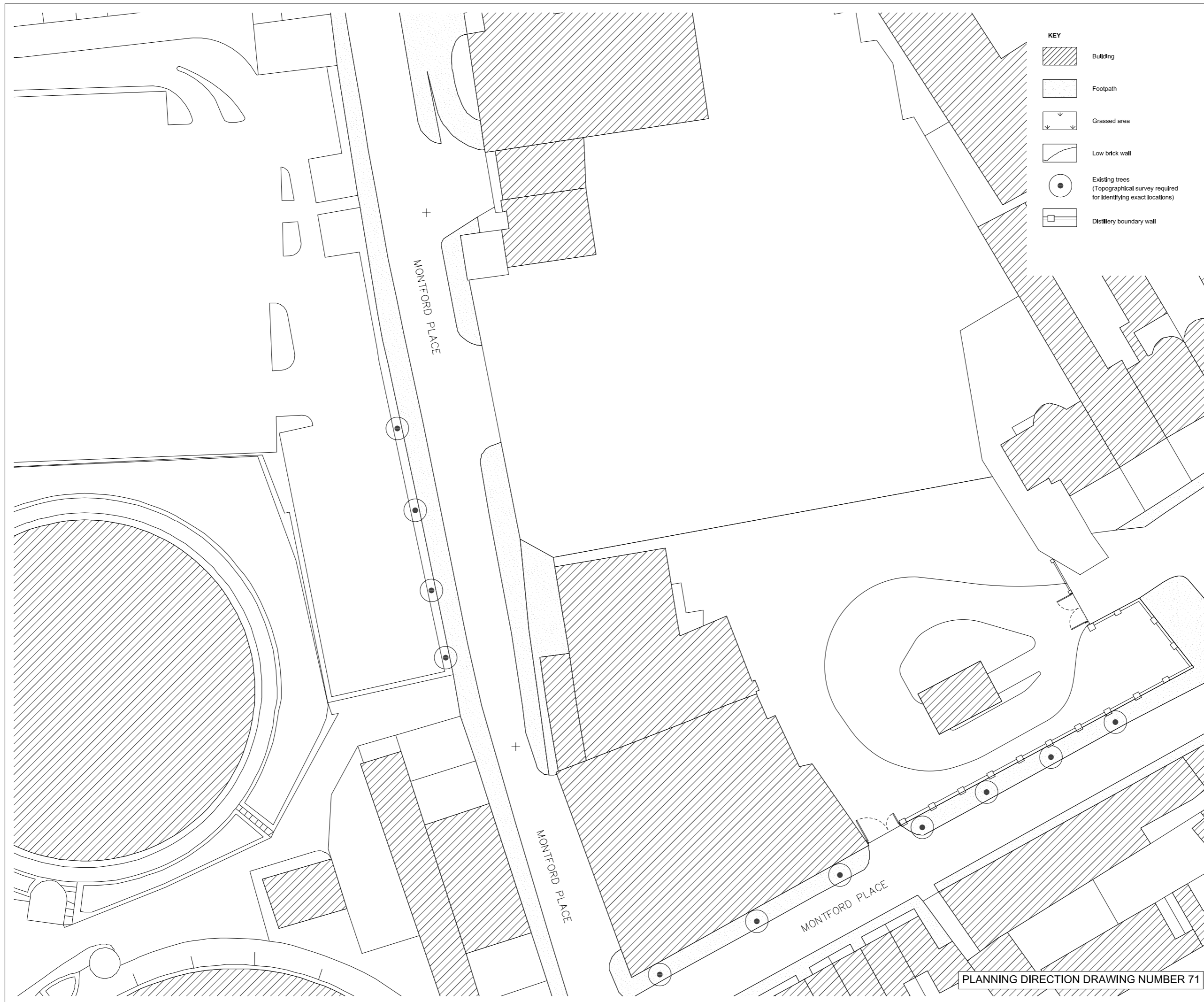
Checked by: FM Date: 04/03/13



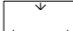
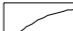

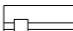
Approved by: SL Date: 04/03/13

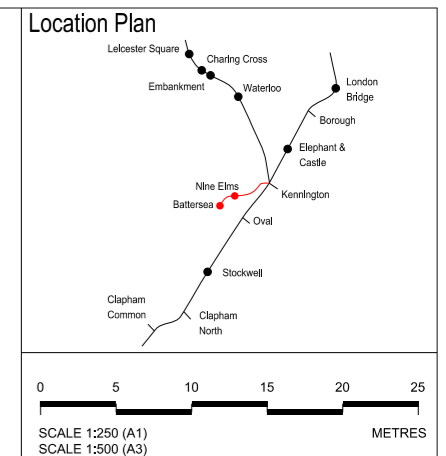
Drawing Scale: 1:250 @ A1 or 1:500 @ A3

Drawing No.: **GRNLEB-SDA-ST-XX-DR-45500** Revision: **04**

PLANNING DIRECTION DRAWING NUMBER 70



- KEY**
-  Building
 -  Footpath
 -  Grassed area
 -  Low brick wall
 -  Existing trees
(Topographical survey required for identifying exact locations)
 -  Distillery boundary wall



Rev	By	Chkd	App	Date	Description
04	KD	KW	KW	25/03/13	Formal issue
03	KD	KW	KW	18/03/13	Minor Amendments
02	KD	KW	KW	11/03/13	Planning Direction Drawing Number Amended
01	KD	KW	KW	07/03/13	Planning Direction Drawing Number Added

Client
Transport for London

JOHN MCASLAN + PARTNERS
studiodareARCHITECTS
Buro Happold
Consulting Engineers

Halcrow Group Ltd,
A CH2M HILL COMPANY
Elms House, 43 Brook Green
Hammersmith, London W6 7EP
TEL: 020 3479 8000
FAX: 020 3479 8001
www.halcrow.com

Project:
**NORTHERN LINE EXTENSION
TO BATTERSEA
PLANNING DIRECTION DRAWINGS**

Drawing:
**DISTILLERY WATER TANK
EXISTING
PLAN**

Submittal:
S4 FORMAL ISSUE TO CLIENT

Drawn by: KD Date: 130304

Checked by: KW Date: 130304

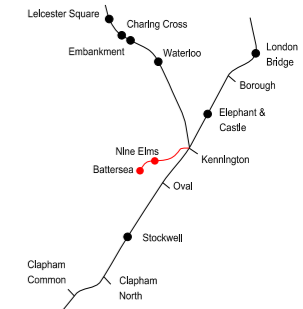
Approved by: KW Date: 130304

Drawing Scale: 1:250 @ A1 or 1:500 @ A3

Drawing No.: **1453-WT-F000-XP-00** Revisions: **04**

PLANNING DIRECTION DRAWING NUMBER 71

Location Plan



FFL +3.40m

WEST ELEVATION

PLANNING DIRECTION DRAWING NUMBER 72

This drawing is for approval save for internal layouts which are illustrative only.

Rev	By	Chkd	App	Date	Description
04	KD	KW	KW	25/03/13	Formal Issue
03	KD	KW	KW	18/03/13	Existing Gate Shown in Elevation
02	KD	KW	KW	11/03/13	Planning Direction Drawing Number Amended
01	KD	KW	KW	07/03/13	Planning Direction Drawing Number Added

Client
Transport for London

JOHN MCASLAN + PARTNERS
studiodareARCHITECTS
Buro Happold Consulting Engineers

Halcrow Group Ltd.
A CH2M HILL COMPANY
Elms House, 43 Brook Green
Hammersmith, London W6 7EP
TEL: 020 3479 8000
FAX: 020 3479 8001
www.halcrow.com



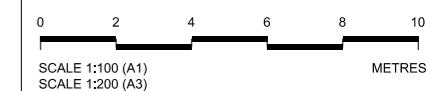
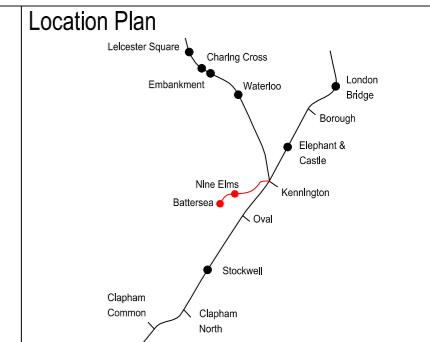
Project:
**NORTHERN LINE EXTENSION TO BATTERSEA
PLANNING DIRECTION DRAWINGS**

Drawing:
**DISTILLERY WATER TANK EXISTING
WEST ELEVATION**

Submittal:
S4 FORMAL ISSUE TO CLIENT

Drawn by: KD Date: 130304
Checked by: KW Date: 130304
Approved by: KW Date: 130304
Drawing Scale: 1:100 @ A1 or 1:200 @ A3

Drawing No.: **1453-WT-F000-XE-00** Revision: **04**



This drawing is for approval save for internal layouts which are illustrative only.

Rev	By	Chkd	App	Date	Description
03	KD	KW	KW	25/03/13	Formal Issue
02	KD	KW	KW	18/03/13	Labels added
01	KD	KW	KW	13/03/07	Planning Direction Drawing Number Added

Client
Transport for London

JOHN MCASLAN + PARTNERS
studiodareARCHITECTS
Buro Happold
Consulting Engineers

Halcrow Group Ltd,
A CH2M HILL COMPANY
Elms House, 43 Brook Green
Hammersmith, London W6 7EP
TEL: 020 3479 8000
FAX: 020 3479 8001
www.halcrow.com



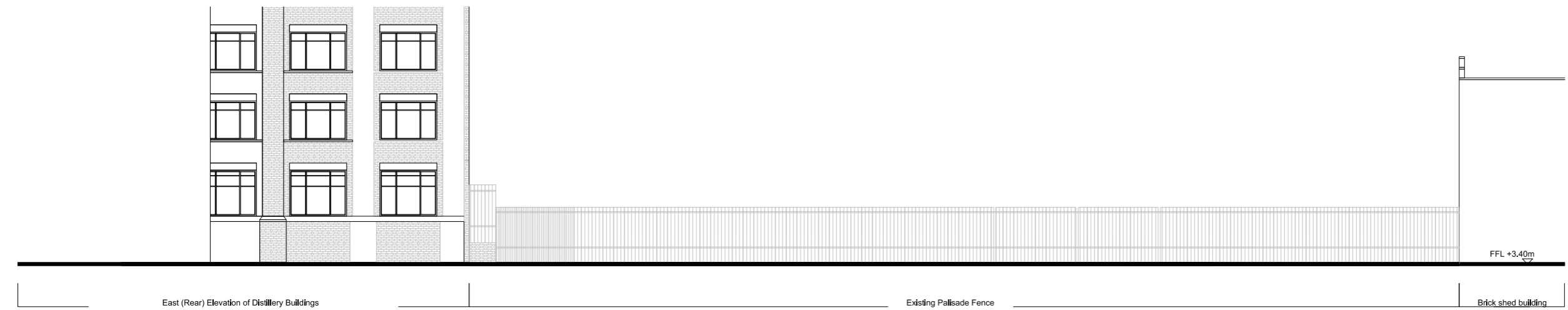
Project:
NORTHERN LINE EXTENSION TO BATTERSEA
PLANNING DIRECTION DRAWINGS

Drawing:
DISTILLERY WATER TANK EXISTING
NORTH, EAST AND SOUTH ELEVATIONS

Suitability:
S4 FORMAL ISSUE

Drawn by: KD Date: 130304
Checked by: KW Date: 130304
Approved by: KW Date: 130304
Drawing Scale: 1:100 @ A1 or 1:200 @ A3

Drawing No.: **1453-WT-F000-XE-01** Revision: **03**



East (Rear) Elevation of Distillery Buildings

Existing Palisade Fence

Brick shed building

EAST ELEVATION



MONTFORD PLACE

Existing palisade fence

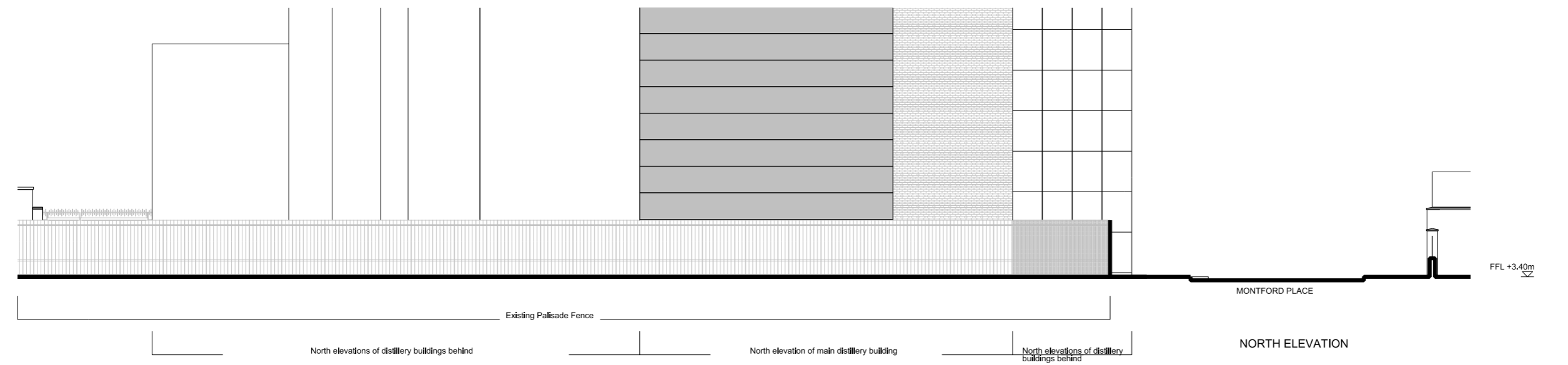
Substation in distance

Brick shed building in distance

Office building in far distance

SOUTH ELEVATION

FFL +3.40m



North elevations of distillery buildings behind

North elevation of main distillery building

North elevations of distillery buildings behind

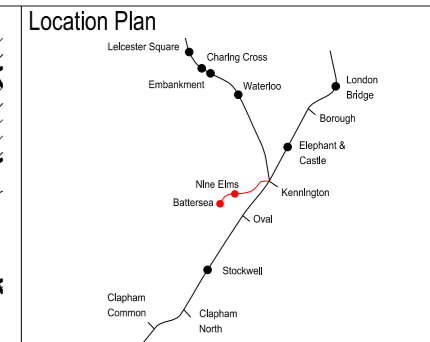
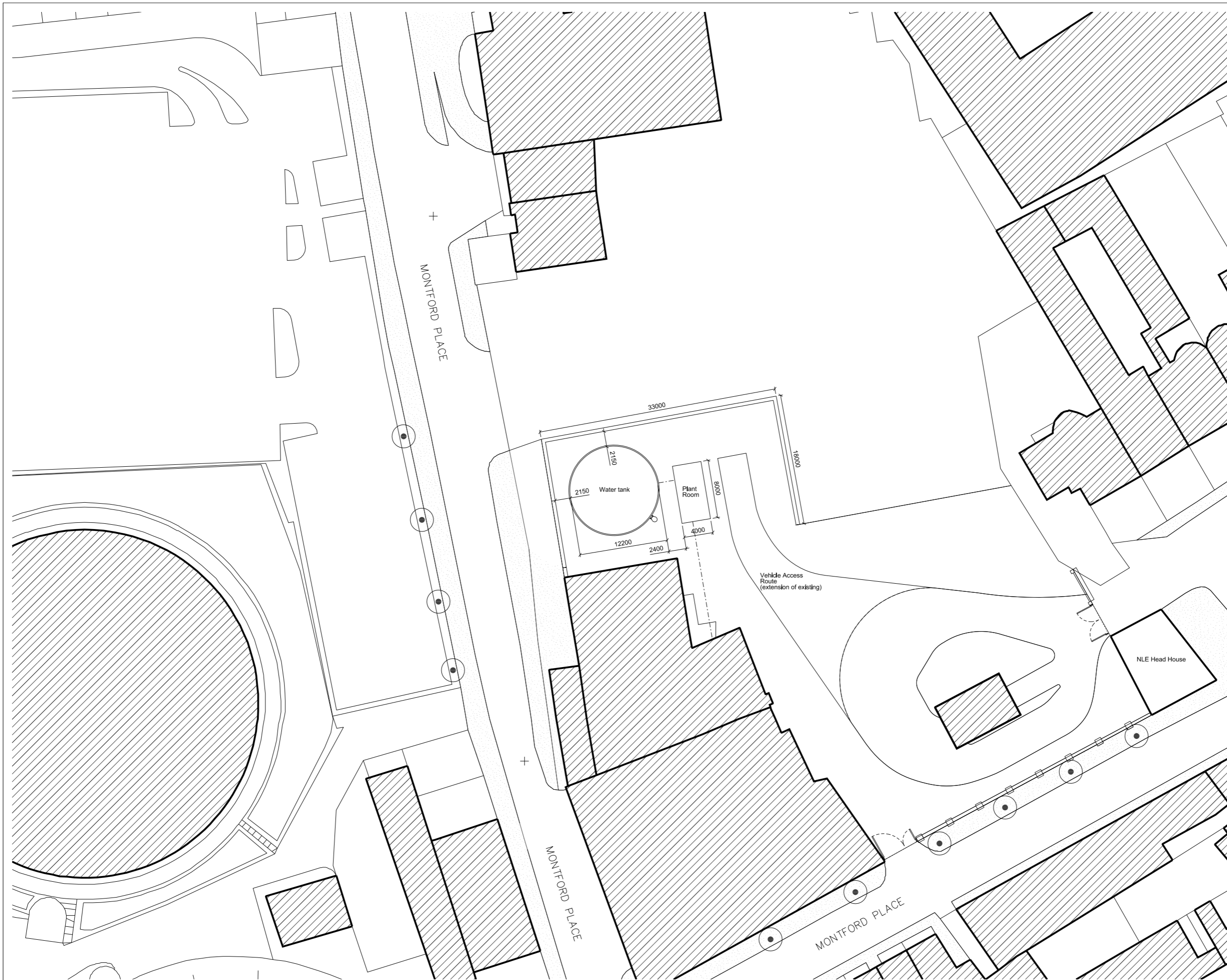
NORTH ELEVATION

MONTFORD PLACE

FFL +3.40m

Existing Palisade Fence

PLANNING DIRECTION DRAWING NUMBER 73



0 5 10 15 20 25
 SCALE 1:250 (A1)
 SCALE 1:500 (A3) METRES

This drawing is for approval save for internal layouts which are illustrative only.



Rev	By	Chkd	App	Date	Description
07	KD	KW	KW	25/03/13	Formal issue
06	LB	KW	KW	21/03/13	Minor amendments
05	KD	KW	KW	18/03/13	Minor amendments
04	KD	KW	KW	12/03/13	Minor amendments
03	KD	KW	KW	11/03/13	Planning Direction Drawing Number Amended
02	KD	KW	KW	07/03/13	Planning Direction Drawing Number Added
01	KD	KW	KW	04/03/13	Engineering Changes and Minor Amendments

Client

Transport for London

JOHN MCASLAN + PARTNERS

studiodareARCHITECTS
 Buro Happold
 Consulting Engineers

Halcrow Group Ltd,
 A CH2M HILL COMPANY
 Elms House, 43 Brook Green
 Hammersmith, London W6 7EP
 TEL: 020 3479 8000
 FAX: 020 3479 8001
 www.halcrow.com



Project: **NORTHERN LINE EXTENSION TO BATTERSEA PLANNING DIRECTION DRAWINGS**

Drawing: **DISTILLERY WATER TANK PROPOSED PLAN**

Suitability: **S4 FORMAL ISSUE TO CLIENT**

Drawn by: KD Date: 130304

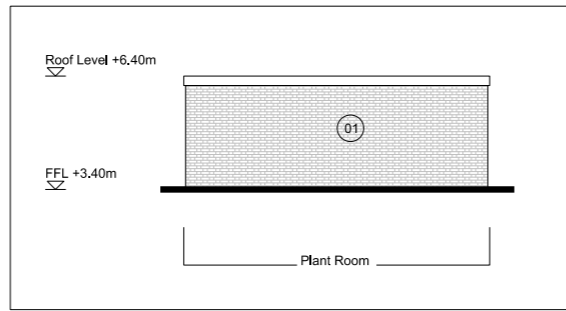
Checked by: KW Date: 130304

Approved by: KW Date: 130304

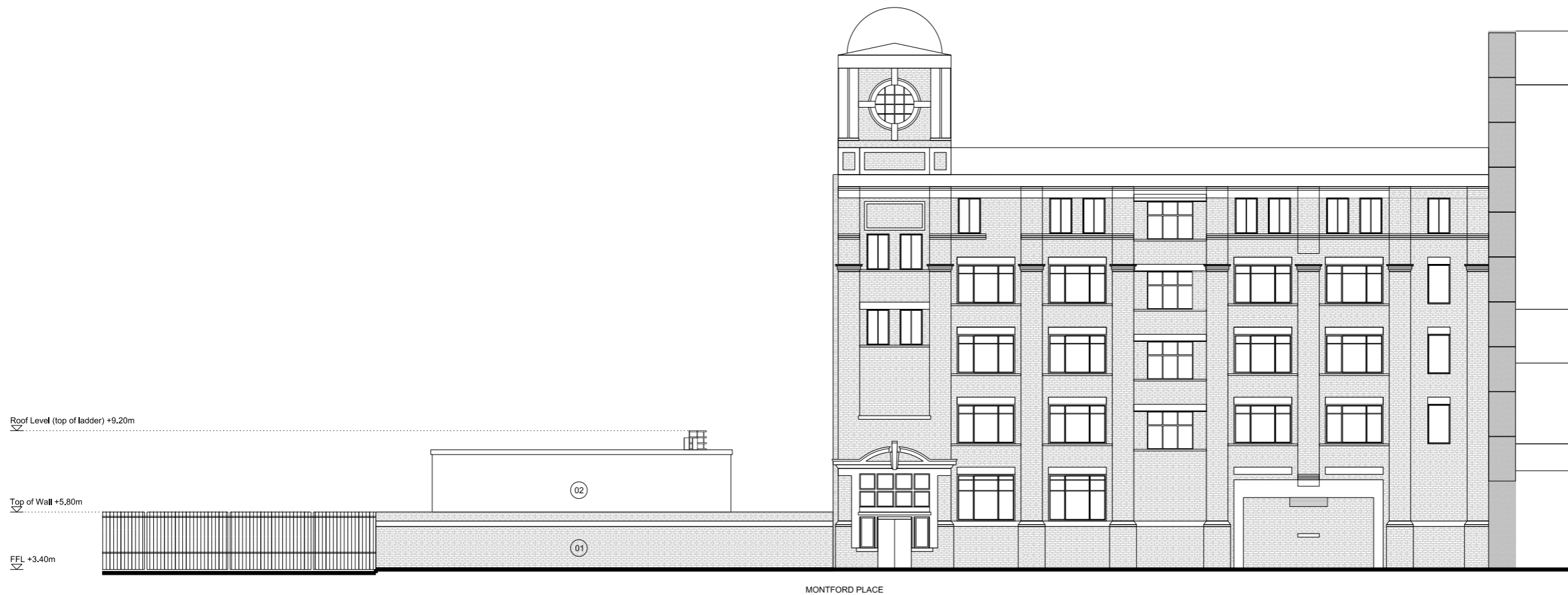
Drawing Scale: 1:250 @ A1 or 1:500 @ A3

Drawing No.: 1453-WT-F000-P-00 Revision: 07

PLANNING DIRECTION DRAWING NUMBER 74



WEST ELEVATION OF PLANT ROOM
(OBSCURED BEHIND WATER TANK IN MAIN ELEVATION)



MONTFORD PLACE

WEST ELEVATION

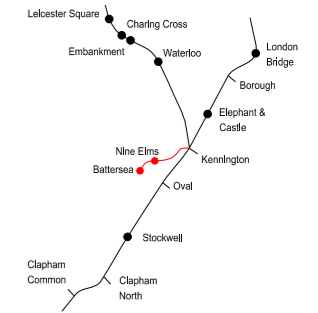
Water Tank

Materials Key

- 01 Red brick to match distillery
- 02 Prefabricated metal water tank
- 03 Metal Door

PLANNING DIRECTION DRAWING NUMBER 75

Location Plan



SCALE 1:100 (A1)
SCALE 1:200 (A3) METRES

This drawing is for approval save for internal layouts which are illustrative only.

Rev	By	Chkd	App	Date	Description
06	KD	KW	KW	130325	Formal Issue
05	KD	KW	KW	130318	Minor amendments
04	KD	KW	KW	130312	Minor amendments
03	KD	KW	KW	130311	planning direction drawing number amended
02	KD	KW	KW	130307	planning direction drawing number added
01	KD	KW	KW	130304	Engineering Changes and Minor Amendments

Client

Transport for London

JOHN MCASLAN + PARTNERS

studiodareARCHITECTS



Halcrow Group Ltd,
A CH2M HILL COMPANY
Elms House, 43 Brook Green
Hammersmith, London W6 7EP
TEL: 020 3479 8000
FAX: 020 3479 8001
www.halcrow.com

Halcrow

Project:

NORTHERN LINE EXTENSION
TO BATTERSEA
PLANNING DIRECTION DRAWINGS

Drawing:

DISTILLERY WATER TANK
PROPOSED
WEST ELEVATION

Submittal:

S4 FORMAL ISSUE TO CLIENT

Drawn by: KD Date: 130304

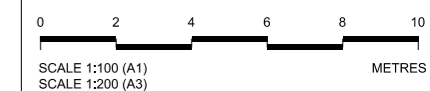
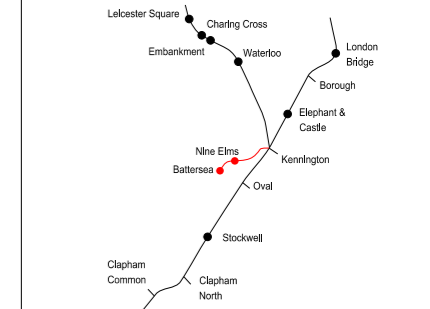
Checked by: KW Date: 130304

Approved by: KW Date: 130304

Drawing Scale: 1:100 @ A1 or 1:200 @ A3

Drawing No.: 1453-WT-F000-E-00 Revision: 06

Location Plan



This drawing is for approval save for internal layouts which are illustrative only.

Rev	By	Chkd	App	Date	Description
07	KD	KW	KW	130326	Amendment to Context, Formal Re-issue
06	KD	KW	KW	130325	Formal Issue
05	KD	KW	KW	130318	Labels added
04	KD	KW	KW	130312	Minor Amendments
03	KD	KW	KW	130311	Planning Direction Drawing Number Amended
02	KD	KW	KW	130307	Planning Direction Drawing Number Added
01	KD	KW	KW	130304	Engineering Changes and Minor Amendments

Client
Transport for London

JOHN MCASLAN + PARTNERS
studiodareARCHITECTS
Buro Happold
Consulting Engineers

Halcrow Group Ltd,
A CH2M HILL COMPANY
Elms House, 43 Brook Green
Hammersmith, London W6 7EP
TEL: 020 3479 8000
FAX: 020 3479 8001
www.halcrow.com



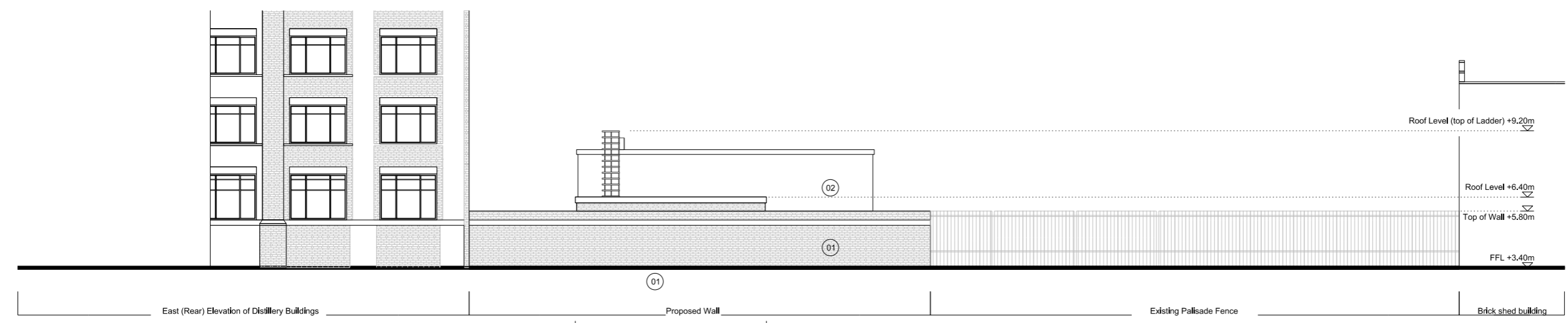
Project:
**NORTHERN LINE EXTENSION
TO BATTERSEA
PLANNING DIRECTION DRAWINGS**

Drawing:
**DISTILLERY WATER TANK
PROPOSED
NORTH, EAST AND SOUTH ELEVATIONS**

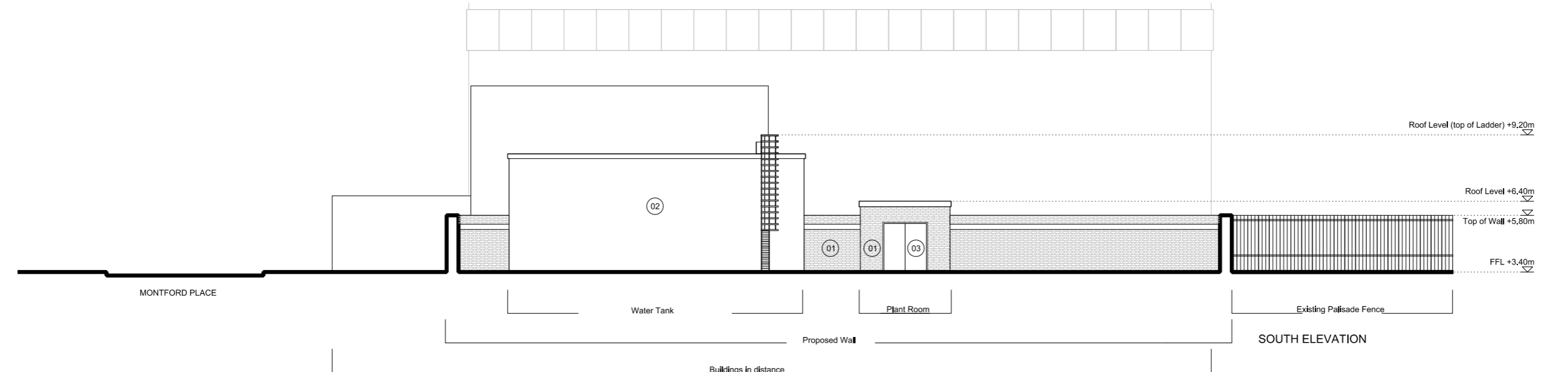
Submittal:
S4 FORMAL ISSUE TO CLIENT

Drawn by: KD Date: 130304
Checked by: KW Date: 130304
Approved by: KW Date: 130304
Drawing Scale: 1:100 @ A1 or 1:200 @ A3

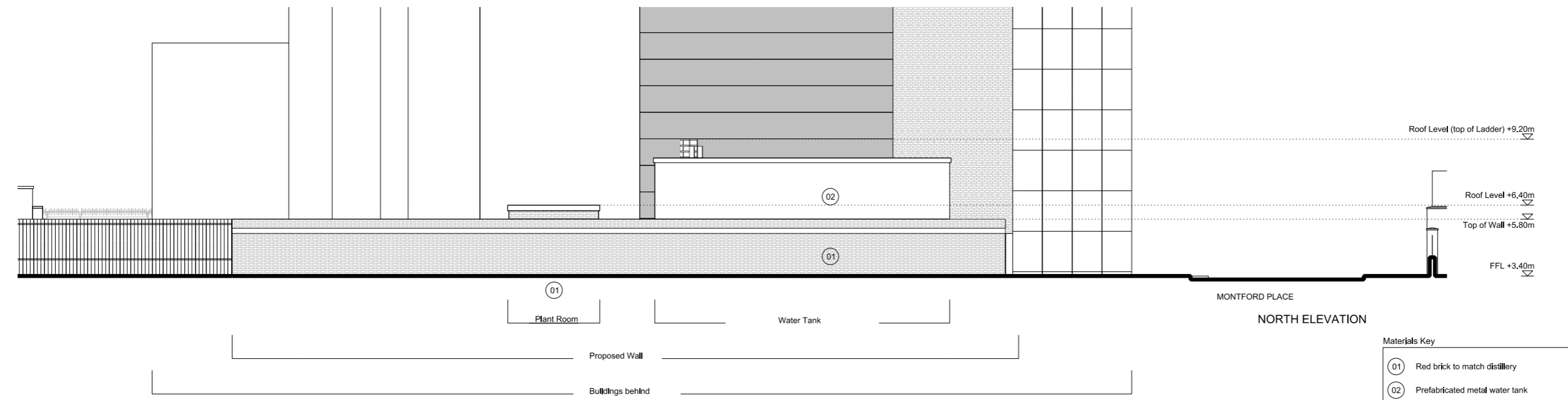
Drawing No.: **1453-WT-F000-E-01** Revision: **07**



EAST ELEVATION



SOUTH ELEVATION

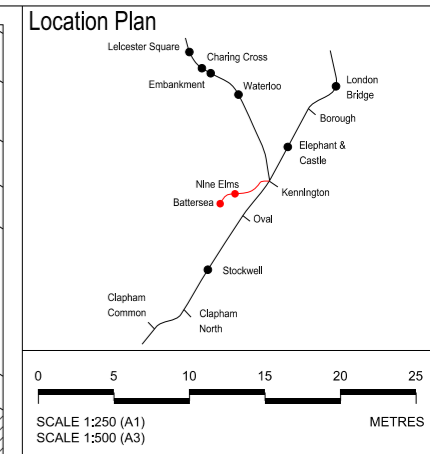


NORTH ELEVATION

Materials Key

01	Red brick to match distillery
02	Prefabricated metal water tank
03	Metal door

PLANNING DIRECTION DRAWING NUMBER 76



TO BE DEMOLISHED



Rev	By	Chkd	App	Date	Description
03	KD	KW	HA	27/03/13	Formal issue to client
02	KD	KW	HA	25/03/13	Formal issue
01	KD	KW	HA	22/03/13	Minor amendments
00	KD	KW	HA	18/03/13	Draft

Client
Transport for London

JOHN MCASLAN + PARTNERS
studiodareARCHITECTS
Buro Happold
Consulting Engineers

Halcrow Group Ltd.
A CH2M HILL COMPANY
Elms House, 43 Brook Green
Hammersmith, London W6 7EP
TEL: 020 3479 8000
FAX: 020 3479 8001
www.halcrow.com



Project:
**NORTHERN LINE EXTENSION
TO BATTERSEA
PLANNING DIRECTION DRAWINGS**

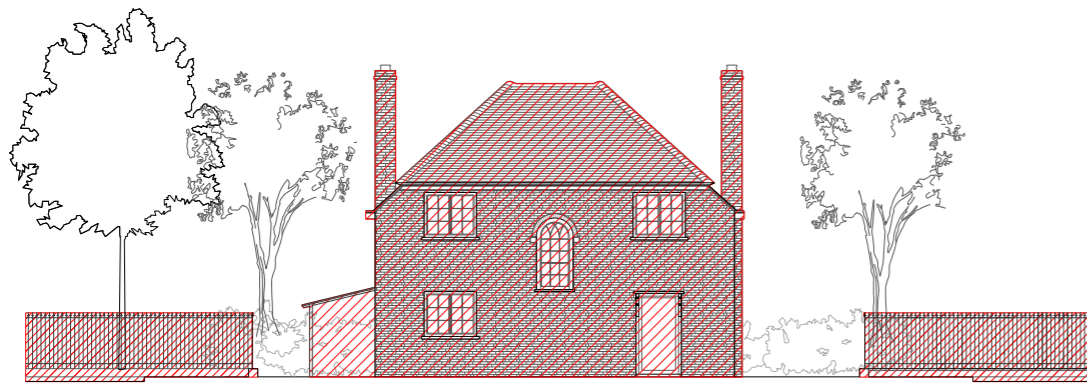
Drawing:
**KENNINGTON PARK HEAD HOUSE
& COMMUNITY CENTRE
DEMOLITION SITE PLAN**

Submittal:
S4 FORMAL ISSUE TO CLIENT

Drawn by: KD Date: 19/02/13
Checked by: KW Date: 19/02/13
Approved by: HA Date: 19/02/13
Drawing Scale: 1:250 @ A1 or 1:500 @ A3

Drawing No.: 1453-KP-G710-XP-01 RevBor: 03

CONSERVATION AREA CONSENT DRAWING NUMBER 01



EAST ELEVATION

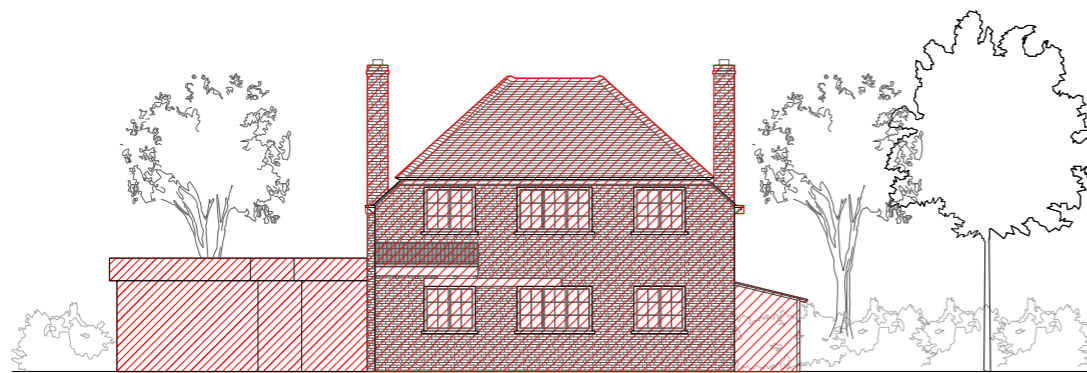
Lodge



NORTH ELEVATION

Lodge

Bee Keeping Centre



WEST ELEVATION

Bee Keeping Centre

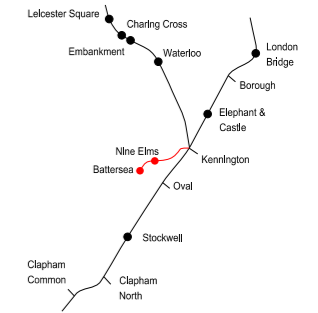
Lodge



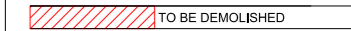
SOUTH ELEVATION

Lodge

Location Plan



SCALE 1:100 (A1)
SCALE 1:200 (A3)



Rev	By	Chkd	App	Date	Description
02	KD	KW	KW	25/03/13	Formal Issue
01	LB	KW	KW	130318	Annotation Amendment
00	KD	KW	KW	130318	Draft

Client
Transport for London

JOHN MCASLAN + PARTNERS
studiodareARCHITECTS
Buro Happold
Consulting Engineers

Halcrow Group Ltd,
A CH2M HILL COMPANY
Elms House, 43 Brook Green
Hammersmith, London W6 7EP
TEL: 020 3479 8000
FAX: 020 3479 8001
www.halcrow.com



Project:
**NORTHERN LINE EXTENSION
TO BATTERSEA
PLANNING DIRECTION DRAWINGS**

Drawing:
**KENNINGTON PARK HEAD HOUSE
& COMMUNITY CENTRE
EXISTING LODGE
SHOWING DEMOLITION**

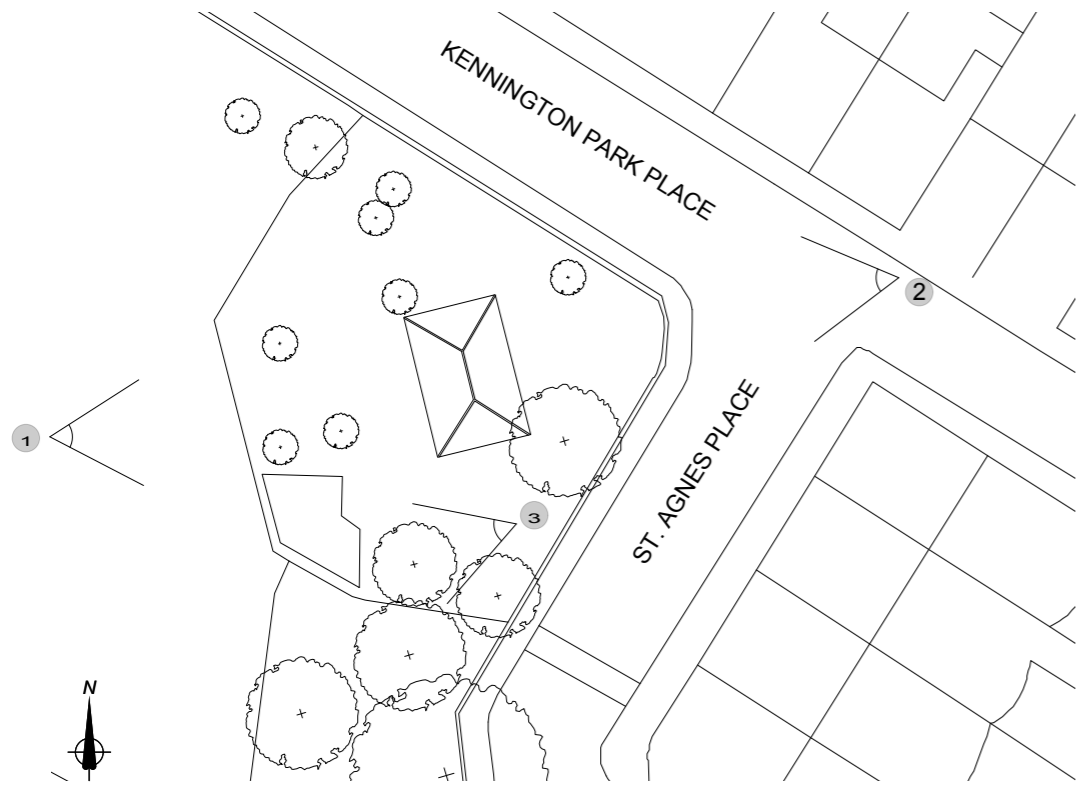
Submittal:
S4 FORMAL ISSUE TO CLIENT

Drawn by: RR Date: 08/03/13
Checked by: KW Date: 08/03/13
Approved by: HA Date: 08/03/13
Drawing Scale: 1:100 @ A1 or 1:200 @ A3

Drawing No.:
1453-KP-F000-XE-02

Revision:
02

CONSERVATION AREA CONSENT DRAWING NUMBER 02



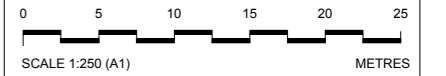
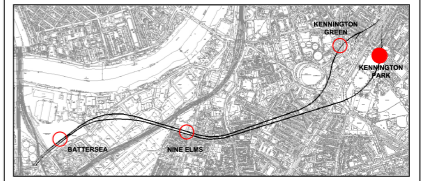
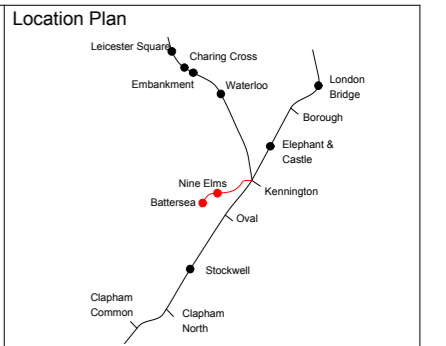
View 1



View 2



View 3



Rev	By	Chkd	Apprvd	Date	Description
04	SM	FM	SL	25/03/13	Formal Issue
03	SM	FM	SL	20/03/13	General Update
02	SM	FM	SL	11/03/13	General Update
01	SM	FM	SL	04/03/13	First Drawn

Client

Transport for London



Halcrow Group Ltd.
A CH2M HILL COMPANY
Elms House, 43 Brook Green
Hammersmith, London W6 7EF
TEL: 020 3478 8000
FAX: 020 3478 8001
www.halcrow.com



Project: **NORTHERN LINE EXTENSION TO BATTERSEA CONSERVATION AREA CONSENT**

Drawing: **KENNINGTON PARK**

PHOTOGRAPHS OF EXISTING BUILDINGS

Suitability: **S4 FORMAL ISSUE TO CLIENT**

Drawn by: SM Date: 04/03/13

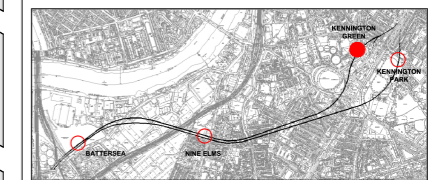
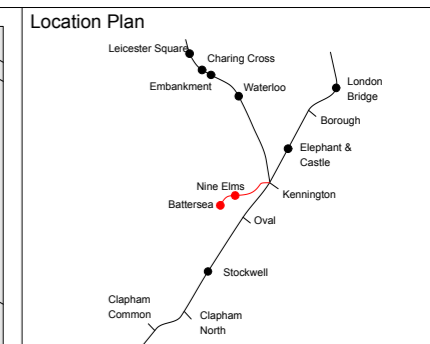
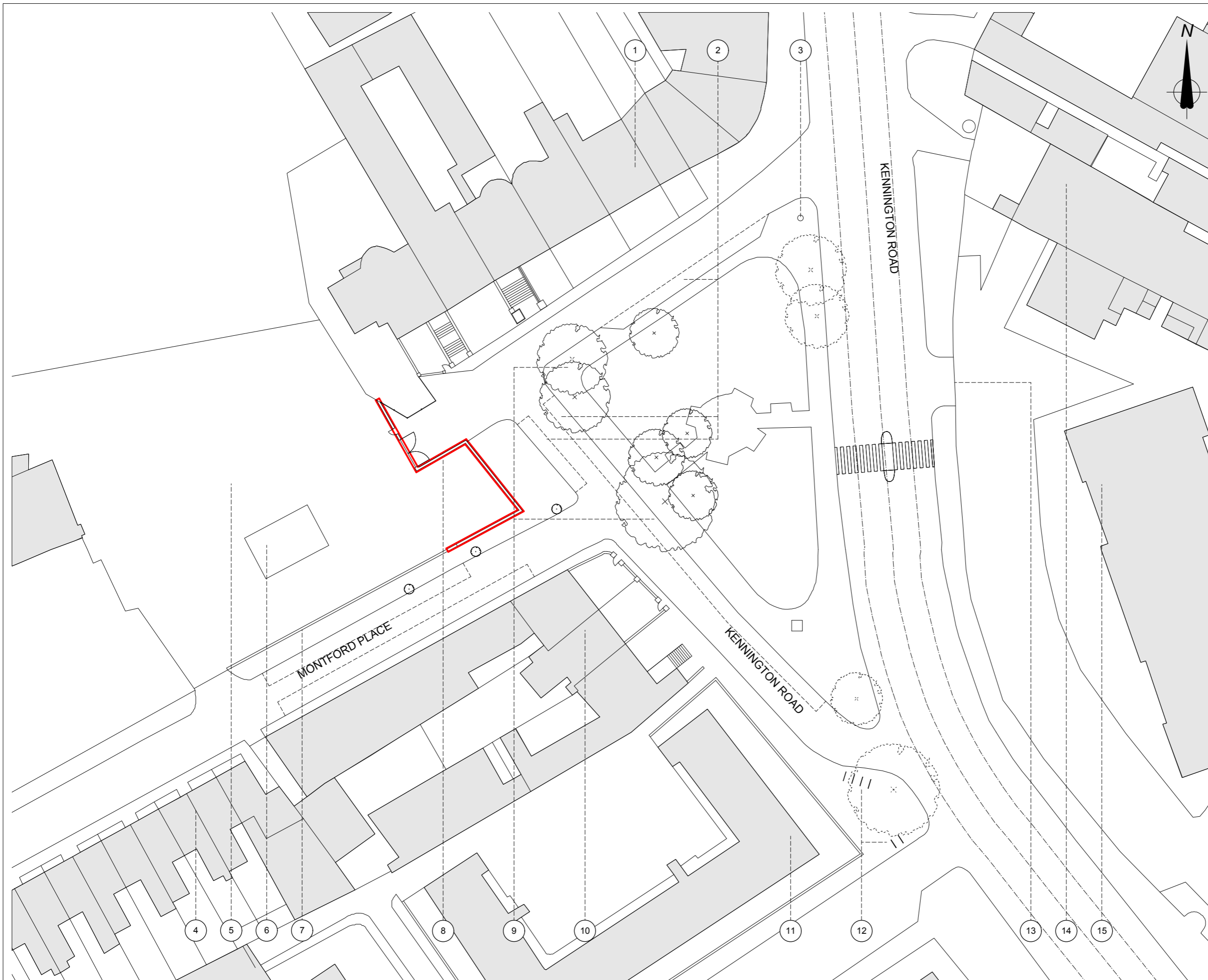
Checked by: SM Date: 04/03/13

Approved by: SL Date: 04/03/13

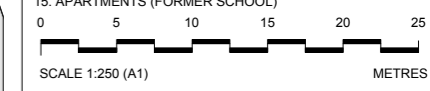
Drawing Scale: 1:250 @ A1 or 1:500 @ A3

Drawing No: **GRNLEB-SDA-TU-XX-DR-ARC-43515** Revision: **04**

CONSERVATION AREA CONSENT DRAWING NUMBER 03



1. RESIDENTIAL/COMMERCIAL
2. PARKING
3. POST BOX
4. 3 STOREY RESIDENTIAL TERRACE
5. BEEFEATER DISTILLERY
6. FUEL TANK
7. APPROX 3.5M HIGH BRICK WALL TO DISTILLERY
8. EXISTING BRICK WALL AND DISTILLERY GATE TO BE DEMOLISHED AS PART OF PROPOSED HEADHOUSE CONSTRUCTION (HIGHLIGHTED IN RED).
9. EXISTING TREES
10. 4-5 STOREY RESIDENTIAL TERRACE
11. 5 STOREY RESIDENTIAL APARTMENTS
12. CYCLE PARKING
13. CONTROLLED ENTRANCE GATE TO HOUSING
14. COMMERCIAL
15. APARTMENTS (FORMER SCHOOL)



This drawing is for approval save for internal layouts which are illustrative only.

Rev	By	Chkd	Apprvd	Date	Description
04	SM	FM	SL	25/03/13	Formal Issue
03	SM	FM	SL	20/03/13	General Update
02	SM	FM	SL	11/03/13	General Update
01	SM	FM	SL	04/03/13	First Drawn

Client
Transport for London

studiodareARCHITECTS
Buro Happold
Consulting Engineers

Halcrow Group Ltd.
A CH2M HILL COMPANY
Elms House, 43 Brook Green
HammerSmith, London W6 7EF
TEL: 020 3479 8000
FAX: 020 3479 8001
www.halcrow.com

Project:
**NORTHERN LINE EXTENSION
TO BATTERSEA
CONSERVATION AREA CONSENT**

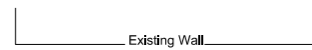
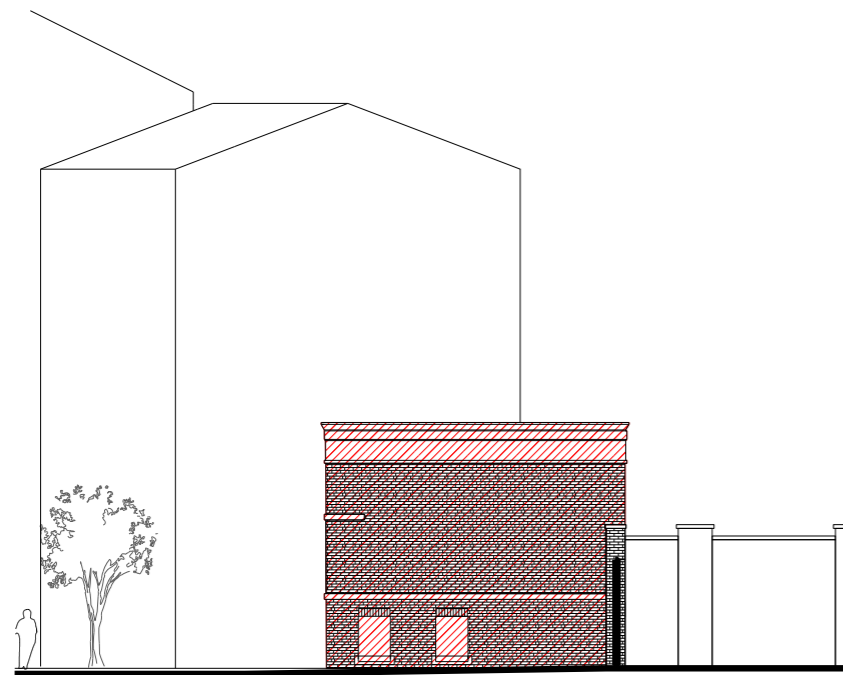
Drawing:
**KENNINGTON GREEN
EXISTING
SITE PLAN
SHOWING DEMOLITION**

Suitability:
S4 WORK IN PROGRESS

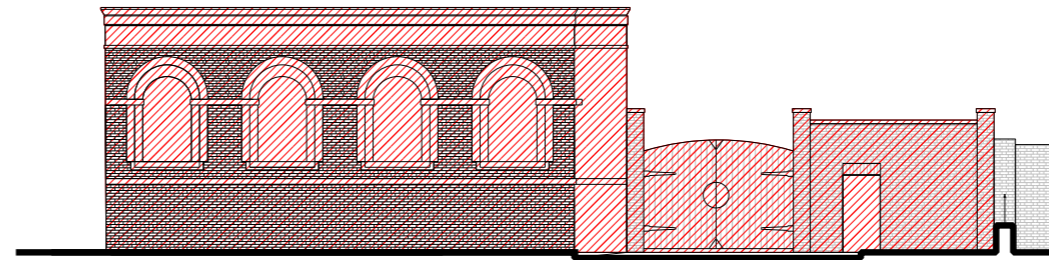
Drawn by: SM Date: 04/03/13
Checked by: FM Date: 04/03/13
Approved by: SL Date: 04/03/13
Drawing Scale: 1:250 @ A1 or 1:500 @ A3

Drawing No.: GRNLEB-SDA-TU-XX-DR-ARC-44500
Revision: 04

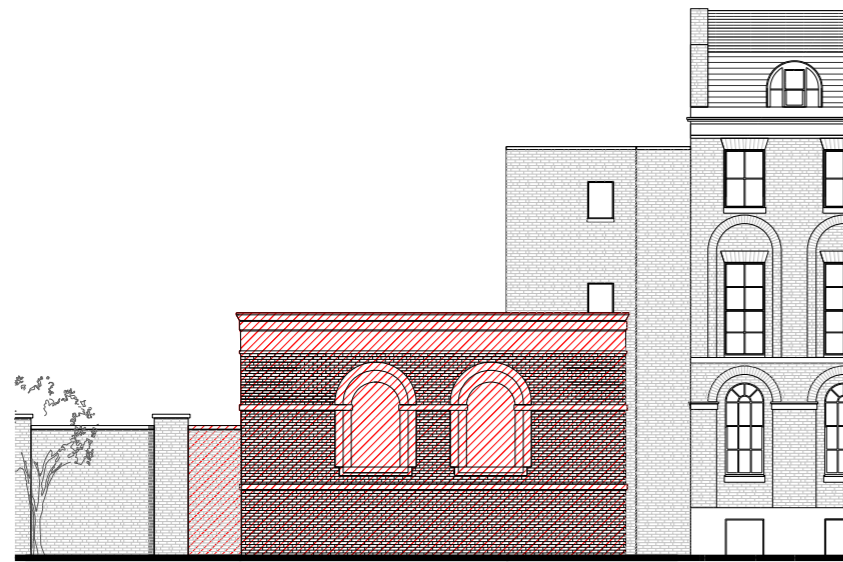
CONSERVATION AREA CONSENT DRAWING NUMBER 04



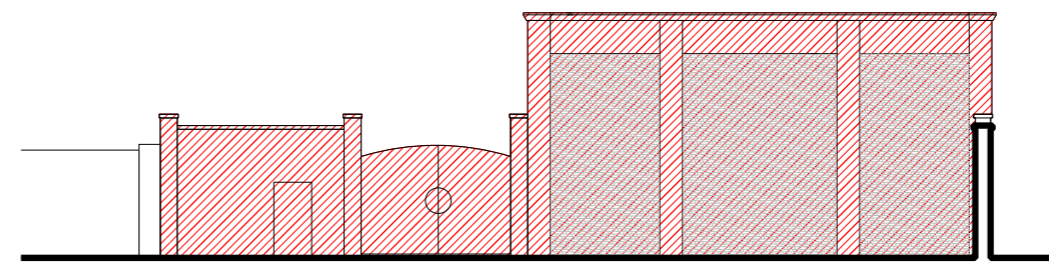
NORTH ELEVATION



EAST ELEVATION



SOUTH ELEVATION

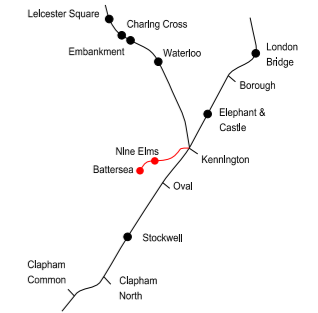


WEST ELEVATION

Note: Existing gate to be demolished and reinstated following proposed works

CONSERVATION AREA CONSENT DRAWING NUMBER 05

Location Plan



0 2 4 6 8 10 METRES
 SCALE 1:100 (A1)
 SCALE 1:200 (A3)

TO BE DEMOLISHED

Rev	By	Chkd	App	Date	Description
02	KD	KW	KW	25/03/13	Formal Issue
01	LB	KW	KW	18/03/13	Annotation amendment
00	KD	KW	KW	13/03/18	Draft

Client

Transport for London

JOHN MCASLAN + PARTNERS

studiodareARCHITECTS



Halcrow Group Ltd,
 A CH2M HILL COMPANY
 Elms House, 43 Brook Green
 Hammersmith, London W6 7EP
 TEL: 020 3479 8000
 FAX: 020 3479 8001
 www.halcrow.com



Project: NORTHERN LINE EXTENSION TO BATTERSEA
 PLANNING DIRECTION DRAWINGS

Drawing: KENNINGTON GREEN HEAD HOUSE
 EXISTING ELEVATION
 SHOWING DEMOLITION

Submittal: S4 FORMAL ISSUE TO CLIENT

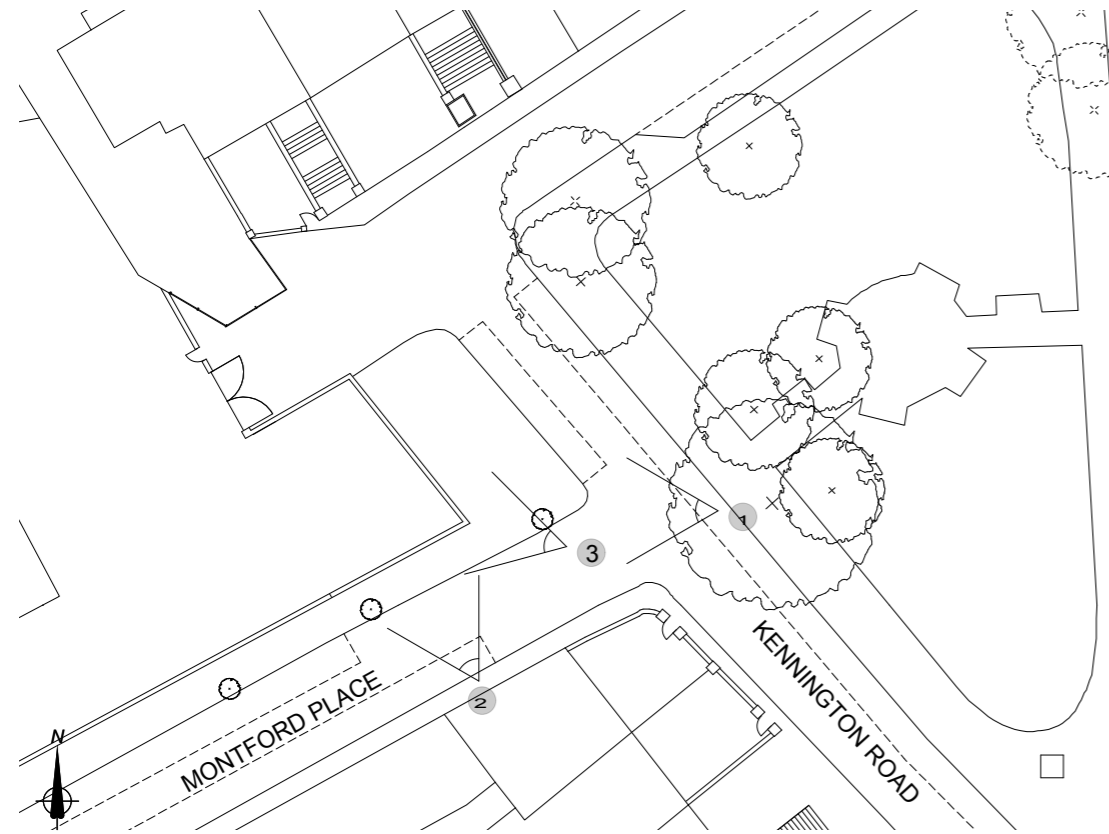
Drawn by: KD Date: 08/03/13

Checked by: KW Date: 08/03/13

Approved by: KW Date: 08/03/13

Drawing Scale: 1:100 @ A1 or 1:200 @ A3

Drawing No.: 1453-KG-F000-XE-02 Revision: 02



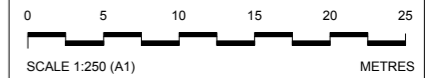
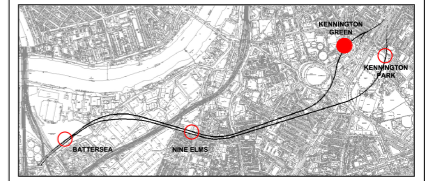
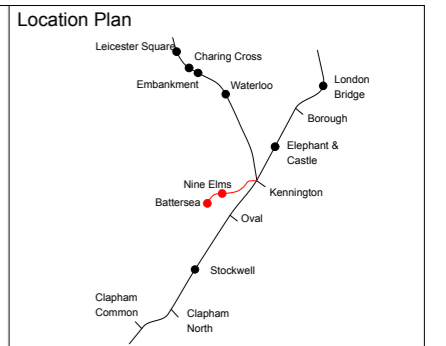
View 1



View 2



View 3



Rev	By	Chkd	Apprvd	Date	Description
04	NV	FM	SL	25/03/13	Formal Issue
03	SM	FM	SL	20/03/13	General Update
02	SM	FM	SL	11/03/13	General Update
01	SM	FM	SL	04/03/13	First Drawn

Client

Transport for London



Halcrow Group Ltd.
A CH2M HILL COMPANY
Elms House, 43 Brook Green
Hammermith, London W6 7EP
TEL: 020 3479 8000
FAX: 020 3479 8001
www.halcrow.com



Project: **NORTHERN LINE EXTENSION
TO BATTERSEA
CONSERVATION AREA CONSENT**

Drawing: **KENNINGTON GREEN
PHOTOGRAPHS OF
EXISTING BUILDINGS**

Suitability: **S4 FORMAL ISSUE TO CLIENT**

Drawn by: NV Date: 04/03/13

Checked by: FM Date: 04/03/13

Approved by: SL Date: 04/03/13

Drawing Scale: 1:250 @ A1 or 1:500 @ A3

Drawing No: **GRNLEB-SDA-TU-XX-DR-ARC-44515** Revision: **04**

CONSERVATION AREA CONSENT DRAWING NUMBER 06



Buro Happold

CORDEROY

Halcrow

JOHN McASLAN + PARTNERS



studiodareARCHITECTS

URS

