

Northern Line Extension

PROGRESS UPDATE

September 2020

NLE Kennington Park

Thank you for your patience whilst we continue with the Northern Line Extension (NLE) works near you. We would like to update you on where we are and what is planned over the coming months.

What has been completed?

The brickwork façade to the headhouse is progressing. We have now reached the first floor level on all sides of the building (see fig.1 below) and the waterproofing membrane has been completed to make the building fully watertight.

Works continue at pace below ground with the installation of mechanical and electrical (M&E) equipment such as lights, fans, fire alarms all progressing well. Doors to the various different plant rooms are being installed and the large fans that will ventilate the tunnels have been lifted into position. See fig.2 below.



Fig.1. The brickwork around the head house



Fig.2 Installation of ventilation fans at the NLE Kennington Park site

What is planned?

Hard landscaping within the site confines will begin. This will involve breaking and removal of the concrete which is currently forming the surface of the site compound. These works will commence around the headhouse section of the site. Notification, including timescale and duration, will be issued prior to the start of breaking works.

A full schedule of landscaping work to take place outside the hoarding will also be issued later in October.

The brickwork façade of the building will be nearing completion by October and the bronze grilles to the large openings in the walls will be installed.

In the basement, progress will continue below ground as the team works to install the mechanical equipment and weave the electrical equipment through the intricate maze of steel containments and trays. See fig. 3 below. Finishes to rooms will continue with flooring and painting.

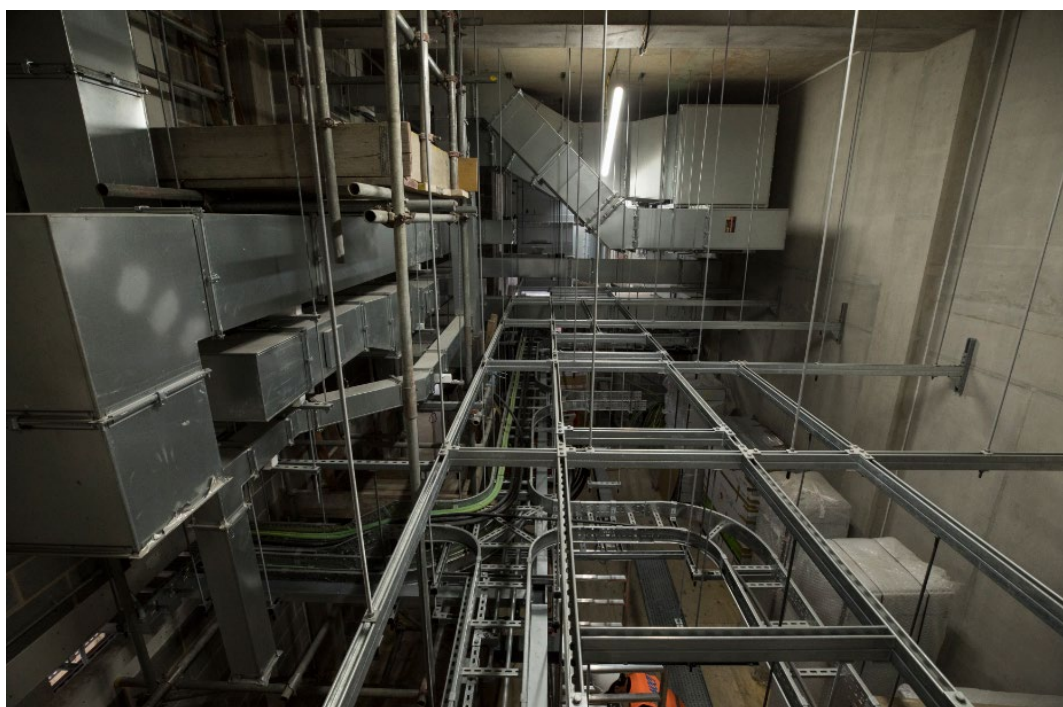


Fig 3. Inside the shaft - Containments to house mechanical and electrical equipment

In October we will start to turn the power on for some of the high voltage equipment – this is a key stage in the project and provides power for the new equipment as well as the trains which will eventually use the Northern Line Extension.

In light of recent events, it is now more challenging to hold our Community Liaison Group meetings (CLG) in the normal way. Should you be interested in participating in a virtual, on-line meeting instead, then please contact us on nle@tfl.gov.uk to express your interest. Thank you.

The Northern Line Extension helpline remains open 24/7. Please do get in touch via the contact details below should you have any queries or questions.

We hope you and your loved ones stay safe and well.