

Northern Line Extension

Nine Elms

Community Liaison Group

19 November 2019

Delivering the Northern line extension with

ferrovial
agroman



MAYOR OF LONDON



TRANSPORT
FOR LONDON



#	Action	Update
1	Provide details on the ratio social housing versus rented accommodation for the new above the station	Our scheme at Nine Elms is part of our Build-to-Rent portfolio, so all apartments will be made available to the rental market. 40 per cent will be affordable The exact amount and mix of units to be provided on-site will be confirmed subject to further discussions with LB Lambeth and their Independent Advisors. Once agreed the details will be issued in a separate Affordable Housing Statement (AHS)
2	Email July's presentation to Freddy Brofman	Unsure whether this action completed or not? Emailed last presentation to Freddy today I am working on website to get all presentations and minutes up to date
3	Investigate whether more be provided for the garden	This was delivered. In addition, a consignment of wood was delivered on 27 August
4	WN to adjust the internal which is shining into JH's bedroom	Lights on site have been adjusted to shine down into the site, and site project managers carried out full review of lights installed NB there are other lights (including street lights) between site and JH's window which may be the source of the nuisance illumination
5	Investigate whether a site can be arranged. For CLG attendees?	This is possible and could be set up for a limited number of delegates
6	Investigate why Wandsworth Road does not have lights	This may be to do with being prudent with limited budgets plus concentrating the efforts on areas that would attract more shoppers
7	Circulate dates for next CLG	Invitation sent to all attendees on 11 October 2019 for next

July '19 – Nov '19

Ticket Hall



FERROVIAL AGROMAN
LAING O'ROURKE JV



July '19 – Nov '19

Ticket Hall



FERROVIAL AGROMAN
LAING O'ROURKE JV



Progress on the GFRP cladding



July '19 – Nov '19

Ticket Hall



FERROVIAL AGROMAN
LAING O'ROURKE JV



GFRC cladding complete



July '19 – Nov '19

Ticket Hall



FERROVIAL AGROMAN
LAING O'ROURKE JV



Progress on the ceiling works



July '19 – Nov '19

Ticket Hall



FERROVIAL AGROMAN
LAING O'ROURKE JV



Ceiling virtually completed



July '19 – Nov '19

Glazing completed



FERROVIAL AGROMAN
LAING O'ROURKE JV



July '19 – Nov '19

Platform Area



FERROVIAL AGROMAN
LAING O'ROURKE JV

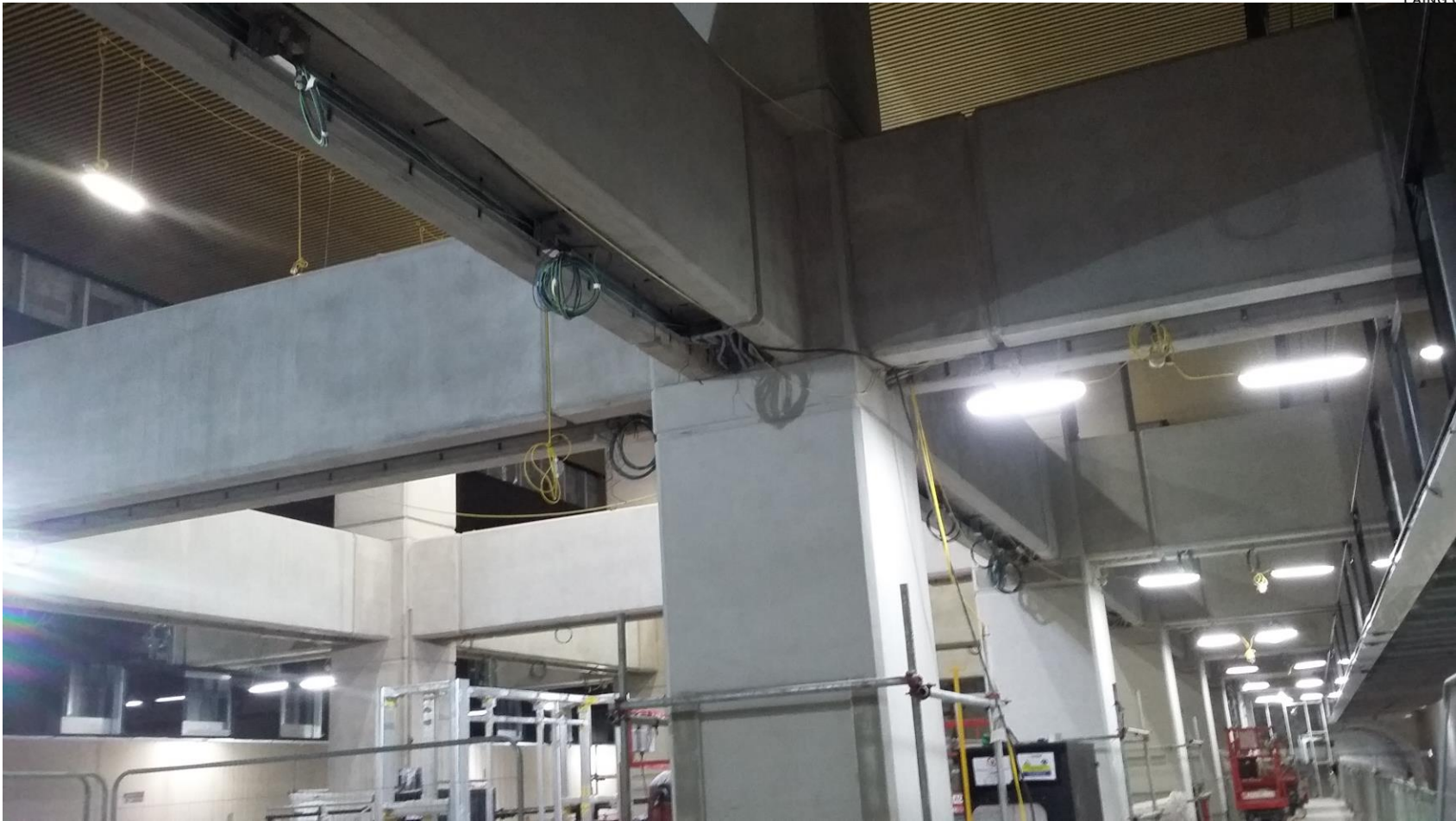


July '19 – Nov '19

Platform Area

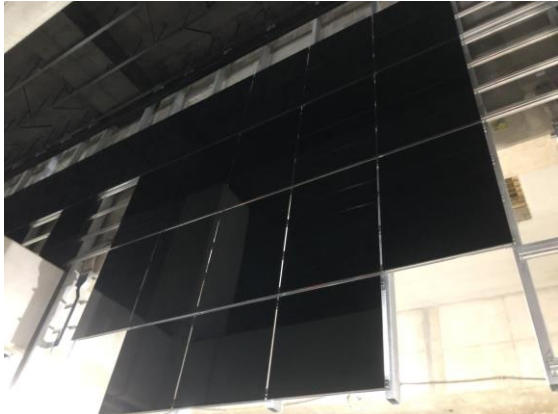


FERROVIAL AGROMAN
LAING O'ROURKE JV



July '19 – Nov '19

Front Of House Glass Ongoing



FERROVIAL AGROMAN
LAING O'ROURKE JV



July '19 – Nov '19

External façade in progress



FERROVIAL AGROMAN
LAING O'ROURKE JV



July '19 – Nov '19

External façade in progress



FERROVIAL AGROMAN
LAING O'ROURKE JV



July '19 – Nov '19

External Drainage Works ongoing



FERROVIAL AGROMAN
LAING O'ROURKE JV



July '19 – Nov '19

MEP CMS and Ductwork ongoing



FERROVIAL AGROMAN
LAING O'ROURKE JV

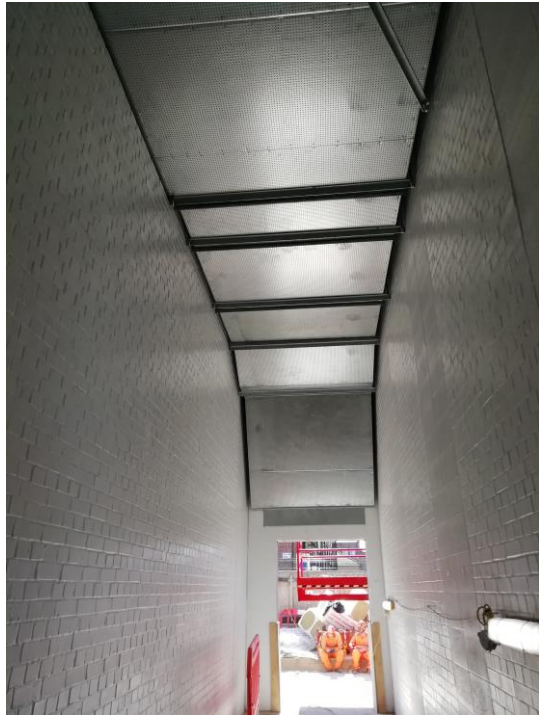


July '19 – Nov '19

UKPN room accepted



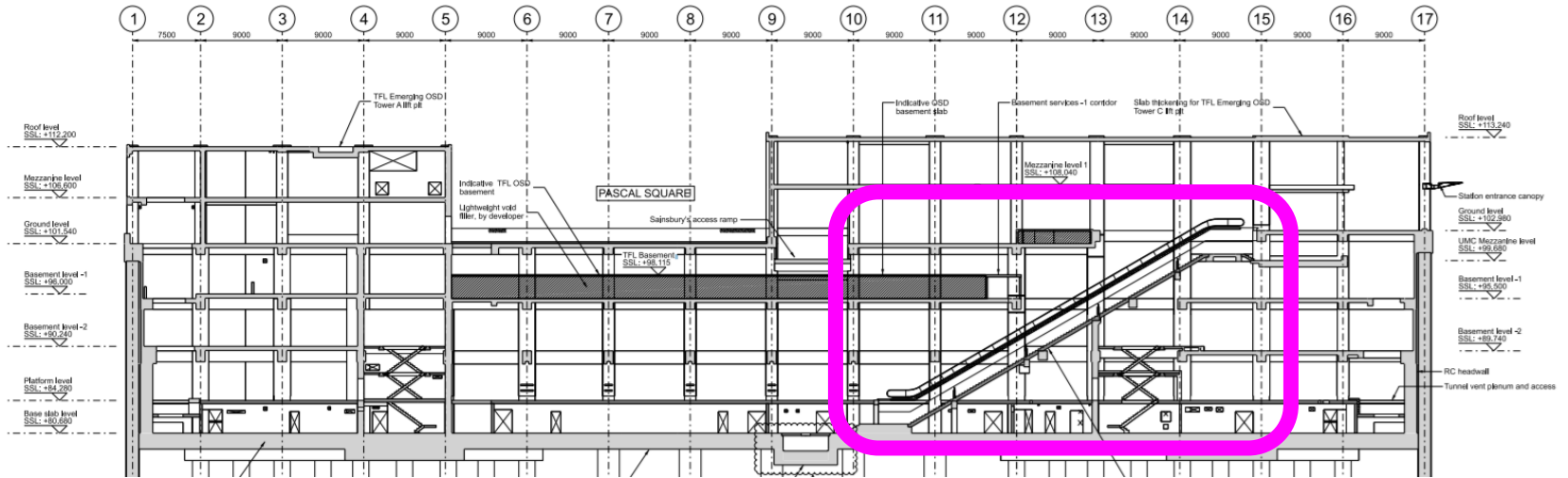
FERROVIAL AGROMAN
LAING O'ROURKE JV



July '19 – Nov '19



FERROVIAL AGROMAN
LAING O'ROURKE JV



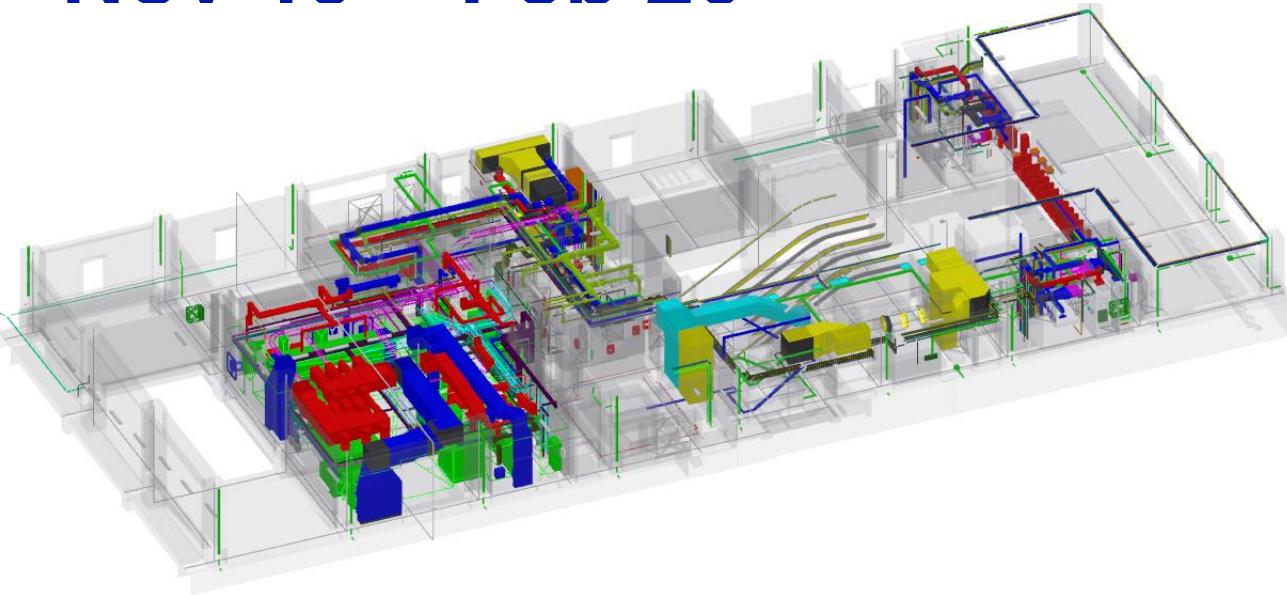
Start installation of escalators



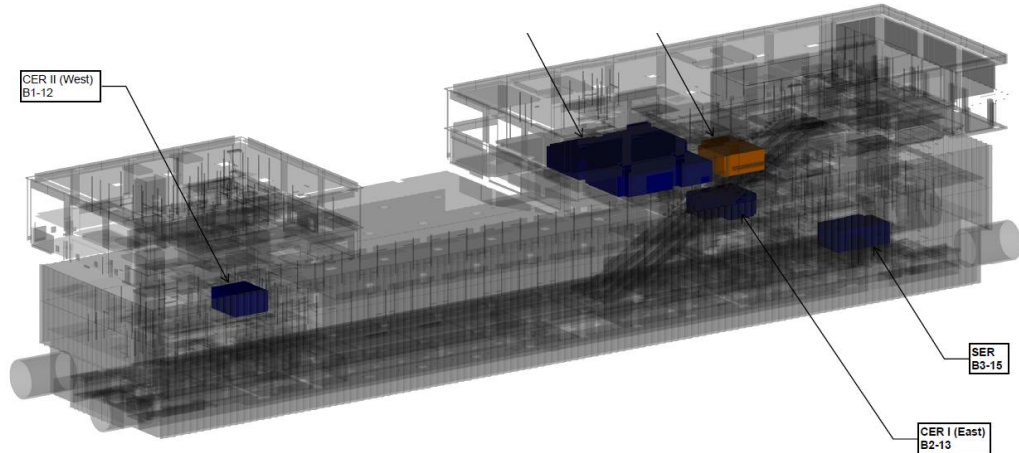
Nov'19 – Feb'20



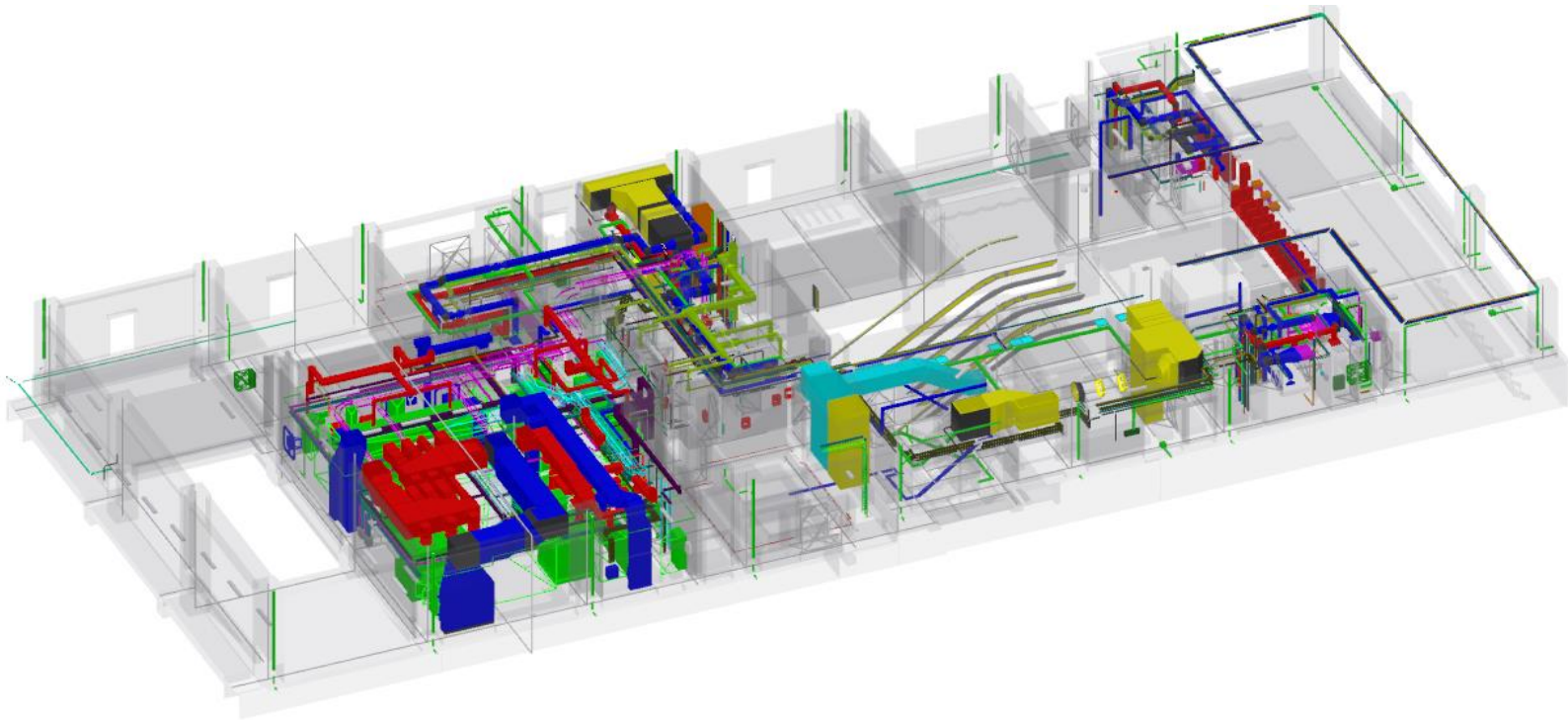
FERROVIAL AGROMAN
LAING O'ROURKE JV



Energizing of
the Station



Nov'19 – Feb'20



Traction Substation MEP Works

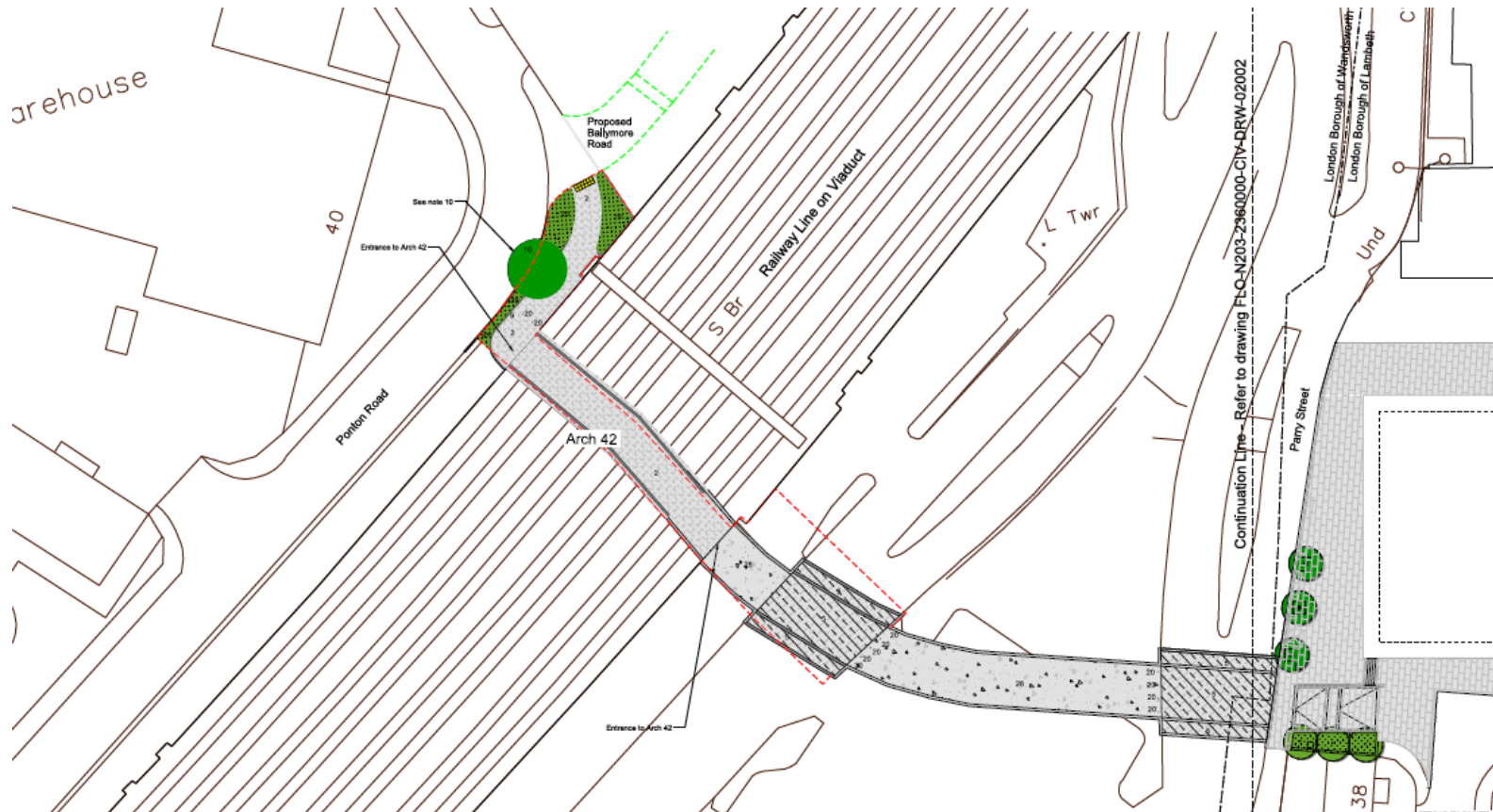


Nov'19 – Feb'20

Arch 42 Area



FERROVIAL AGROMAN
LAING O'ROURKE JV

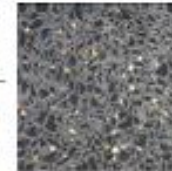


Nov'19 – Feb'20

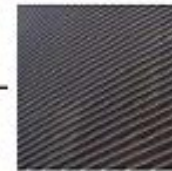
Recon stone completed



FERROVIAL AGROMAN
LAING O'ROURKE JV



DARK RECONSTITUTED
MONOLITHIC PANEL



BLACK SATIN ANODISED
ALUMINIUM LOUVERS



DARK METAL PANEL
WITH VERTICAL PROFILE

Figure 4.4 – External envelope materials strategy

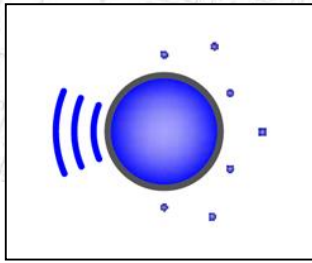
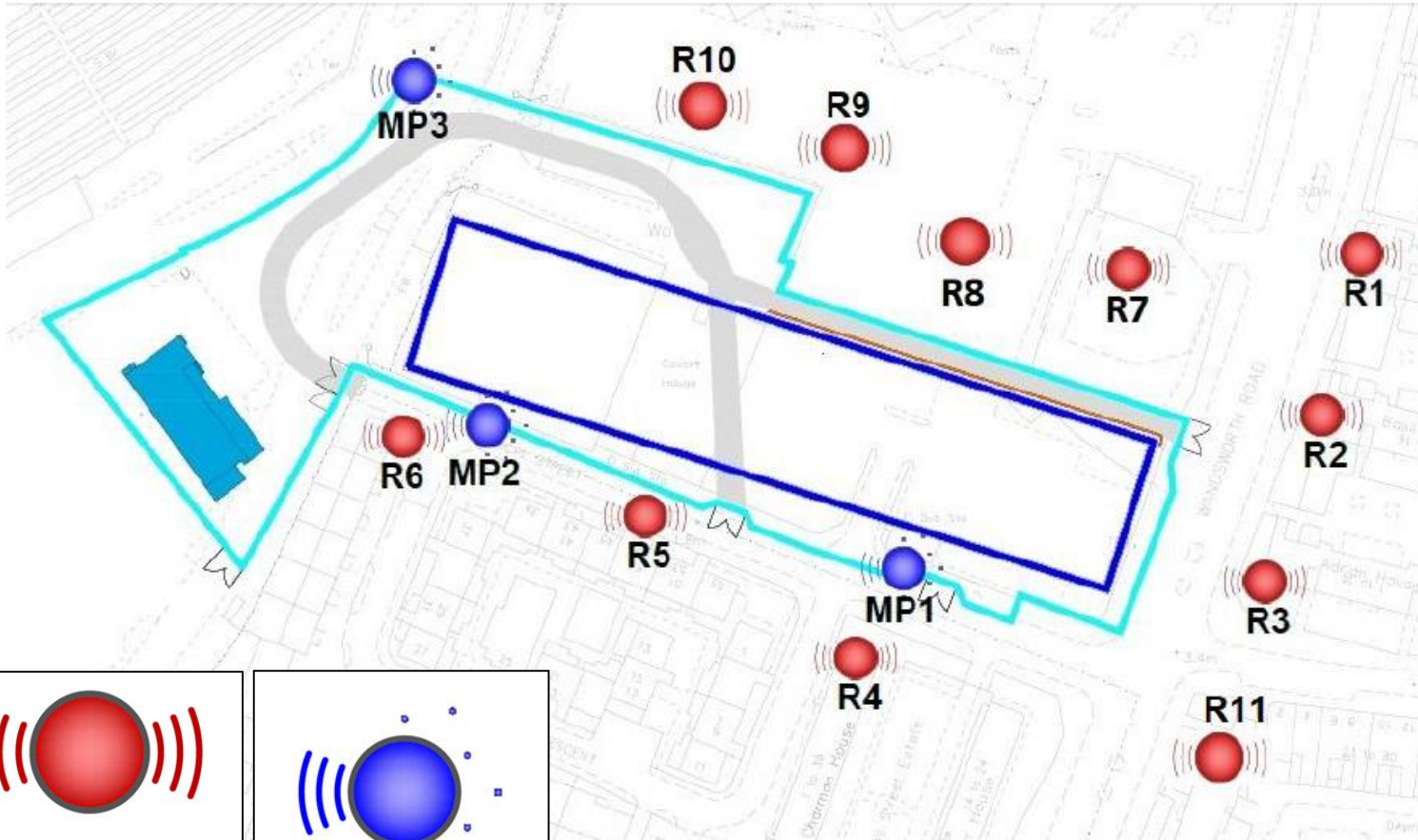


Nov'19 – Feb'20

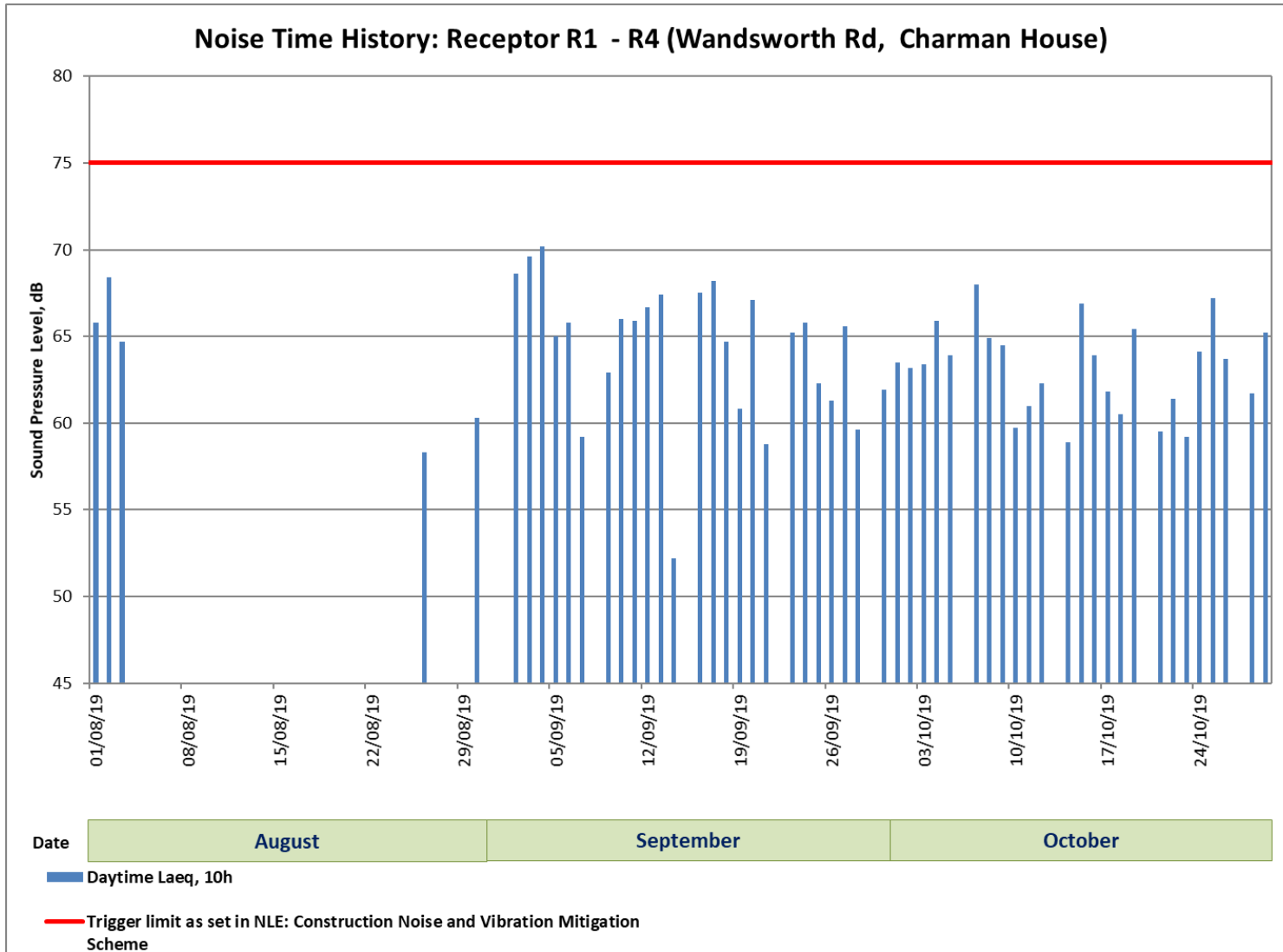
Platform floors completed
Platform Stainless Steel completed
Ticket Hall Stainless steel on going
External envelope virtually completed
Landscapping on going

Environmental Monitoring Locations

Noise monitoring stations and sensitive receptors



Construction Noise Monitoring

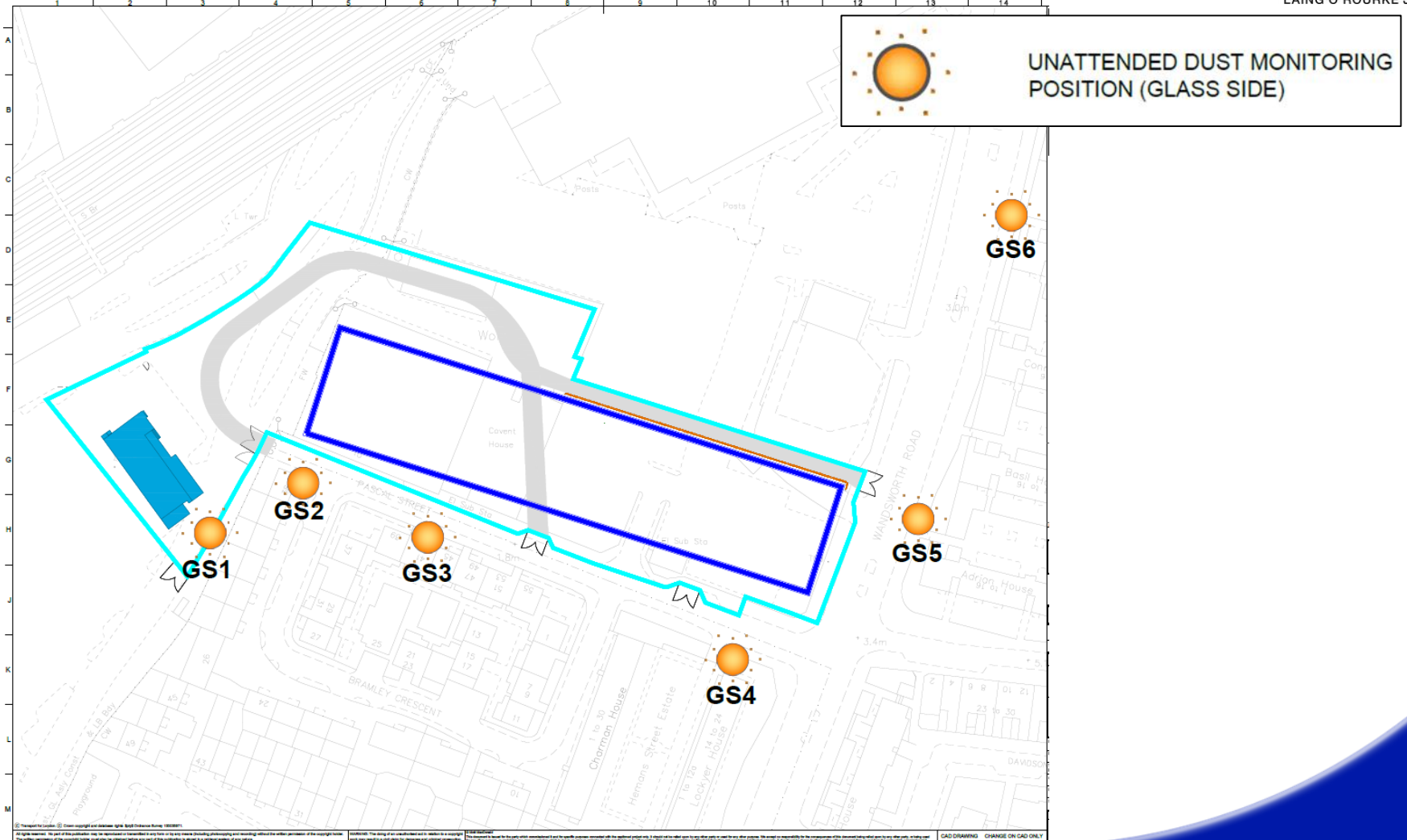


Environmental Monitoring Locations

Dust monitoring stations and sensitive receptors



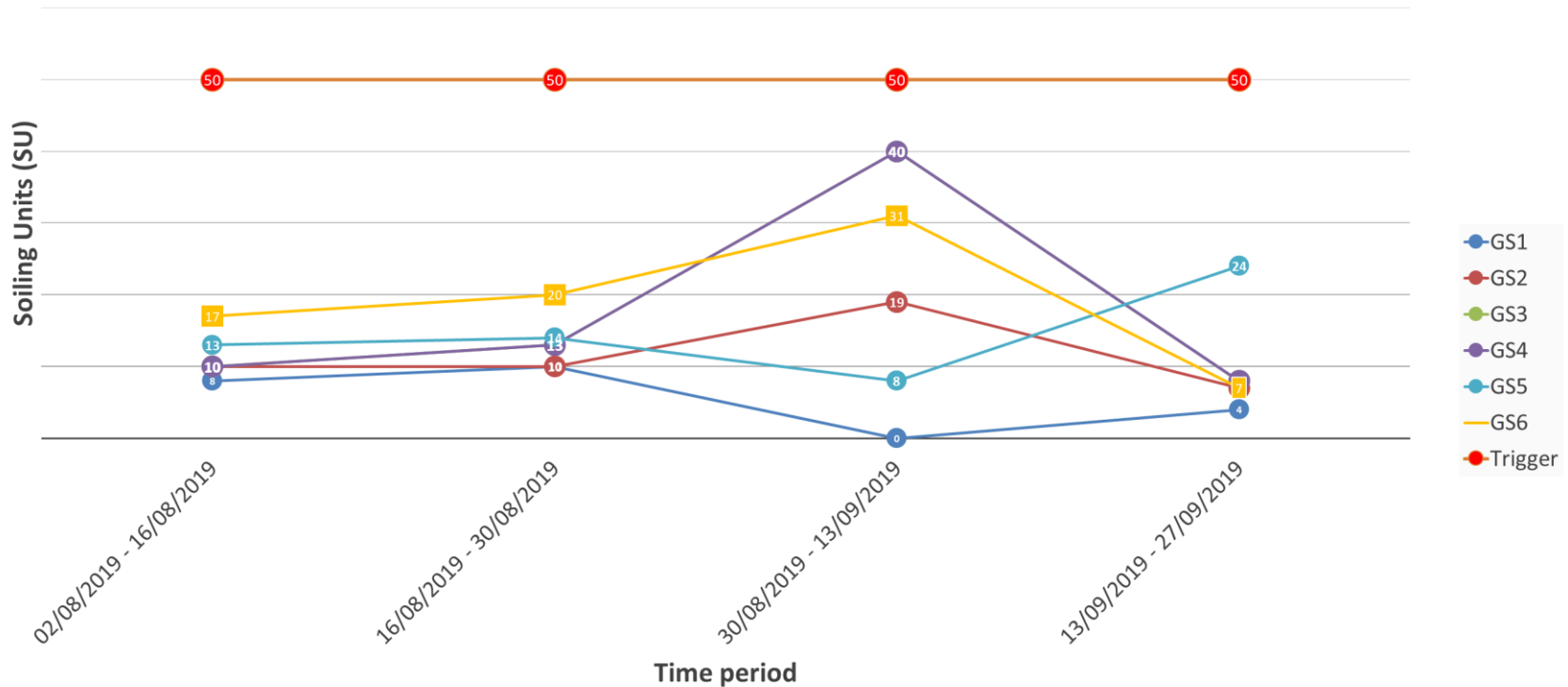
FERROVIAL AGROMAN
LAING O'ROURKE JV



Monitoring Aug - Sep 19

Dust slides results – Passive AQ monitoring

NLE - Nine Elms - Fortnightly Passive AQ monitoring



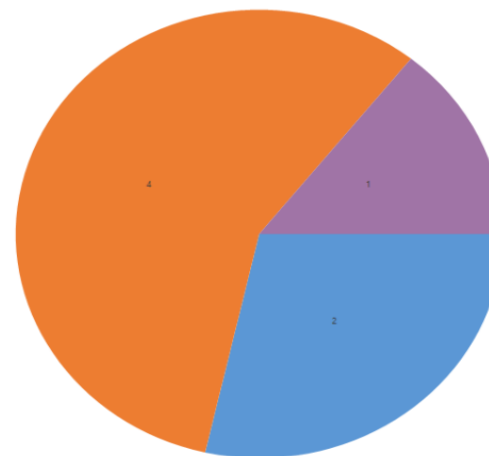
Complaints and enquiries summary



Stats for Nine Elms between 18 July and 19 November 2019

Case Type:

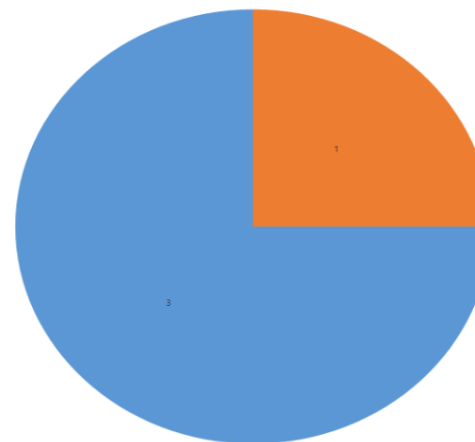
Total:	7 cases
Enquiries:	4 (57%)
Complaints:	2 (29%)
Non-valid contact:	1 (14%)



Complaint Enquiry Non-valid contact

Enquiry Type:

Total:	4 enquiries
Miscellaneous:	3 (75%)
Traffic Management:	1 (25%)



Miscellaneous Traffic Management



Community Engagement and NLE Skills and Employment



Look ahead : we will be supporting a business breakfast event at Sacred Heart

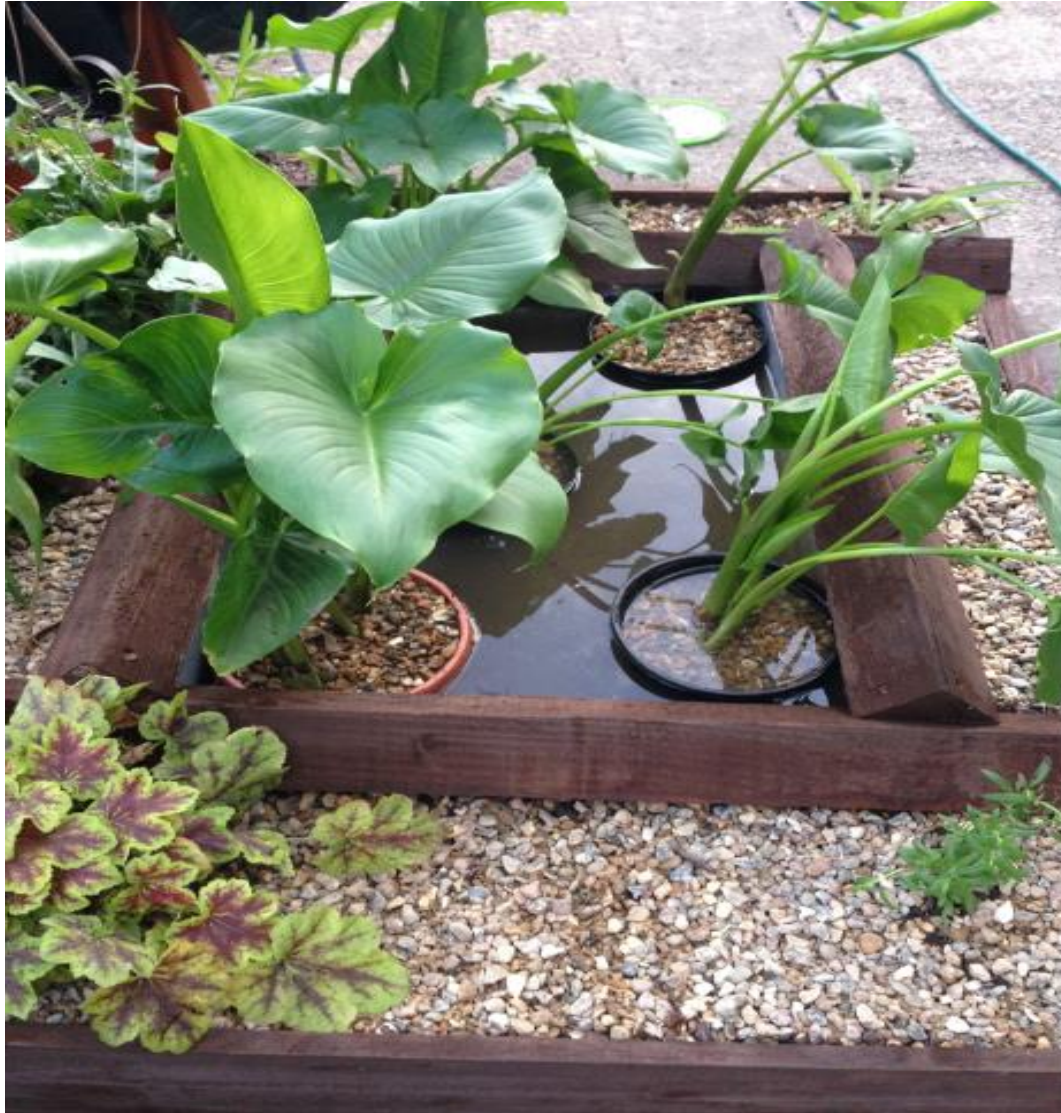
3 students completed **work experience** on the project from Southwark- 2 from Sacred Heart 1 from St Thomas the Apostle
4 **site tours** – 2 from St Thomas 2 from Sacred Heart
1 meet the **professional event** at the Southwark Construction Centre
1 Dragons den activity – Landsdowne school (Lambeth)



Ongoing Community Support



FERROVIAL AGROMAN
LAING O'ROURKE JV



MAYOR OF LONDON



FERROVIAL AGROMAN
LAING O'ROURKE JV



TRANSPORT
FOR LONDON





Nine Elms, Pascal Place Northern Line Extension, Community Liaison Group

19 November 2019





Connected Living London

A joint partnership between Grainger plc and Transport for London






- **Our partnership will**

- Deliver thousands of quality, professionally managed homes for rent across London at seven locations
- Deliver homes at pace, boosting the number of new homes available in the capital
- Generate ongoing revenue for TfL to reinvest into the transport network





Build to Rent

				
Well designed, quality homes	Fair terms for residents	Affordability and speed	Range of amenities	Other benefits
<p>Good quality designed and specified for renting</p> <p>Professional on-site management and maintenance support</p>	<p>Flexible long-term tenancies</p> <p>No ongoing management fees</p>	<p>Meets the needs of those who are eligible for Council Allocated housing</p> <p>Increased speed of delivery and increased occupancy versus for sale homes</p>	<p>Amenities will be flexible to reflect the needs of our residents</p> <p>Security of onsite and convenience of an onsite management team</p> <p>High speed Wi-Fi, and a residents gym</p>	<p>Key focus on community and resident wellness</p> <p>Social environmental and governance focused</p> <p>More homes for renters in London</p>



Nine Elms, Pascal Place

Existing Consent

- 332 homes in three buildings of 21, 15 and 14 storeys above the station podium
- Luxury one-bed penthouse apartments
- 30 per cent affordable housing
- Public realm improvements around Nine Elms Underground Station

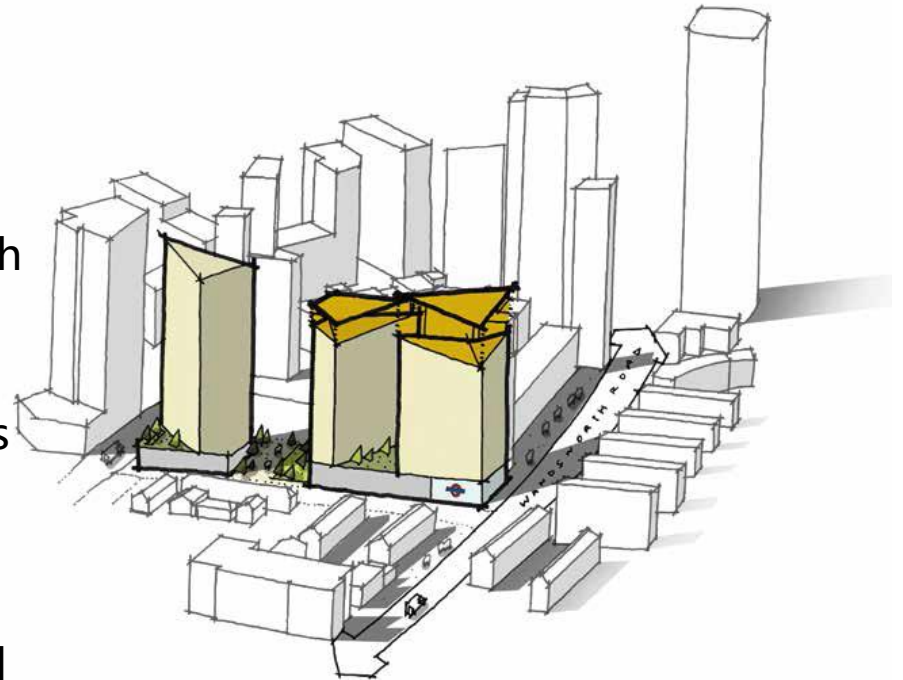




Nine Elms, Pascal Place

Emerging Proposals

- A Build to Rent development, responding to the local needs for housing
- Around 450 homes, 40 per cent of which will be affordable
- Achieves a significant increase in homes with a modest uplift in height, one to three storeys
- Retail opportunities at ground level and public square space in the new Pascal Square





Public consultation, activity to date



7,579

Newsletters to publicise the exhibition



2-Day

Public consultation on 11 and 12 October 2019



96 addresses visited

Door knocking exercise in October



14 hours

Of face-to-face stakeholder engagement



65 people in attendance

At public Consultation events in October 2019



5,748 website visits

since it launched, with over 1,000 completing the online polls



Next Steps

www.givemyview.com/nineelms

- Our project team will consider all feedback from the local community, before talking again to Lambeth
- We will continue to talk to local communities ahead of a second stage of formal consultation in early 2020
- Our aim is to submit our planning application in Spring 2020



Ways to contact

- It is important that calls are logged through the NLE helpdesk on 0343 222 2424 (Option 1)
- Email nle@tfl.gov.uk
- Drop In sessions
- Please visit:

<https://tfl.gov.uk/northern-line-extension>