

# Northern line extension

## MONTHLY UPDATE

March - April 2016

### Kennington Green

Thank you for your patience whilst we continue with the Northern Line Extension works near you. We would like to update you on where we are and what is planned for the next four to eight weeks.

#### What has been completed:

We have completed approximately 70% of the Piling works with 245 of 389 piles installed.

To replace the recently removed Tree of Heaven, four 6m pear trees have now been placed in position on site. The trees are in planters to enable us to move them around so as to protect the trees and avoid damage to them. This will help the site team to provide safe working areas whilst activities are taking place in the restricted environment. It is intended that the trees will provide some screening amenity when they come into bud in the Spring.

The reconfiguration of the Thames Water Sewer connection has been completed for the Chivas Distillery. The hoarding in Montford Place has now been moved back to its original position. Vehicle access to Kennington Road from Montford Place will remain closed to enable us to construct the Acoustic Enclosure on site in April. This operation should be completed within 8 weeks. We are continuing to liaise with the local authority and TfL Surface to return access to Montford Place to its original configuration when the Enclosure is completed



#### What is planned:

Work will continue with the piling operations to allow the commencement of excavation of the shaft. The piling operation is due for completion at the end of April 2016.

Between March and April, we will be constructing the concrete capping beams on top of the piles and temporary foundations will be put in place ready for the installation of the Acoustic Enclosure, referred to

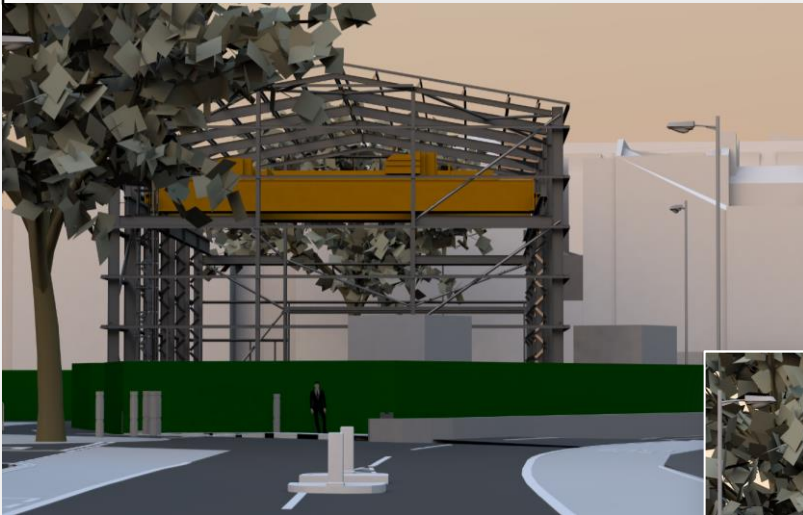
**See page overleaf**

[nle@tfl.gov.uk](mailto:nle@tfl.gov.uk)

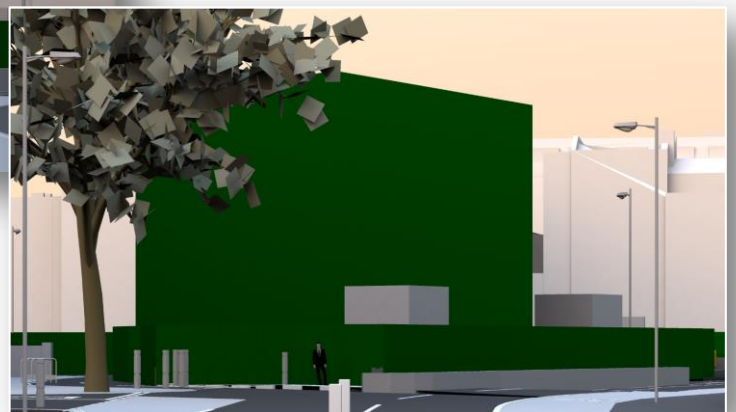
0343 222 2424

above (see Artists Impression). To enable us to carry out this work some breaking out of the concrete guide walls, used during the piling operation, will take place. We will endeavour to minimise disturbance and will diligently manage and monitor the work in accordance with the Code of Construction Practice, including the control of noise and vibration, using best practicable means and keeping within agreed environmental limits.

There may be occasions when concreting operations overrun the normal core working hours. This is due to the need to ensure the safety and integrity of the completed structure and must be completed in one operation.



Artist's impression of the acoustic enclosure at KG



We are continuing with the installation of monitoring equipment around our sites and some properties have been contacted regarding Pre-Construction Defect Surveys ahead of the Sprayed Concrete Lining tunnelling starting later in spring.

Our core working hours are: **Monday to Friday 0800 to 1800 and on Saturday from 0800 to 1300**

Your feedback is important to us. We will continue to hold regular "Drop In" days at the Montford Place work site so that residents can meet staff and discuss any concerns or queries. We will advise you when the next session is planned.

The next Kennington Green Community Liaison Group meeting is scheduled to take place on **17 March** at a venue to be confirmed. Please contact us for further information.

If you have any concerns or queries, please contact us at [nle@tfl.gov.uk](mailto:nle@tfl.gov.uk)

or call our 24/7 helpdesk on 0343 222 2424 (Option 1)