

Northern Line Extension

Kennington Green Community

Liaison Group

29.06.15



NLE Project Draft timetable

Year	Key milestones
2014	Transport and Works Act Order decision, Design & Build contract signed
2015	Agreement on Code of Construction Practice Part B, Start of main works at all sites
2016	Start of Tunnel Boring Machines
2017	Completion of tunnelling
2018	Fit out of new stations, Kennington shafts complete inc reinstatement, work at Kennington station complete
2019	Testing, commissioning, trial operations
2020	NLE complete and in service

Summary Update March-June 2015



1) Cabin install at Montford Place



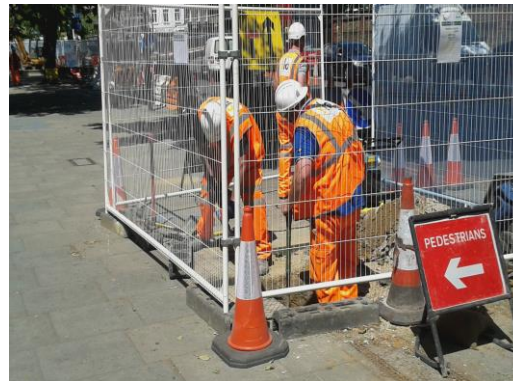
2) Traffic Management in place



3) Multi Utility Trench



4) Installation of Substation bases



5) Service trial holes



6) Montford Place Compound Set-up



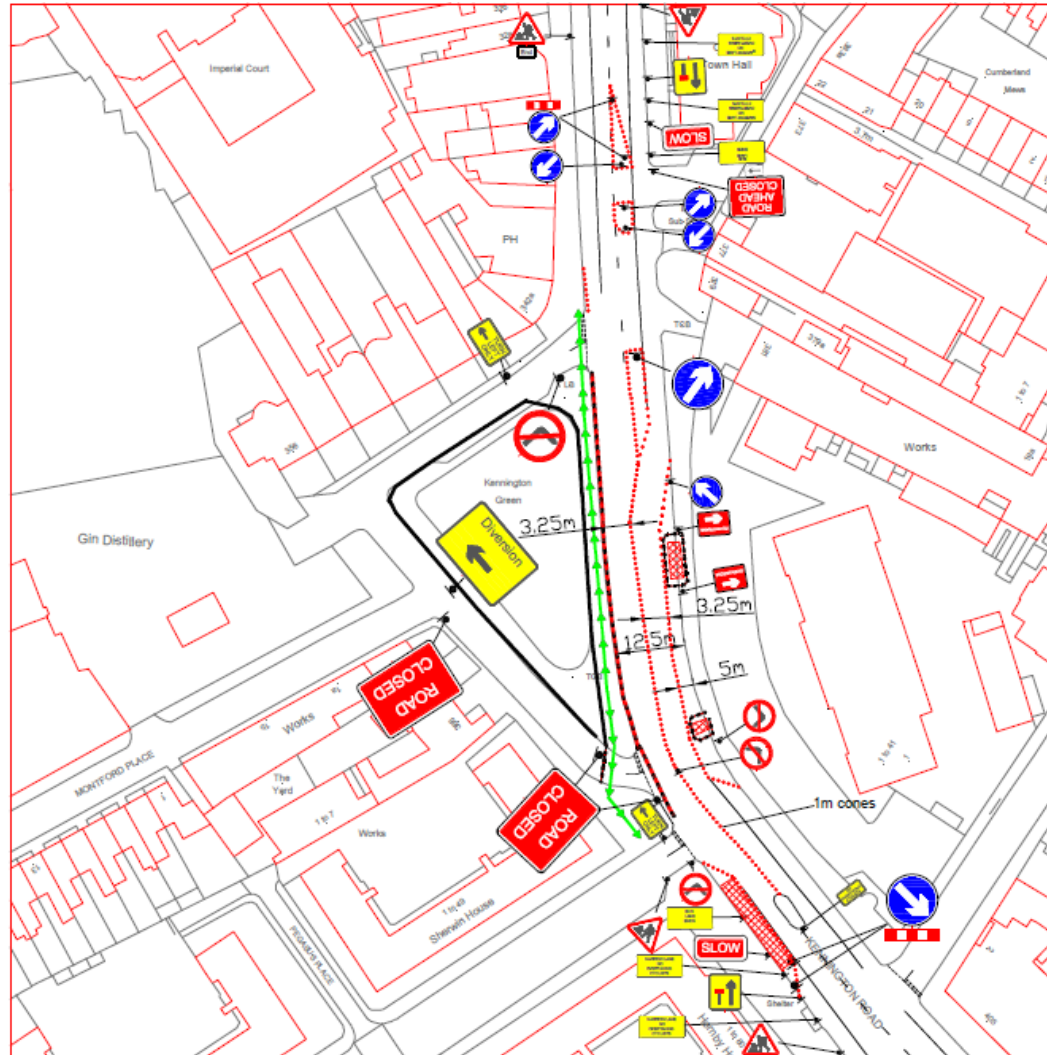
Kennington Green look ahead



Year	Key milestones
Jun – Aug 15	<ul style="list-style-type: none">• Commence Auger Bore under Kennington Road• Commence Hoarding on Green• Removal / Planting Gingko tree• Install Traffic Management for north and south utilities works• Install Piling Mat• Place order with Piling contractor
Sep – Nov 15	<ul style="list-style-type: none">• Complete pre-construction utilities diversionary works• Install guide walls• Commence Secant Piling• Demolish Chivas wall by Montford Place



Traffic Management Kennington Green



Traffic Management Kennington Green



1) Pedestrian footpath reopened



2) New Traffic Management Plan



3) Multi utilities reinstated



Thank You

Ground Investigation

- FLO is in the RIBA 4 design process with TfL further developing effective solutions for the design and build of the NLE project.
- Compensation grouting has been removed from programme.
- Ground conditions for tunnelling predominantly London Clay. An ideal tunnelling medium.
- Groundwater/ step plate junction within a full face of impermeable London Clay.

Code of Construction Practice Part B

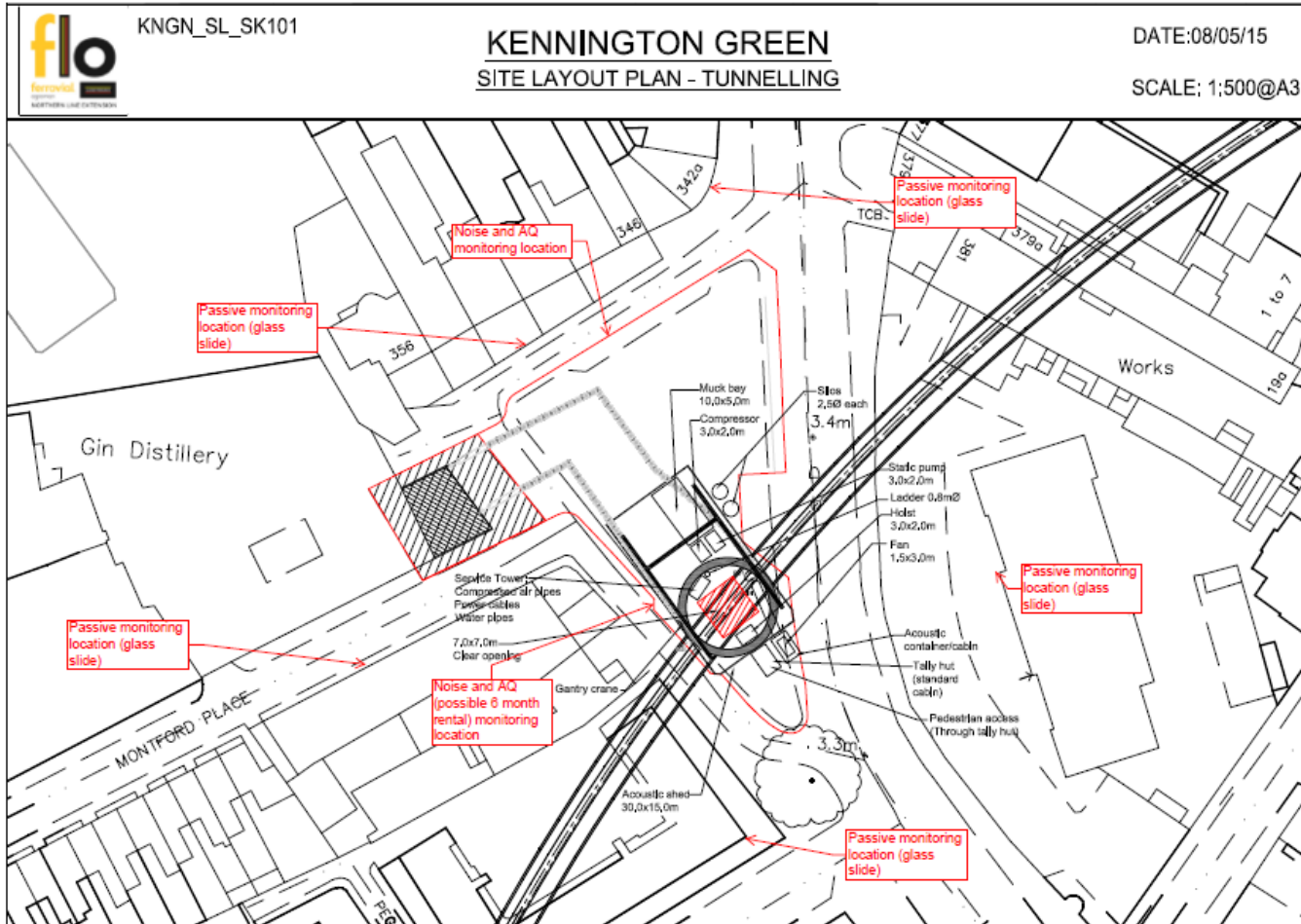
- The Code of Construction Practice was approved by the London Borough of Lambeth in May
- The requirements of the Code of Construction Practice parts A and B have been incorporated into the FLO practices and procedures
- Core working hours are from 08:00 to 18:00hrs Monday to Friday and 08:00 to 13:00hrs on Saturdays



Environmental Monitoring

- Noise (and air quality) monitors will be installed on the site hoarding, (once agreed with LB Lambeth). This will complement the attended monitoring currently being undertaken.
- Noise predictions show that an acoustic shed will be needed to minimise the noise associated with 24/7 tunnelling works.
- For all other activities a standard height hoarding (2.4m) will provide sufficient screening to meet the requirements of the NLE Construction Noise Mitigation Scheme

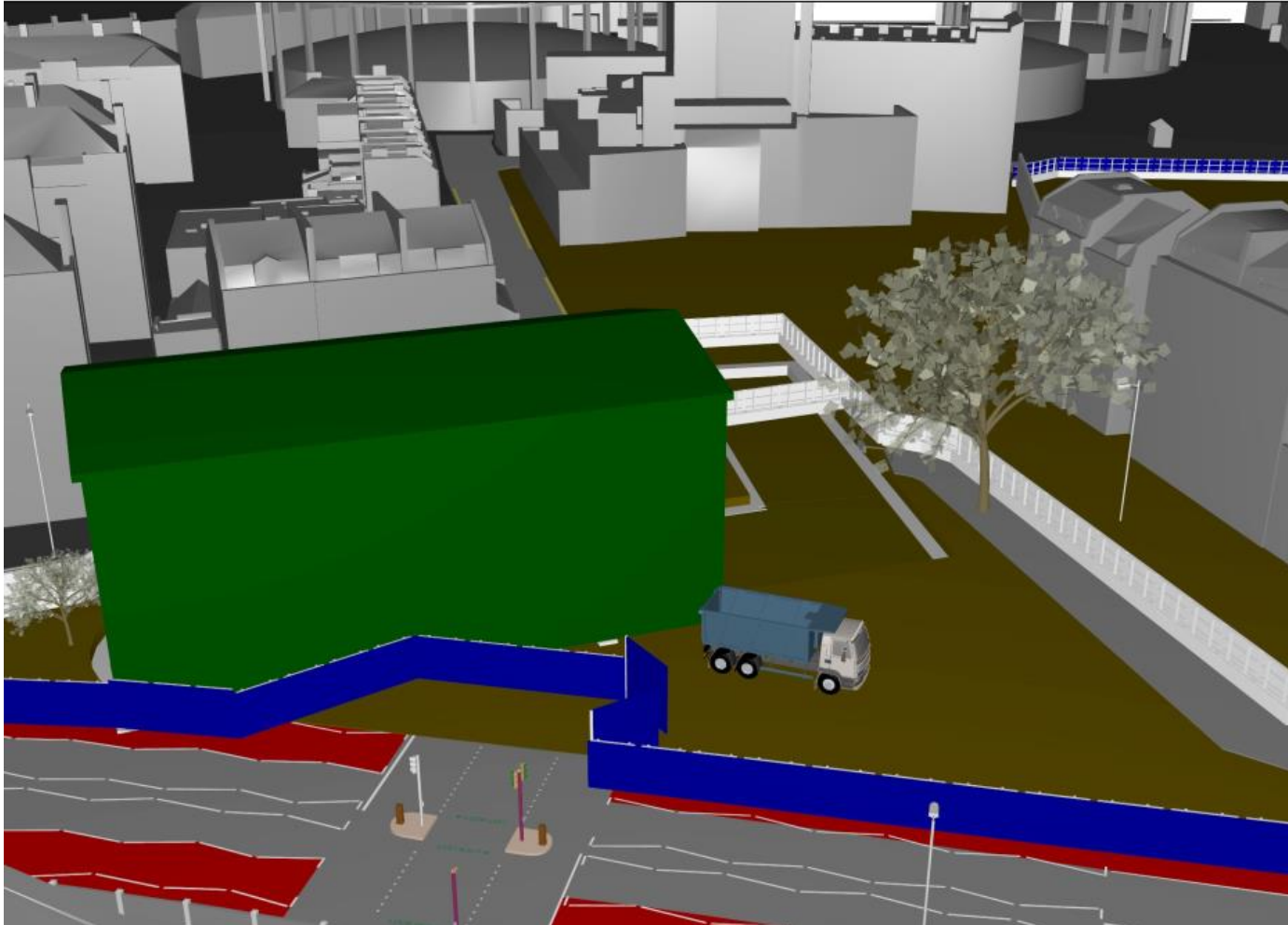
Proposed Noise and Dust Monitoring Locations



Acoustic Shed at Kennington Green



Acoustic Shed at Kennington Green



Instrumentation & Monitoring



- Consultants finalising damage assessments which will inform the detailed monitoring scope – which is crucial for programme success required in this period.
- Monitoring tender returns are currently under review. Monitoring subcontract award is imminent.
- Installation of ground monitoring studs around shaft area commenced April 2015. Base readings have been taken.
- A minimum of 4 weeks notice will be given to building owners prior to the installation of monitoring equipment.
- Monitoring equipment will comprise Building Research Establishment (BRE) studs (structure levelling studs) and 3D geodetic prisms.



Monitoring techniques

Buildings – Real time data:

3D geodetic prisms



Automatic Total Station (ATS)



Prisms

ATS: an electrical/optical instrument used in modern building construction to measure slope distances from the instrument to a particular point.



Monitoring techniques

Buildings – Manual data:

BRE studs (structure levelling studs)



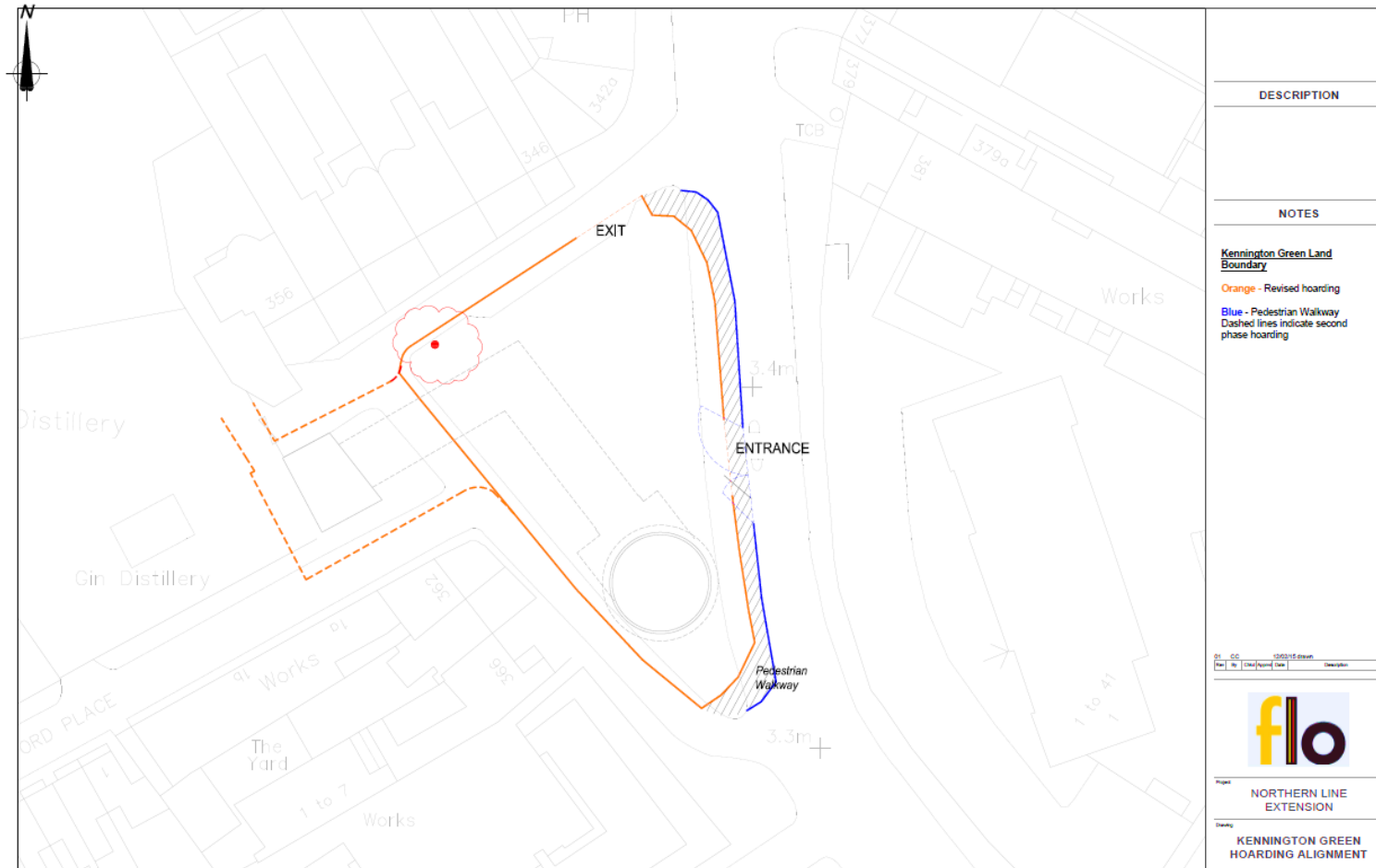
Hoardings Kennington Green



- Permanent hoardings to be installed at Kennington G.
- 2.4 metres high
- Corporate TfL standards followed
- 24/7 Helpdesk contact details to be presented at all hoardings / Notice Boards
- Installation of graphic work later in the year.
- Pattern sympathetic with the environment



Hoardings at Kennington Green



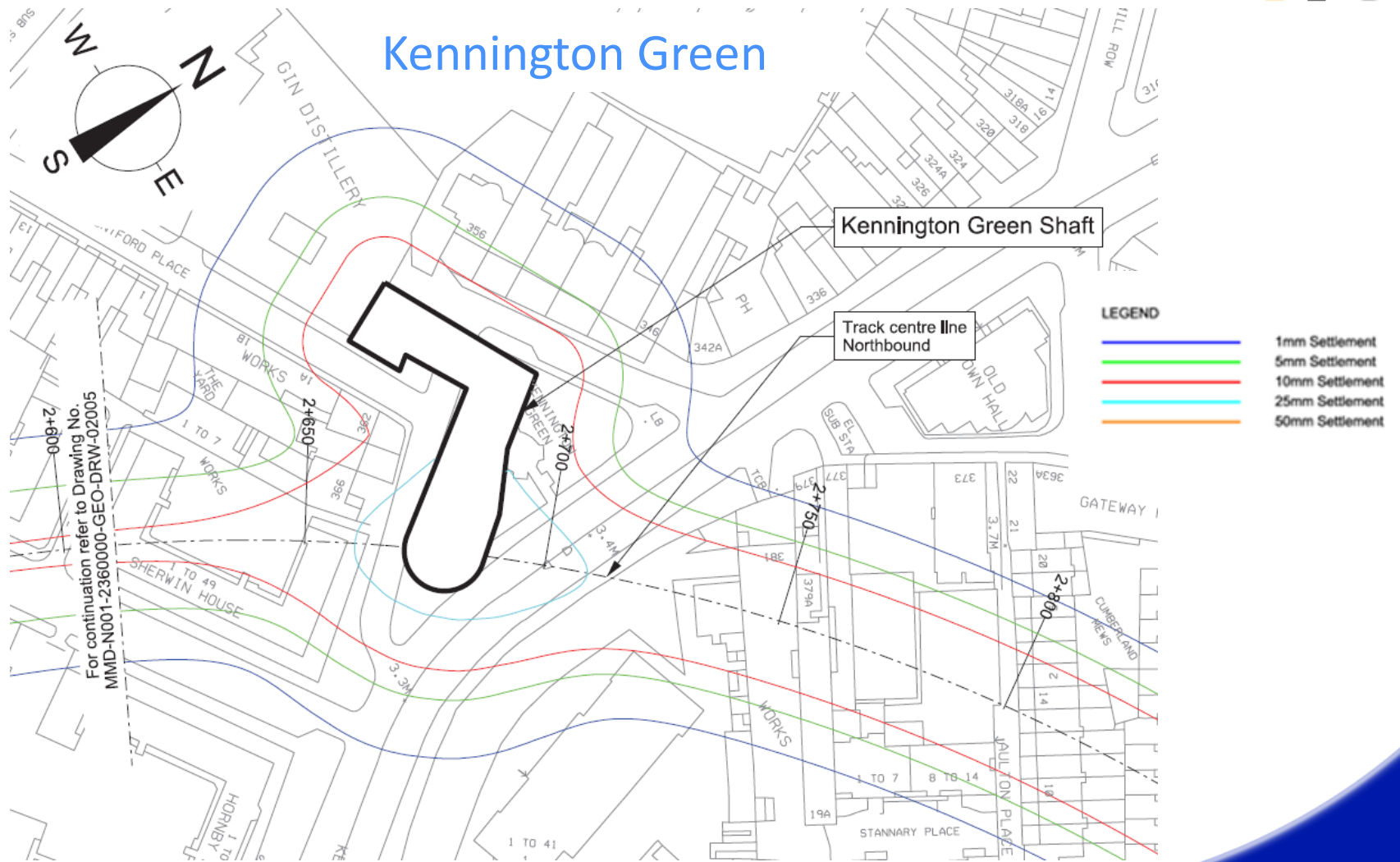
Defect / Condition Surveys



- To be undertaken on properties predicted to experience 1mm or more settlement.
- TfL has started contact to affected properties via introductory letter.
- Subcontract has been awarded and is CPM Surveys Ltd.
- Around shafts, surveys will commence in July/August to ensure they are undertaken no earlier than 12 weeks, and no later than 4 weeks prior to the commencement of construction of the relevant part of the works.
- In areas of Spray Concrete Lining (SCL) works and Step Plate Junctions surveys will be undertaken at a later date in advance of construction (second half of 2016 and first half of 2017)
- Where necessary, a second survey will be undertaken to establish the difference between the two assessments. Photographic and written.

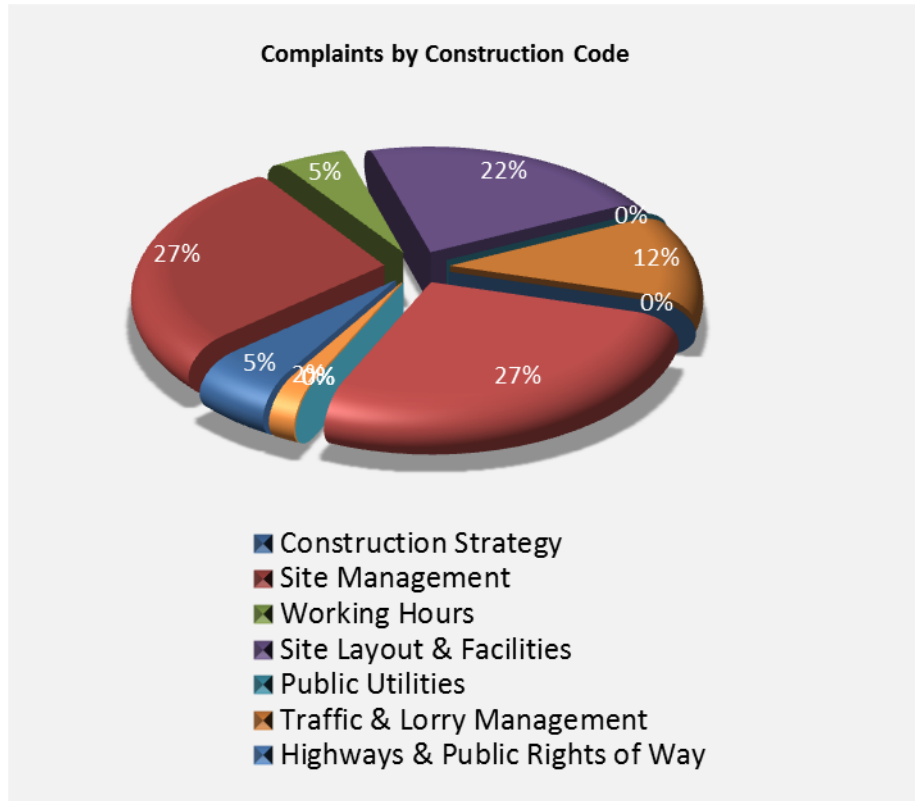


Settlement Contours



Kennington Enquiries Summary

March – June 2015



-> 43 enquiries complaints Kennington Area. From March - June

-> Road Safety / Traffic Management Site management

-> 98% Closed

-> Positive feedback from Drop-in sessions and complaints handling

-> Detailed list of complaints and enquiries with Local Authorities



Updates and newsletters

- Monthly Activity Updates sent out 29 May and 12 June 12. Invitation for a Drop In sent 15 June
- Via letter drop and emailing list
- NLE Quarterly newsletter to distributed mid June
- Drop in session held at Bishop House Nursery on 18 June
- Positive feedback received from attendants
- Future drop in to be scheduled in due course

NLE Newsletter June 2015



Northern line extension

Issue 3 • June 2015



Prep work starts at all NLE sites

Work to prepare the Kennington Green, Kennington Park, Nine Elms and Battersea Power Station NLE sites began in March. This follows the approval of the Code of Construction Practice Part B by local authorities. The Part Bs are tailored to the nature of the works planned at each site.

This is a major accomplishment for the project team and has been achieved through hard work and collaboration with the local authorities as well as very useful feedback from residents along the route.

Work in the last three months at these sites includes:

- Clearing the site
- Setting up for new site accommodation
- Checking the ground for obstruction
- Archaeological and ordinance surveys
- Utility diversions
- Installing temporary hoardings
- Implementing traffic management schemes

Kennington

We are creating two permanent shafts at Kennington Park and Kennington Green to provide ventilation, cooling and emergency access to the tunnels.

At Kennington Green, temporary fencing has been installed and site offices have been established at the Montford Place support site. Utility diversion works are ongoing and the traffic is being managed accordingly. We have been working closely with utility services and the local authorities to ensure we keep disruption to a minimum.

Work over the next three months includes:

- Continuing utility diversions
- Putting up permanent hoarding
- Tree removal and lopping



Utility diversions

At Kennington Park, we have been busy clearing the site and conducting archaeological and ordinance surveys. Diversion of utilities in this area has also started, including diversion of a major gas main.

Work over the next three months includes:

- Relocating the pedestrian entrance at Bishops House Nursery
- Continuing utility diversions
- Installing permanent hoardings
- Demolishing the Lodge

Nine Elms

We are building a new Underground station at Nine Elms near Pascal Street and Wandsworth Road.

The boiler house on site has now been demolished. Material from the demolished building is now being re-processed to use in the piling mat (which is the base from which the excavation of the station box is formed)

Works over the next three months include:

- Power diversions and installation of a new power feed to the site
- Delivery and fitting out of site offices
- Continuing construction of the piling mat and guide walls
- Demolition of Covent House and Banhams Security building



Demolition of the boiler house



Demolition of the chimney

Community Liaison Groups

The following Community Liaison Groups meet regularly to provide residents, businesses and councillors with an opportunity to find out more about the Northern line extension:

- Kennington Park and Newington
- Kennington Green
- Nine Elms and Oval
- Battersea

- Core Group – An overall liaison group that considers route-wide issues

Residents are welcome. Presentations, minutes and details of upcoming meetings are on our website tfl.gov.uk/northern-line-extension.

Transforming the Northern line

The extension includes more than 3km of new tunnels connecting to the existing Northern line at Kennington and two new Underground stations at Nine Elms and Battersea.

The extension is part of a massive investment programme to transform the Northern line which includes:

- A signalling upgrade which has achieved a 20 per cent increase in capacity through central London
- A 24-hour Tube service on Fridays and Saturdays from September
- Plans to rebuild Tube stations that are critical to improving capacity and supporting regeneration. These include Tottenham Court Road, Bank, Camden Town and Elephant & Castle

Staying in touch

For more information and to register for updates on the scheme, visit tfl.gov.uk/northern-line-extension

You can also email the project team at nle@tfl.gov.uk or call our helpdesk on 0343 222 2424.

Timeline



MAYOR OF LONDON



Skills and apprenticeships



- Skills & Employment Strategy, Delivery Plan for Schools and Young People on-going
- FLO to host 5 Work Experience Students from Ernest Bevin College, Wandsworth. Starting 22 June 2015.

Employment/Skills/Diversity on the NLE programme

- FLO is working in partnership with TfL and the local authorities – including the Nine Elms Vauxhall Strategy Board Employment, Training & Business Charter, Wandsworth Chamber of Commerce and Nine Elms Supply Chain
- Make sure employment/training opportunities are advertised within the job opportunity/brokerage schemes operated by Southwark, Lambeth & Wandsworth councils
- Encourage job starts for workless people in London, placement & taster positions, apprenticeships, skills development for staff, engagement with schools



Jobs and Business Opportunities



- FLO has created a working group with Local Authorities and local brokerages to ensure opportunities are advertised and promoted locally
- **LEAP Group; Local Employment and Procurement Group NLE**
- Small and medium business had the opportunity to meet with major contractors at an event in BPSD. FLO in attendance.
- FLO continues to engage with small and medium companies through events and endeavours to recruit / source locally when possible.



Community engagement strategy



- Draft Strategy 6 month Look Ahead. Tabled.
- Includes community comments and forecast activities
- **6 months look ahead include:**
- Engagement with local groups
- Community Drop-in sessions
- School activities to start within the next period.
- Identification of new resident groups within the Kennington area



Consents



Key approvals granted since the last CLG meeting	
Code of Construction Practice Part B (planning condition 7) – all sites	L B Lambeth, Wandsworth
All sites – application to discharge planning condition 10 - Archaeology – all sites	L B Lambeth, Wandsworth
Approval of the Yellow Box Junction (planning condition 18) – Kennington Park	LB Southwark
Marine approvals (TWAO protective provisions) - Battersea	Environment Agency, Marine Management Organisation, Port of London Authority

Current applications under determination	
Removal of a single tree (planning condition 5)– Kennington Green	LB Lambeth
Application for the fixing of monitoring to Listed structures (planning condition 11)– Kennington Park and Kennington Green	LB Lambeth and LB Southwark

