



FERROVIAL AGROMAN  
LAING O'ROURKE JV

# Northern Line Extension

## Nine Elms and Oval

### Community Liaison Group

17<sup>th</sup> January 2017

Delivering the Northern line extension with

ferrovial  
agroman



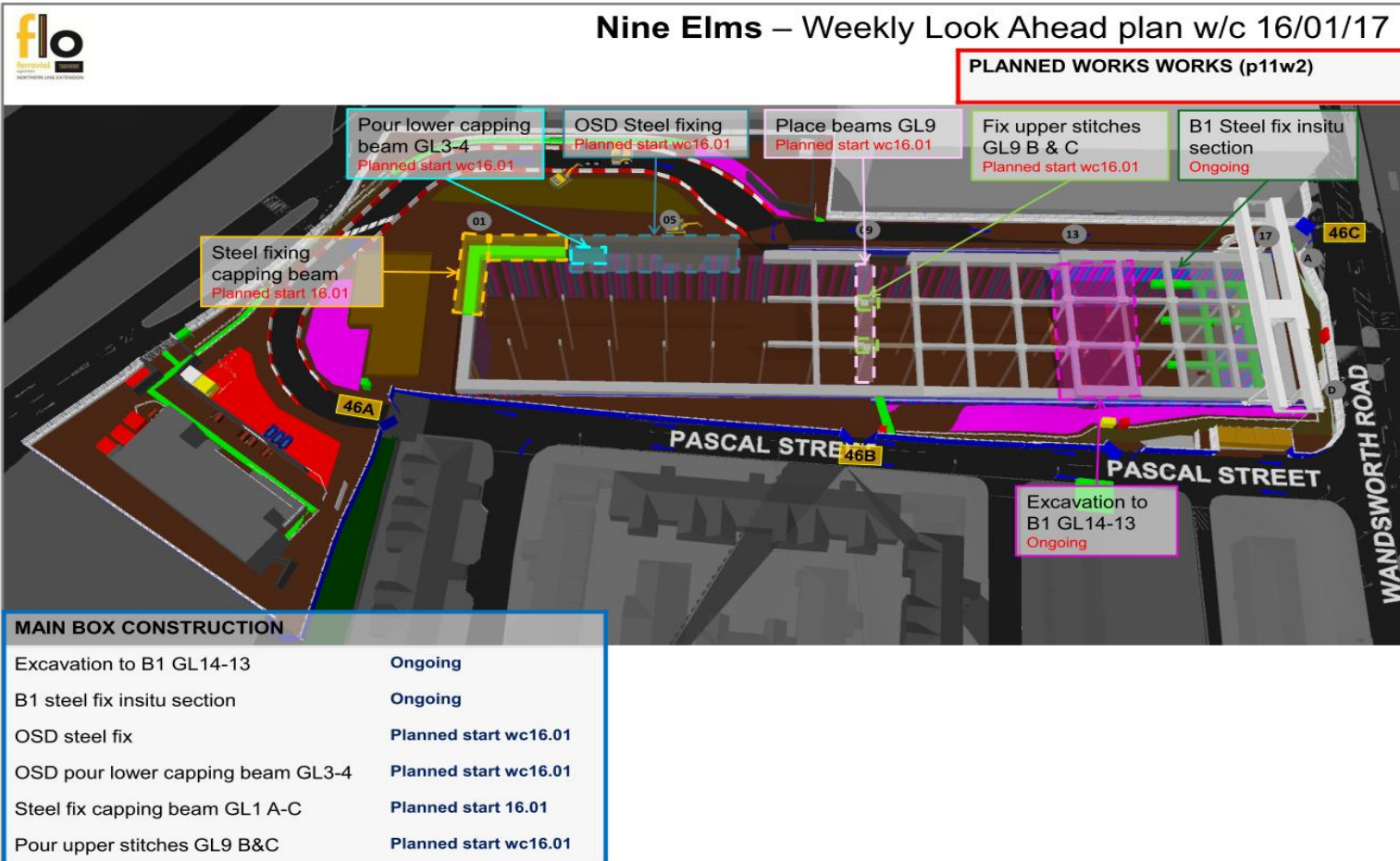
MAYOR OF LONDON



TRANSPORT  
FOR LONDON



# Site Map Overview



# Summary Update Oct 16- Jan 17



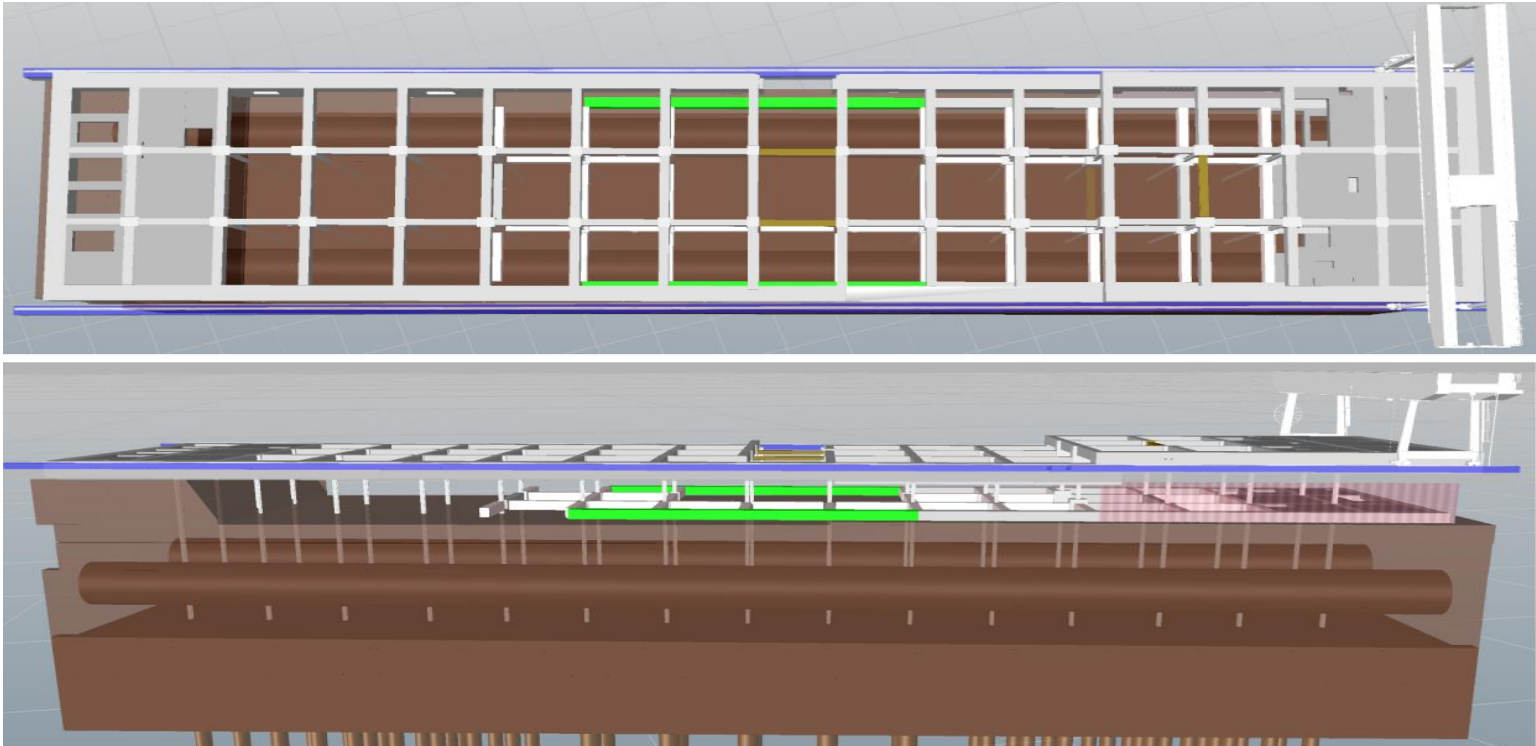
FERROVIAL AGROMAN  
LAING O'ROURKE JV

- Capping beam practical completion
- Continue with Precast beams installation at ground level, including in-situ stitches (links between the beams and the columns)
- Continue with Excavation works to Basement 1 level
- Reinforced concrete works commenced to Basement 1 level

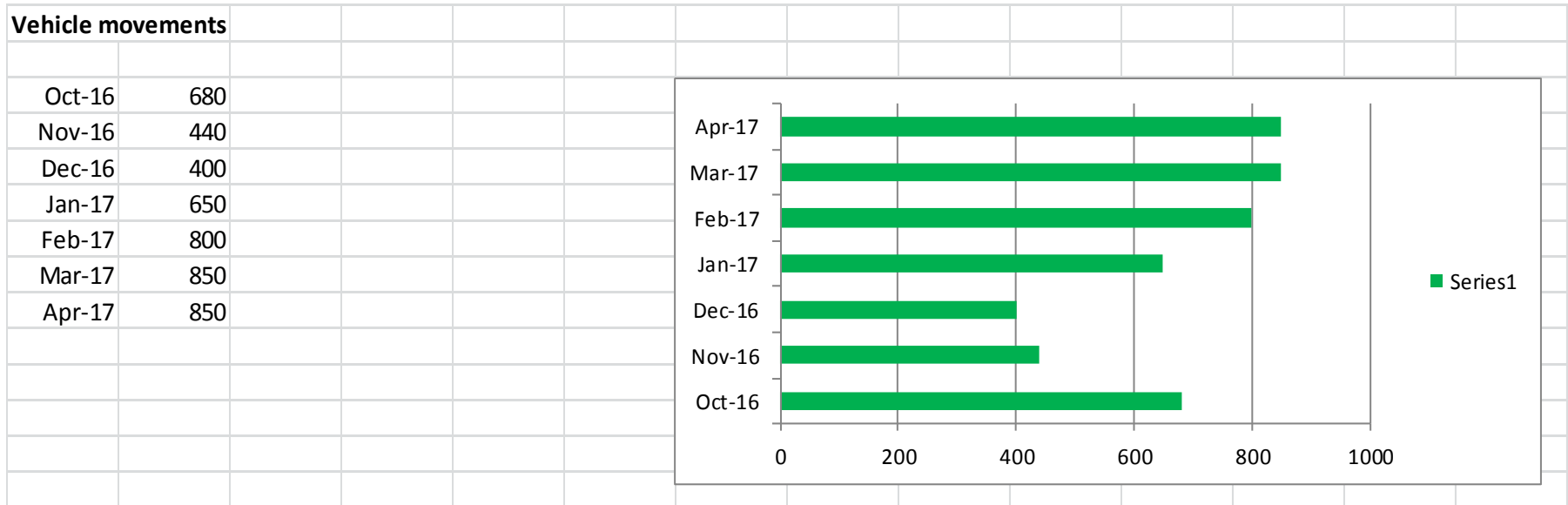


# Look Ahead Jan – Apr 2017

- Continue with excavation works to Basement 1 level
- Construction of in-situ slabs at west end (ground level) and east end (basement 1 level)
- Install more precast beams and construct the in-situ stitches to the columns (ground and basement 1 levels)
- Gantry crane will be operating along the whole station



# Logistics. Vehicle Movements Oct 16- Apr 17



- Principal vehicle movements related to :
  - Muck away operations
  - Concrete, rebar and precast beams deliveries

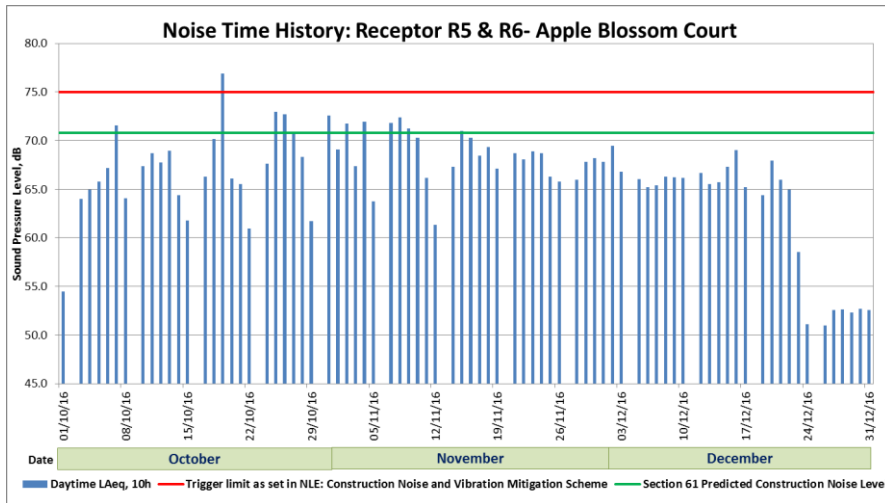
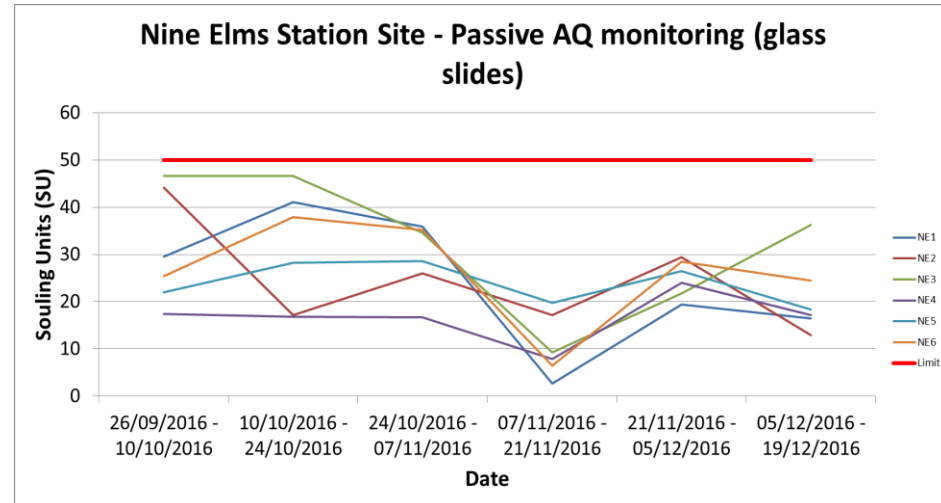
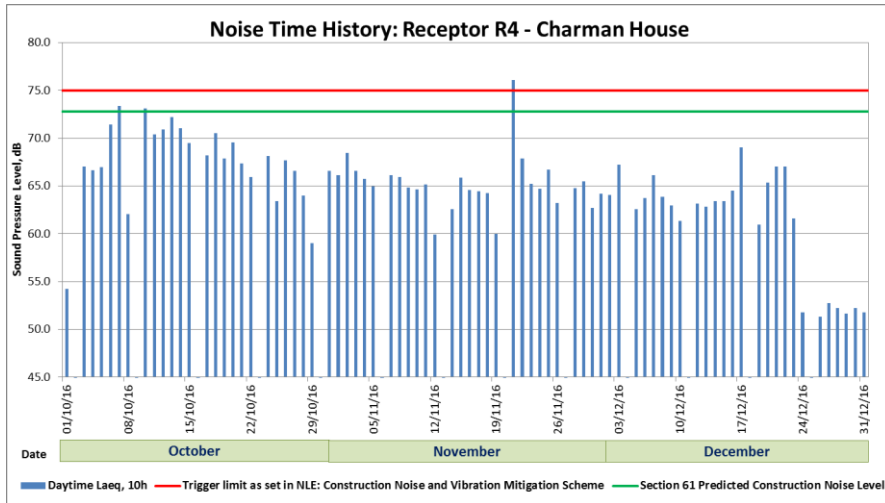


# Environmental Monitoring

## Oct – Dec 2016



FERROVIAL AGROMAN  
LAING O'ROURKE JV

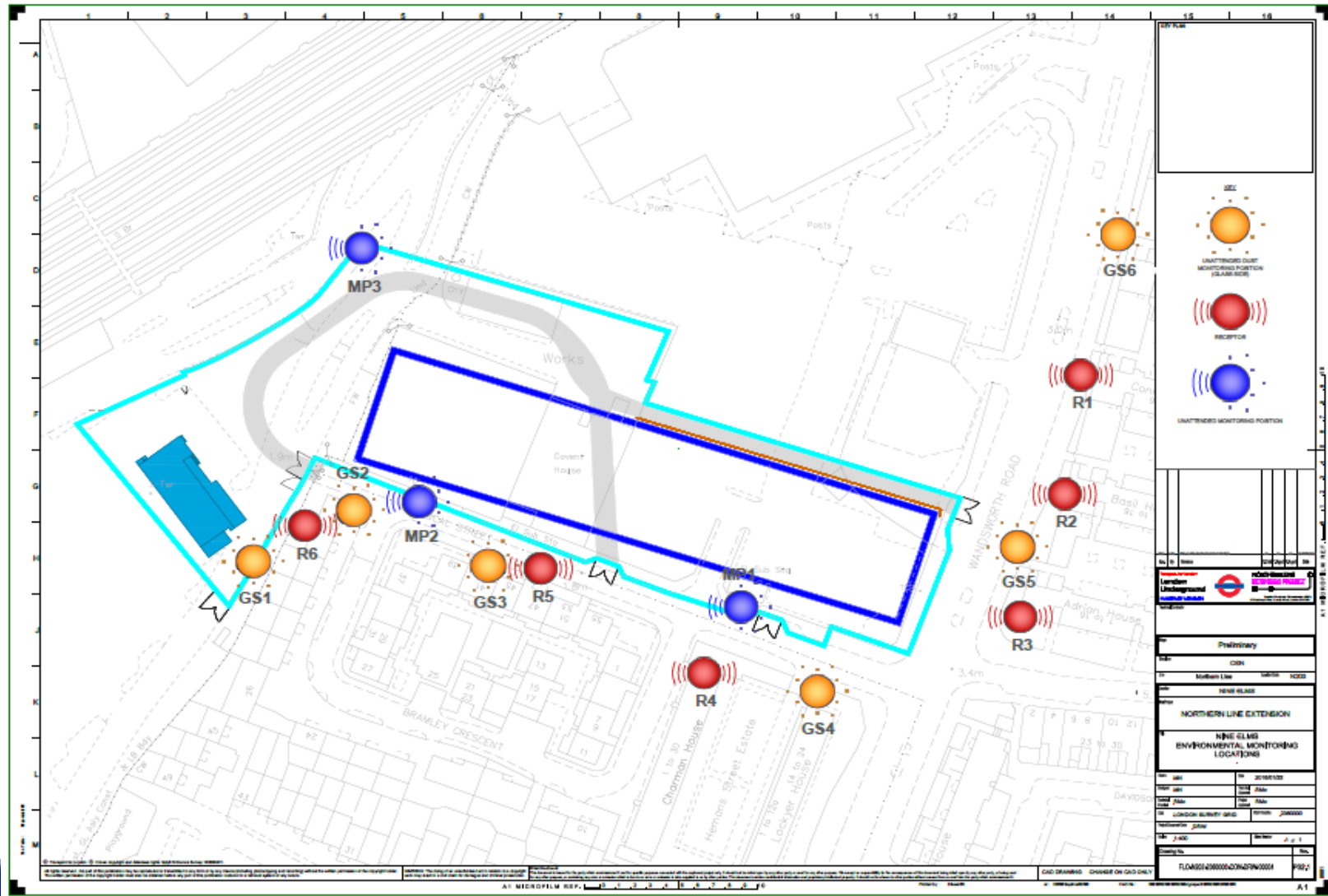


During the last three months of monitoring, there were two **noise** triggers; the first one on 19<sup>th</sup> October 2016 and the second one on 21<sup>st</sup> November 2016. The levels exceeded were in the order of 1.9 dB and 1.1 dB respectively over the 75 dB 10 hour daily average. For the rest of this period, noise values have been within the Section 61 restrictions.

Regarding passive **air quality** monitoring, it can be seen that all the monitoring positions have been within the threshold levels over the last three months.



# Environmental Monitoring points and Receptors. Locations



# Your Feedback

You Suggested	We Did
A request for more information regarding Defect Surveys	We incorporated this into the December TfL Newsletter, distributed across the tunnel route
A request for SLNT activities	This was provided as a hand out at the last CLG meeting
To refrain from breaking out between 2-3pm close to the boundary wall of Pascal St	This was honoured over a 2 week period which was the duration of the noisy activities adjacent to the area
Integrated meetings with major developments in the area	The VNEB meeting joins all the major contractors together to look at how to collaborate and reduce the impact on the community
Keep Roads Clean	Road sweepers are working around our site, 30 % uplift of road sweeper presence.
Engagement with Local Schools	We continue to host work experience students from the three Boroughs and we have to date provided 320 days of placements





# Engagement Opportunities

- CLG meetings
- One to one meetings
- Drop in sessions
- School and Youth Engagement
- Stakeholder Activities
- LEAP group meetings



# Ways to contact us

- It is important that calls are logged through the NLE 24/7 helpdesk on 0343 222 2424 Option 1
- Email [nle@tfl.gov.uk](mailto:nle@tfl.gov.uk)
- Regular Drop In sessions
- Please visit:

<https://tfl.gov.uk/northern-line-extension>