



FERROVIAL AGROMAN
LAING O'ROURKE JV

Northern Line Extension

Battersea

Community Liaison Group

20.10.15

Delivering the Northern line extension with

ferrovial
agroman



MAYOR OF LONDON



TRANSPORT
FOR LONDON



NLE Project Draft timetable

Year	Key milestones
2014	Transport and Works Act Order decision, Design & Build contract signed
2015	Agreement on Code of Construction Practice Part B, Start of main works at all sites
2016	Assembly of Tunnel Boring Machines
2017	Completion of tunnelling
2018	Fit out of new stations, Kennington shafts complete inc reinstatement, work at Kennington station complete
2019	Testing, commissioning, trial operations
2020	NLE complete and in service

Summary Update June – Sept 2015

- Setting up Conveyor for muck away
- Crossover box obstruction removal and piling mat installation
- Setting up new office accommodation
- Preparation for diaphragm walling activities
- Crawler crane arrival
- On - going survey and monitoring railway infrastructure



Battersea Update June – Sept 2015



FERROVIAL AGROMAN
LAING O'ROURKE JV



Look Ahead Oct - Dec 2015

- Continue diaphragm piling
- Bentonite Plant / Heavy plant arriving on site
- Completion of utilities diversion
- New entrance completed. Signalised junction in place
- New office cabins fully operative
- Barge operations start
- On - going pre-construction defect surveys
- On-going monitoring installation



Conveyor and Barge movement



- Installation of footbridge
- Existing grade 2 listed bridge removed
- Core Hours Loading
- During Tunnelling, 24/7
- Two 500t barges = 50 lorries

Your Feedback



FERROVIAL AGROMAN
LAING O'ROURKE JV

You Suggested	We Did
Demand on Local transport system from construction workers	TfL is considering this enquiry
More diligence and coordination for Traffic Management Issues	Bi-weekly open meetings between TfL surface, authorities, NLE and community
Opportunities for local businesses	LEAP group is progressing. Site canteens are run by local businesses
Concerns regarding delivery of information to Viridian and Savona	Contacts added and issue resolved.
Engagement Meetings	Flo have had two drop in sessions at Kennington area in September / Cycling event on October 15 with BPSDC
Integrated meetings with major developments in the area	NLE and Tideway are joining their CLG meetings. BPSDC on same date every 6 months



Engagement Opportunities



- Drop-In sessions
- Join Traffic Management meetings
- Community Liaison Groups
- Engagement Sessions



- Cycle Safety Events

Ways to contact us

- It is important that calls are logged through the NLE 24/7 helpdesk on 0343 222 2424
- Email nle@tfl.gov.uk
- Regular Drop In sessions
- Please visit:

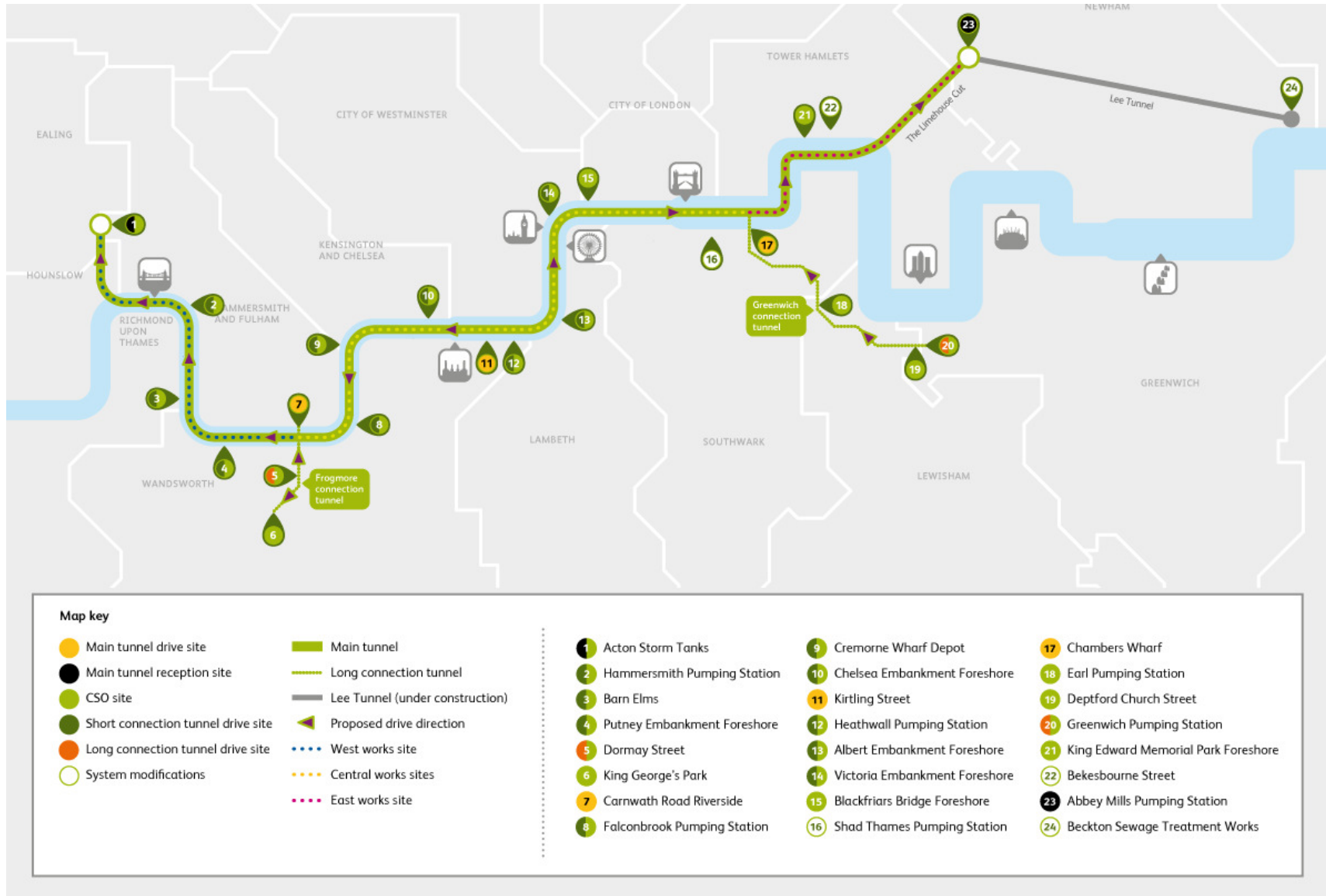
<https://tfl.gov.uk/northern-line-extension>

Population of London



- In 2014, **62 million** cubic metres of sewage discharged to the tidal River Thames.
- 50 discharges on average in a typical year

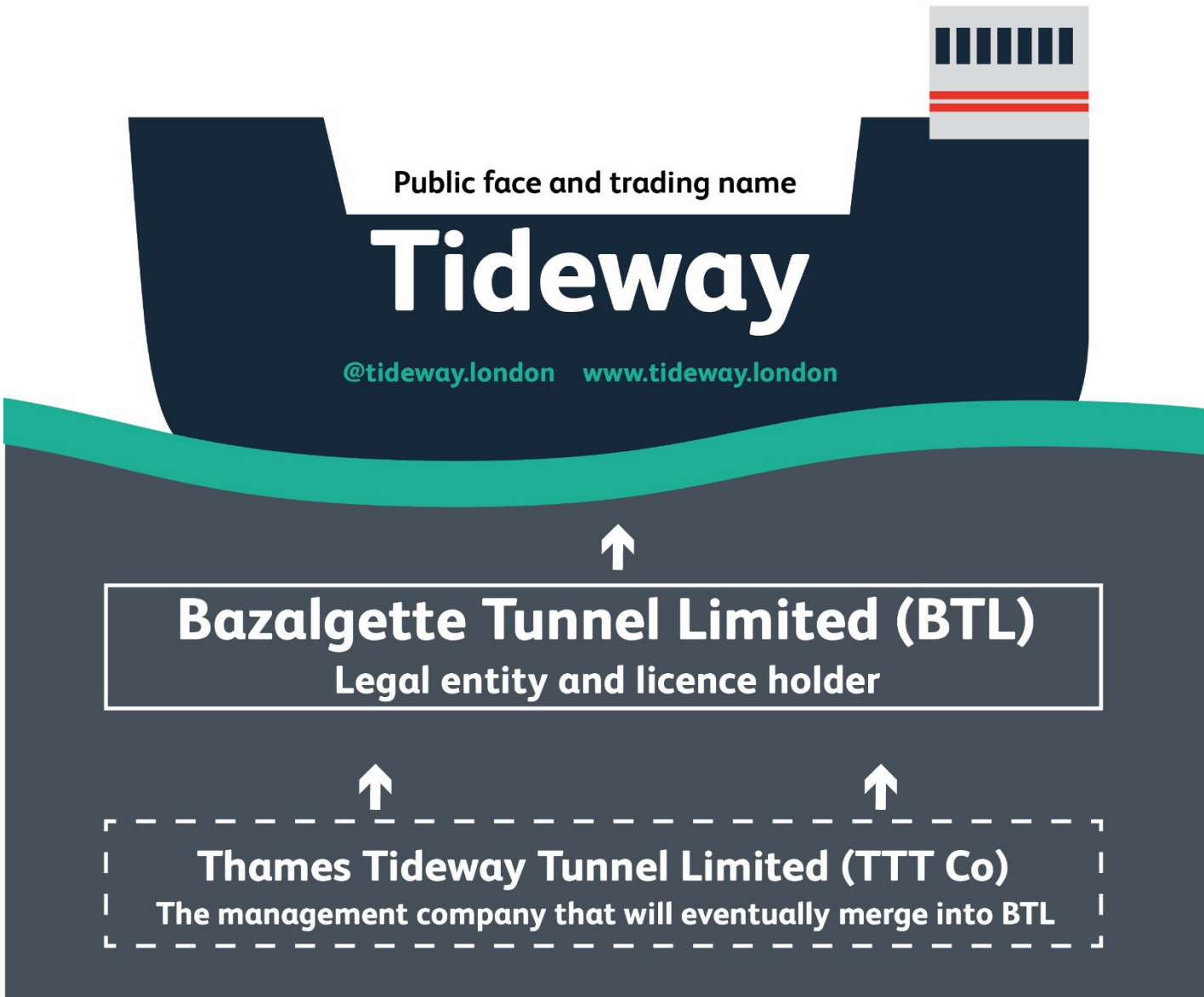
Thames Tideway Tunnel



Tunnel statistics



- Length: 25 kilometres
- Diameter: 7.2 metres
- Gradient: Falls one metre every 790 metres to be self-cleansing
- Volume: 1.6 million cubic metres (include Lee Tunnel)



Bazalgette Tunnel Limited (BTL)

The Infrastructure Provider is made up of the following investors:

- Allianz
- DIF
- Dalmore Capital Limited
- Amber Infrastructure Group

The investor group includes a significant proportion of UK pension funds through which over 1.7 million UK pensioners will have an indirect investment in Tideway.

Main Contractors

West



MORGAN SINDALL




Central



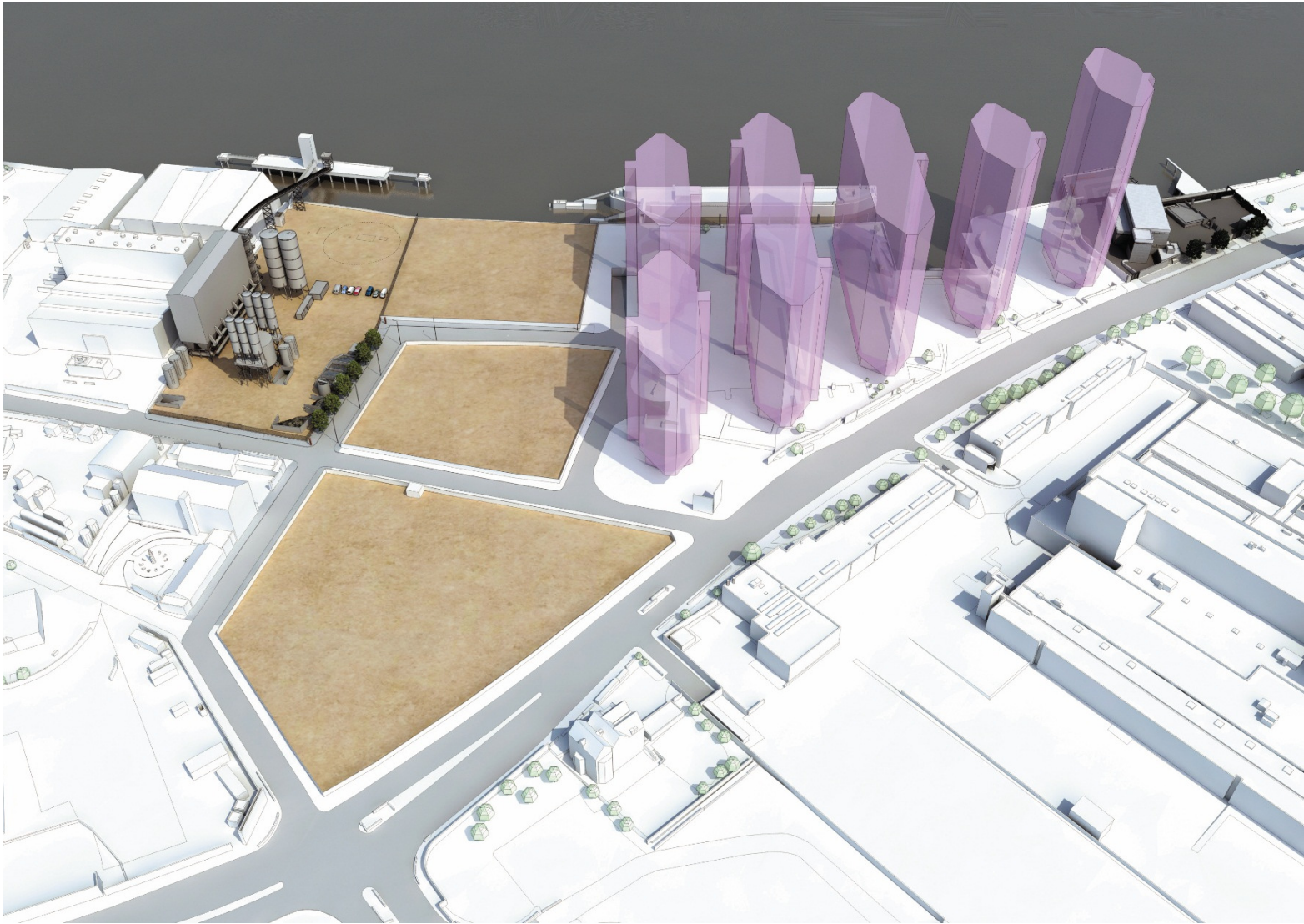
East



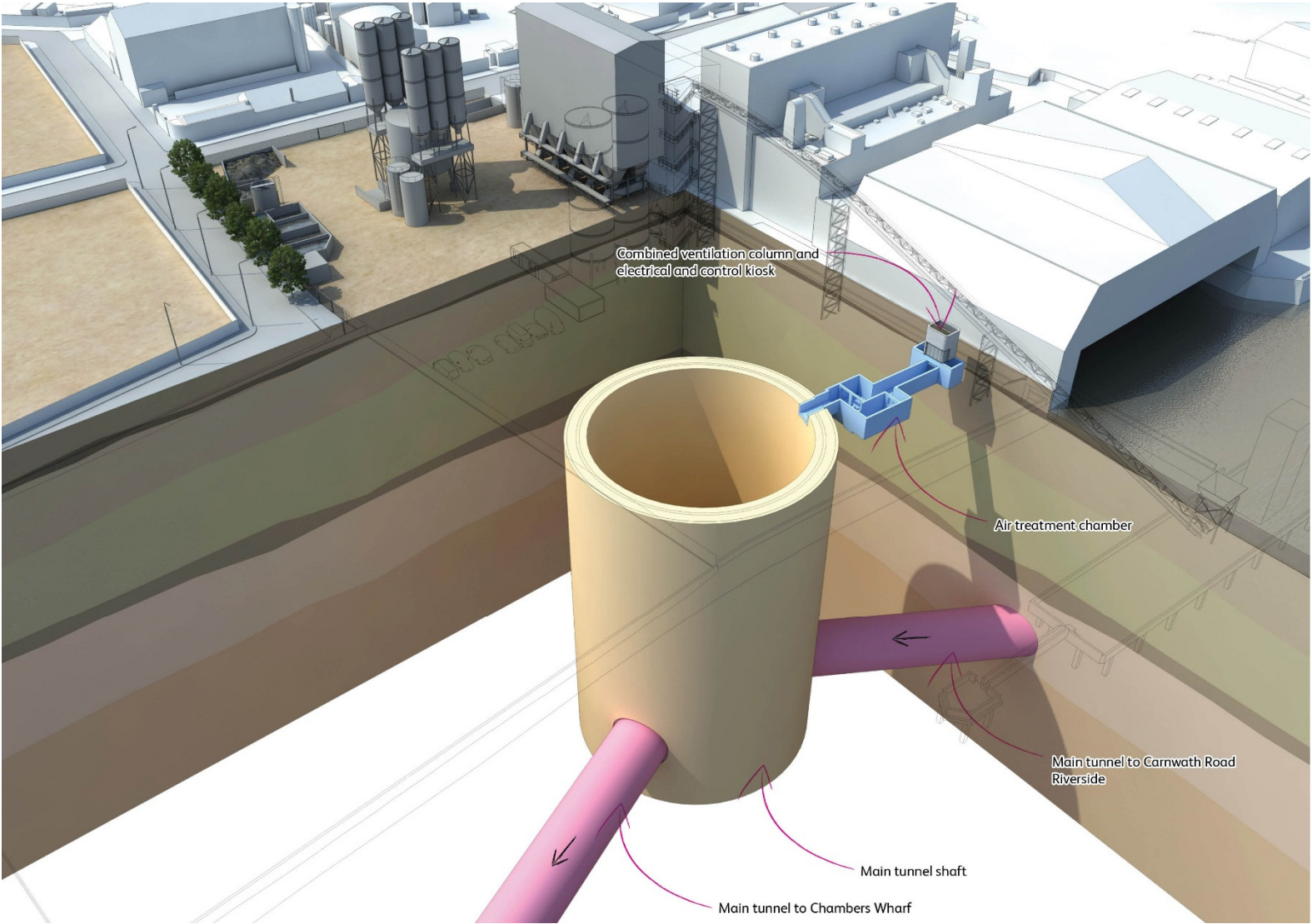
System Integrator



Kirtling Street Site



Kirtling Street - Below Ground



Commissioned Works: Kirtling Street Pilot



Commissioned Works: Kirtling Street Pilot



Kirtling Street Hoardings



Up-coming Early Works Activities

- 88 KIRTLING STREET: soft strip until end of this year and structural de-commissioning of building from early 2016
- 80 KIRTLING STREET: leased to Met Police for vehicle inspections
- 2a Battersea Park Road: with Murphy's for site set-up and preparations of new TBM sub-station delivery
- BROOKS COURT: upcoming fit-out for use as office by FLO

80 Kirtling Street



80 Kirtling Street (Axis security)



2A Battersea Park Road (Murphy's)



Inspire



