

Northern Line Extension

Battersea Site

Community Liaison Group

18.01.16

Delivering the Northern line extension with



MAYOR OF LONDON



Summary Update Oct – Jan 2016

- Concrete Diaphragm wall
- Bentonite Plant / Heavy plant on site
- Completion utilities diversion Battersea Park Rd
- New entrance completed. Signalised junction
- Mayoral Visit in November 2015
- Barge operations started
- On – going defect surveys and monitoring



Battersea Update Oct - Dec 2015



FERROVIAL AGROMAN
LAING O'ROURKE JV



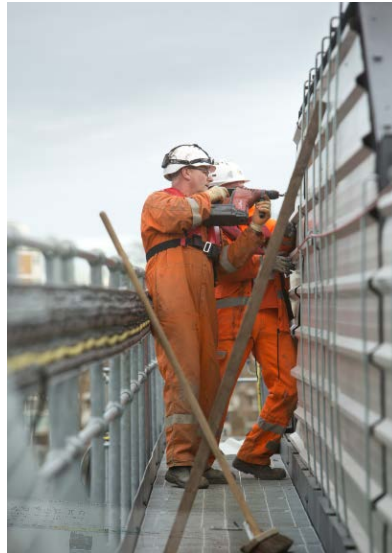
D-walling Animation



DIAPHRAGM WALL PANEL CONSTRUCTION REV A.wmv



Conveyor and Barge movement



- 13,000 tons of spoil removed by river in 2015
- CO2 reduction 45 tons
- Loading between 0700-1900
- 2015 approx.. 20 barges
- Targets 2016 circa 160,000 tons

Battersea Power Station design

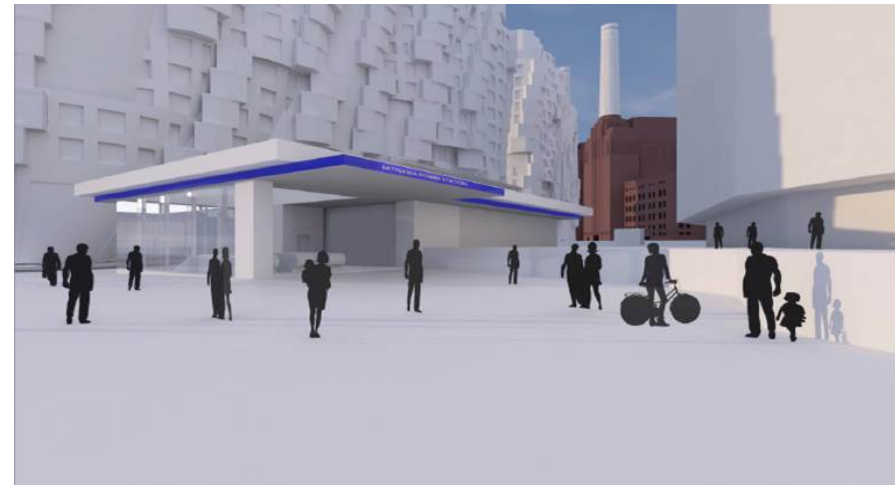
There has been further design work since the NLE Transport and Works Act Order (TWAO) was awarded in November 2014. These enhancements include separating the station entrance to provide a western and an eastern entrance at ground level.

A small section of the eastern entrance at Battersea Power Station falls outside the area consented for development by the NLE TWAO.

We have submitted an outline planning application to LB Wandsworth and are expecting determination in March 2016.

We will be holding a public exhibition at our Battersea worksite:

- Saturday 6 February 2016 10.00-14.00
- Tuesday 9 February 2016 16.00-19.00



November 2015--Artist's impression of the Battersea Power Station eastern station entrance.

Summary Update Oct – Jan 2016

- Completion of D Walling activities
- Start piling on the crossover box
- New site entrance operational
- Enabling works around main station box (West side of site)
- Sheet piling at station box
- Utilities diversionary works inside sites
- Barge operations continuing



Your Feedback

You Suggested	We Did
Opportunities for local businesses	LEAP group with local councils and job brokerages is progressing.
Concerns regarding delivery of information to Viridian and Savona	Contacts added and issue resolved.
Engagement Meetings	Flo have had two drop in sessions at Kennington area in September / Cycling event on October 15 with BPSDC
Integrated meetings with major developments in the area	NLE and Tideway are joining their CLG meetings. BPSDC on same date every 6 months
More engagement with locals	Site visits organised in November and January



Engagement Opportunities

- Drop in sessions
- Cycle Safety events
- Community Liaison Groups
- Site Tours for residents
- One to one meetings
- School and Youth Engagement
- Meet the buyer events



Ways to contact us

- It is important that calls are logged through the NLE 24/7 helpdesk on 0343 222 2424
- Email nle@tfl.gov.uk
- Regular Drop In sessions
- Please visit:

<https://tfl.gov.uk/northern-line-extension>



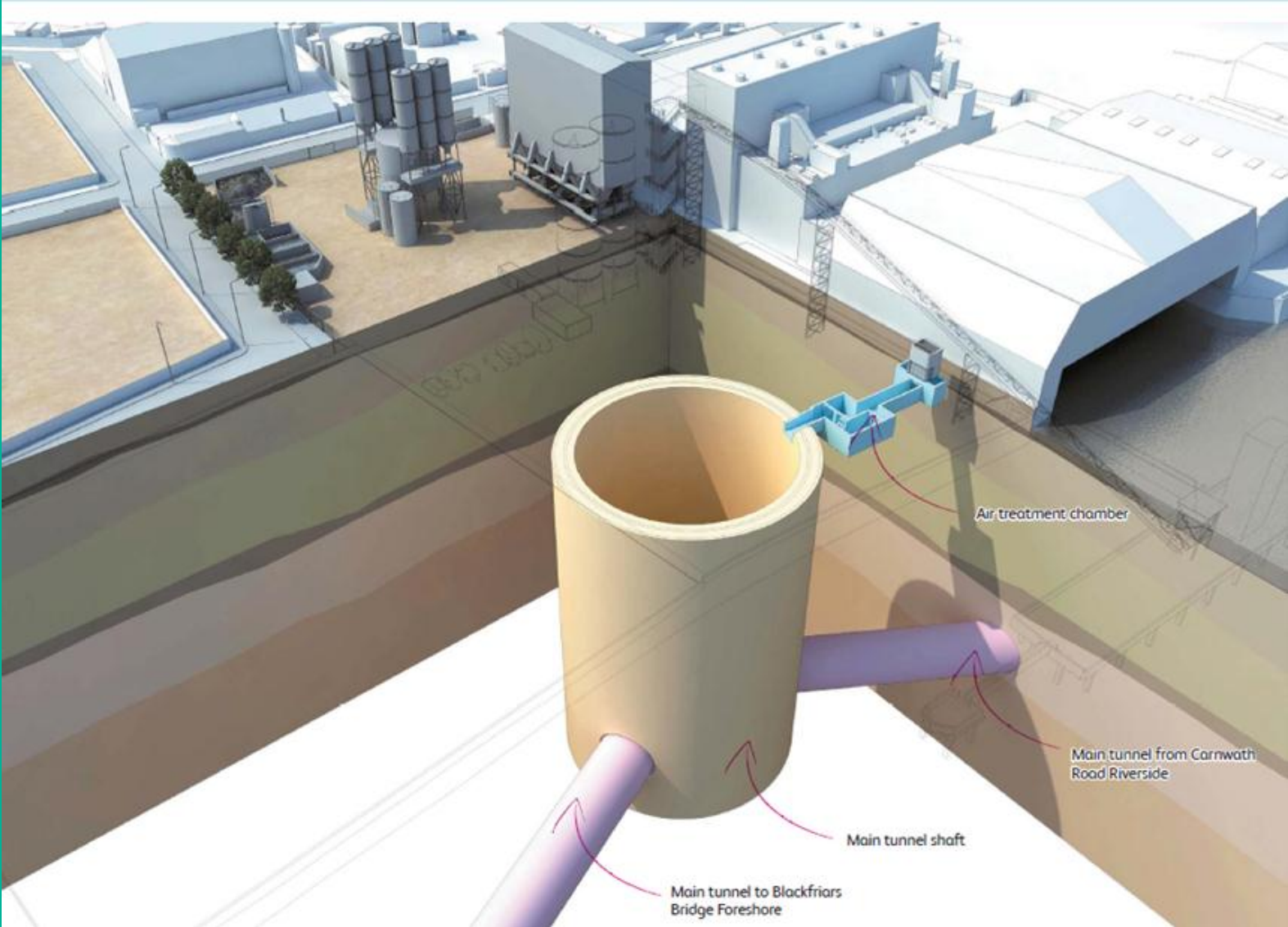
Tideway

Community Liaison Working Group

Kirtling Street site

18 January 2016

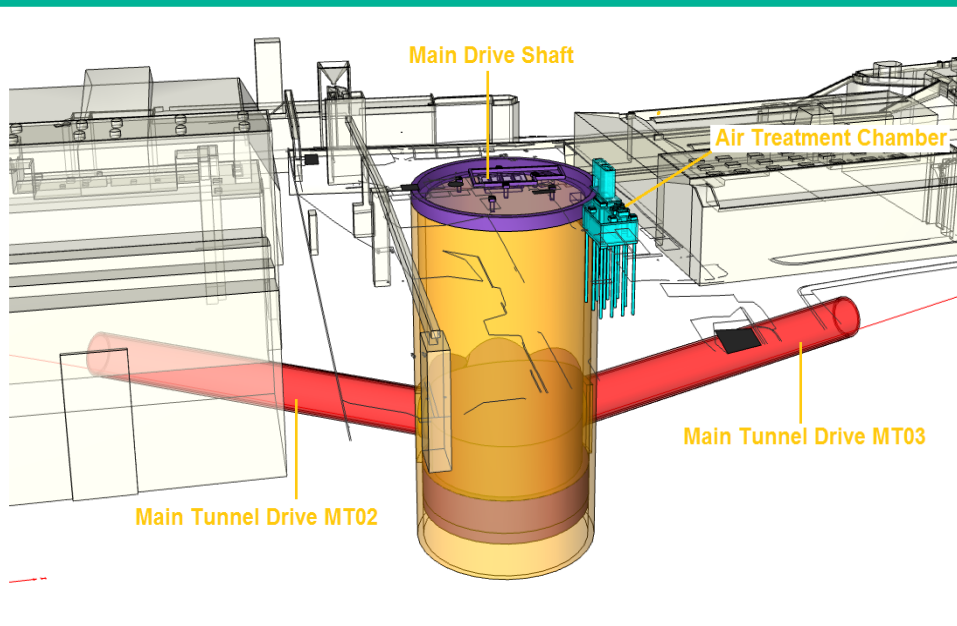
Overview



Construction plans and timetables

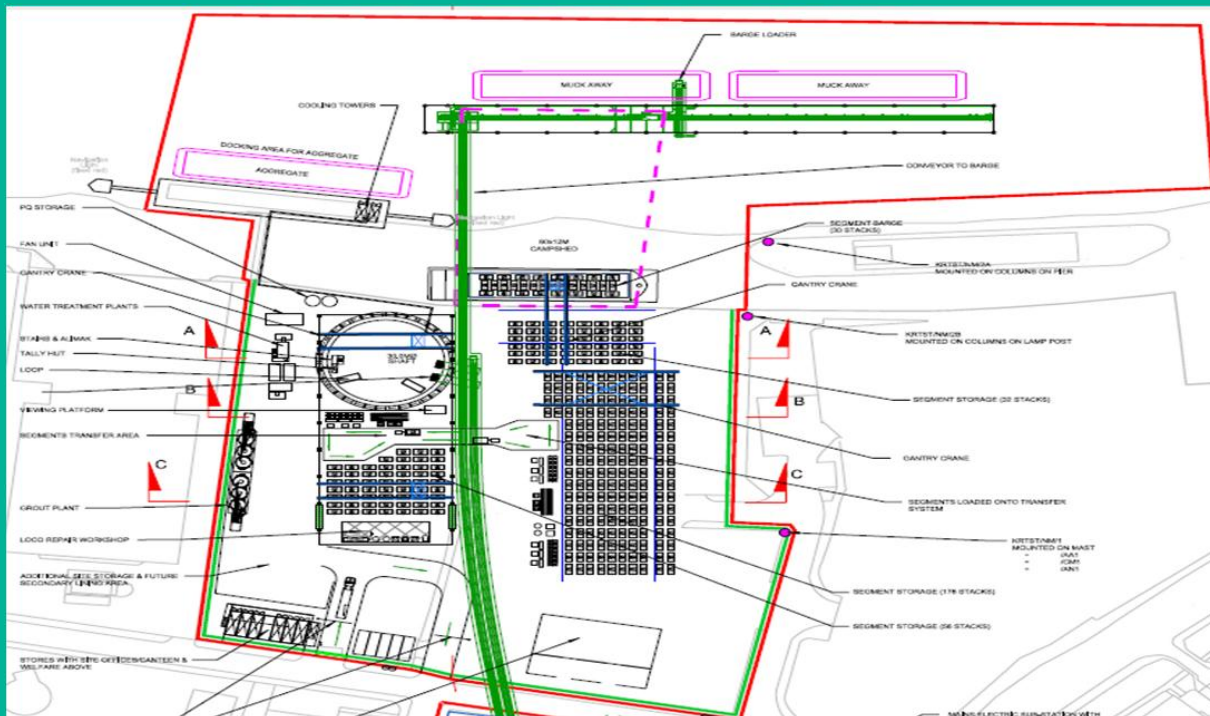
Activity	Jan-16	Feb-16	Mar-16	Apr-16	May-16	Jun-16	Jul-16	Aug-16	Sep-16	Oct-16	Nov-16	Dec-16
Renovate Brooks Court to form site offices												
Undertake Ground Investigation works												
Relocate 5 house boats within LLAU												
Commence site mobilisation for shaft construction												
Construct shaft diaphragm walls												
1. Sheet piling												
2. Excavate 6 m & install ring beam												
3. Guide wall construction												
4. D-wall construction												

◆ FLo baseline access date



Construction plans and timetables

Activity	Jan-16	Feb-16	Mar-16	Apr-16	May-16	Jun-16	Jul-16	Aug-16	Sep-16	Oct-16	Nov-16	Dec-16
River wall strengthening works												
Cemex demobilise												
Completion of 88 Kirtling Street demolition												
Stop up Kirtling Street												
Commence site establishment for tunnelling												
1. Piling for conveyor structure & gantry cranes												
2. Tower crane construction												
3. Erect land conveyor												
4. Begin erection of marine conveyor												



Health and safety

An uncompromising attitude to health and safety

- Three zeros commitment
- Removing HGVs from crowded London streets
- Additional safety initiatives to protect vulnerable road users
- 'EPIC' training for every worker on site

'STS' Programme

- Strategic Target (or stretch) Programme
- Designed to shave two years off the construction timetable while delivering all commitments
- Finish construction quicker, deliver benefit earlier
- Enabling more efficient construction at lower cost to bill payers
- Less disruption for residents
- Tunnel in use sooner: better for the river

Thames Water Preliminary Works

Preparing the site for works

- Trial trenches
- Boreholes
- Cabins
- Monitoring

Any questions?

Contact details:

- **General information helpline: 08000 30 80 80**
- **If you have a specific question call Mike Appleton: 0208 592 5533 or email michael.appleton@tideway.london**