

# Northern line extension

## MONTHLY UPDATE

January-February 2016

### Nine Elms

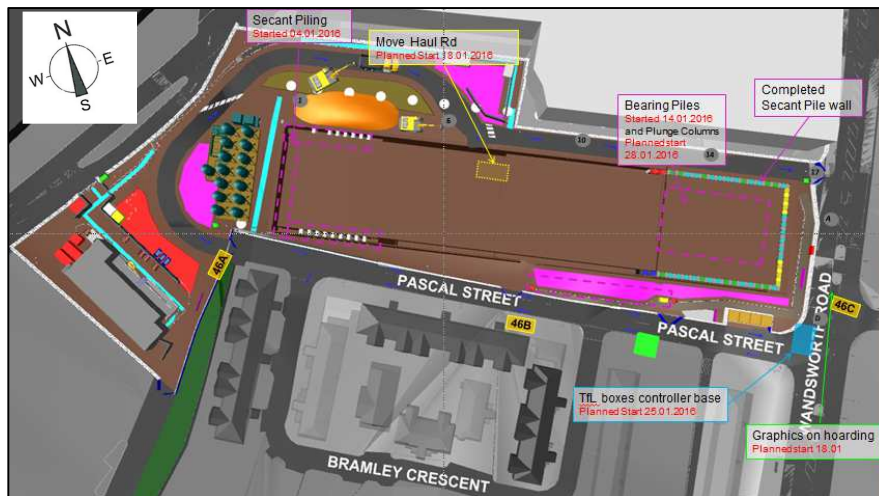
Dear neighbour,

As the Northern line extension (NLE) works continue to progress near you, we would like to bring you up-to-date on what has been achieved so far, and advise you of the main activities planned for the coming 4-8 weeks.

#### What has been completed:

Throughout the month of December, 17 piles were removed from the foundations of the former Covent House. This was essential to prevent any interference with planned construction works for the coming months.

On the eastern side of site (facing Wandsworth Road), the piling platform was completed which enables the piling rig to move smoothly around the site and the guide wall was also installed. This is a temporary structure which ensures the accurate alignment of the equipment required to 'guide' the secant piling activity which essentially creates a wall around the perimeter of the station box. (Please refer to the map below).



#### What is planned:

Throughout January, the same sequence of activities described above will now be carried out on the west side of site i.e. the completion of the construction of the guide wall before piling commences.

In addition, 30 28m plunge columns (steel beams), as illustrated below, will be lifted by crane and installed inside a number of the piles in the middle of the station box. Plunge columns are used in basement excavation and will assist in supporting the over site development. This activity will start at the end of January and will complete by August.

Please note that due to the size of the steel plunge columns and accompanying crane, deliveries need to be carried out outside of core working hours in accordance with the highways authorities regulation and as instructed by the Metropolitan Police. We will advise the community when this is due to take place.

[nle@tfl.gov.uk](mailto:nle@tfl.gov.uk)

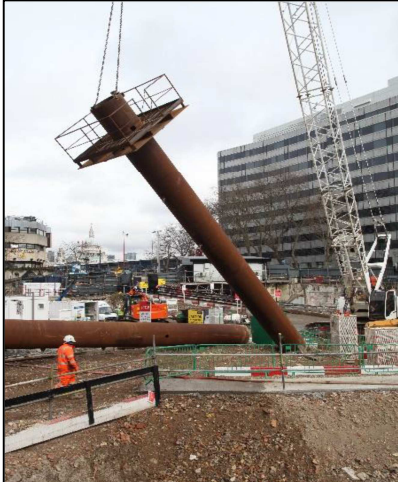
0343 222 2424

[tfl.gov.uk/northern-line-extension](http://tfl.gov.uk/northern-line-extension)

Ref: FLO-N203-2360000-COM-NTF-00008

PLEASE TURN OVER

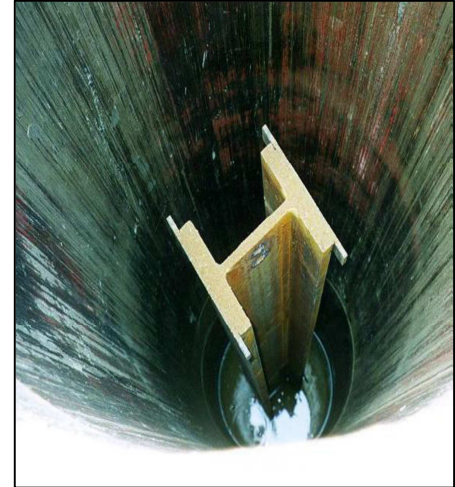
Concrete deliveries will be made by mixer truck for all piling works and other site activities. We will endeavour to ensure that these operations are carried out during our core working hours. It is possible however, as we have advised you in the past, that due to unforeseen circumstances, these operations may continue beyond 1800 on Mondays to Fridays or beyond 1300 on Saturdays as some activities must be carried out in one continuous activity. We will continue to let you know in advance when practicably possible.



An example of plunge column lifting and installation



Plunge column installation



A plunge column embedded in concrete at depth

#### Our core hours :

**0800 to 1800 Mondays to Fridays and 0800 to 1300 on Saturday**

You may notice some utilities works being carried out on the pavement opposite site (Wandsworth Road) from 25 January. The pavement slabs will be lifted and, should hand-held breakers be required, acoustic blankets will be used to mitigate any noise. We expect these works to take approximately 2 weeks to complete.

In February, the TfL traffic light control box will be relocated from our site (as it is currently in the line of construction) to the corner of Pascal Street. These works will take approximately 7 days to complete during which the Pascal Street/Wandsworth Road junction will be controlled by temporary lights.

Following the completion of secant piling on the east of site, the guide wall is due to be removed at the end of February. In order to effectively remove the wall, drilling is undertaken to split the guide wall into sections. These pieces will then be pulled away from the secant wall using the bucket attachment of an excavator and loaded onto a flatbed truck to be removed from site and recycled. As this operation may produce some noise, acoustic shielding will be used in mitigation and regular dust and noise monitoring will be undertaken.

Your feedback is important to us. Please do get in touch if you have any questions about the works or would like to attend the next Community Liaison Group meeting taking place on 25 January 19:00-20.30 at the Bolney Meadow Community Centre, 31 Bolney Street

**If you have any concerns or queries, please contact us at [nle@tfl.gov.uk](mailto:nle@tfl.gov.uk)**

**or call our 24/7 helpdesk on 0343 222 2424**

[nle@tfl.gov.uk](mailto:nle@tfl.gov.uk)

0343 222 2424

[tfl.gov.uk/northern-line-extension](http://tfl.gov.uk/northern-line-extension)