

# Northern Line Extension

## Nine Elms

## CLG Presentation

## 04 February 2020

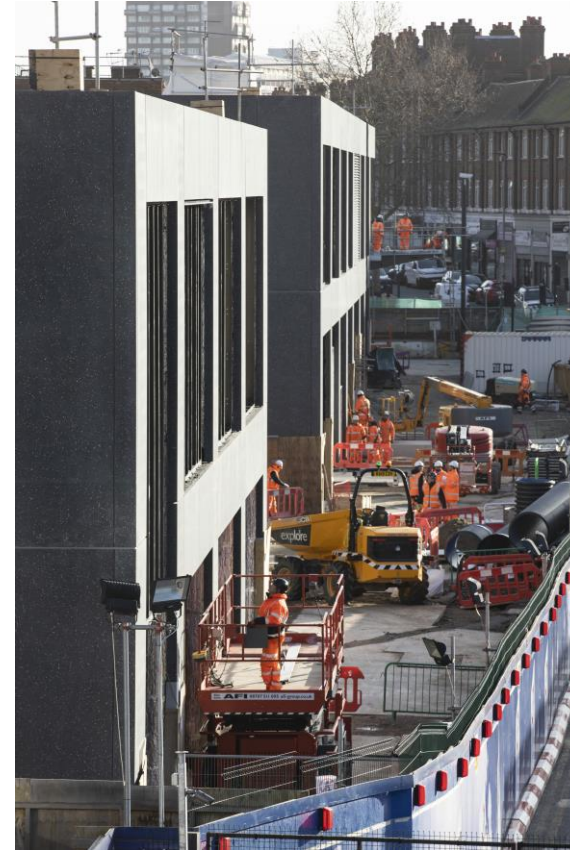
#	Action	Update
1	CA will speak to relevant contacts regarding the availability of more soil for the community garden	FLO has secured a final donation of top soil from one of its suppliers. Delivery expected within a few weeks.
2	Cllr Dr Hashi will chase for a response from Council regarding the lack of Christmas lights in Wandsworth Road	A whole variety of Christmas illuminations were displayed across the borough in Wandsworth, including 'Light up Nine Elms'. 13-21 December 2019 – Beautifully animated projections of elm trees on nine buildings.
3	TfL to provide details of completed and planned community engagement on the over-site development	<ul style="list-style-type: none"> <li>• 11/12 October – Drop-ins at Mursell Community Hall</li> <li>• Also in October - 96 address visited in door knocking activity plus 14 hours of face to face briefings with stakeholders</li> </ul> <p>Upcoming:</p> <ol style="list-style-type: none"> <li>1. 16:00 - 20:00 Thursday 6 February at Wheatsheaf Community Hall, Wheatsheaf Lane, London, SW8 2UP</li> <li>2. 10:00 - 14:00 Saturday 8 February at Wyvil Primary School, South Lambeth Road, London, SW8 2TJ</li> <li>3. Aim is to submit our planning application in Spring 2020</li> </ol>
4	TfL to consider BL's enquiry regarding the need for gardeners for Pascal Square	The public square will be landscaped and maintained by Grainger plc who are the long-term providers of the rental homes. They'll listen to any ideas from the local community, and propose ways to work together in future if they are able to.

# Dec'19 – Jan'20

## External works



FERROVIAL AGROMAN  
LAING O'ROURKE JV



Pascal Square works commenced  
Entrance canopy and façade ongoing



# Dec'19 – Jan'20

## Ticket Hall



FERROVIAL AGROMAN  
LAING O'ROURKE JV



Top cladding (GFRC) completed  
Escalators ongoing  
Tubular ceiling completed

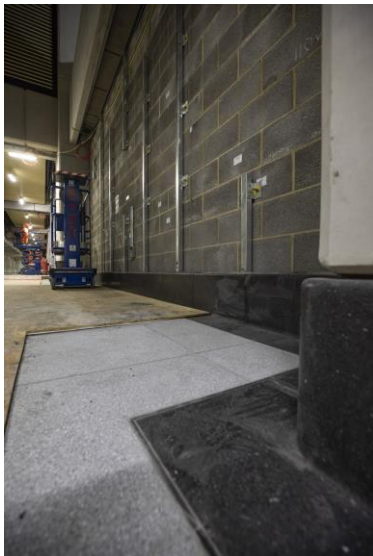


# Dec'19 – Jan'20

## Platform Area



FERROVIAL AGROMAN  
LAING O'ROURKE JV



Tiling ongoing

Cladding and roundels  
installation



# Dec'19 – Jan'20

M&E works



Escalator works



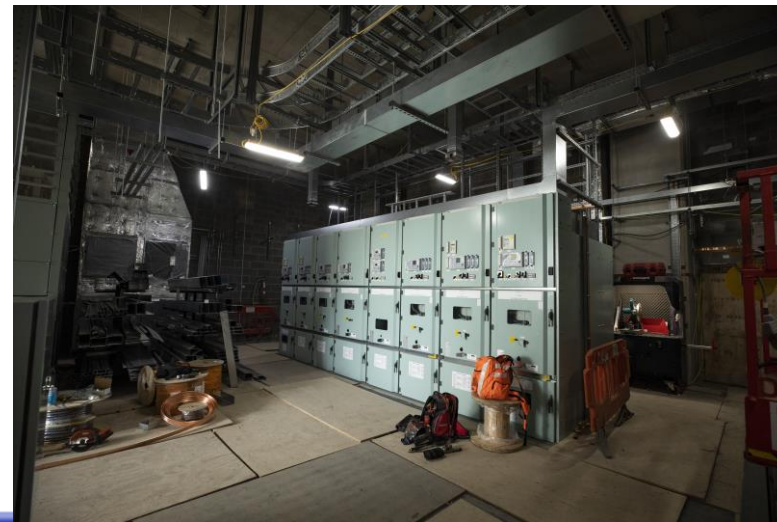
Electrical works



Ventilation works

# Feb'20 – April'20

Mechanical and electrical works on going  
Escalators physical works completed



# Feb'20 – April'20



FERROVIAL AGROMAN  
LAING O'ROURKE JV

- Arch 42 enabling works
- Façade completed
- Metal cladding to commence (platform)
- Tiling of Ticket Hall to commence
- Landscaping works to commence





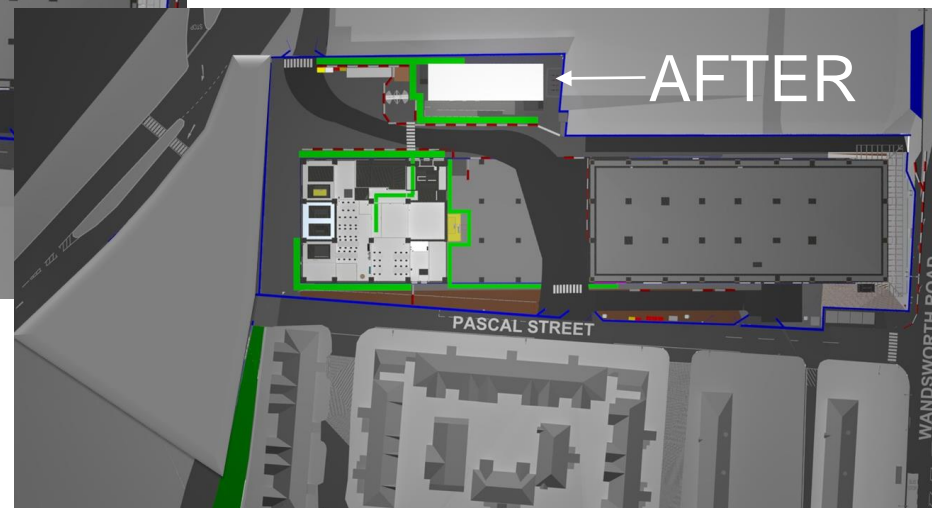
# Feb'20 – April'20

Office cabins relocation

Scheduled for the weekend of 6 March

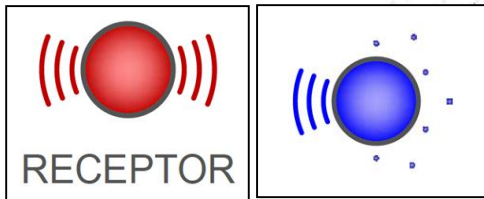
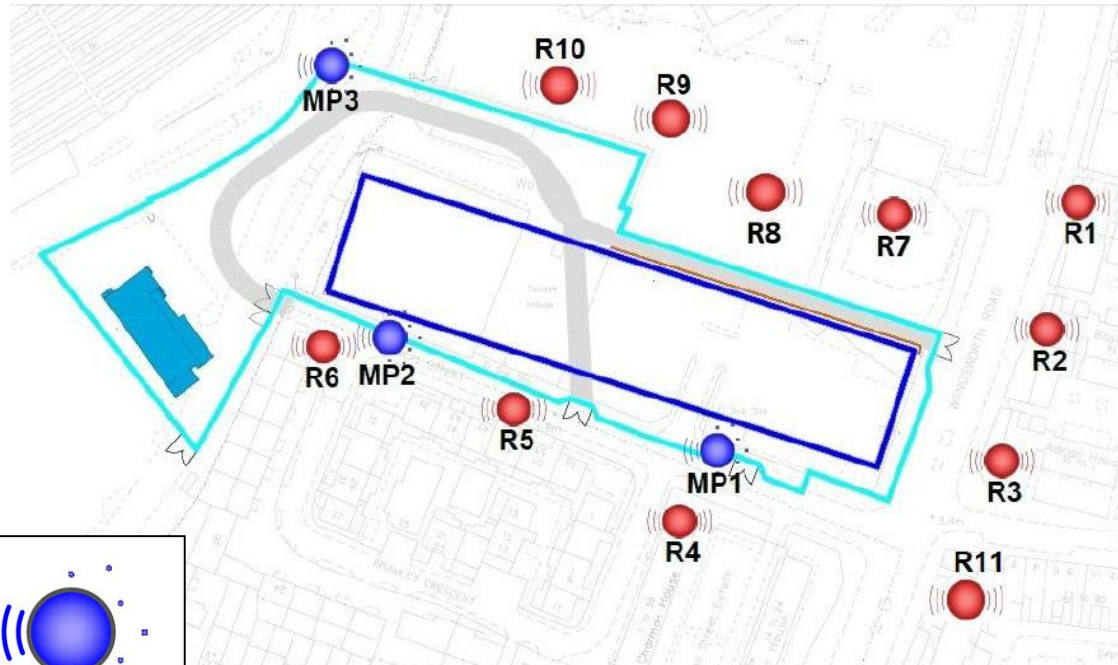
72 hour operation (days and nights)

Return the land to Covent Garden Market

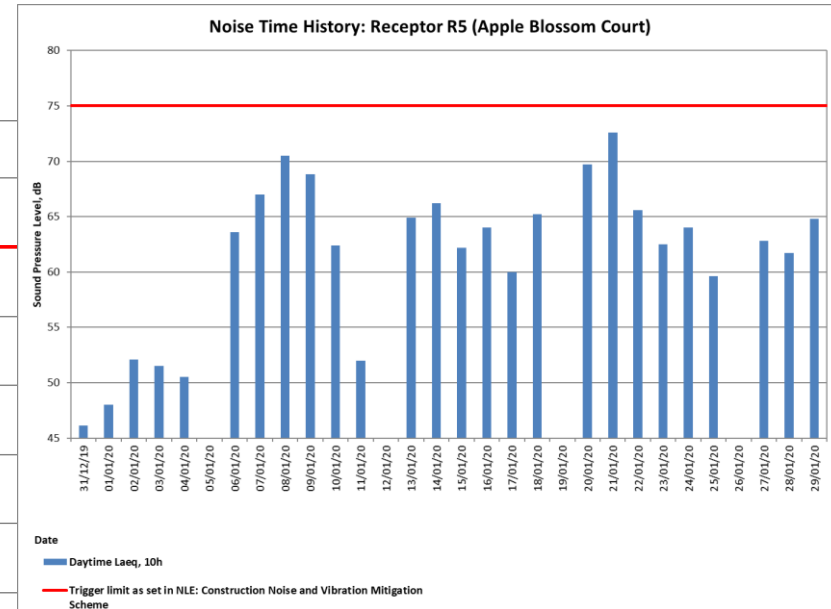
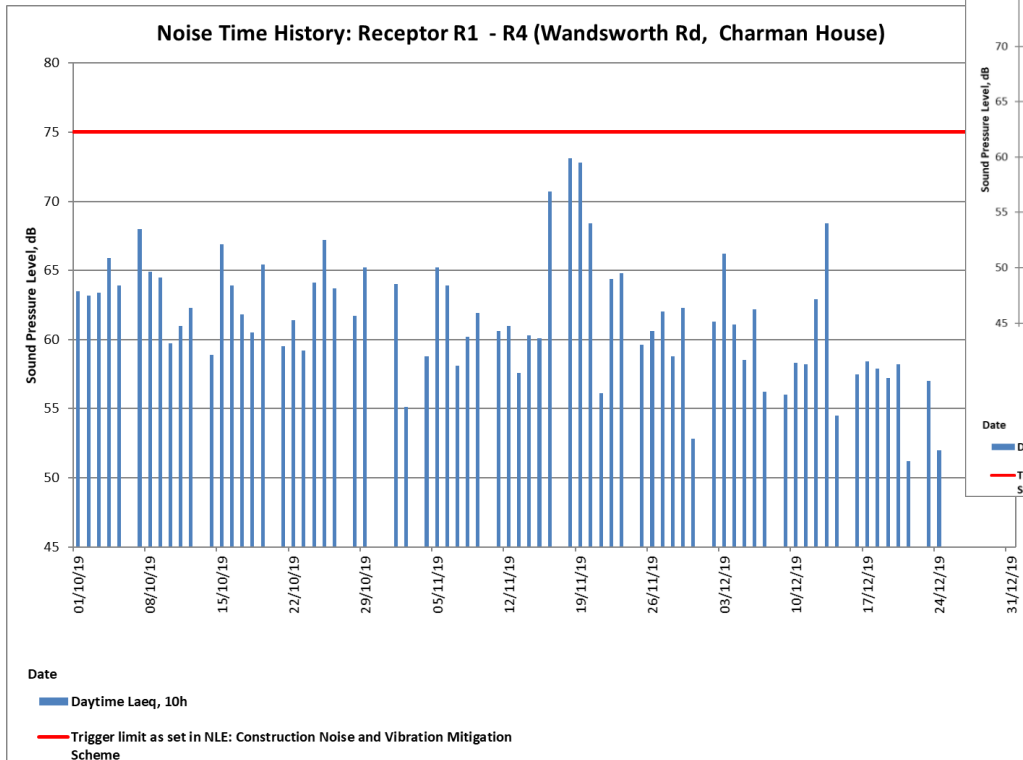


# Environmental Monitoring Locations

## Noise monitoring stations and sensitive receptors

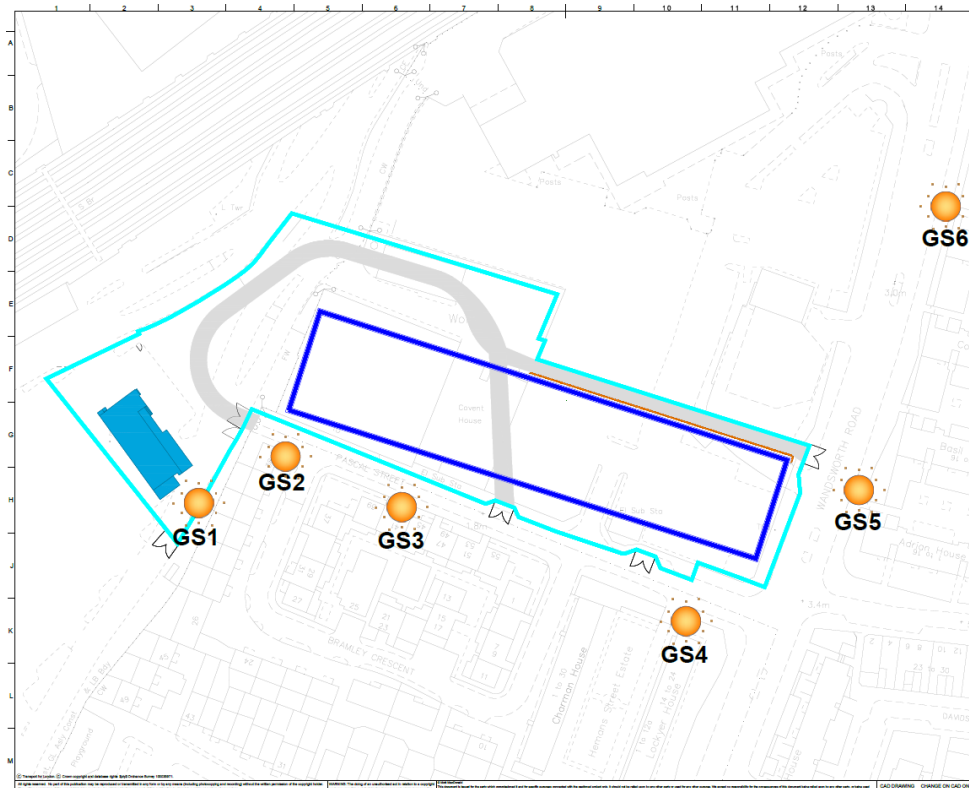


# Construction Noise Monitoring



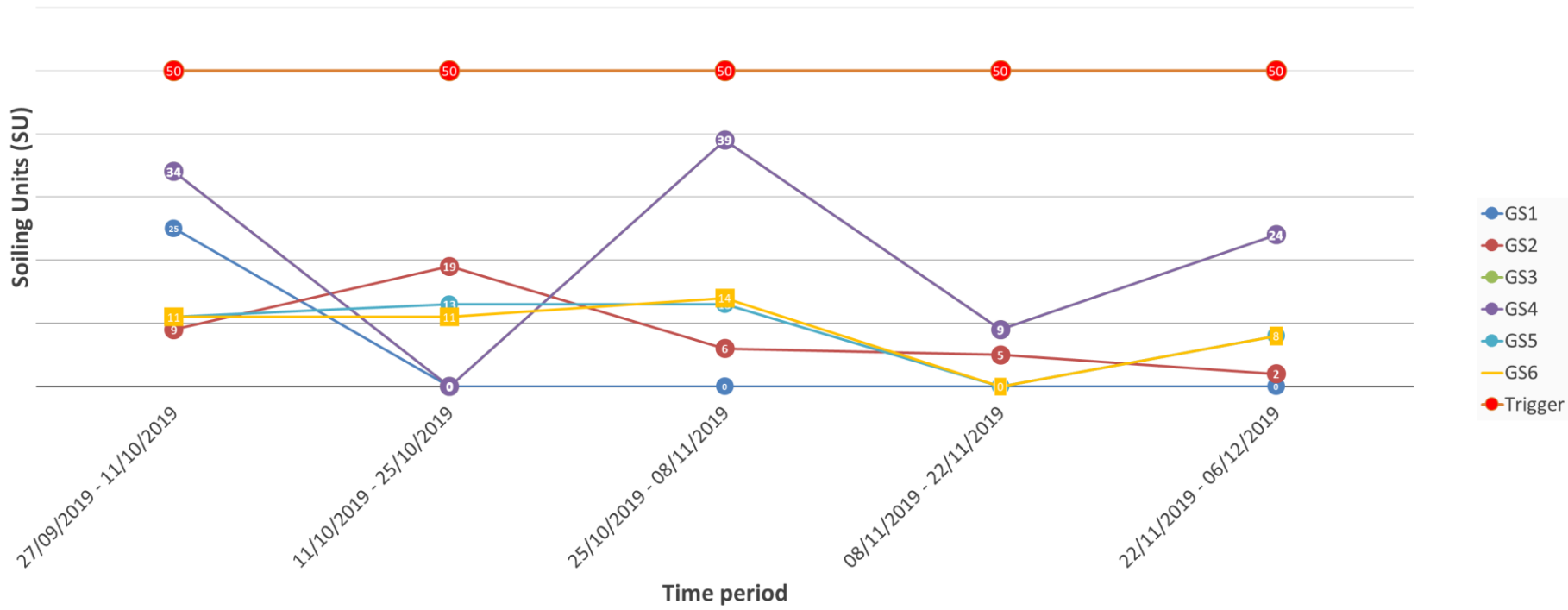
# Environmental Monitoring Locations

## Dust monitoring stations and sensitive receptors



UNATTENDED DUST MONITORING POSITION (GLASS SIDE)

### NLE - Nine Elms - Fortnightly Passive AQ monitoring



# Enquiries and complaints

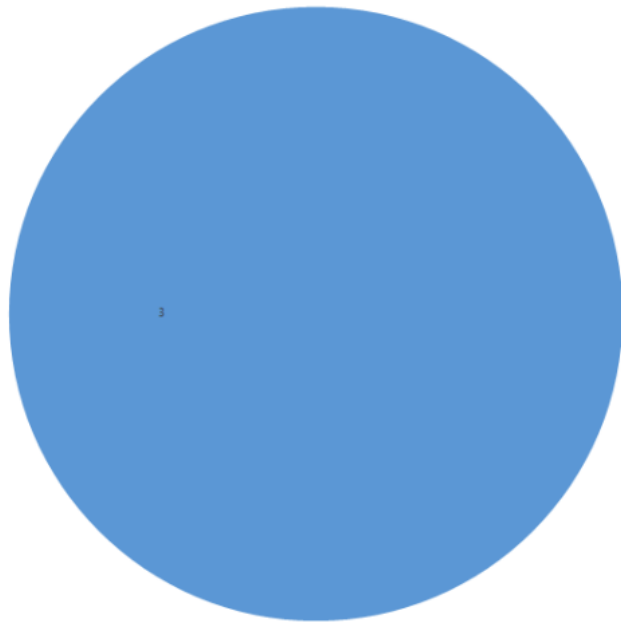


Stats for Nine Elms between 19 November 2019 and 3 February 2020

## Case Status:

**Total: 3 cases (enquiries)**

- Active: 0 (0%)
- Resolved: 3 (100%)



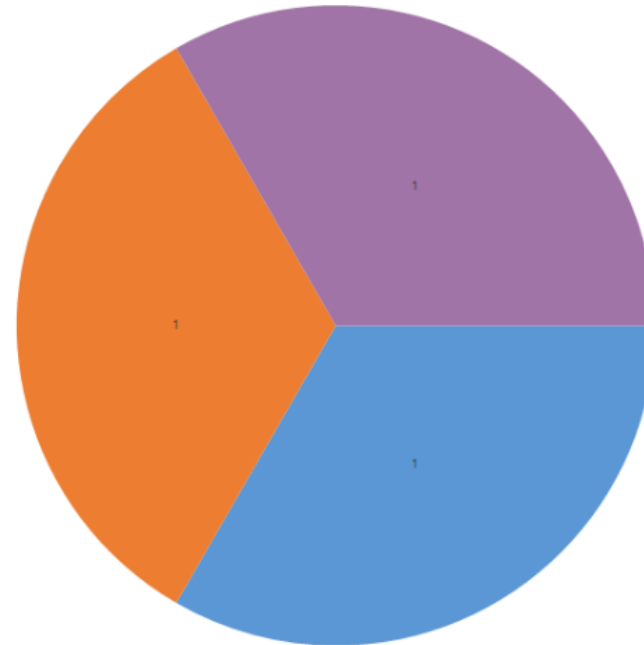
■ Enquiry

## Enquiry Type:

### Total:

**3 enquiries**

- General Vesting Declaration: 1 (33.3%)
- Miscellaneous: 1 (33.3%)
- Monitoring: 1 (33.3%)



■ General Vesting Declaration (GVD) ■ Miscellaneous ■ Monitoring



# Community Engagement and NLE Skills and Employment



2 students completed **work experience** on the project from **Sacred Heart**.

Supported a business breakfast event at **Sacred Heart** (Southwark)

Attended a meet the professionals event at **St Martin in the Fields** (Lambeth)

Careers carousel at **St Saviours & St Olaves** (Southwark)

1 Dragons den activity – Landsdowne school (Lambeth)



# Ways to contact

- It is important that calls are logged through the NLE helpdesk on 0343 222 2424 (Option 1)
- Email [nle@tfl.gov.uk](mailto:nle@tfl.gov.uk)
- <https://tfl.gov.uk/northern-line-extension>
- Drop In sessions