

Northern Line Extension

PROGRESS UPDATE

March 2021

Battersea Power Station

Dear Neighbours,

We hope that you and your families are well. We know it's been a difficult start to the year for many, but hopefully with the arrival of spring we can start to feel a sense of optimism about the months ahead. Whilst much of the country has been confined to their homes this winter, our teams have continued their fantastic efforts on site. Over Christmas, we achieved a major milestone, successfully completing the first test-run of a Northern line train along the full length of the route. We remain focused on an autumn opening date for the new extension.



At Battersea Power Station, the main entrance to the Underground is now really starting to take shape. From the inside the bronze roof appears to float above the escalators down to the ticket hall level and the glazed rooflight floods the space with light. Whilst the internals of the entrance are well developed, the focus now is on finishing the exterior of the complex roof.

Below ground, works continue with the premises fit-out and completion of the mechanical, electrical and power aspects of the station. We'll be testing and commissioning the station

nle@tfl.gov.uk

0343 222 2424 (option 1)

tfl.gov.uk/northern-line-extension

equipment components over the coming months, including the tunnel ventilation system. Most of these operations will be conducted at night and we don't expect testing to be audible above ground.

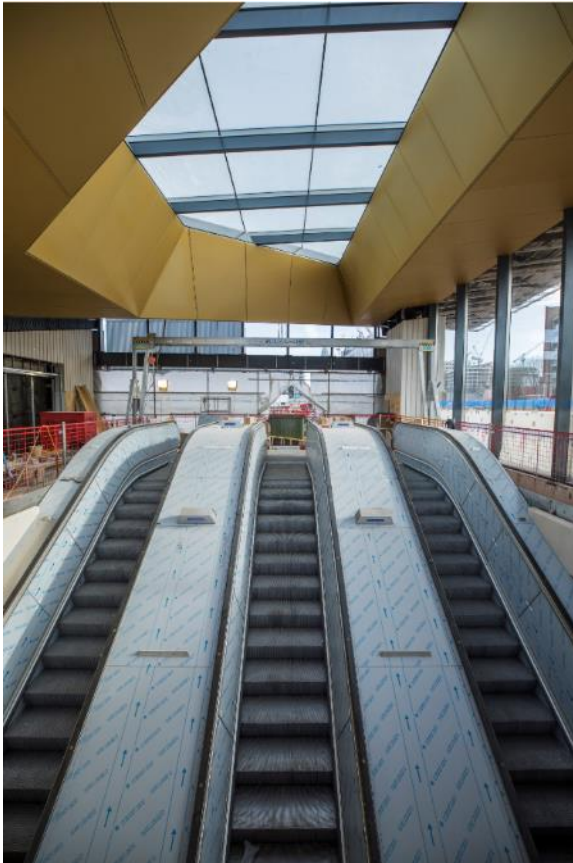


Figure 1 - Battersea main entrance

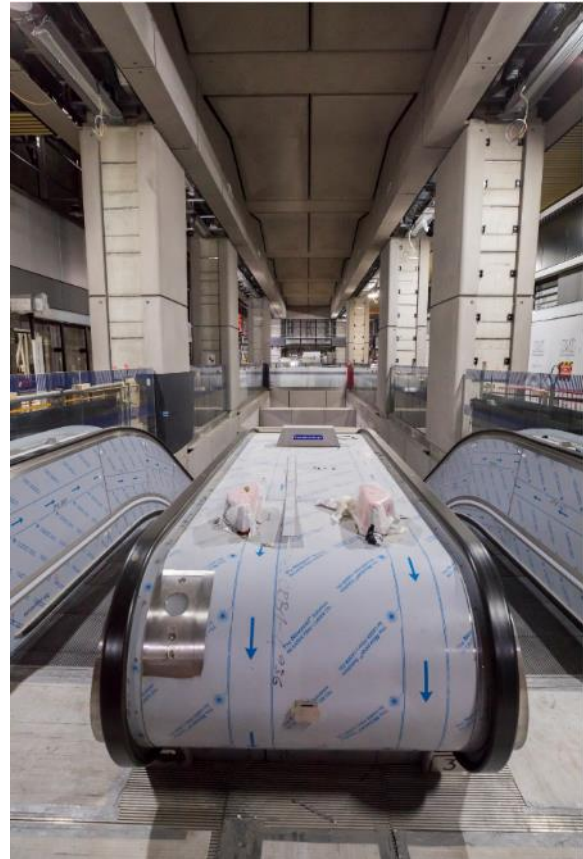


Figure 2 - Battersea ticket hall level

At surface level, our footprint progressively reduces as we hand over parts of the site to Battersea Power Station Development Company.

If you are interested in taking part in a virtual Community Liaison Group one evening in May, please let us know by the end of March, emailing nle@tfl.gov.uk with the subject line BATTERSEA VIRTUAL CLG. We will respond with further information in April.

The Northern Line Extension helpline remains open 24/7. Please do get in touch via the contact details below should you have any queries or questions.

Our core working hours are 08:00 to 18:00 Monday to Friday and 08.00 to 13.00 on Saturday. For certain activities on the surface, we may also work until 21.00. Works underground will take place 24/7.