

# Northern Line Extension

## PROGRESS UPDATE

November 2018-January 2019

### NLE Nine Elms Station

Thank you for your patience whilst we continue with the Northern Line Extension (NLE) works near you. We would like to update you on where we are and what is planned for the next quarter.

#### What has been completed:

Since August, we have seen the site transform below ground as the majority of the structural activities are now complete at basement level 2 – 4. These include the construction of the columns, walls, headwalls (the surface area around the tunnel entrances) and the future station platform. Approximately 600 precast concrete elements (slabs and walls) have been placed in situ to form the future platform. Blockwork has commenced at basement level -2 to form the rooms and corridors of the station. (See Figures 1 and 2 below).



Fig.1 The platform at Nine Elms Station with the tunnel entrance in the distance complete

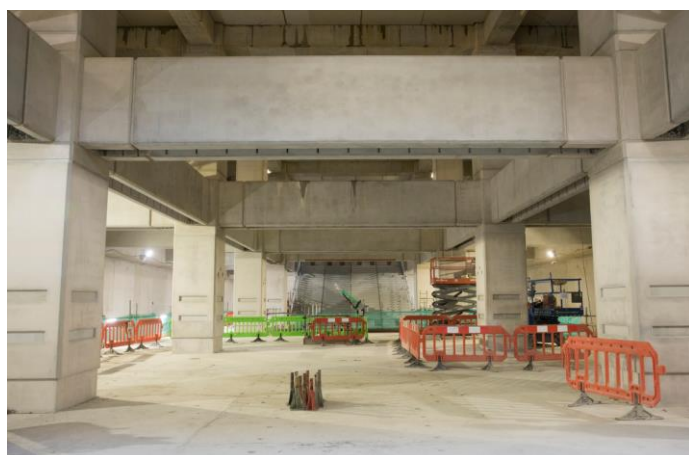


Fig.2 Completed columns and walls with precast stairs in the distance

September saw the start of the east superstructure works. This is the construction of the two storey building that will house the future ticket hall entrance to the station. The columns can now be seen emerging from ground level at the Wandsworth Road end of site. Five out of 36 columns have been constructed so far and the building will reach a total height of 10.5m.

More than half a kilometre of track has now been installed within the northbound tunnel, heading in the direction of Kennington. Once this section is complete, the process will be repeated in the southbound tunnel. See Fig. 3 overleaf.

#### What is planned:

Moving through November, the team will progress the works on the east superstructure which will look similar to the digital image you see overleaf. The gantry crane, which has served as the main lifting apparatus throughout the construction of the station box will be dismantled at the end of the month as the civil works below ground near completion. The remainder of the works on the lower levels will entail blockwork, the

application of 'screed', a layer of concrete added to the structural slabs to achieve the final architectural finish at each level plus MEP (mechanical, electrical and plumbing) fit out.



Fig. 3 Track Installation from the NLE Nine Elms site to the Kennington site

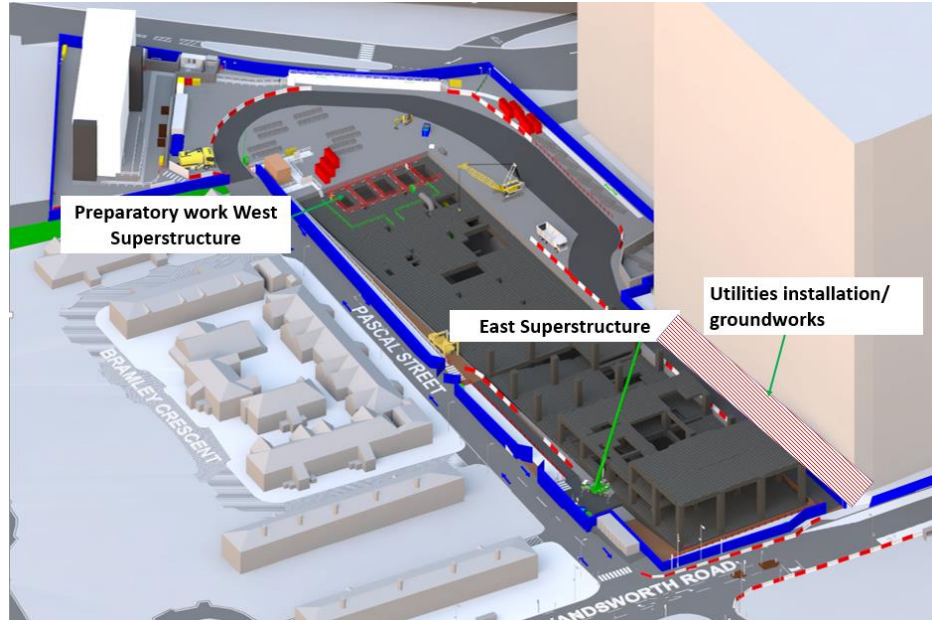


Fig.4 Digital map of the Nine Elms site highlighting key activities

Enabling ground works for utilities (highlighted in the map above) will begin in December. This will involve the demolition of redundant concrete elements in the ground and the installation of drainage and utilities (electrical, communications, etc.). Please note all break out works will take place during core working hours and this activity is currently scheduled to take place periodically over two months.

The construction of the west superstructure will begin at the end of December. Similarly to the phase of works taking place in the east, this will involve column installation primarily, followed by the construction of the mezzanine and roof slabs. This building will be used to house retail units and mechanical rooms in the future.

**Please note, the NLE Nine Elms site will be closed for Christmas from 21 December until 02 January 2019.**

Our core working hours are **08:00 to 18:00 Monday to Friday** and **08:00 to 13:00 Saturdays** on the surface. For all activities related to fit-out, lifting and deliveries, we may also use the approved extended hours of **07:00 to 21:00 Monday to Friday** and **07:00 to 19:00 on Saturdays**. Concrete pours may commence from **06:00 on weekdays only**

If you have any concerns or queries, please contact us at [nle@tfl.gov.uk](mailto:nle@tfl.gov.uk) or

call our 24/7 Helpline on **0343 222 2424 (Option 1)**.