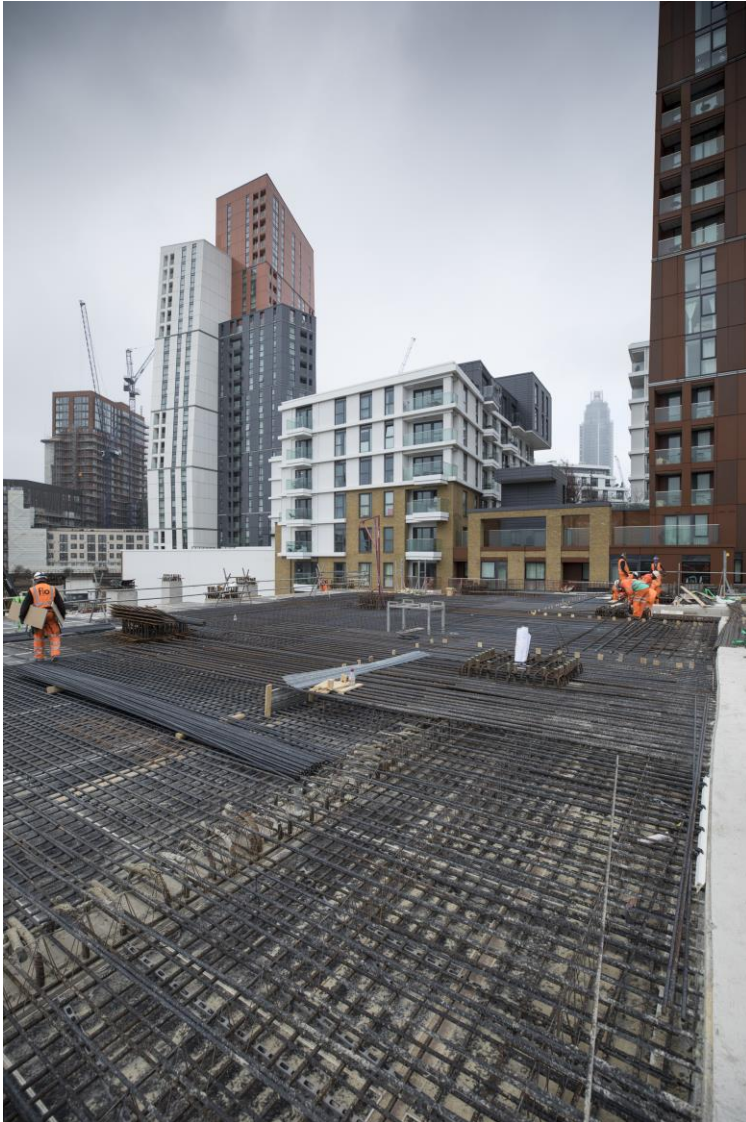


Jan '19 – Mar '19



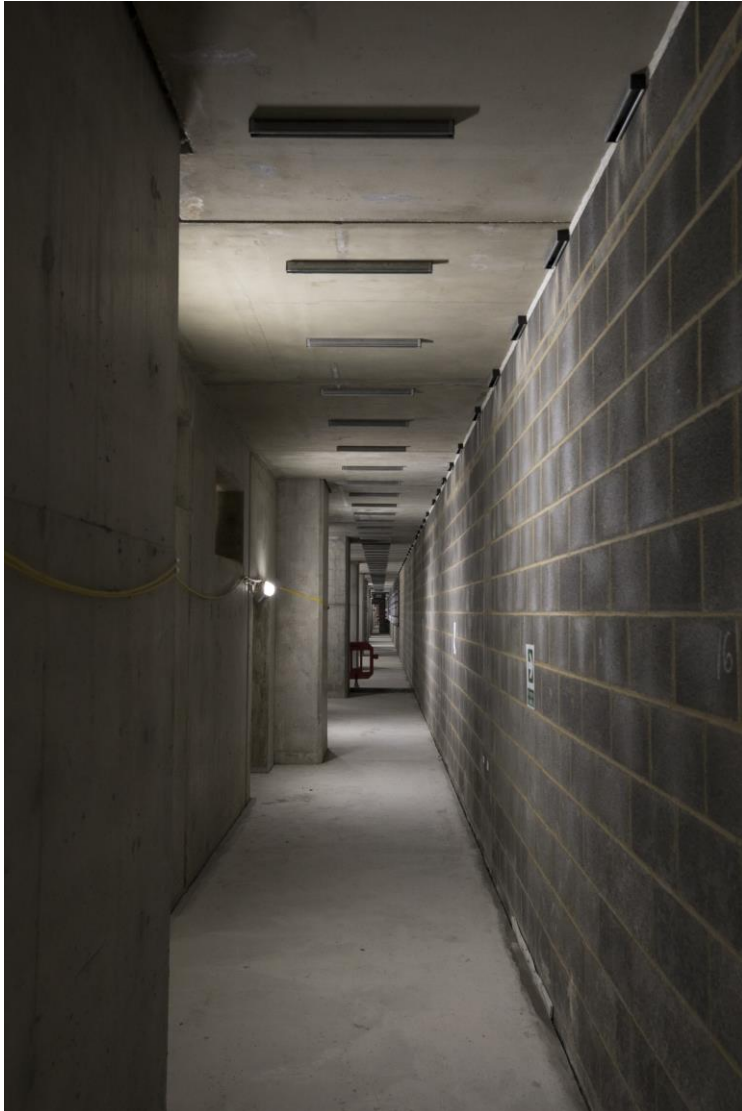
FERROVIAL AGROMAN
LAING O'ROURKE JV



East superstructure finished
West superstructure under way



Jan '19 – Mar '19

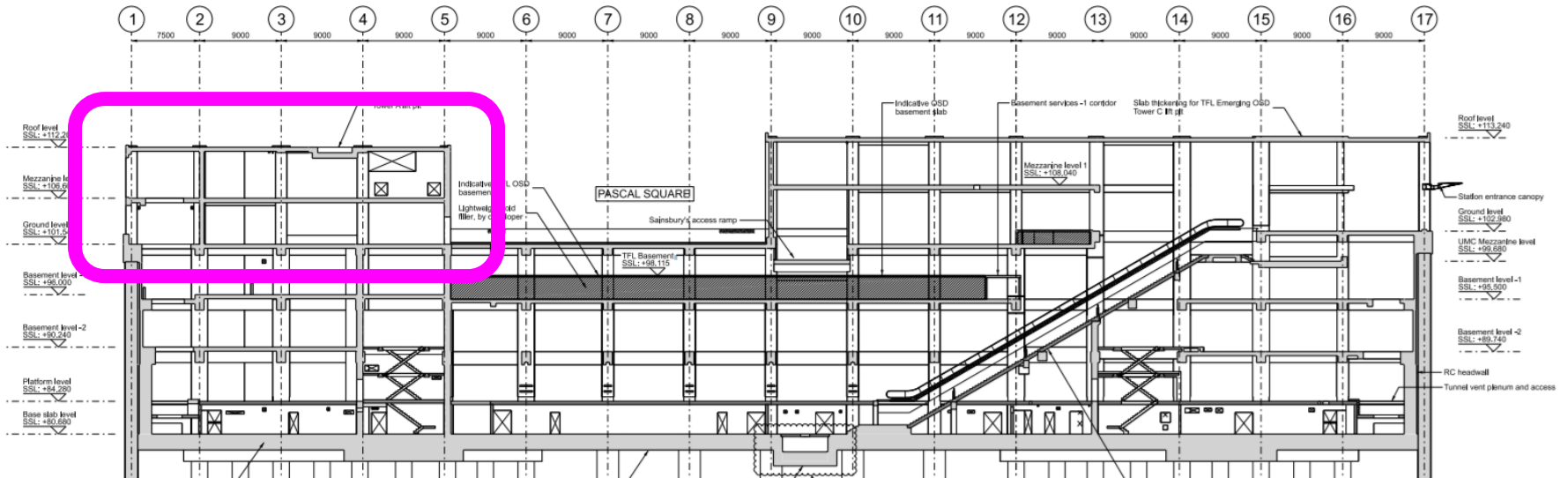


Blockwork below ground
completed 85%
Blockwork above ground
recently started
Painting works started

April '19 – June '19



FERROVIAL AGROMAN
LAING O'ROURKE JV



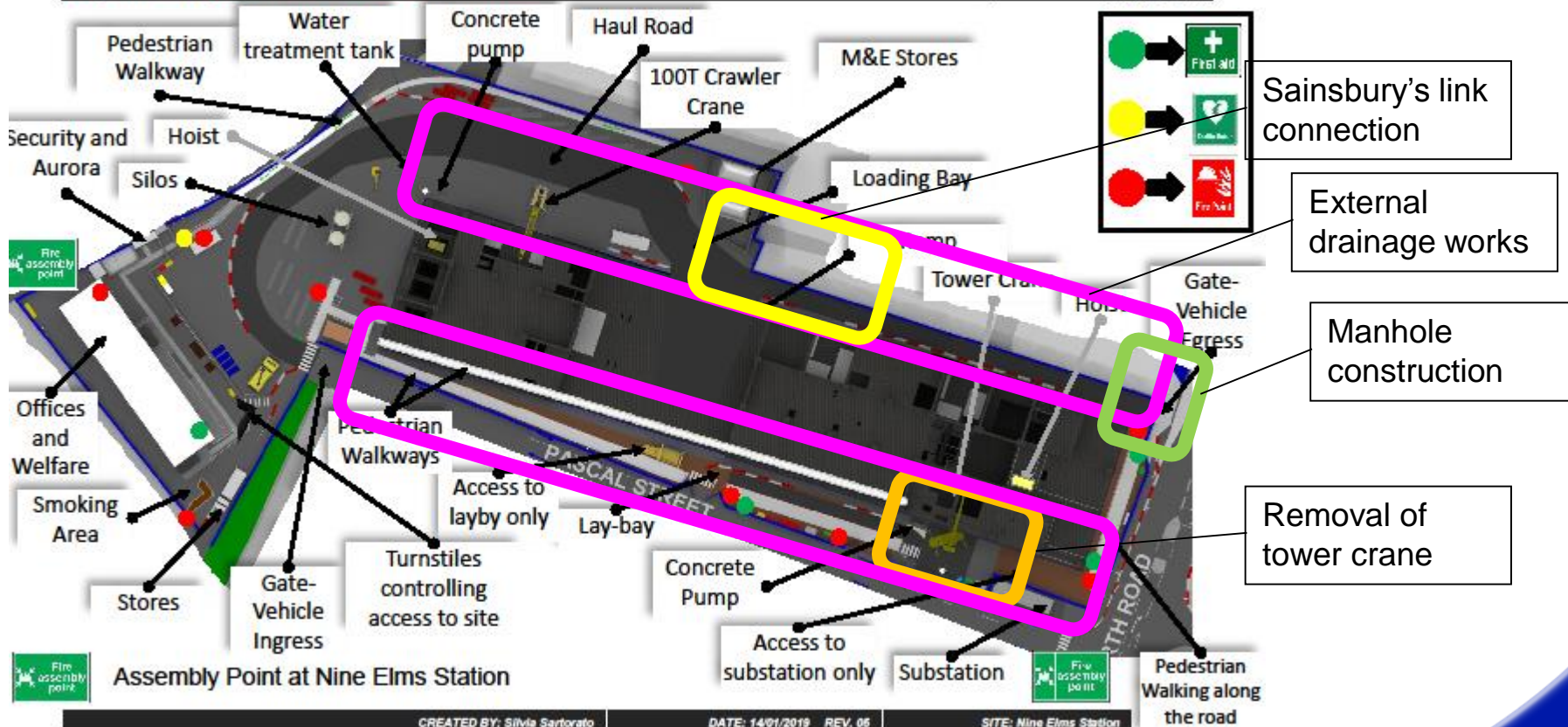
Completion of Western Superstructure



April '19 – June '19

Northern Line Extension: Nine Elms Station

Logistics Layout with Points of Interest



CREATED BY: Silvia Sartorato

DATE: 14/01/2019 REV. 06

SITE: Nine Elms Station

April '19 – June '19

Blockwork virtually finished in all levels

Painting on going

Screeds / levelling concrete in progress

Front of House substructures (cladding/ceiling)

Waterproofing of the roofs



April '19 – June '19

MEP works commenced



April '19 – June '19

Track works in progress

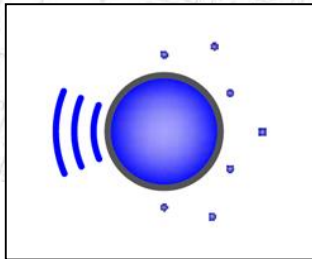
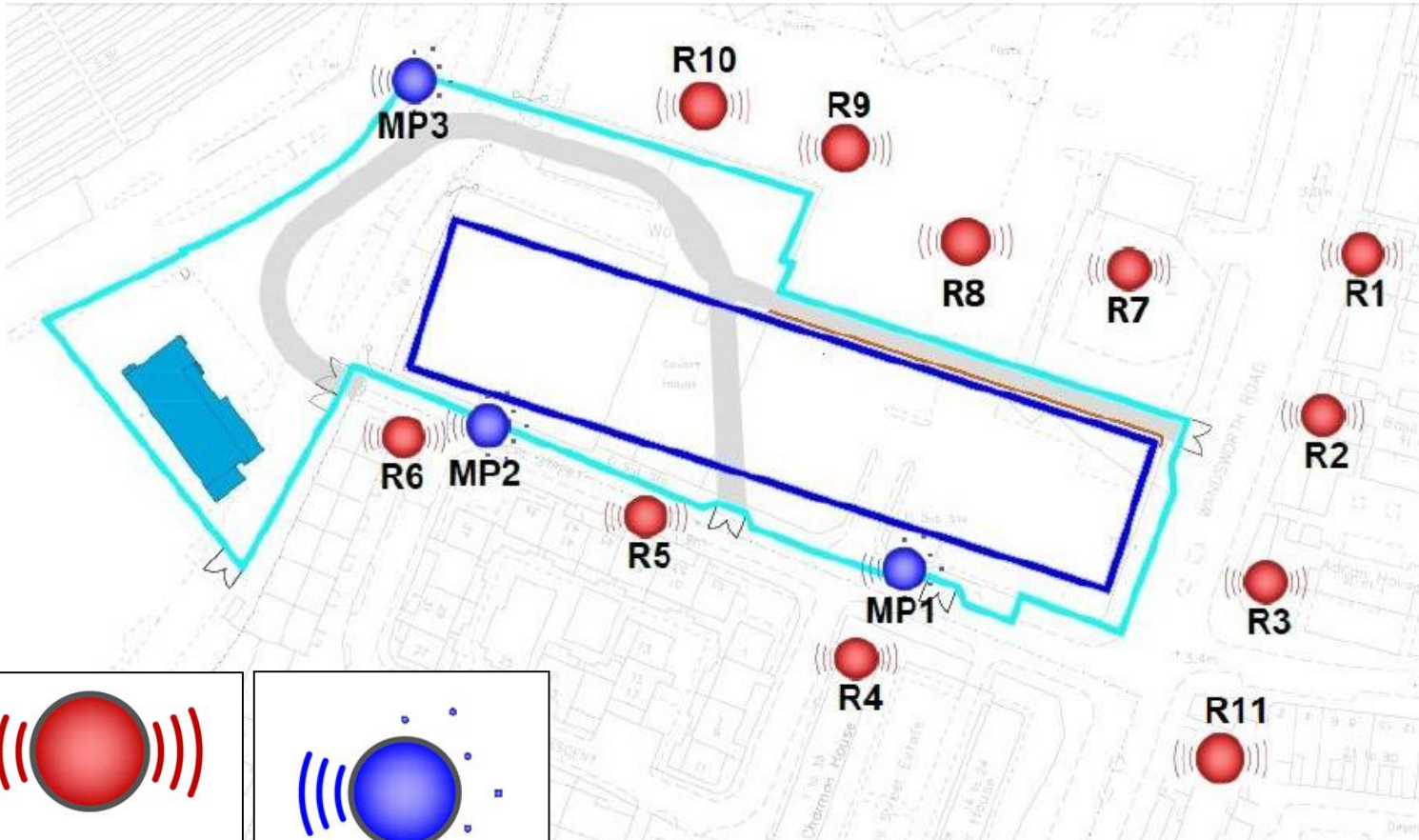


Environmental Monitoring Locations

Noise monitoring stations and sensitive receptors



FERROVIAL AGROMAN
LAING O'ROURKE JV



Unattended monitoring position

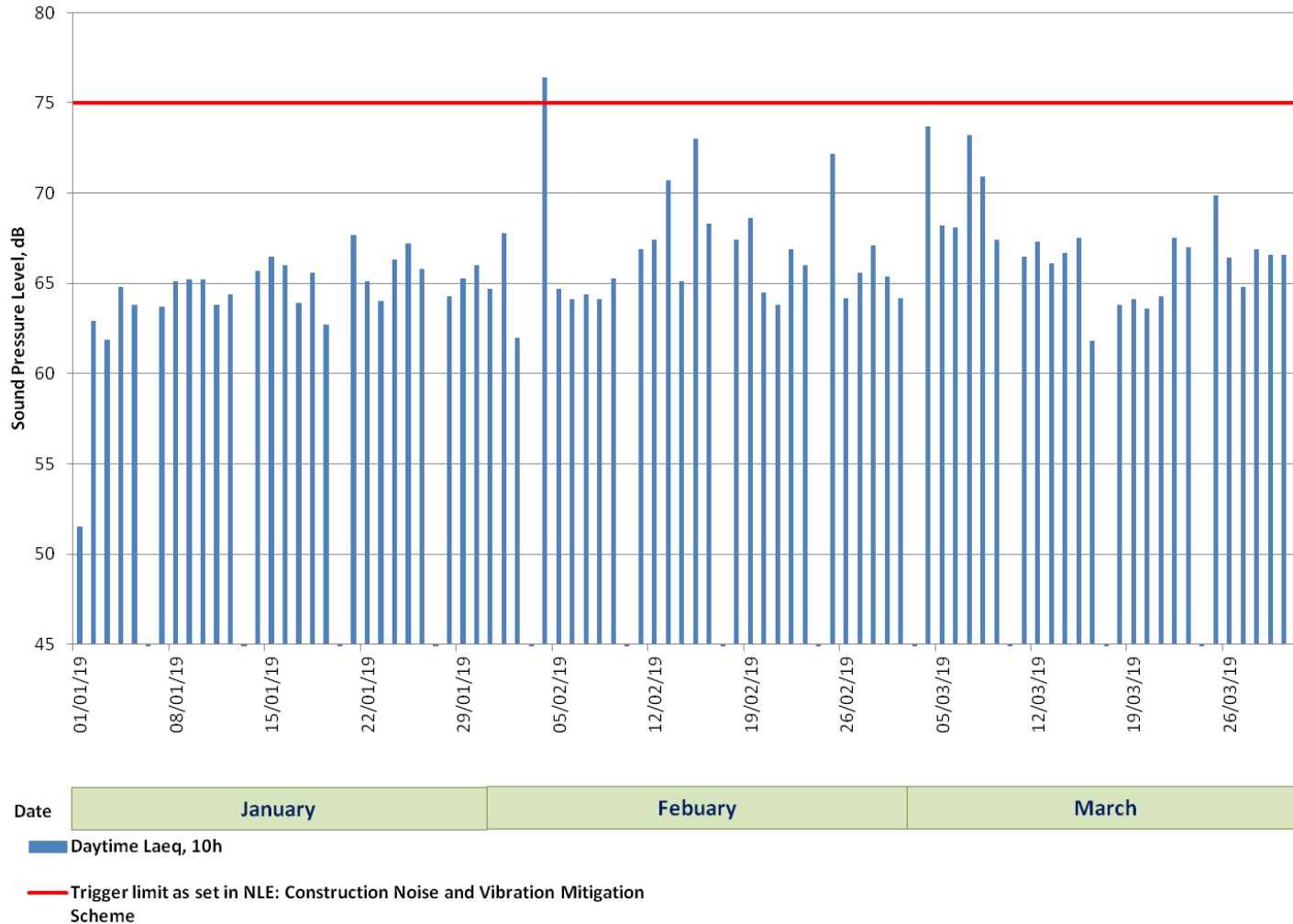


Construction Noise Monitoring



FERROVIAL AGROMAN
LAING O'ROURKE JV

Noise Time History: Receptor R1 - R4 (Wandsworth Rd, Charman House)





FERROVIAL AGROMAN
LAING O'ROURKE JV

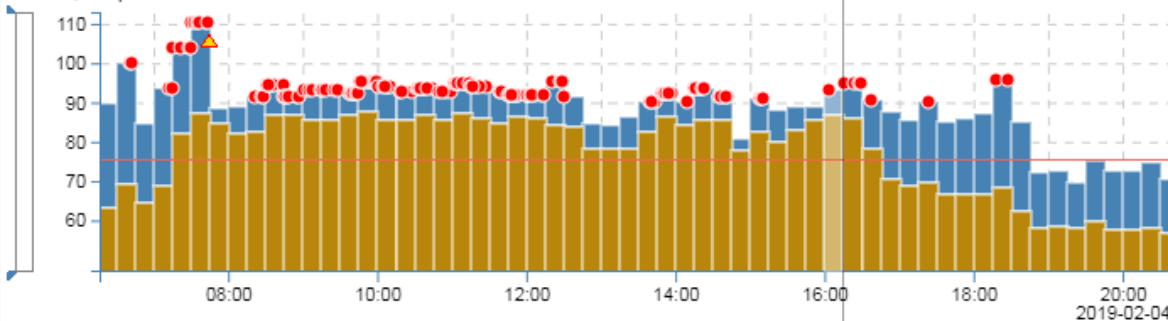


NE1_2091, Charman House MP1

Bars

Sensor: S50 #: 8676 Standard: (03) Lmax + Leq 40-115 dBA Fast Master(s) serial no.: 2091
 Unit: dBA Latest calibration: 2017-11-14 Quantity: Sound Pres.Level, Eqv.Sound Pres.L Interval time: 15 min

Lmax, Leq : dBA



2019-02-04 16:13:41
 Lmax: 93.2 dBA
 Leq: 86.9 dBA

— Lmax
 — Leq



Transient Nine_Elms NE1_2091 Lmax 2019-02-04 16 03 45.968.wav



NE1_2091, Charman House MP1

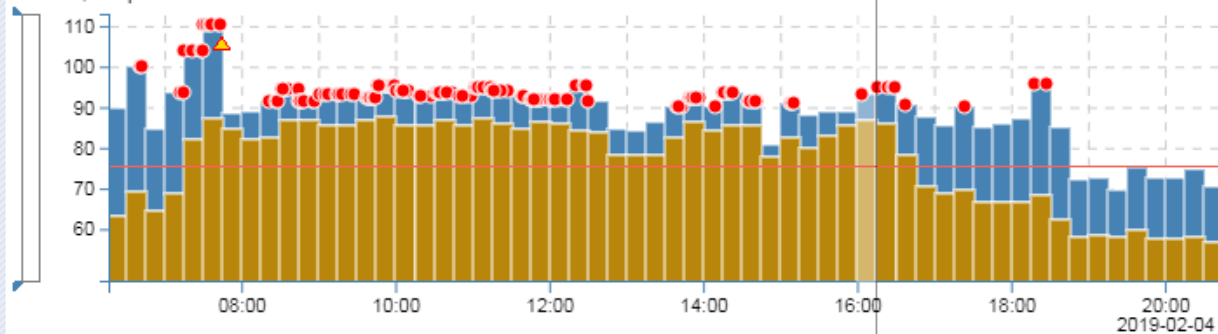
Bars



Sensor: S50 #: 8676 Standard: (03) Lmax + Leq 40-115 dBA Fast Master(s) serial no.: 2091

Unit: dBA Latest calibration: 2017-11-14 Quantity: Sound Pres.Level, Eqv.Sound Pres.L Interval time: 15 min

Lmax, Leq : dBA



2019-02-04 16:13:41
Lmax: 93.2 dBA
Leq: 86.9 dBA

— Lmax
— Leq

NE2_2094, No.51 Pascal Street MP2

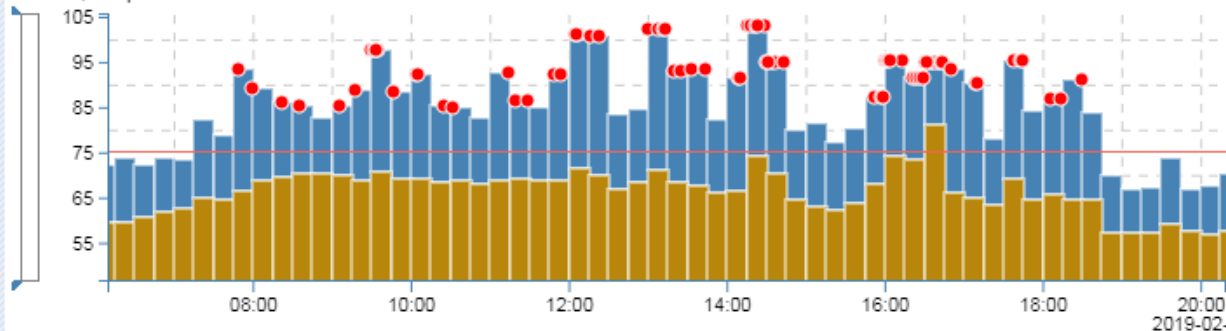
Bars



Sensor: S50 #: 9135 Standard: (03) Lmax + Leq 40-115 dBA Fast Master(s) serial no.: 2094

Unit: dBA Latest calibration: 2017-11-15 Quantity: Sound Pres.Level, Eqv.Sound Pres.L Interval time: 15 min

Lmax, Leq : dBA



— Lmax
— Leq

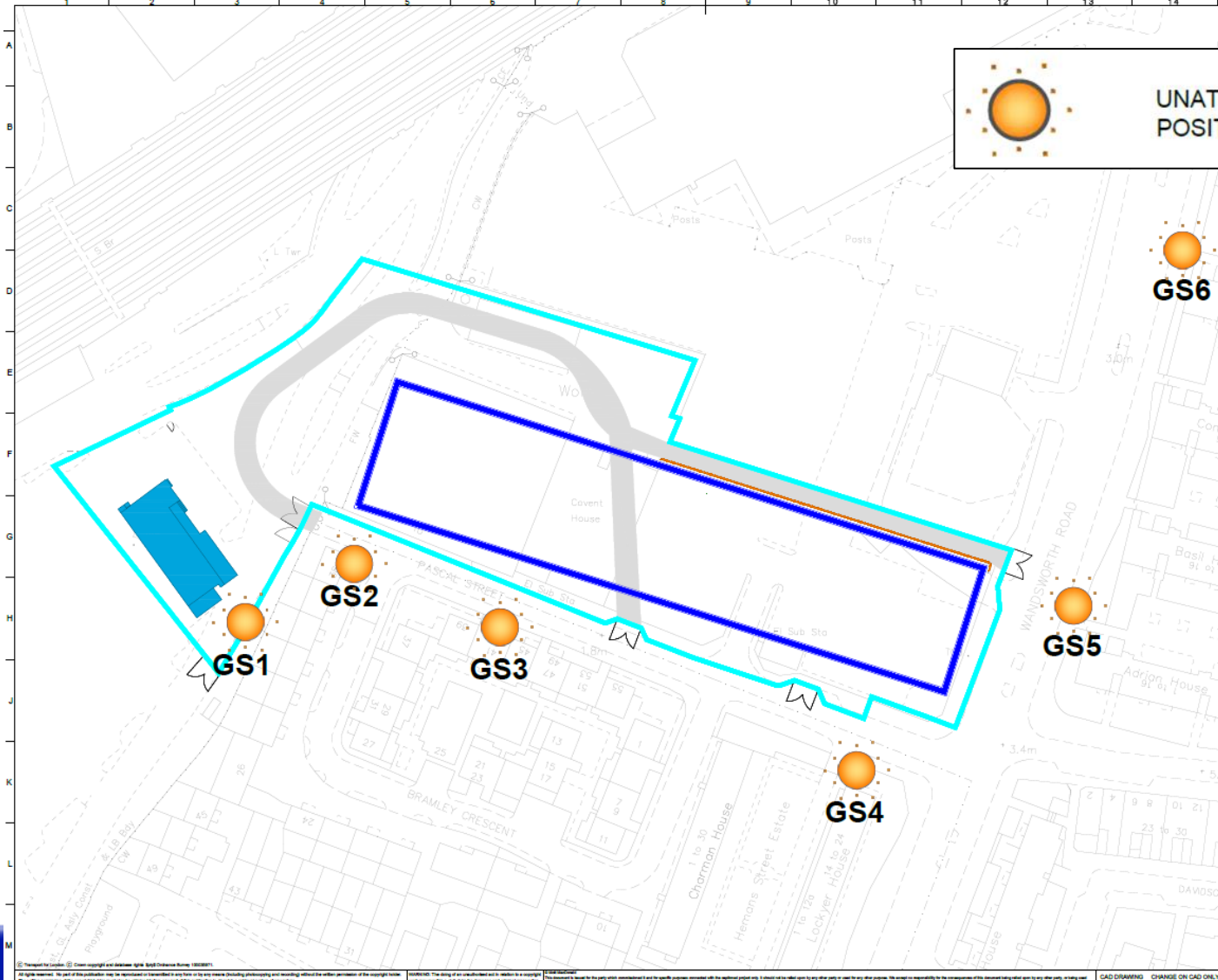


Environmental Monitoring Locations

Dust monitoring stations and sensitive receptors



FERROVIAL AGROMAN
LAING O'ROURKE JV



 UNATTENDED DUST MONITORING POSITION (GLASS SIDE)

GS6

GS5

GS4

GS3

GS2

GS1

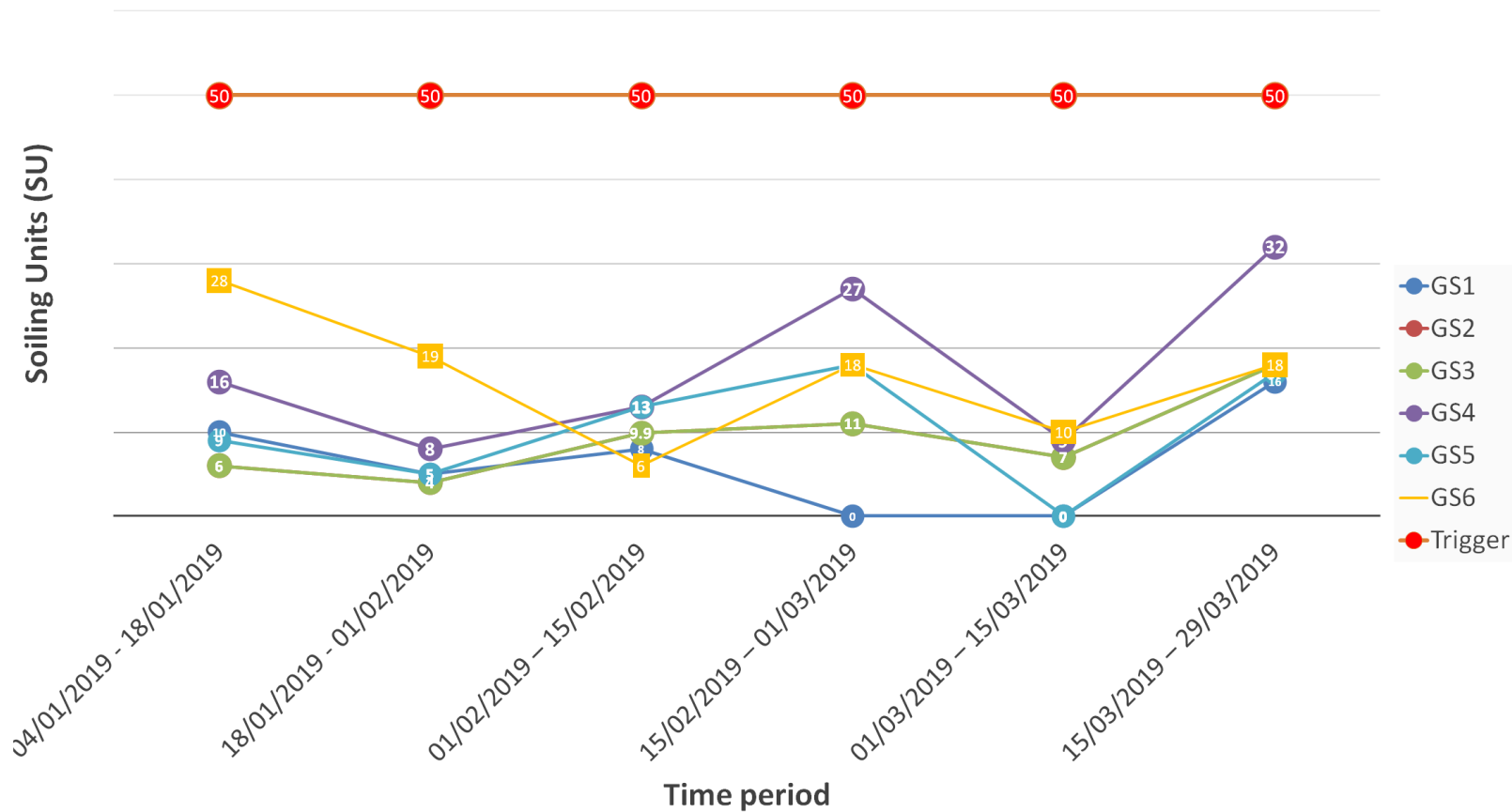


Dust Monitoring – Glass Slides



FERROVIAL AGROMAN
LAING O'ROURKE JV

NLE - Nine Elms - Fortnightly Passive AQ monitoring



Complaints & Enquiries Summary



FERROVIAL AGROMAN
LAING O'ROURKE JV

Stats for Nine Elms between 24 January and 3 April 2019

Open / Closed cases at Nine Elms

Total: 7 cases (5 enquiries, complaints)

Active: 1 (14%)

Resolved: 6 (86%)

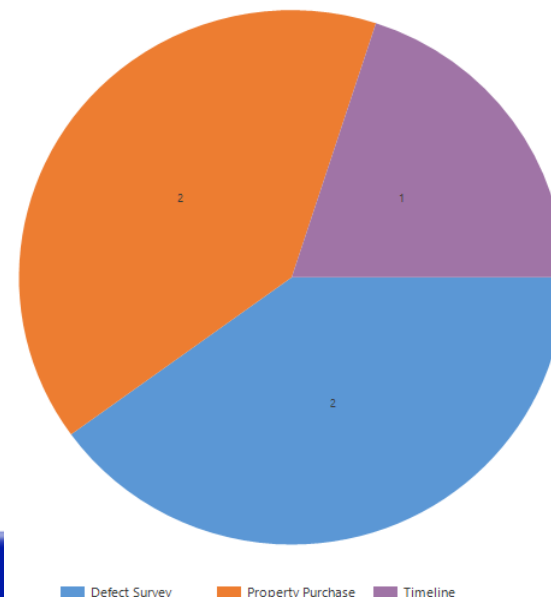
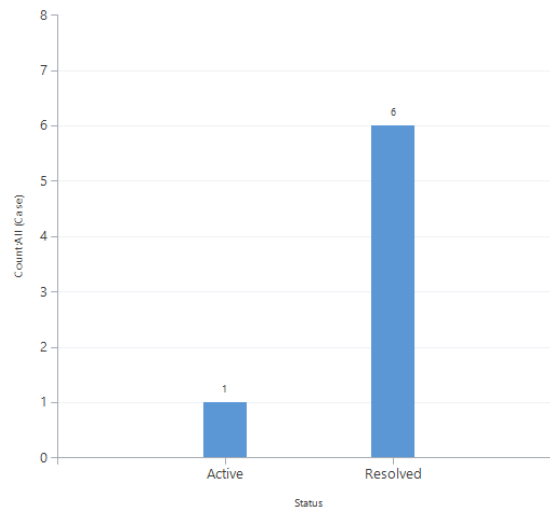
Enquiry Type:

Total: 5 enquiries

Timeline: 1 (20%)

Defect survey: 2 (40%)

Property purchase: 2 (40%)



Community Engagement and NLE Skills and Employment



FERROVIAL AGROMAN
LAING O'ROURKE JV



TfL Careers fair



Careers event at Sacred Heart School

- TfL careers fair – March – City Hall Westminster
- 'Construct' employment fair with 'Work Match' – South Thames College, Wandsworth – Jan
- Construction Youth Trust events - Building H, Drummond Road, SE16 4EE – March. Meet the professionals – speed interviews



Harris Westminster 6th form college visit and panel Q&A session about route into construction



Ways to contact us

- It is important that calls are logged through the NLE 24/7 helpdesk on 0343 222 2424 (Option 1)
- Email nle@tfl.gov.uk
- Drop In sessions
- Please visit:

<https://tfl.gov.uk/northern-line-extension>