

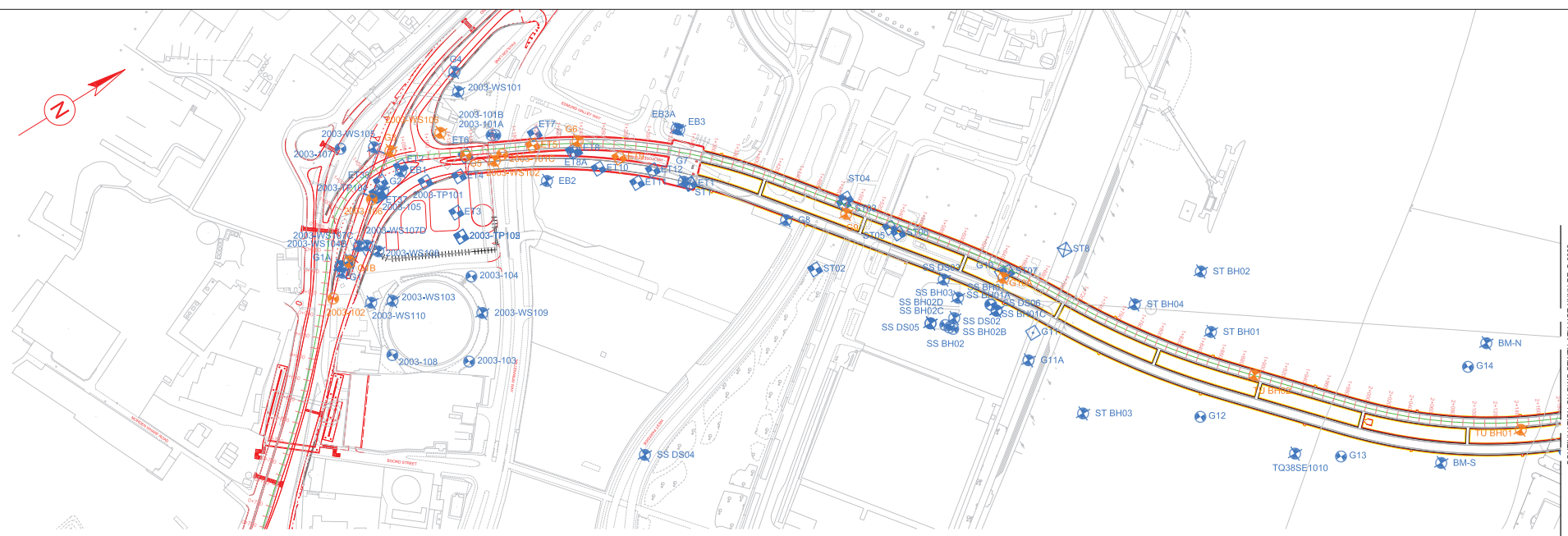
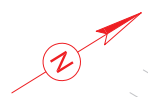
SILVERTOWN TUNNEL

**Preliminary
Environmental
Information Report:
Appendix 12.A
Ground
Investigation
Borehole Plan**

THIS PAGE IS LEFT INTENTIONALLY BLANK

DO NOT SCALE

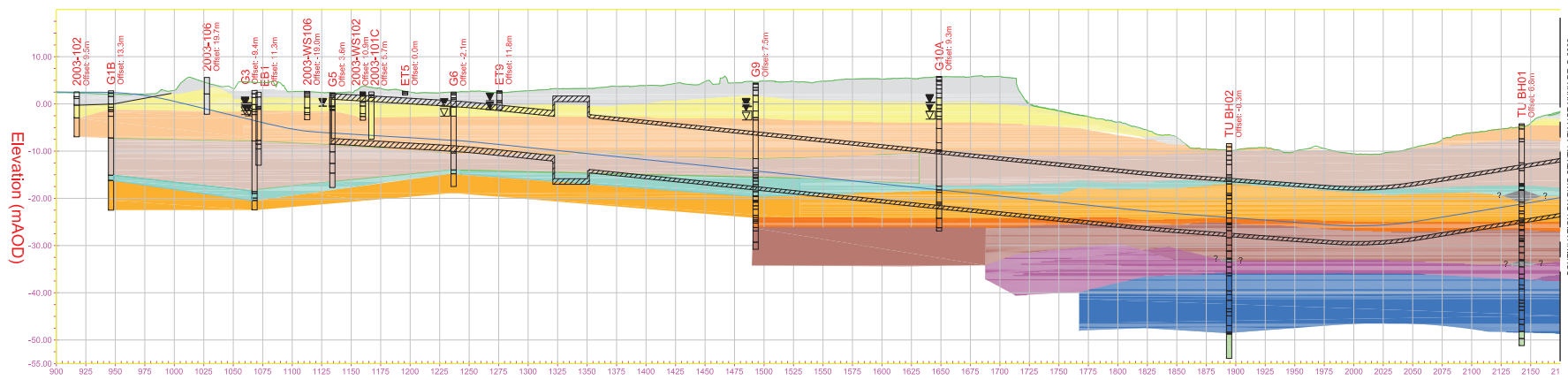
100
0
10
Millimetres



PLAN
1:2000

KEY:

	HARDSTANDING
	MADE GROUND
	ALLUVIUM
	RIVER TERRACE DEPOSIT
	LONDON CLAY
	HARWICH FORMATION
	WOOLWICH FORMATION LAMINATED BEDS
	WOOLWICH FORMATION LOWER SHELLY CLAY
	READING FORMATION LOWER MOTTLED CLAY
	UPNOR FORMATION
	THANET SAND
	CHALK
	ZONE OF CORE LOSS
	EXISTING GROUND LEVEL
	ROAD ALIGNMENT
	TUNNEL OUTLINE



LONG SECTION
1:2000H 1:500V

SAFETY, HEALTH AND ENVIRONMENTAL INFORMATION

In addition to the hazards/risks normally associated with the types of work detailed on this drawing, note the following significant residual risks (Reference shall also be made to the design hazard log).
Construction Groundwater is contiguous with the tidal River Thames throughout the geological sequence. High groundwater pressures may be expected at the tunnel face throughout the tunnel drive.
Maintenance / Cleaning None
Use None
Decommissioning / Demolition None

NOTES:

- THIS DRAWING IS TO BE READ IN CONJUNCTION WITH THE GROUND INVESTIGATION REPORT (GIR) STWTN-ATK-VT-XXXX-RP-GE-0001.
- TOPOGRAPHY IS TAKEN FROM THE TOPOGRAPHICAL SURVEY STWTN-ATK-GEN-XXXX-M3-G-0001.
- RIVER BED LEVEL IS TAKEN FROM THE BATHYMETRY SURVEY STWTN-ATK-VTO-XXXX-M3-G-0002.
- GEOLOGICAL DATA USED IN THE THREE DIMENSIONAL (3-D) MODEL (STWTN-ATK-GEN-XXXX-M3-Z-0001) HAS BEEN SOURCED FROM A NUMBER OF GROUND INVESTIGATION REPORTS, INCLUDING:
 - ATKINS, DLR LCY EXTENSION, 1998
 - ATKINS, GREENWICH PENINSULA, 2003
 - BURO HARPOLD, LONDON CABLE CAR, JULY 2011
 - ATKINS, SILVERTOWN TUNNEL, JUNE 2015
- THE GEOLOGICAL SECTION SHOWN IS A SLICE THROUGH THE 3-D GROUND MODEL USING ALL OF THE AVAILABLE DATA, AS LISTED IN NOTE 4. THE BOREHOLES SHOWN ON THE SECTION ARE A SELECTION ALONG THE LINE OF SECTION, FOR ILLUSTRATIVE PURPOSES ONLY. THEY DO NOT REPRESENT THE TOTALITY OF DATA USED TO GENERATE THE SECTION.
- THE GEOLOGICAL SECTION IS TAKEN ALONG THE CENTRE LINE OF THE NORTH TUNNEL.
- STRATIGRAPHICAL BOUNDARIES HAVE BEEN INFERRED FROM THE AVAILABLE BOREHOLE DATA. IT SHOULD BE NOTED THAT THE MODEL IS LIMITED BY THE AVAILABLE DATA POINTS; ZONES OF CORE LOSS CROSSING STRATIGRAPHICAL BOUNDARIES HAVE NOT BEEN INTERPRETED AND IDENTIFY ZONES OF UNCERTAINTY WITHIN THE MODEL.

Project: Jul 02, 2015 - 12:42pm by: MILE77034

P01	JC	FR	SRM	19/06/15
Draft				
Rev	Drawn / Des	Checked	Approved	Date
Description				

Drawing Status: **FOR REVIEW AND COMMENT** Submittal: **S3**

ATKINS Woodcoke Grove
Ashley Road
Epsom
Surrey
KT18 5BW
Tel: +44 (0)1372 726140
Fax: +44 (0)1372 740055
www.atkinsglobal.com

Copyright © Atkins Limited (2014)

Client: **Transport for London**

Project Title		SILVERTOWN TUNNEL REFERENCE DESIGN			
Drawing Title		GEOLOGICAL LONG SECTION AND LOCATION PLAN SHEET 1 OF 2			
Scale	As Shown	Designed / Drawn	Checked	Approved	Authorised
Original Size	A1	Date	Date	Date	Date
		16/06/15	16/06/15	16/06/15	19/06/15
Drawing Number		STWTN-ATK-HGT-XXXX-DR-C-0001		Revision	
				P01	

CONTINUATION ON DWG STWTN-ATK-HGT-XXXX-DR-C-0002

