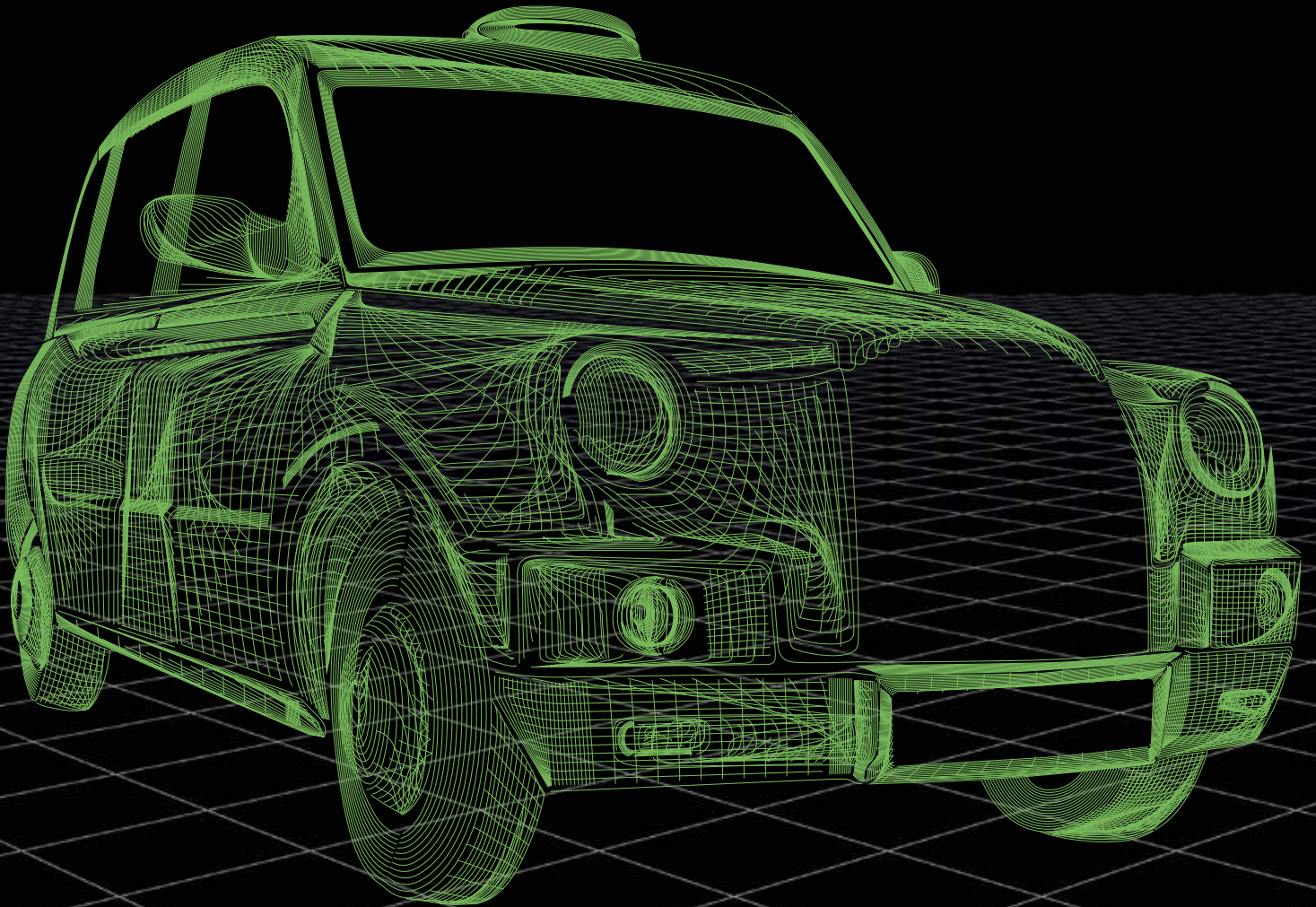


# OnRoute

Brought to you by Transport for London



## A glimpse of the future



### Emission possible

delicensing the most  
polluting taxis

### Taking care of business

keeping drivers secure

### Sales pitch

how to choose  
a new PH vehicle

### Star attraction

taxis on film

# Have your say on the Mayor's Transport Strategy

The Mayor, Sadiq Khan, wants to create a better city for all Londoners, and transport is at the heart of his vision.

The Transport Strategy sets out his plans to transform London's streets, improve public transport and create opportunities for new homes and jobs.

To find out more about the consultation and to submit your views, visit [tfl.gov.uk/mayors-transport-strategy](http://tfl.gov.uk/mayors-transport-strategy)

Consultation ends 2 October 2017



# Contents

<p><b>8</b> <b>Dramatic licence</b> The Knowledge takes to the London stage</p>	<p><b>16</b> <b>Taxi delicensing</b> Helping drivers switch to greener taxis</p>	<p>12 </p>
<p><b>11</b> <b>Private hire notice</b> English language requirement</p>	<p><b>24</b> <b>The cab's the star</b> Taxis on film</p>	<p>24 </p>
<p><b>12</b> <b>Deals on wheels</b> Choosing a new or used vehicle for private hire</p>	<p><b>28</b> <b>Top tips online</b> The easy way to apply for a licence</p>	<p>30 </p>
<p><b>14</b> <b>Safety first</b> Prioritising driver safety</p>	<p><b>30</b> <b>Dogs on board</b> Carrying assistance dogs</p>	<p>8 </p>

**Contact us at [OnRoute@tfl.gov.uk](mailto:OnRoute@tfl.gov.uk)**

**London Taxi and Private Hire**  
230 Blackfriars Road, London SE1 8PJ

For general enquiries email: [tph.enquiries@tfl.gov.uk](mailto:tph.enquiries@tfl.gov.uk)

Visit the TfL website: [tfl.gov.uk/tph](http://tfl.gov.uk/tph)

0343 222 4444 (lines open from 08:00 to 18:00, Monday to Friday)

For operator and driver licensing enquiries and the Knowledge enquiries: 0343 222 5555 for vehicle licensing appointments and enquiries.

TPH news on Twitter: @TfLTPH

For constant updates on diversions, congestion and accidents: @TfLTrafficNews (roads)

TfL produces a weekly email with information on current and forthcoming road closures and diversions. If you would like to receive this, please contact [tph.enquiries@tfl.gov.uk](mailto:tph.enquiries@tfl.gov.uk)

The views expressed in OnRoute are not necessarily those of TfL.

## Welcome.

This is the second anniversary issue of OnRoute and a lot has happened since we turned one. This year the Mayor published his draft Transport Strategy, an ambitious plan to improve how we all travel around the Capital. Both taxi and private hire play an important part in that and we cover some of the biggest changes – the introduction of the Ultra Low Emission Zone, zero emission taxis and rapid electric chargers – from p16.

Choosing a car to use as a private hire vehicle is a big decision. On p12 we look at the most popular models and what you should think about before buying.

There's advice on keeping safe while driving (p14), applying for a licence online (p28) and carrying assistance dogs (p30). We've also been chatting to the cast of The Knowledge play (p8).

It's a bumper issue, but if there's anything we haven't covered that you would like to read about in future issues, please drop us a line at [OnRoute@tfl.gov.uk](mailto:OnRoute@tfl.gov.uk)



**D Pilgrim**  
Editor



### In our next issue...

- The Mayor's cleaner vehicle checker
- Safer Travel at Night
- A family of cabbies

# News

## Electric surge

Twenty-five boroughs in London are to receive almost £4.5m to install 1,500 electric vehicle charging points.

The new funding follows the Government's announcement that it will ban petrol and diesel vehicles from 2040. It will provide residential charge points for those drivers without access to off-street parking, helping them make the switch to zero emission vehicles. These will be in addition to the network of rapid charge points TfL is installing by the end of 2020 (see p18).

## TPH licensing in numbers

24,201  
Taxi drivers

21,140  
Taxi vehicle licences

116,729  
Private hire driver licences

88,322  
Private hire vehicle licences

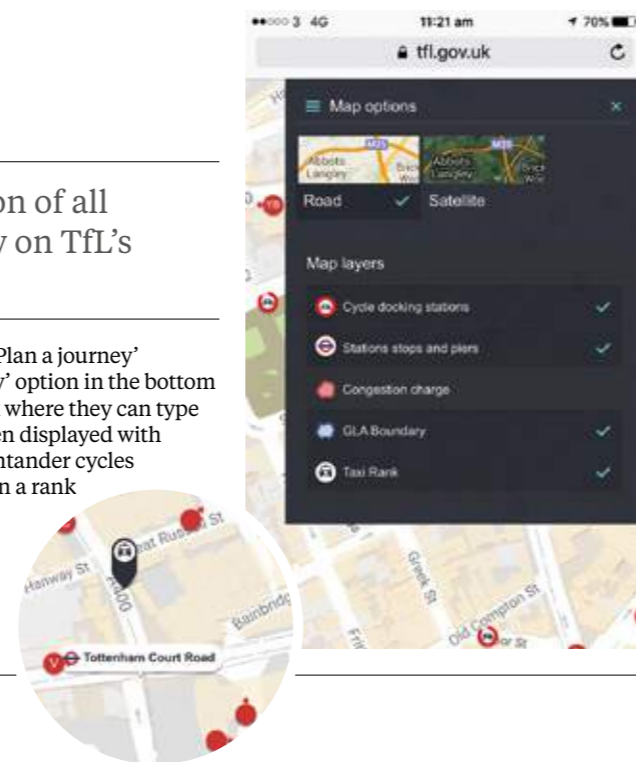
2,443  
Private hire operators

## Taxi ranks nearby

Information on the location of all London's taxi ranks is now on TfL's Journey Planner.

When customers go to the TfL website, 'Plan a journey' comes up on the homepage. The 'Nearby' option in the bottom right corner takes them through to a box where they can type in their location. A map of the area is then displayed with icons showing where buses, stations, Santander cycles and taxi ranks are located. If they click on a rank they can see the number of spaces and the opening hours.

●●● You can access Journey Planner by going to [tfl.gov.uk/plan-a-journey](https://tfl.gov.uk/plan-a-journey)



## Closures at Staples Corner

Staples Corner flyover on the A406 will be closed on 17 September between 00:01 and 23:59 for repairs.

Roads in the surrounding area will be extremely

busy, so drivers should allow more time and use alternative routes where possible.

It will also be closed eastbound from 22:00 Monday 18 September to 05:00 Tuesday

19 September, and westbound from 22:00 Tuesday 19 September to 05:00 Wednesday 20 September.

●●● For more information, go to [tfl.gov.uk/northwest-london-major-roadworks](https://tfl.gov.uk/northwest-london-major-roadworks)

## The rebirth of Barking Riverside

The Government has given the green light for an extension of the London Overground to Barking Riverside. This will help support one of east London's largest new housing developments with the creation of 10,800 new homes. A school, healthcare facilities and commercial and leisure facilities will also be built. Services to a new Barking Riverside station are set to begin in late 2021.



## » Gimme shelter

The cabmen's shelter in Grosvenor Gardens, built in 1906 for taxi drivers waiting at the rank, has been given Grade II-listed status.

The small, green hut, built by the Cabmen's Shelter Fund, is one of only 13 remaining in the Capital and is still used by taxi drivers.

The listing system was introduced in 1947 to protect historic buildings after heavy bombing in the Second World War.



## Ranked number one

A new taxi rank has been appointed outside the exit of University College London Hospital (UCLH). Some of the drivers using the rank in Beaumont Place are participating in the 10HS scheme, which was set up earlier this year.

It offers a 10 per cent discount on taxi fares to staff, patients and visitors at hospitals.

Security staff patrol the area, including the rank, and parking tickets will be issued to any taxis left unattended on the rank or other vehicles parked there.

●●● Drivers who are interested in participating in the 10HS scheme can find more information on Twitter at [twitter.com/10HSTAXI](https://twitter.com/10HSTAXI)

## Damaged licence discs

Private hire drivers and vehicle licence holders should make sure their vehicle licence discs are displayed at all times.

If your disc is accidentally damaged, call vehicle licensing on 0343 222 5555 to make an appointment at your closest vehicle inspection centre. There is no charge to replace a damaged licence disc.



## Charity for the Capital's children

Next year is the 90th anniversary of the London Taxi Drivers' Fund for Underprivileged Children and the charity is planning some special events to mark the occasion.

Committee member Michael Son told OnRoute: 'During the year we're having a Mad Hatter's tea party, a grand gala dinner and ball, and I'm trying to organise a classical music concert and an art competition for the children. We are working with 42 schools for children with special needs in the London area because we want to give something back.'

●●● Around 400 taxi drivers are currently involved with the charity. Go to [www.thelondontaxidriverschildrenscharity.co.uk](https://www.thelondontaxidriverschildrenscharity.co.uk) if you would like to join them



## Latest trend



These are the topics trending @TfLTPH:

Following its launch, cabbies are discussing London Electric Vehicle Company's new zero emission capable (ZEC) taxi (see p19).

Tweets about compliance team activity continue to be widely shared and discussed and many drivers are reporting non-compliant vehicles and illegal parking.

The @TfLTPH Twitter feed now has 13,194 followers.

## No added extras

Charging more to use a credit or debit card will become illegal in the UK from 13 January 2018.

This will not affect taxi drivers as customers using cards in taxis do not pay a surcharge on their fare. However, this will impact private hire operators that currently charge more for card or contactless payments. Look out for details in the November issue of OnRoute.

●●● For more information, go to [www.gov.uk](https://www.gov.uk) and search under 'card charges to be outlawed'

# A trip down memory lane

A group of Jewish taxi drivers from east London pose on a charabanc during their annual outing in July 1923.

Traditionally, there's been a strong connection between the taxi trade and the Jewish community in east London with many people enrolling on the Knowledge after both World Wars and following National Service.

Do you know anything more about this picture or the people in it? Or do you have another memory of the taxi or private hire trade you'd like to share? Get in contact at [OnRoute@tfl.gov.uk](mailto:OnRoute@tfl.gov.uk)

Picture courtesy of Ken Fienwell and Arnie Prayer



# In the know

Acclaimed TV drama, *The Knowledge*, is coming to the London stage

**W**ritten by Jack Rosenthal, *The Knowledge* first aired on British TV back in 1979. Now it's been adapted into a play, directed by Rosenthal's widow Maureen Lipman, who had a starring role in the original production.

Set against the harsh economy of the 70s, it follows the struggles of four Londoners as they attempt to better themselves by passing the Knowledge. Standing between them and the coveted green badge is Mr. Burgess, the examiner.

Maureen said: 'The play shows the years of pain, strain and sacrifice that London cabbies have to endure to acquire the Knowledge, pass the world's toughest and most terrifying taxi examinations, and earn the right to wear the green badge.'



**The Knowledge is playing at Charing Cross Theatre until Saturday 11 November.**  
[www.charingcrosstheatre.co.uk/theatre/the-knowledge](http://www.charingcrosstheatre.co.uk/theatre/the-knowledge)  
**Box office: 08444 930 650**

## Did you know...

- Maureen Lipman played Brenda Weller in the original TV drama
- In 2000, the British Film Institute voted *The Knowledge* as one of the 100 greatest television programmes, of any genre, ever screened

**“If you're a genius it might take you a year. On the other hand it might take you two, or even 10. And if it looks like it's going to take you longer than that, I should chuck it in and take up ballet dancing instead”**

Mr Burgess in *The Knowledge*

## Acting the part

The cast of *The Knowledge* talks about London's taxi trade



**Steven Pacey**

Plays the eccentric Mr. Burgess, the examiner, also known as 'The Vampire'. He is on an obsessive mission to maintain the Knowledge standards.

'I hailed a black cab near Blackheath at one in the morning and even though he was on his way home to north London, he took me all the way south to Horley. Great guy. Never forgotten it.'



**Celine Abrahams**

Stars as Brenda Weller, married to trainee cabbie Gordon (James Alexandrou, see p10).

'Black cabs are part of the heart of London. I've learnt some of my most trusted life lessons from a black cab chat.'



**Ben Caplan**

Ben's character Ted comes from a family of taxi drivers. Now he's doing the Knowledge himself.

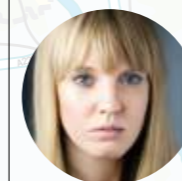
'I had an idea of travelling around the UK in a black cab and making a documentary about what it is to be British, but then Stephen Fry beat me to it!'



**Jenna Augen**

Plays Ted's wife, Val.

'The Knowledge and London cabbies are remarkable and unique. It is so impressive and disciplined what they do and I hope this play can help to celebrate the great tradition that is the London cabbie. See you at the show!'



**Louise Callaghan**

As Miss Staveley, Louise plays the only woman in this group of Knowledge candidates.

'Despite growing up in Cornwall I used to ride a black cab to school, which in a small fishing town was very unusual. I felt like a real celebrity pulling into the school car park.'



**Michael Chance**

Plays three separate roles: a cabbie, an Arab tourist and a chauffeur.

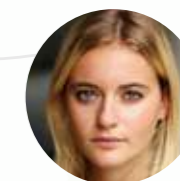
'I was in a taxi during the Pride parade and the roads were a nightmare. The black cab driver switched his meter off after we had clocked up £15 and refused to take any more. I think if he hadn't done so the trip would have cost about 40 quid. A real gem!'



**Fabien Frankel**

His role as Knowledge candidate Chris marks Fabien's professional stage debut.

'I've learned more about London from black cabbies than anyone else in the city. Without a doubt they are the best taxi drivers in the world.'



**Alice Felgate**

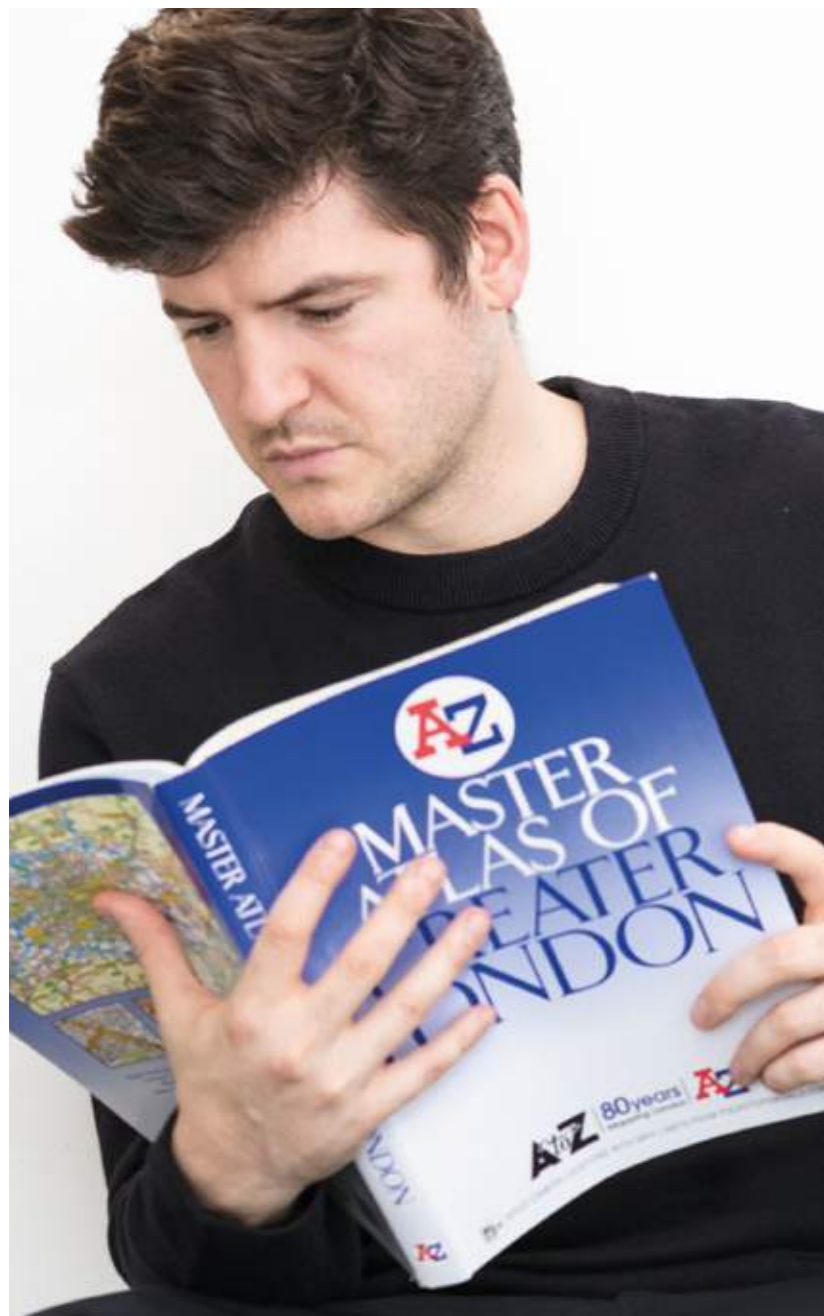
Alice plays Chris' girlfriend Janet.

'I've found cabbies the nicest drivers on the streets of London. They always let you go and are more than happy to give you directions.'

Above left:  
Actress Maureen Lipman  
directs the play

# East End boy

Actor James Alexandrou grew up in the East End, made his name as Martin Fowler in EastEnders and now lives in Shoreditch. He's treading the boards as Gordon in The Knowledge



**Q Has the London black taxi been a constant motif in your life?**

**A** Yes I suppose it has – living in London the black cab is just part of the landscape. Pretty much everyone I know has a taxi driver somewhere in their family: fathers, uncles, aunties, or among their peer group. I feel a great debt of responsibility with The Knowledge to do a good, honest job about playing this character, Gordon, who is attempting to become a taxi driver. I want cabbies and their families to come and see the show and recognise all the characters on stage as people they know.

**Q Do you think you could ever do the Knowledge yourself?**

**A** I foolishly think – rather like Gordon – that I could do it, but I don't have the will power or dedication needed to complete it. It would be like asking an actor to learn a 10,000-page script, just ridiculous. I'm incredibly impressed by those who successfully pass the test. I'm quite tempted to have a mock Appearance, but would probably fail!

I've actually sat in the room during a few Appearances and the pressure is incredible.

I've been up to audition for several big jobs and I know if I don't get it, I'll move on. But these Knowledge candidates have so much more at stake when they walk into that room. I'm sure I'd buckle under that sort of pressure.

**Q What's your favourite journey in London?**

**A** Any journey home... I do love going home. Actually, any journey that crosses

a bridge on the Thames, but especially Tower Bridge looking west or Westminster Bridge looking east. We have the most beautiful city in the world.

**Q You once said of your exit from EastEnders: 'You either leave in a black cab or a coffin'. Did you ever want to reappear by stepping out of a taxi into the Square?**

**A** That ship – or taxi – has sailed/left the rank! There is someone else playing my part now. I was asked back a while ago and there was a part of me that fancied it for a second but the timing was just so bad for me and I had to say no in the end.

Maybe one day, if the current fella leaves, I could come back and do a little cameo appearance. That would be nice.

**Q Do you keep in touch with any EastEnders pals?**

**A** Not as many as I'd like, actually. It's been a while now but I need to catch up with Natalie Cassidy (Sonia). I'm sure she will come and see The Knowledge – and love it! Ray Panthaki (Ronny) is a very good friend of mine, and I still see Mohammed George (Gus). We three play football together.

**Q Tell us how your directorial film debut (The Show) came about?**

**A** I made a short film that was shown at some film festivals. A producer saw it and liked it and asked if I'd like to make a feature film. I then wrote The Show, which draws upon some of my experiences leaving EastEnders and going on to do a stage play.

# English language requirement update



Last year, TfL made a number of regulatory changes to raise standards in London's private hire industry, including introducing an English language requirement

This was upheld by the High Court on **3 March 2017** and requires applicants for either a new or renewal private hire driver's licence to demonstrate they can communicate in English at the appropriate level for speaking, listening, reading and writing.

However, the High Court's judgement is now subject to an appeal, which will be heard from **20 February 2018**.

Previously, anyone whose application for a new or renewal private hire driver's licence was received on or after **14 October 2016**

had until **30 September 2017** to provide evidence of their ability to comply with the requirement. That deadline has now been extended to **16 July 2018**.

Current licence holders whose application for a private hire driver's licence was received before **14 October 2016** will need to satisfy the English language requirement only at the point where they apply to renew their licence.

Drivers whose licence needs to be renewed before **16 July 2018** have until that date to satisfy the English language requirement.

If you need advice about your private hire licence or application, please email [tpb.enquiries@tfl.gov.uk](mailto:tpb.enquiries@tfl.gov.uk) or call the licensing team on **0343 222 4444** (Monday to Friday, 08:00 to 18:00).

A handwritten signature in black ink, appearing to be 'Helen Chapman'.

**Helen Chapman**  
general manager  
London Taxi and Private Hire



# How to... choose a PH vehicle

London's PH vehicles come in all shapes and sizes – the top 10 models are made by six different manufacturers. So when it comes to choosing one, what should you be looking for?

**B**efore you consider the cost, engine size, layout and special features, there are some criteria all PH vehicles have to comply with before they can be licensed.

Those presented for first licensing in London must currently meet euro 4 emission standards as a minimum (see box on right). From 1 January 2018, they must have a Euro 6 petrol or diesel engine, or a Euro 4 petrol-hybrid engine.

All PH vehicles must be constructed or adapted to seat fewer than nine passengers, including the driver. They cannot resemble a taxi and must not be a public service vehicle (such as a minibus, larger vehicle or stretched limousine capable of taking more than eight passengers).

#### Vehicle reliability and maintenance costs

Although your budget will influence what vehicle you buy, you should factor in how reliable it is going to be, and how much it will cost you to get it serviced. You could buy an older model that has previously been licensed but it may well have done a lot of mileage so repairs and maintenance could be costly.

#### Fuel type, efficiency and emissions standards

With poor air quality becoming an increasingly important issue in the Capital, you should consider hybrid or pure electric vehicles. Currently, it is proposed that the Ultra Low Emission Zone (ULEZ) will launch in September 2020 in central London to help improve air quality and people's health. All PH vehicles will need to meet more stringent emission standards or pay an additional daily charge when travelling within central London (see p16 to 19).

Even further in the future, the Government intends to ban all new petrol and diesel cars by 2040.

#### Passenger space and comfort

If you want to build customer loyalty you'll need to think about how easy it is for people to get in and out of the car (especially in an emergency) and how comfortable their journey is. Look for a spacious interior with lots of legroom.

Passengers travelling to and from airports or stations may have bulky luggage, while others may have hired you specifically because they have a lot of shopping, or have pushchairs or buggies. You should check the boot size is adequate.

#### Wheelchair accessible vehicles

Section 165 of the Equality Act 2010 states that drivers of taxis and wheelchair-accessible PH vehicles must carry wheelchair users and provide mobility assistance without additional charge. Non-compliant drivers risk prosecution and fines of up to £1,000. There is a list of designated wheelchair-accessible PH vehicles on the TfL website.

Further information can be found at [tfl.gov.uk/tph](http://tfl.gov.uk/tph) under ranks, regulation and policy

#### >>

#### Euro 4 emission standards: Petrol

1g/km  
carbon dioxide

0.10g/km  
hydrocarbons

0.08g/km  
nitrogen oxides

no limit  
particulate matter

#### Diesel

0.50g/km  
carbon dioxide

0.30g/km  
hydrocarbons

0.25g/km  
nitrogen oxides

0.025g/km  
particulate matter



### Ten most popular PH vehicles in London

Make	Model	Total
TOYOTA	PRIUS	23,602
FORD	GALAXY	10,151
MERCEDES	E CLASS	8,266
VAUXHALL	ZAFIRA	4,769
VOLKSWAGEN	SHARAN	3,418
VAUXHALL	INSIGNIA	3,115
VOLKSWAGEN	PASSAT	2,921
HONDA	INSIGHT	2,190
MERCEDES	V CLASS	2,157
MERCEDES	S CLASS	1,957

Data as at June 2017



# Keeping safe and sound

Although assaults on taxi and PH drivers are rare, it pays to take precautions and there are a number of things you can do to keep yourself out of harm's way

## Deterring crime

Having a CCTV system fitted to your taxi or PH vehicle – while not mandatory in London – can make you and your passengers safer.

CCTV can:

- Deter and prevent crime
- Reduce the fear of crime
- Help the police to investigate crimes
- Aid insurance companies when they investigate motor accidents
- Assist in any disputes between drivers and their passengers

CCTV systems approved by TfL can be installed in taxis and PH vehicles. When you take your vehicle for its

annual licensing inspection, the CCTV system will be checked to make sure it is approved and that it has been fitted correctly.

The images recorded must be kept secure at all times and can only be retained for 28 days from the date when they were taken. There is more guidance on how to keep personal data secure on the Information Commissioner's Office website at [www.ico.org.uk/](http://www.ico.org.uk/)

••• You can find TfL's guidelines on CCTV and a list of TfL approved CCTV systems at [tfl.gov.uk/corporate/publications-and-reports/taxi-and-private-hire](http://tfl.gov.uk/corporate/publications-and-reports/taxi-and-private-hire)



### Did you know...

Some insurers offer discounts of between 10 and 20 per cent on premiums if a dash cam that records external activity is fitted to your vehicle. It is worth checking with your own insurer to see if they offer this. Only dash cams approved by TfL are permitted.



## If you have CCTV fitted in your taxi or private hire vehicle, you must display this sign



## Spit kits

Being spat at is a nasty – and personal – form of assault. Andrew Brook from the workplace support team in TfL's enforcement and on-street operations, would like all taxi and private hire drivers to consider carrying a spit kit in their vehicle so offenders can be identified and prosecuted.

Kits contain a swab that can be used to collect DNA samples from saliva. They are widely available online and cost just a few pounds.

If a correctly used spit kit is submitted to the police for analysis, there is an 80 per cent chance of identifying a suspect. However, in many spitting cases people don't have a kit to hand or use it incorrectly, so here are a few pointers.

### When your kit arrives, check it contains everything you need:

- Instruction leaflet
- A sterile swab in tube
- An exhibit bag
- One pair of sterile gloves

Check the 'use by' date on your kit. Most have a shelf life of about two years.

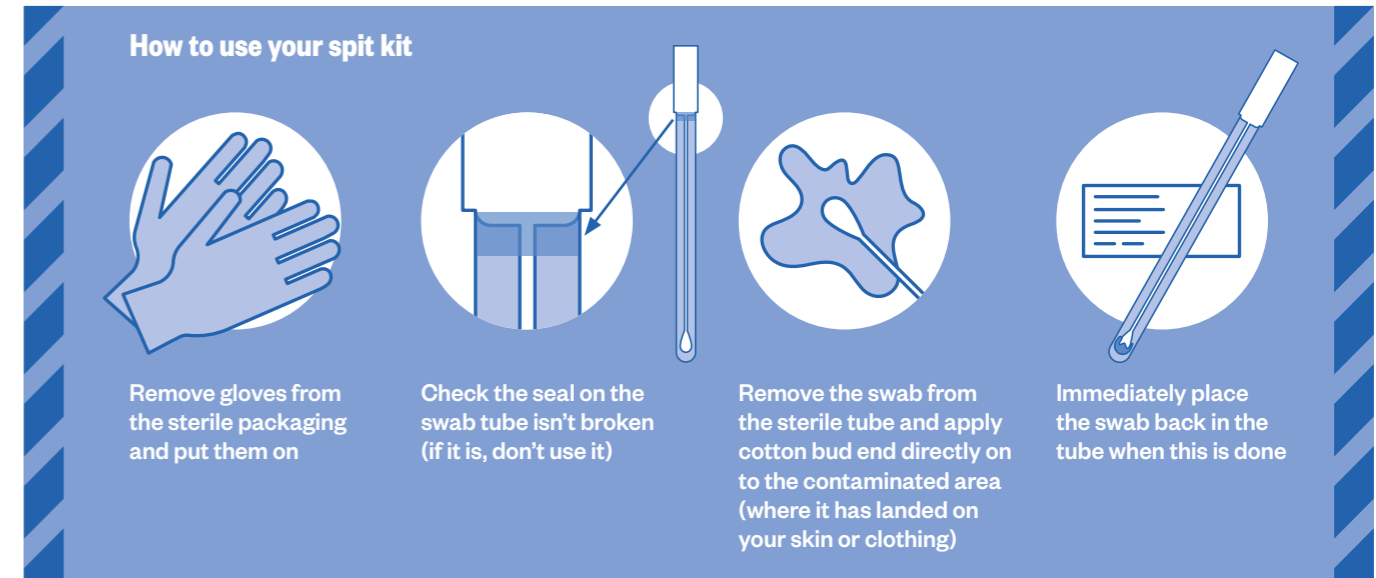
### If you are spat at you should:

- Use your spit kit at the first available opportunity
- Only swab from the skin or clothing. Do not swab from surfaces that passengers have access to as this may lead to cross-contamination
- Use the gloves supplied

### You should then:

- Write your full name and the date on the tube. Put it into the evidence bag and seal it
- Fill in the information panel on the front of the bag and take it to a police station as soon as possible

The police can help you fill in the information panel on the bag and write your witness statement.



## Acid attacks

In the past year, incidents involving acid being thrown at people have almost doubled according to Metropolitan Police Service figures (from 261 in 2015 to 454 in 2016). One attack has so far been reported against a private hire driver.

If you are attacked, or come across someone who has been a victim of an acid attack, the police advice is:

- Get immediate medical help (call emergency services)
- Wash with a lot of water for 20 minutes or more
- Make sure the 'run off' water from washing the affected area doesn't get on to other parts of the body
- Do not pull off clothing stuck to the skin or take clothing off over your head, instead cut away affected clothing
- Do not sniff the substance to find out what it is as you could inhale it

## Who to call

Call 101 if the threat is not immediate or 999 in an emergency





“Cleaning up London’s taxi fleet will play a significant part in our toxic air battle... It is important we financially support drivers to help them retire their oldest vehicles and upgrade to greener models”

Mayor Sadiq Khan

# Clean and green

Everything you need to know about taxi delicensing, the Ultra Low Emission Zone and what it means for your vehicles

With pollution in London a public health priority, Mayor Sadiq Khan is working hard to clean up the Capital. This includes making our taxi and private hire fleets the greenest in the world.

## Taxis

Taxis are a significant contributor to London’s toxic air quality and are responsible for 16 per cent of nitrogen oxides (NOx) and 26 per cent of particulate matter (PM) emissions from road transport in central London. From 1 January 2018, new diesel taxis will not be licensed in the Capital. Taxis presented for licensing for the first time will need to be Zero Emission Capable (ZEC), which means their carbon dioxide (CO<sub>2</sub>) emissions must be no more than 50g/km and they have a minimum 30-mile zero emission range. The maximum 15-year age limit for taxis will remain.

## Help with funding

The Mayor and TfL have launched the taxi delicensing scheme, a £42m fund to encourage the owners of the oldest, most polluting diesel black cabs to switch to cleaner models. The scheme will provide grants of up to £5,000 towards delicensing these vehicles. Owners of 10-year-old taxis may receive the full £5,000, scaling down to £1,200 for one aged between 14 and 15-years-old.

The three-year scheme aims to tackle air pollution and make the taxi fleet greener. The goal is for London’s entire road system to be zero emission by 2050.

The Government also offers a plug-in taxi grant of up to £7,500 to help with the costs of buying a new ZEC taxi. This will be available to the first 9,000 licensed in London up to 2020.

The scheme will run until 31 December 2020, subject to funding. More information will be available in future issues of OnRoute.

Go to [tfl.gov.uk/taxi-delicensing](http://tfl.gov.uk/taxi-delicensing)

Age of taxi from first DVLA registration	Payment amount
10 years	£5,000
11 years	£3,800
12 years	£2,800
13 years	£1,900
14 years	£1,200
15 years	Ineligible

## To apply for the scheme, you must:

- Own a TfL-licensed taxi that is between 10 and 15-years-old
- Be listed as the owner of the licensed taxi in the V5 log book registered on TfL’s records
- Have a current MOT and your taxi must be in a roadworthy state

## Private hire

The Mayor wants to introduce the ULEZ in central London next April – 17 months earlier than first proposed.

All PH vehicles will need to meet specific exhaust emission standards or pay an additional daily charge of £12.50 when travelling in the zone. Petrol cars, vans and minibuses must be Euro 4, while diesel cars, vans and minibuses must be Euro 6.

A ZEC vehicle is defined as having a zero emission range of at least 20 miles and must produce less than 75g/km CO<sub>2</sub>. There are three categories (see table on right).

## Car scrappage schemes

Many car manufacturers already have scrappage schemes where owners can get rid of their older, dirtier vehicles and be reimbursed against the cost of a new, cleaner one.

Now Ford, Toyota and Volkswagen have also launched schemes. Owners of all Ford cars and vans registered before 1 January 2010 will be offered discounts of between £2,000 and £7,000 depending on the new model chosen.

The Volkswagen scheme applies to any diesel vehicle that has emissions standards lower than Euro 5 and was registered before 2010. It is offering discounts from £1,800 up to £6,000.

Toyota’s scheme is open to vehicles more than seven-years-old, including Priuses, and could save drivers up to £4,000 on a new car.

All schemes run until 31 December 2017.

Go to [www.ford.co.uk](http://www.ford.co.uk)  
[www.volkswagen.co.uk/scrappage](http://www.volkswagen.co.uk/scrappage)  
[www.toyota.co.uk](http://www.toyota.co.uk)

## 1 January 2018 – 31 December 2019

All PHVs licensed for the first time during this period must have a Euro 6 petrol or diesel engine, or a Euro 4 petrol-hybrid engine.

## January 2020 – 31 December 2022

PHVs under 18-months-old being licensed for the first time will have to be ZEC. Older PHVs must have a Euro 6 engine when licensed for the first time.

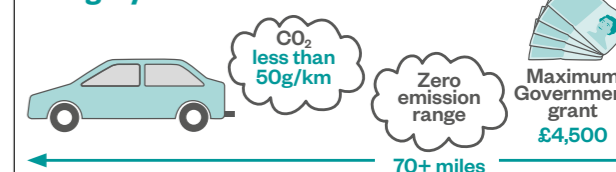
From 1 January 2023 All PHVs of any age will need to be ZEC when licensed for the first time.

## ZEC vehicle definition

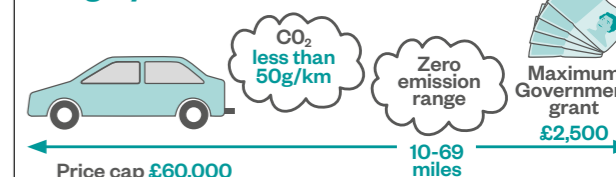


There are three categories

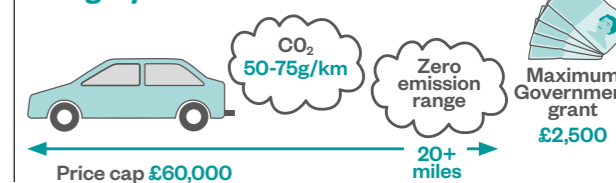
### Category 1



### Category 2



### Category 3



## Rapid chargers, charging times, taxis and private hire

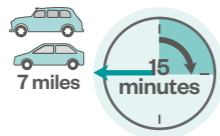
Charge times from empty to full

### Standard electric charger

Up to 7 kW  
6-8 hours



Up to 7 miles range from a 15 minute charge



### Fast electric charger

22 kW  
1 to 2 hours



20 miles range from a 15 minute charge

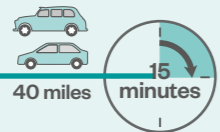


### Rapid electric charger

Up to 50 kW  
20 to 30 minutes

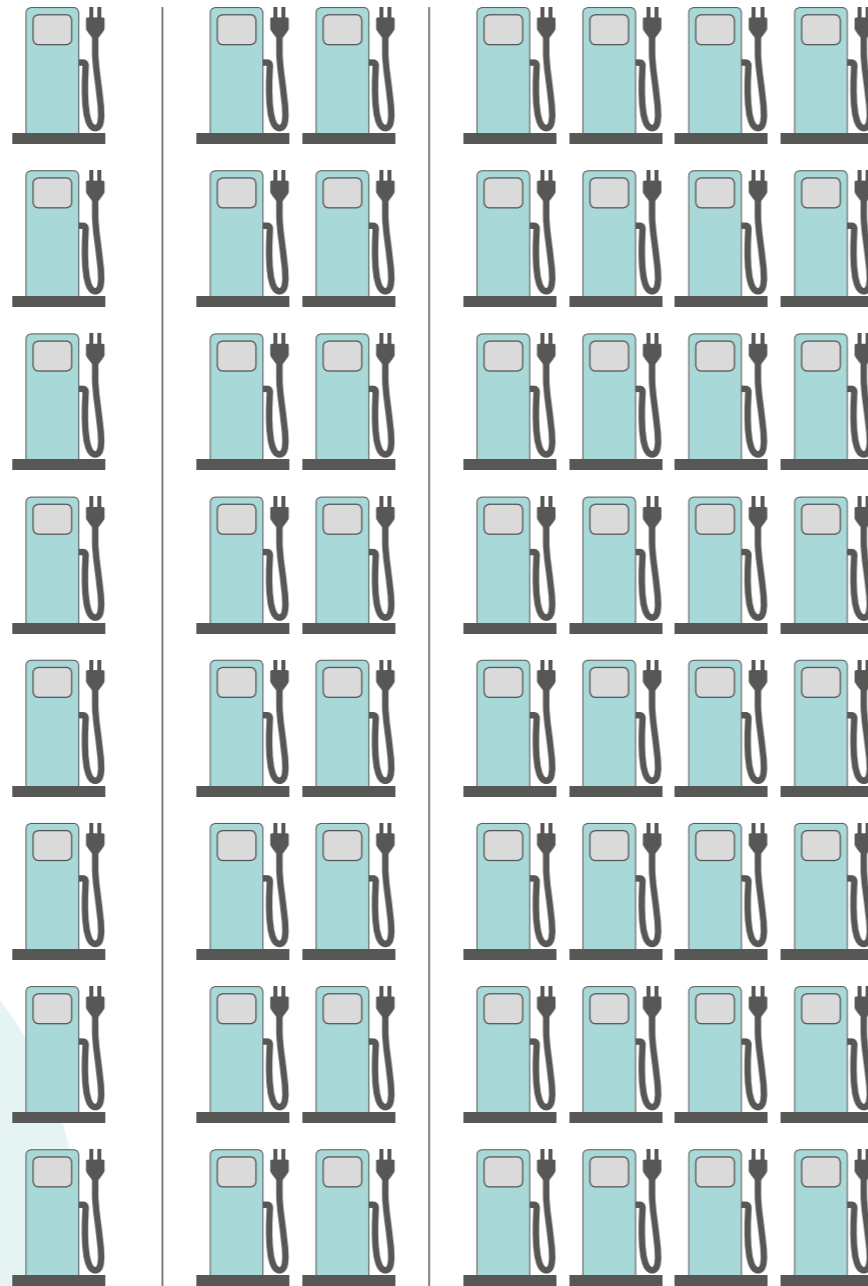


40 miles range from a 15 minute charge



← 2kW (actual mileage gains and time taken to charge will vary by vehicle model)

To help ZEC taxi and private hire drivers maximise fuel cost savings, TfL is expanding London's network of rapid electric vehicle charging points.



**75**  
installed  
by the end of  
**2017**

At least  
**150**  
by the end of  
**2018**

(90 for taxis)

At least  
**300**  
by the end of  
**2020**

(more may be required to meet demand)

## A tale of two taxis

There are several electric taxi models being developed, including the London Electric Vehicle Company's TX and the Nissan Dynamo.



### TX specifications

- Fully electric powertrain and small petrol generator
- Petrol range extending maintains battery level
- Turning circle: 7.62m
- Battery electric range: more than 70 miles and combined range with petrol generator of more than 400 miles
- Aluminium body ensures low weight while maintaining vehicle length
- Six passenger seats
- Mobile phone charging points
- Retractable wheelchair ramp
- Panoramic sunroof

### Nissan Dynamo specifications

- 80kW fully electric motor
- Turning circle: 10.6m
- Range: 106 miles
- Maximum speed: 76mph
- Battery type: laminated lithium ion
- Rapid charge port (allowing 50kW rapid charge)
- 6.6kW charger (home charging)
- Five rear seats
- Double-folded, easy-stow ramp
- Panoramic sunroof

## Do you know... about the T-Charge?

Set to be introduced on 23 October, the T-Charge will act as a stepping stone ahead of the launch of the ULEZ.

It's an additional daily £10 supplement to the Congestion

Charge payable by owners of older, more polluting vehicles who drive in the existing zone.

All petrol vehicles will need to meet Euro 4 standards, while diesel models will need to meet Euro 6 (mainly those

registered before 2008).

Both taxis and PH vehicles will be exempt from the T-Charge

For more information, go to [tfl.gov.uk/T-Charge](http://tfl.gov.uk/T-Charge)

# Keeping the city's air clean

How one company is leading the way in providing an environmentally-friendly private hire service



The hydrogen-powered Toyota Mirai

**“ For all our sakes what we now need to achieve is more zero emission cars so they become the norm rather than the exception ”**

Julia Thomas, MD Green Tomato Cars

**G**reen Tomato cars was launched in 2006 by friends Jonny Goldstone and Tom Pakenham, who wanted to create an eco-friendly private hire service. They were both working in law firms at the time but left to join other private hire operators before opening their first office in West London with four hybrid cars and a handful of employees.

More than a decade later, the firm – part of the Transdev group – employs 700 drivers in the Capital.

Managing director, Julia Thomas, says: ‘We are always trying to improve and build on what we did yesterday. We pride ourselves on our innovative approach. A decade ago we were the first private hire company to use hybrid vehicles in London. We were also the first to put air pollution sensors in our vehicles and the first to offset all our emissions. In fact, we double offset. After every trip we calculate the job mileage and fund carbon reduction projects accordingly.’

In 2014 the company added the sleek Tesla Model S to its fleet and in 2016 it introduced London’s first hydrogen fuel cell PH vehicles. Its two Toyota Mirai saloons use hydrogen gas, stored in tanks behind the rear seats and under the back axle, to generate electricity. The only by-product is water (pictured top right).

Says Julia: ‘The Mirais have fitted into our fleet in a seamless way in large part due to the vehicle’s range of 300 plus miles and the fact that refuelling time

is comparable to our hybrid cars. We’ve had great feedback from both the passengers and drivers who enjoy the quiet, comfortable ride, love the fact the vehicle is zero emission and are also interested in the technology.’

This year the company has been steadily increasing its fleet of ZEC vehicles and has been trialling Hyundai’s new IONIQ full-electric model, which lets the driver choose from hybrid, plug-in hybrid or full-electric modes – the world’s first car to offer all three of these options.

As far as the company is concerned, the future really is green. ‘Expanding our zero emission fleet is a business priority so we are always looking for ways to grow our electric fleet either through electric battery or hydrogen fuel cell vehicles,’ explains Julia. ‘One challenge is ensuring the refuelling and recharging infrastructure is comprehensive enough to maintain our great customer experience and smooth and efficient operations.’

‘With air pollution being the major public health issue in London, for all our sakes what we now need to achieve is more zero emission cars so they become the norm rather than the exception. Green Tomato Cars is proud of the leadership it is showing on this in the private hire market.’



For more information, go to [www.greentomatocars.com](http://www.greentomatocars.com) or email [marketing@greentomatocars.com](mailto:marketing@greentomatocars.com)

## » Then

- Company founded: 2006
- Number of cars: four
- Number of drivers: four (two still work with the company today)
- Number of corporate clients: one

## » Now

- Offices in: Isleworth, Washington DC, USA and Paris
- Vehicles in London:
  - Toyota Prius
  - Volkswagen Sharan
  - Volkswagen CC
  - Mercedes E Class
  - Mercedes S Class
  - Tesla Model S
  - Toyota Mirai
- Number of drivers in London: 700

# Emission control

London's dirty air affects us all. OnRoute asks what people really think about plans to reduce emissions

“I've been driving private hire for four years. It's a difficult thing but it's good that the Government is phasing out diesel and petrol cars in favour of hybrid and electric. I think 2040 is too far away, maybe 2025 would be better. I drive a petrol hybrid and have had it for six months. It's a good car and the fuel consumption is very low”

Mohammed Farooq, 47,  
private hire driver



Laura Waite, 34, product manager for a tour operator

'I think it's brilliant the Government wants to ban petrol and diesel cars by 2040 but they need to look seriously at introducing more charging stations for electric vehicles because there aren't enough.'



Sukhjot Singh Summan, 32, security officer

'Everyone's got to do their part to make the world a greener place to live in. Fuel prices are only going to get higher. Banning diesel and petrol cars is the way forward. They should do it sooner as 2040 is a long way away.'

James Eckersley, 45, director of a seafood business, and Kirsteen Eckersley, 44, cabin crew

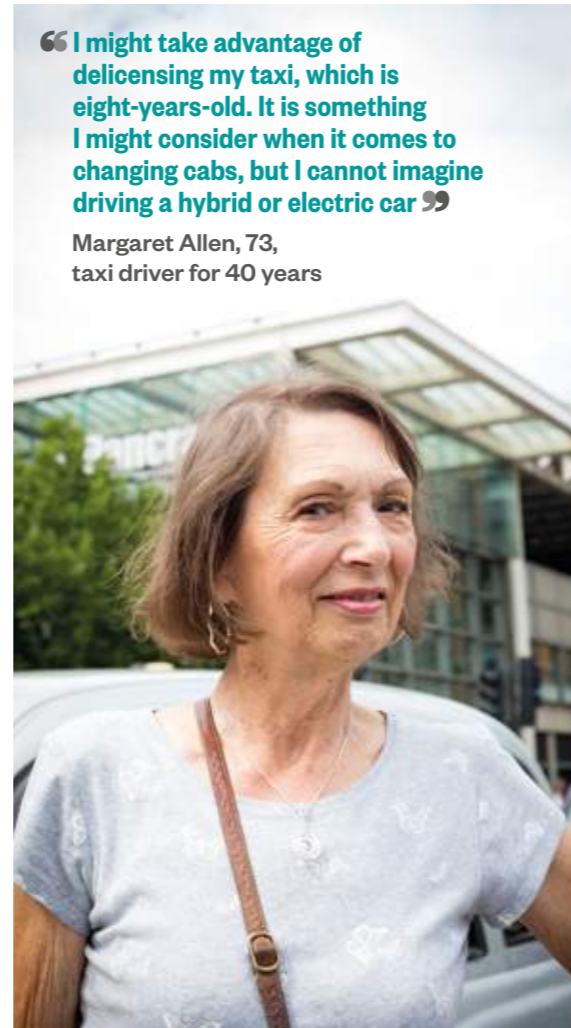
James: 'I have pretty mixed views on the ban on diesel and petrol. I don't see us driving electric any time soon. We live in the north of Scotland and are down here for a wedding. We need to travel bigger distances and an electric car is not going to do that for us.'

Kirsteen: 'You definitely notice a big difference in air quality when you come to London. It feels much cleaner and fresher where we live.'



“I might take advantage of delicensing my taxi, which is eight-years-old. It is something I might consider when it comes to changing cabs, but I cannot imagine driving a hybrid or electric car”

Margaret Allen, 73,  
taxi driver for 40 years



Efe Ezekiel, 38,  
manager of a youth mentoring organisation

'I think everybody should be given a choice. I know it probably would be better for our air pollution, but at the end of the day, we're all individuals and it should be left to everyone to decide what car they want to drive and how they want to live in this world.'



John Beesley, 74, and Claire Clarke, 78, both retired

John: 'We don't live in London, but at our local school we see parents waiting for their children with their engines running, pumping out these noxious fumes from their cars.'

Claire: '2040 is too late. Think about babies in pushchairs. They face the traffic all the time. And it's a good idea to ban licences for diesel cabs too.'



Steven Deacon, 53, black taxi driver for 24 years

'I think getting rid of diesel and petrol cars by 2040 is a good idea. I imagine by that time most cars will be electric anyway. My taxi is diesel and is three-years-old. I'm a while away from thinking about changing cabs, but when the time comes, I would consider taking advantage of any grants to help.'

Conveniently, all London taxis now accept cash, card and contactless

Search TfL Improvements



MAYOR OF LONDON

# Lights, camera... cab please!

London's iconic black taxis have had starring roles in ads, music videos, photoshoots and blockbuster films. OnRoute meets the man behind the appearances.

It's a bit of a cliché to say that cab drivers like to boast about the famous faces they've had in their cab, but for Gary Zylberszac, who runs The London Cab Company, it really is part of the day job.

Gary got his 'bill' in 1982 at the age of 21 and drove his fair share of celebrities – from Tom Jones and Diana Rigg to Jonathan Ross and Gary Barlow – until a random knock on the door took his business in a new direction.

In 1998, a TV company was looking for a 1930s semi-detached house as a location and approached Gary who lived nearby. This was a new world to him and he quickly spotted an opportunity. Not for his house, but for his taxi. He started supplying action cabs to production companies

and has never looked back. His TV resumé to date includes EastEnders, Holby City, Silent Witness, Extras, Sherlock and The Night Manager.

Not content with success on the small screen his cabs (and often his driving skills) have featured in films including The Bourne Ultimatum, Mamma Mia, Paddington, Absolutely Fabulous: The Movie and The Mummy. And the whole world was watching when Gary's cab turned into Buckingham Palace taking Daniel Craig to meet The Queen during the opening ceremony of the 2012 London Olympics.

So how does nearly 20 years in the entertainment world feel? We caught up with Gary to find out...



Above: Out on location

**“ In June, I drove Adele from the Wembley Stadium stage. I had to reverse from the players' tunnel on a specially-constructed road and pick her up while she was still singing. It was pitch black with security and production crew all around and Adele hanging out of the back window. It was a somewhat worrying four minutes ”**



**“ I worked with Pierce Brosnan for Mamma Mia the Movie, doing the scene where he jumped in the cab in New York to go to the airport. In reality, it was shot at the Lloyds building in the City. I got the gig because at the time I was running a couple of New York cabs as part of my stable of taxis ”**

**Q Do you do all the driving appearances yourself?**

**A** I do what I can, but if you're in a series with six episodes, with a couple of cabs needed in each one, you can't be every cabbie in London, so I have a very reliable crew of drivers.

**Q Do you still take fares as well as media bookings?**

**A** Yes, I still go out in the cab but not a great deal. The average cab does 30,000 miles a year and I have a two-year-old cab that has only just clicked over 20,000 miles.

**Q Any bucket list shows you always wanted to work on?**

**A** When the series 24 was coming to shoot in London, one of my customers was supplying the vehicles. I begged him to get me on the job and I became Secret Service Driver No 1 in the presidential convoy for President Heller, not in one of my cabs, but in an American vehicle.

**Q Did it live up to expectations?**

**A** I was as excited as a kid in a sweet shop but, guess what, it was the same as all the other shoots I'd been on! Lots of waiting around and repeating what you do several times until everyone is happy. It's just another job.

**Q Which star do you feel most privileged to have shared a set with?**

**A** In Night at the Museum: Secret of the Tomb, the characters run across the road in front of my cab, just as the camera crosses the other way, so timings were a bit tight. We had to do it a few times and, between takes, Robin Williams was standing in front of the cab with the crew. I think it was one of his last films, as he sadly died a few weeks later.

**Q What about a laugh-out-loud moment?**

**A** Once I was crossing a set with actor Wesley Snipes, just me and him walking down a road in Wales, and there were all these girls screaming at us from nearby office buildings. I apologised to him and told him it happens wherever I go!



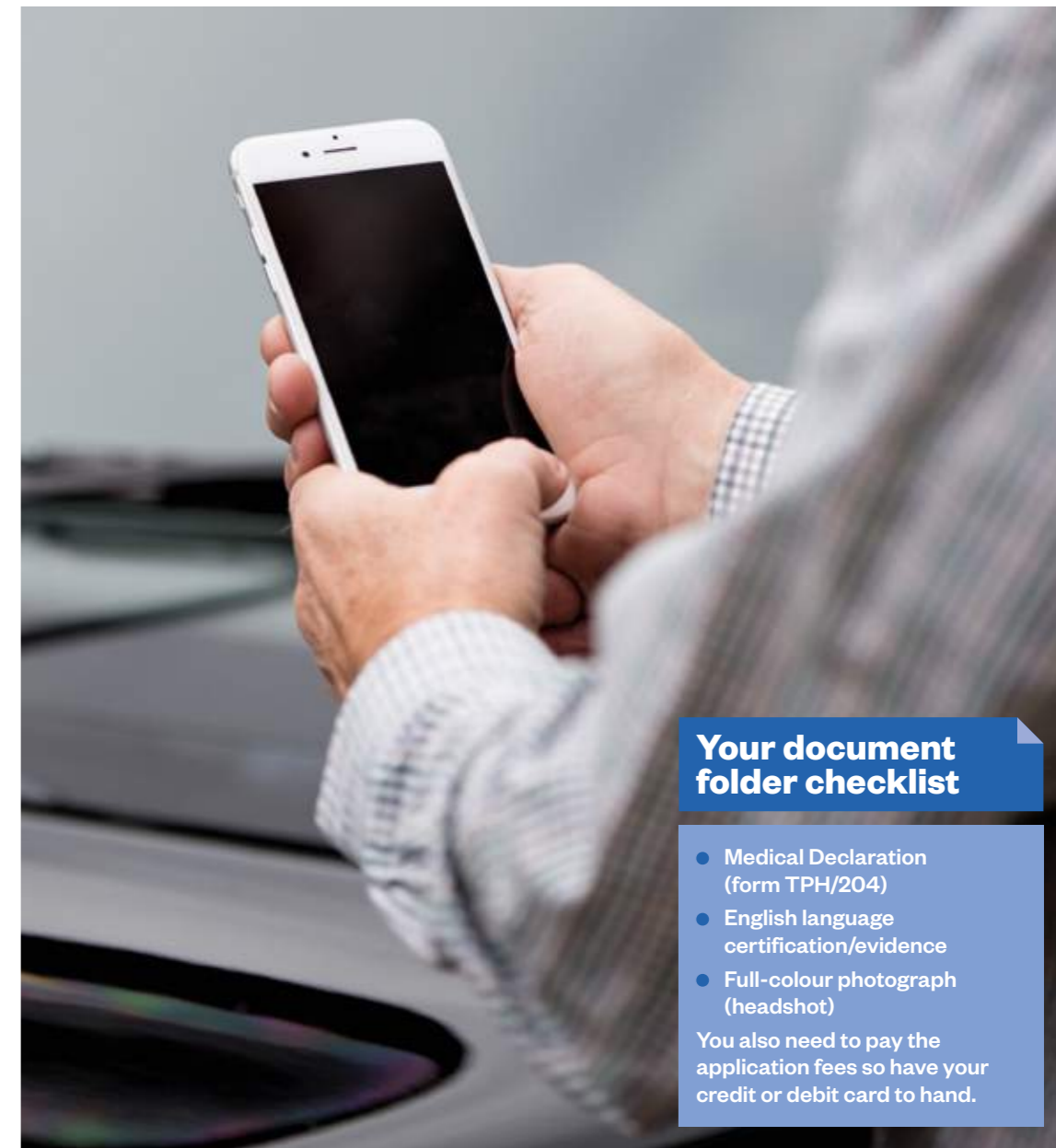
Above: Singer Rita Ora shooting a campaign for Rimmel London  
Below: Filming interior shots of a taxi



**» Gary's current cast list available for starring roles**

- 1955 FX3
- 1974 FX4
- 1990 Fairway
- 1998 TX1 and TX4

●●● Find out more at [www.thelondoncabcompany.co.uk/](http://www.thelondoncabcompany.co.uk/)



### Your document folder checklist

- Medical Declaration (form TPH/204)
- English language certification/evidence
- Full-colour photograph (headshot)

You also need to pay the application fees so have your credit or debit card to hand.

# It's easy online

Applying for, or renewing, your taxi or private hire licence online is simple

## » First...

Register for an online account using the web portal at [tph.tfl.gov.uk/TfL/home.page](http://tph.tfl.gov.uk/TfL/home.page)

### You will need:

- A valid email address that your account will be linked to
- A memorable password to sign in with
- A security question and answer that you will have to provide when signing in to your account

Your password can always be reset using the forgotten password link or you can call the taxi and private hire team on 0343 222 4444 and provide additional security information to have it reset.

## Uploading your documents

Make sure you have all your documents saved in a folder on your laptop or desktop ready to upload.

Applications are frequently left incomplete because people attempt to upload several pages of a document as individual files but miss out some. If you do have documents that are more than one page, such as your Medical Declaration (form TPH/204), then scan them all and save them as one document.

The private hire regulations have recently changed and include a new English language requirement (p11). You can upload your English language evidence along with other evidence for your application.

You'll also need a recent, clear, full-colour photograph. Make sure you upload it to your documents folder.

**“ New applicants should carefully read through the advice on the website. This tells them what documentation they'll need to submit an application. Trying to submit an application more than once can cause delays and lead to multiple charges being incurred ”**

## Existing licensees

If you are registering for an online account and already hold a valid London taxi driver or PH driver licence, you need to answer yes to the question under the heading **for existing licence holders**. This is really important as it will allow your online account to be correctly linked to your London taxi or PH driver licence. If you don't, you could end up registering as a new driver. A number of people have done this and it can cause delays in the processing of their renewal applications.

After you have selected yes you will be asked to provide a customer online reference number and your driver licence number in the drop down boxes. These numbers are provided in the renewal pack that is sent out to existing licensees when it is time for them to renew.

Make sure you enter the customer online reference number and the driver licence number correctly. If you don't, your account cannot be successfully linked to your licence and this can cause various issues.

If you are an existing licensee and think you may have registered as a new applicant, or submitted a new application by mistake, please call the taxi and private hire team who will be able to assist you.

••• If you need help with your online application, email [tphonlineenquiries@tfl.gov.uk](mailto:tphonlineenquiries@tfl.gov.uk) or call 0343 222 4444 and select options 1 and 3.

For assistance with photograph and DBS-related questions, you can also book an appointment to visit the counter service at Chancel Street (behind 230 Blackfriars Road).

# Travelling with a canine companion

London's taxis and PH vehicles offer independence and freedom to many people, including those with assistance dogs



**A**lthough most drivers are aware of their responsibilities and offer an excellent service, some may not know all the facts. They may not want to carry dogs because they see them as a safety risk, are scared of them or feel they are a health hazard.

These fears are all unfounded and Natasha Fleming, from Guide Dogs UK's London mobility team says drivers should put themselves in the disabled person's position. 'Imagine you were turned away by a driver or asked to pay an extra fare, for no good reason. Unfortunately this happens all too often to our assistance dog owners and it is an incredibly stressful and difficult experience.'

Natasha also points out that assistance dogs are highly-trained, have regular health checks and are chosen because they are naturally calm.

## » Did you know...?

- Taxi and private hire drivers can't refuse a passenger because they have an assistance dog. Drivers could risk losing their licence or face a fine of up to £1,000
- Passengers can't be charged more for a taxi or private hire journey because they have an assistance dog
- Assistance dogs must be seated with their owners at all times

Since February 2015, TfL has successfully prosecuted 24 private hire drivers for not accepting assistance dogs, resulting in more than £7,000 in fines and costs. Charities working for disabled groups have welcomed these prosecutions.

'We wholeheartedly support licensing authorities using the powers they have to prosecute drivers who flout the law by refusing to take assistance dogs, and we want tougher sentences for drivers who turn away assistance dog owners,' says Natasha. 'We also urge all owners who are refused access to alert the local licensing authority, as we believe there is an issue around the under-reporting of cases.'

TfL has made it easier for customers to report any problems with taxi or private hire journeys via the website or by calling 0343 222 4000.

**There are a number of different types of assistance dogs recognised in the UK:**

- Guide Dogs
- Hearing Dogs for Deaf People
- Dogs for Good
- Canine Partners
- Dog AID
- Support Dogs
- Medical Detection Dogs

In addition, there are people who have trained their own dogs.



**“ We take a zero tolerance approach to drivers refusing to carry passengers accompanied by assistance dogs and we encourage customers to report any incidents to us, so we can investigate and take the appropriate regulatory action ”**

Helen Chapman, TPH's general manager



## Need more help?

TfL has produced a number of short films to help disabled people get around the Capital. Go to [tfl.gov.uk/transport-accessibility](http://tfl.gov.uk/transport-accessibility)

You can find out more about accessibility and guidance for drivers at [tfl.gov.uk/tph](http://tfl.gov.uk/tph). Just click on 'ranks, regulation and policy'

If you have further questions, contact TfL using the online form at [tfl.gov.uk/tphcomments](http://tfl.gov.uk/tphcomments)

You can also email [tph.enquiries@tfl.gov.uk](mailto:tph.enquiries@tfl.gov.uk), or write to London Taxi and Private Hire, PO Box 71087, London SE1P 5TH

To talk to someone, call 0343 222 4444 between 08:00 and 18:00, Monday to Friday



# A guide to assistance dogs for private hire drivers

Passengers with assistance dogs use private hire services to make their way around the Capital. In the UK there are more than 7,000 active working dogs. Assistance dogs are your passengers too.

## Guide Dogs

'We wear **white** harnesses with **yellow** fluorescent stripes.'

Guide dogs are for young people and adults who are blind or partially sighted.



## Hearing Dogs for Deaf People

'We wear **burgundy** jackets.'

Hearing dogs are for adults and children with hearing impairments.



## Dog AID (Assistance in disability)

'We wear **red** jackets.'

Dog AID dogs are for physically disabled adults.



## Canine Partners

'We wear **purple** jackets.'

Canine Partners' assistance dogs are for physically disabled adults.



## Dogs for Good

'We wear **green** jackets.'

Dogs for Good assistance dogs are for people with physical disabilities, or children with autism.



## Support Dogs

'We wear **blue** jackets.'

Assistance dogs for physically disabled adults, seizure alert dogs for people with epilepsy, and autism assistance dogs for children with autism.



## Medical Detection Dogs

'We wear **red** jackets.'

Medical detection dogs are for adults and children with complex health conditions.



Did you know it is against the law to refuse or charge a passenger more because they have an assistance dog? Taxi drivers or private hire drivers and operators doing so could risk losing their licence or facing a fine.

# Letters

Email us at [OnRoute@tfl.gov.uk](mailto:OnRoute@tfl.gov.uk). We will print a selection of emails every issue - and there's a £20 Amazon voucher on offer for the best.

## Star letter

### Private hire coverage

I am sorry to say that after reading most issues of OnRoute, I find it biased to the needs of TfL and is always featuring taxi info. Please tell me why if we, the minicab trade, outnumber the taxi trade by four to one you are always leaning towards the minority group? Surely it would be more sensible to give equal billing or even just let the minicab trade know what is going on in their world?

Could you not be just a little more transparent towards the PH trade, that has no real body to inform it of what's occurring unlike the taxi papers.

Geff Per (via email)

As TfL licenses both the taxi and private hire trades in London we try to keep the editorial in OnRoute as even-handed as possible. In each issue we aim for a mix of taxi and private hire features, as well as those that are of equal interest to both. Unfortunately, this is not always possible as it depends on what the big issues are at the time.

TfL meets regularly with private hire trade representatives, including the GMB Union.

We would welcome more private hire stories in the magazine, so please, if you or any other PH drivers have anything you would like us to cover, let us know at [OnRoute@tfl.gov.uk](mailto:OnRoute@tfl.gov.uk)



## Sitting idle

On the subject of idling engines and the resulting increase in pollution, would it not be wise to look at changing traffic light phasing to help traffic flow easier in certain areas - such as Blackfriars Bridge (northbound) and Embankment/Upper/Lower Thames Street (eastbound) - that are very congested all day long.

David Bowen (via email)

When new road schemes are implemented we carry out an extensive review of the traffic signal timings. This takes into account the change in traffic patterns that happen throughout the day. Wherever possible we use adaptive technology that alters the traffic light timings in response to the changing demands.

Our 24-hour control centre continually monitors the network but we do appreciate that at busy times some congestion is unavoidable.

Glynn Barton, interim director of road space management at TfL

## From our Twitter feed



### >> We say...

Taxi drivers can find out about card payment device suppliers on our website: [tfl.gov.uk/cards-in-taxis](http://tfl.gov.uk/cards-in-taxis)

We have guidance for drivers on mounting navigation devices without obstructing the

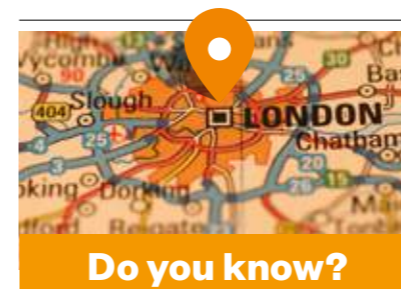
windscreen at [tfl.gov.uk/safetytips](http://tfl.gov.uk/safetytips)

### >> You say...

@TfLTPH if the new electric cab is zero emission capable, why does it still need to be renewed every 15 years?

Steven Brown via Twitter  
The 15-year age limit for taxis is because of their heavy use and

because new vehicle safety and passenger amenity features are introduced regularly



## Do you know?

- 1 What is the UK's most popular car colour?
- 2 How long would it take to drive to the moon?
- 3 How many parts does the average car have?
- 4 What is the best-selling car of all time?
- 5 What percentage of London taxi drivers are women?

1. White 2. Six months - if you drove in a straight line at 60mph 3. 30,000 4. The Toyota Corolla 5. 2.2 per cent

# Calendar

## September

## October

## November



**14 September**  
Micky Flanagan  
O2 Arena (until 16 September)

**20 September**  
100% Design  
2017 event  
Olympia (until 23 September)

**22 September**  
National Wedding  
Show 2017  
Olympia (until 24 September)

**23 September**  
Shine Night Walk  
2017  
(Southwark Park - streets of central London - Old Billingsgate)

British Basketball  
All-Stars  
Championship  
O2 Arena (until 24 September)

Hospitality in  
the Park and  
Tranzmission  
Finsbury Park  
(until 24 October)

ATP World  
Tour finals 2017  
(Tennis)  
O2 Arena (until 24 September)

Saracens vs Sale  
Sharks rugby  
match  
Allianz Park

**24 September**  
Japan Matsuri  
event  
Trafalgar Square

Baltimore Ravens  
vs Jacksonville  
Jaguars (NFL)  
Wembley  
Stadium

Ealing half  
marathon  
Ealing

**27 September**  
Lorde  
Alexandra Palace

England vs West  
Indies cricket  
match (One Day  
International)  
Oval

**29 September**  
Cake and Bake  
Show  
ExCeL Arena  
(until 1 October)

I Love  
the 90s  
Wembley Arena

**30 September**  
Nick Cave and  
The Bad Seeds  
O2 Arena

NFL on Regent  
Street  
Regent Street  
pedestrianised



**1 October**  
Olympia  
Beauty Show  
incorporating  
Nailympia  
Olympia (until 2 October)

New Orleans  
Saints vs Miami  
Dolphins (NFL)  
Wembley  
Stadium

**2 October**  
Restaurant Show  
and Conscious  
Hospitality Show  
2017  
Olympia (until 4 October)

**4 October**  
Mid Autumn  
Festival  
(Chinatown)  
Central London

**6 October**  
Runway 2017  
event  
ExCeL Arena  
(until 8 October)

**7 October**  
Salon  
International  
ExCeL Arena  
(until 9 October)

**8 October**  
Saracens vs  
Wasps rugby  
match  
Allianz Park

Royal Parks  
Foundation Half  
Marathon  
(Hyde Park  
Corner - Whitehall -  
Trafalgar  
Square -  
The Strand -  
Melbourne Place -  
Pall Mall East -  
Cockspur Street),  
Westminster

**9 October**  
Lady Gaga  
O2 Arena  
(and 11 October)

**10 October**  
Lady Antebellum  
O2 Arena

**13 October**  
The Chocolate  
Show London  
2017  
Olympia  
(until 15 October)

The Tenderloins  
Comedy Troupe  
O2 Arena

**15 October**  
J. Cole  
O2 Arena

**17 October**  
Neil Diamond  
O2 Arena  
(and 19 October)

**18 October**  
Emeli Sandé  
O2 Arena

**19 October**  
Diwali  
Celebrations  
Neasden Temple

**20 October**  
The Baby Show  
2017  
Olympia

Festival of Life  
event  
ExCeL Arena

**22 October**  
Metallica O2  
Arena  
(and 24 October)

Arizona Cardinals  
vs Los Angeles  
Rams (NFL)  
Twickenham

**26 October**  
Little Mix  
O2 Arena

**28 October**  
Saracens vs  
London Irish  
rugby match  
Allianz Park

Daryl Hall and  
John Oates  
O2 Arena  
(and 29 October)

**29 October**  
Minnesota Vikings  
vs Cleveland  
Browns (NFL)  
Twickenham

**30 October**  
Spirit of  
Christmas  
incorporating the  
Luxury Travel  
Fair 2017  
Olympia

**2 November**  
John Bishop  
O2 Arena  
(and 3 November)

Brockwell Park  
fireworks display  
Brockwell Park

The Regent Street  
Motor Show  
Regent Street

Barbarians vs  
New Zealand  
rugby match  
Twickenham

**5 November**  
Clapham  
Common  
fireworks display  
(tbc)

**10 November**  
Stylist Live 2017  
Olympia (until 12  
November)

**11 November**  
Lord Mayor's  
Show  
City of London

England vs  
Argentina rugby  
match  
Twickenham

**12 November**  
Remembrance  
Day (Whitehall)  
Central London

World Tour finals  
2017 (Tennis)  
O2 Arena



# 2<sup>nd</sup>

