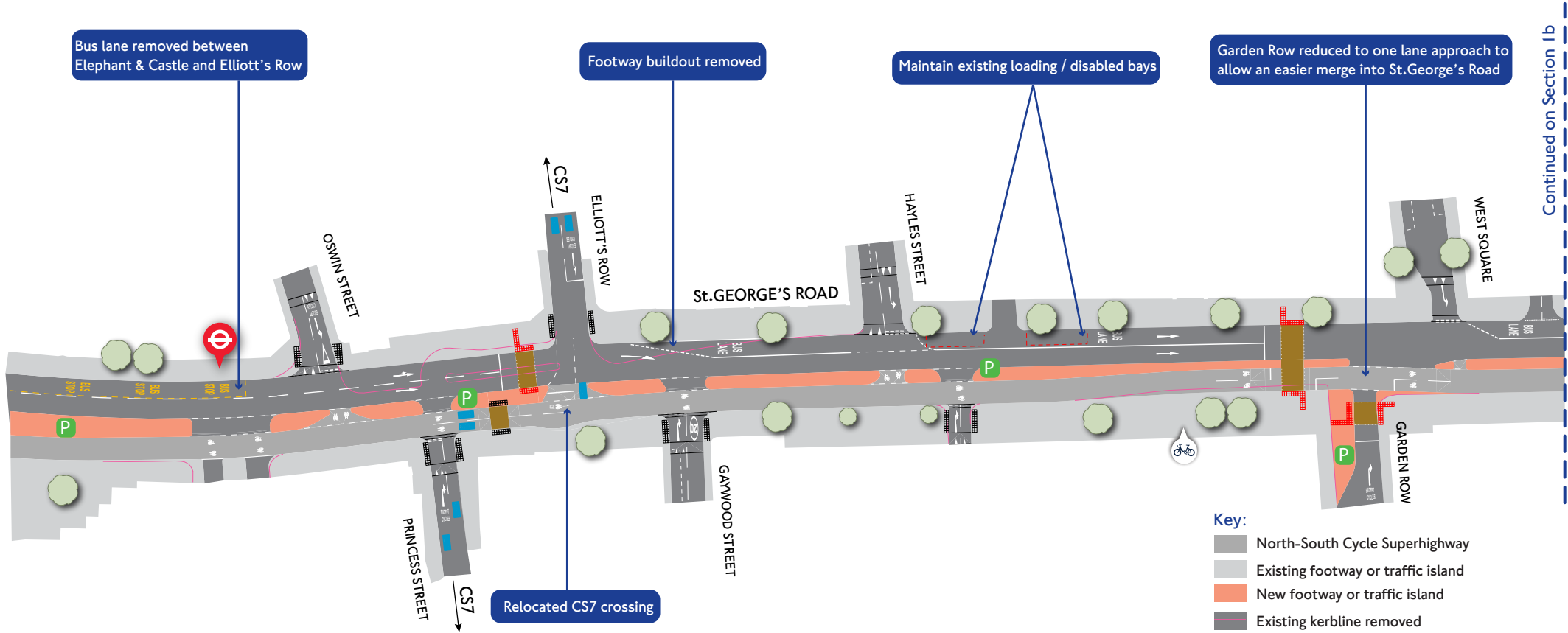


North-South Cycle Superhighway Section 1a – St. George’s Road



Refer to Elephant & Castle northern roundabout consultation



Bus lane removed between Elephant & Castle and Elliott's Row

Footway buildout removed

Maintain existing loading / disabled bays

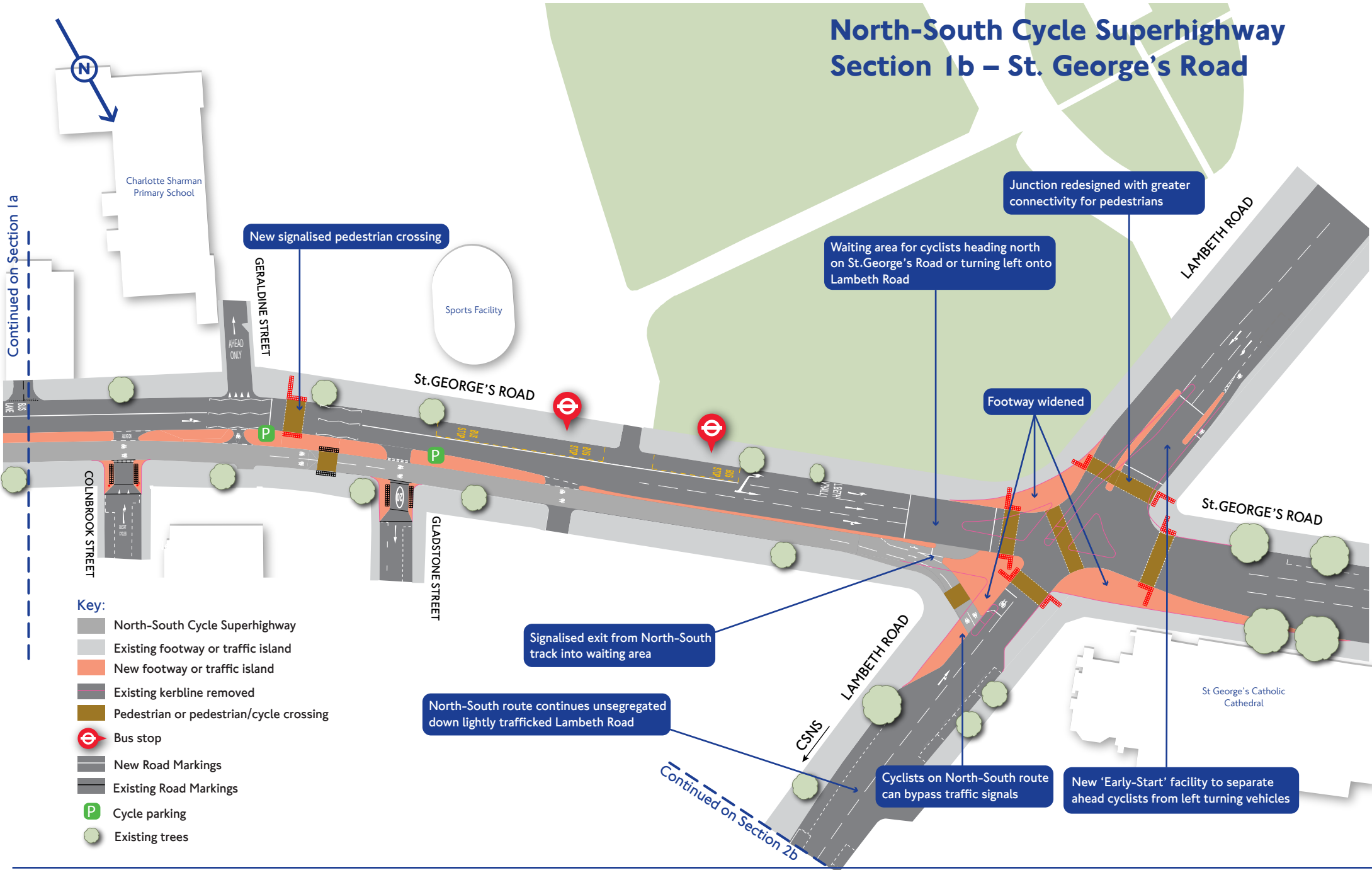
Garden Row reduced to one lane approach to allow an easier merge into St. George's Road

Relocated CS7 crossing

Continued on Section 1b

- Key:**
- North-South Cycle Superhighway
 - Existing footway or traffic island
 - New footway or traffic island
 - Existing kerbline removed
 - Pedestrian or pedestrian/cycle crossing
 - Barclays Cycle Hire docking station
 - Bus stop
 - New Road Markings
 - Existing Road Markings
 - Cycle parking
 - Existing trees

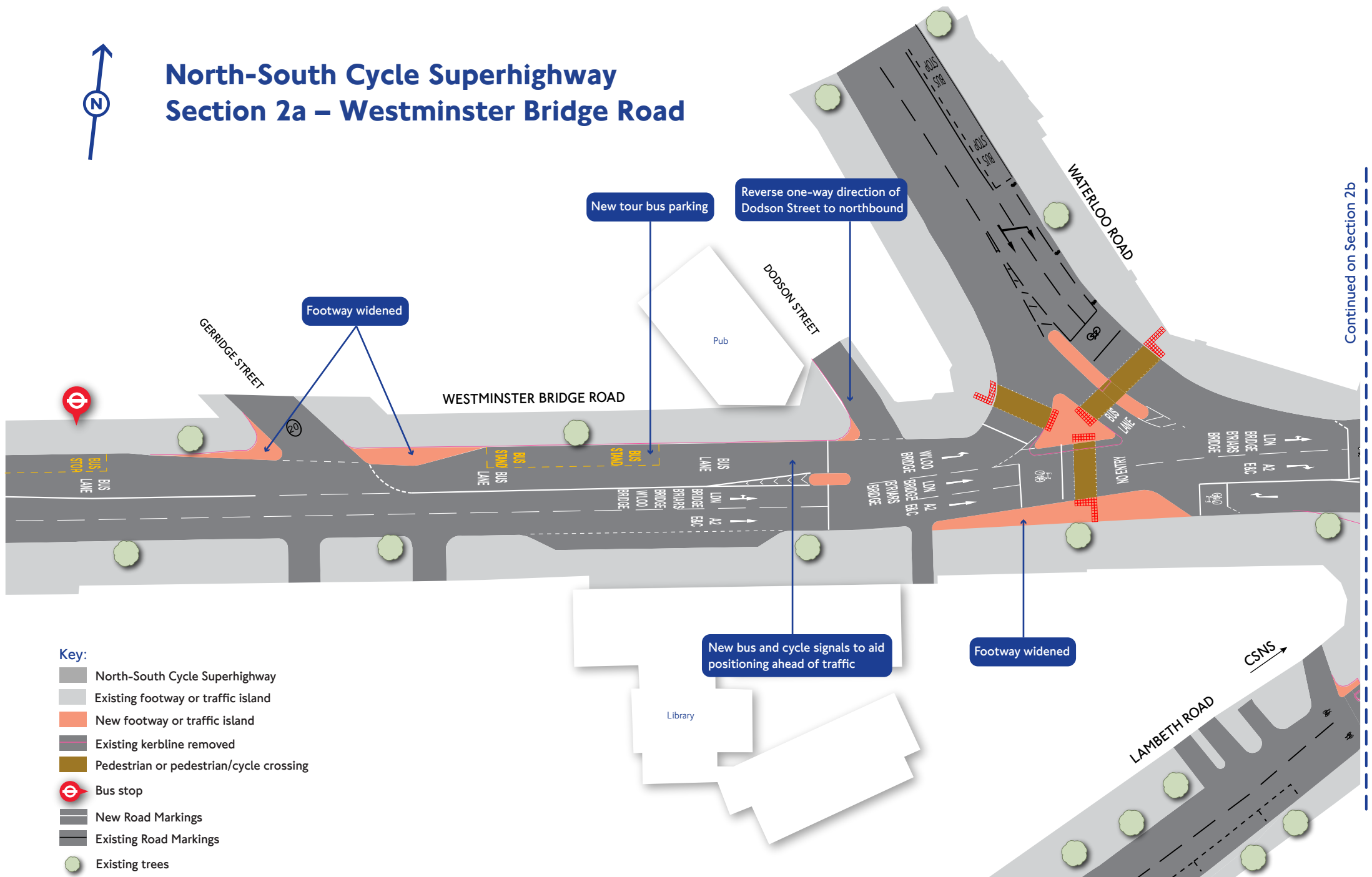
North-South Cycle Superhighway Section 1b – St. George's Road



- Key:**
- North-South Cycle Superhighway
 - Existing footway or traffic island
 - New footway or traffic island
 - Existing kerblines removed
 - Pedestrian or pedestrian/cycle crossing
 - Bus stop
 - New Road Markings
 - Existing Road Markings
 - Cycle parking
 - Existing trees



North-South Cycle Superhighway Section 2a – Westminster Bridge Road



Continued on Section 2b

- Key:**
- North-South Cycle Superhighway
 - Existing footway or traffic island
 - New footway or traffic island
 - Existing kerbline removed
 - Pedestrian or pedestrian/cycle crossing
 - Bus stop
 - New Road Markings
 - Existing Road Markings
 - Existing trees

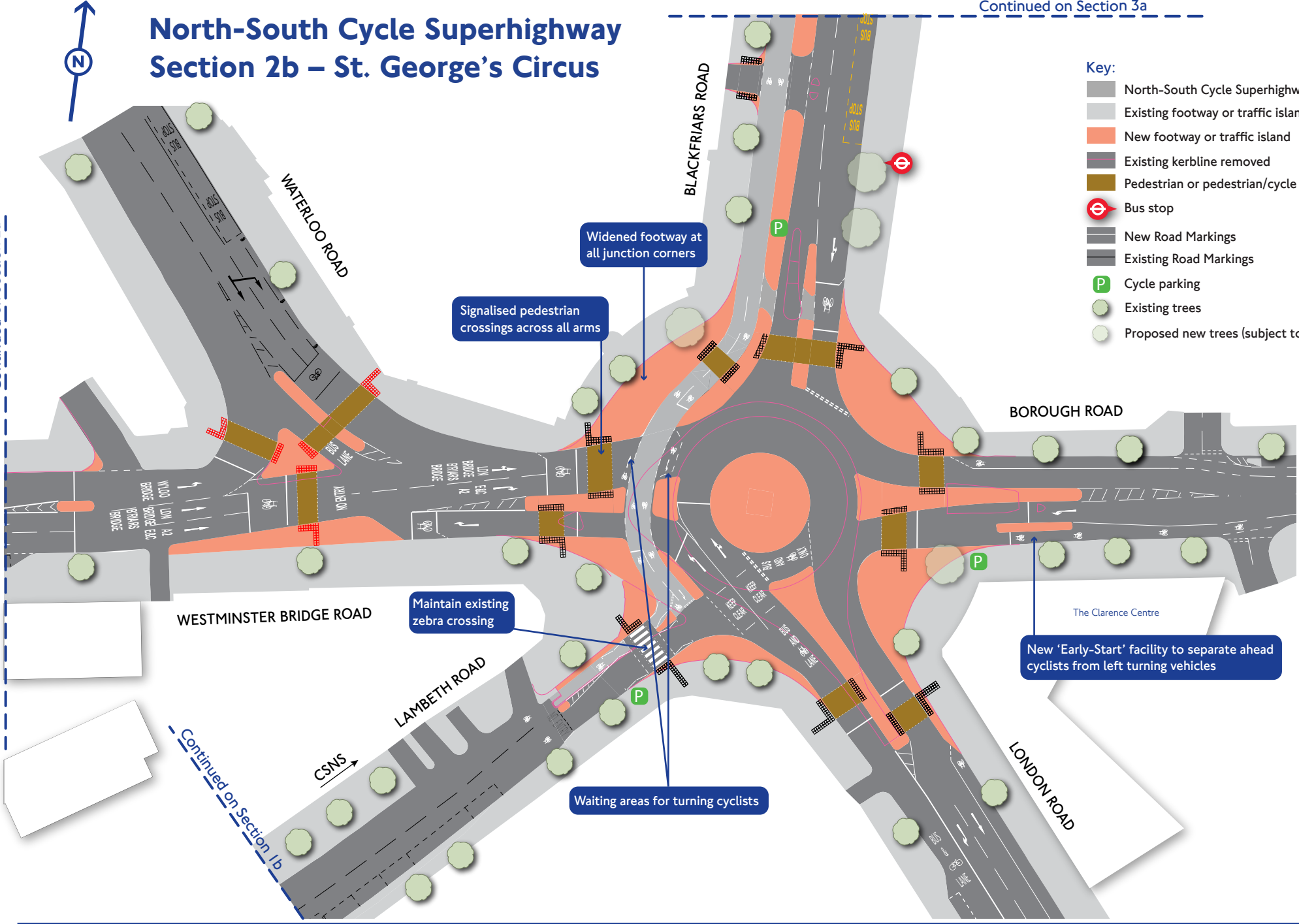
North-South Cycle Superhighway Section 2b – St. George's Circus



Continued on Section 3a

- Key:**
- North-South Cycle Superhighway
 - Existing footway or traffic island
 - New footway or traffic island
 - Existing kerbline removed
 - Pedestrian or pedestrian/cycle crossing
 - Bus stop
 - New Road Markings
 - Existing Road Markings
 - Cycle parking
 - Existing trees
 - Proposed new trees (subject to further investigations)

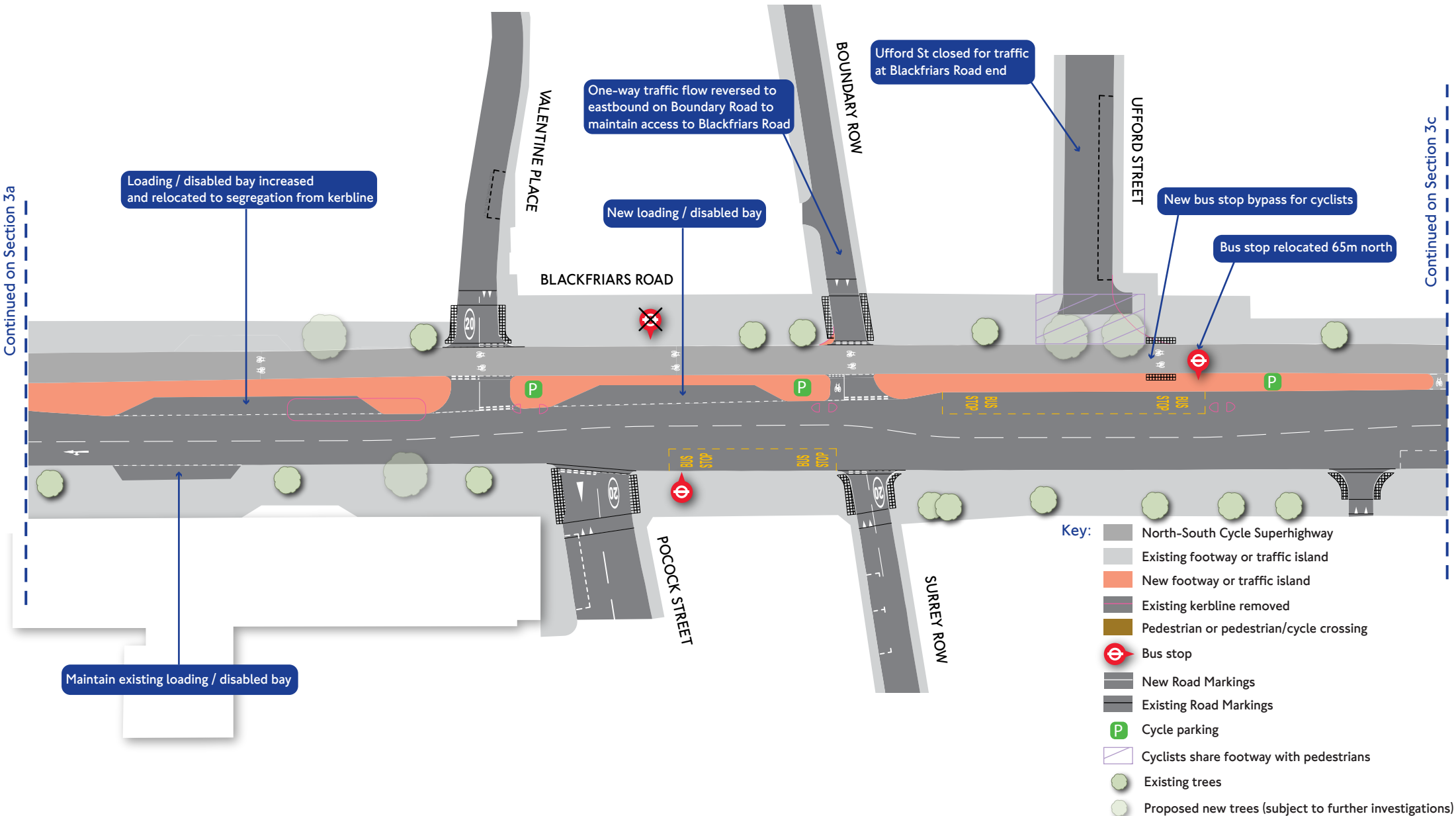
Continued on Section 2a



Continued on Section 1b



North-South Cycle Superhighway Section 3b – Blackfriars Road

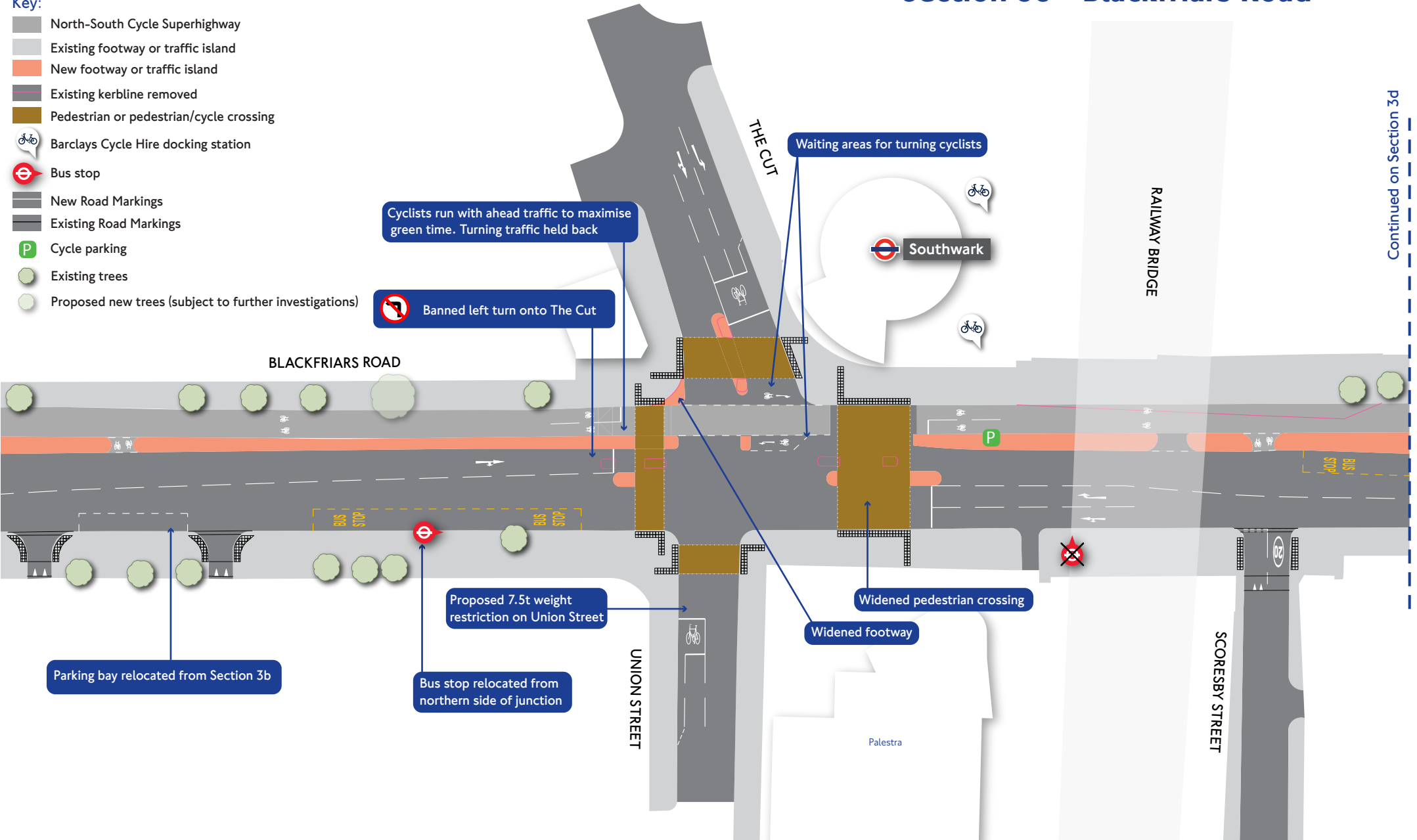


North-South Cycle Superhighway Section 3c – Blackfriars Road



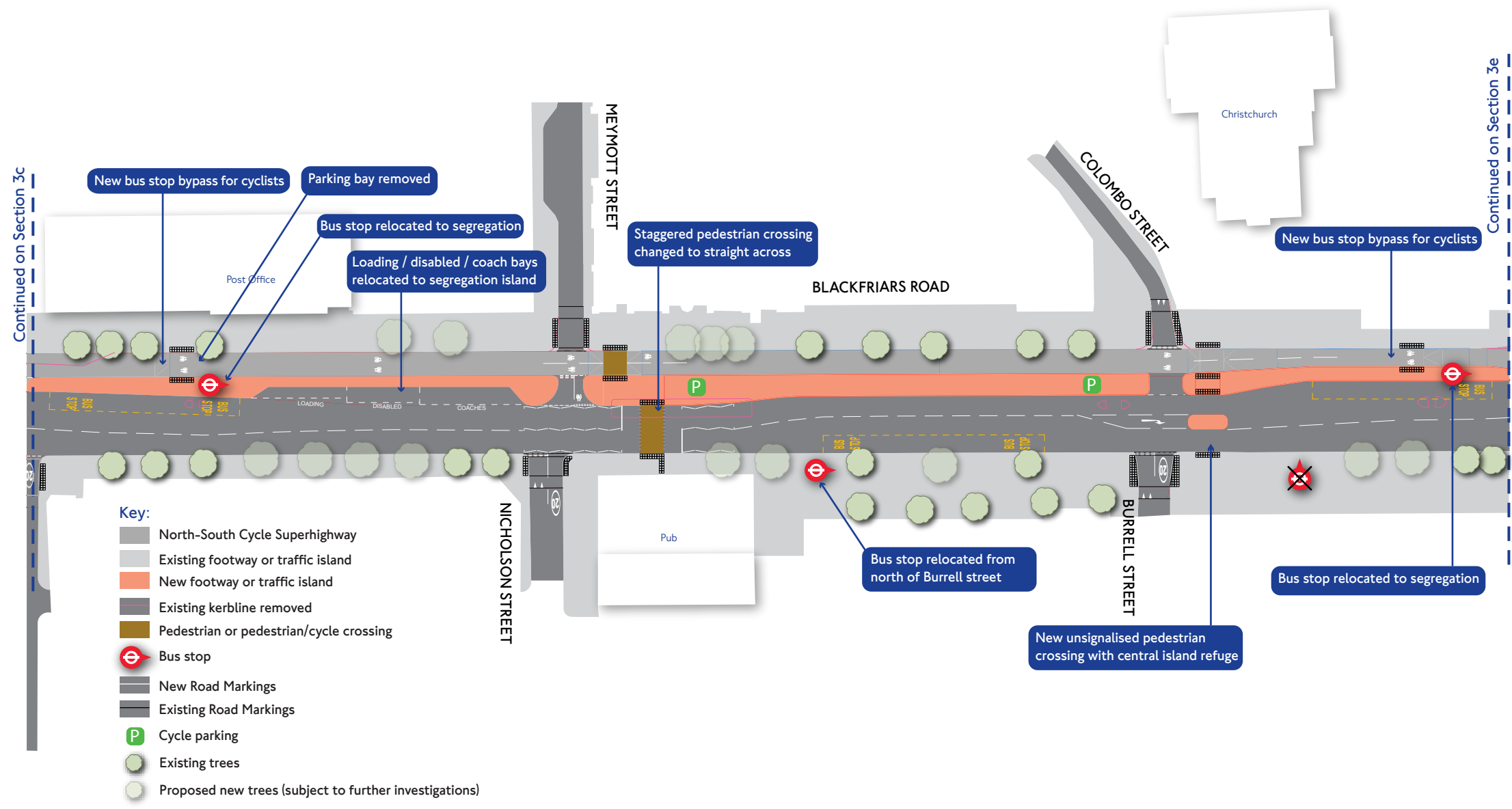
Key:

- North-South Cycle Superhighway
- Existing footway or traffic island
- New footway or traffic island
- Existing kerbline removed
- Pedestrian or pedestrian/cycle crossing
- Barclays Cycle Hire docking station
- Bus stop
- New Road Markings
- Existing Road Markings
- Cycle parking
- Existing trees
- Proposed new trees (subject to further investigations)





North-South Cycle Superhighway Section 3d – Blackfriars Road



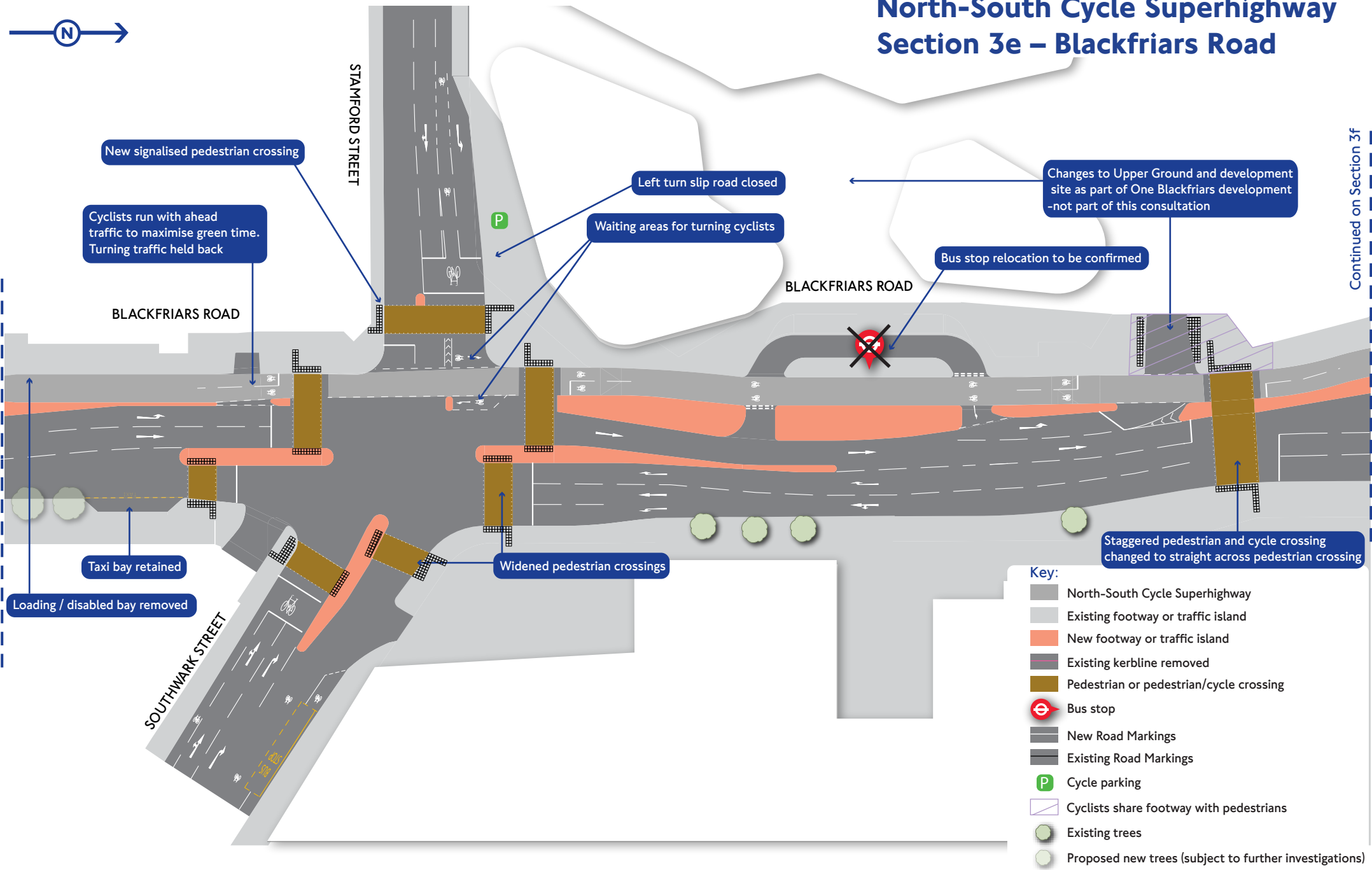
- Key:**
- North-South Cycle Superhighway
 - Existing footway or traffic island
 - New footway or traffic island
 - Existing kerblines removed
 - Pedestrian or pedestrian/cycle crossing
 - Bus stop
 - New Road Markings
 - Existing Road Markings
 - Cycle parking
 - Existing trees
 - Proposed new trees (subject to further investigations)

North-South Cycle Superhighway Section 3e – Blackfriars Road



Continued on Section 3f

Continued on Section 3d



New signalised pedestrian crossing

Cyclists run with ahead traffic to maximise green time. Turning traffic held back

Left turn slip road closed

Waiting areas for turning cyclists

Changes to Upper Ground and development site as part of One Blackfriars development -not part of this consultation

Bus stop relocation to be confirmed

Taxi bay retained

Loading / disabled bay removed

Widened pedestrian crossings

Staggered pedestrian and cycle crossing changed to straight across pedestrian crossing

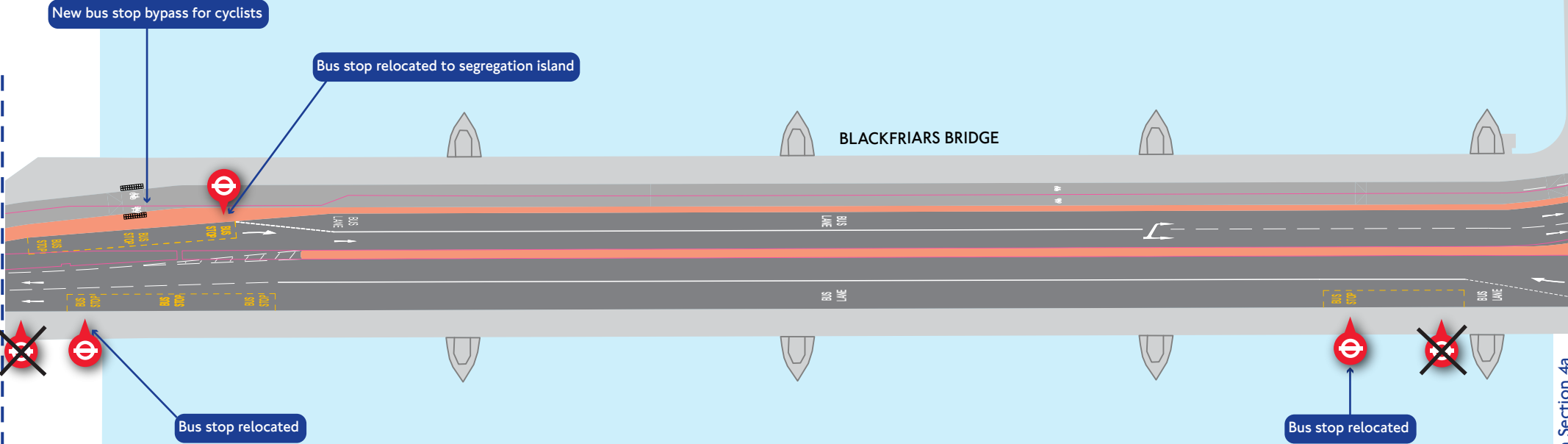
- Key:**
- North-South Cycle Superhighway
 - Existing footway or traffic island
 - New footway or traffic island
 - Existing kerblines removed
 - Pedestrian or pedestrian/cycle crossing
 - Bus stop
 - New Road Markings
 - Existing Road Markings
 - Cycle parking
 - Cyclists share footway with pedestrians
 - Existing trees
 - Proposed new trees (subject to further investigations)

North-South Cycle Superhighway Section 3f – Blackfriars Bridge



Continued on Section 3e

Continued on Section 4a

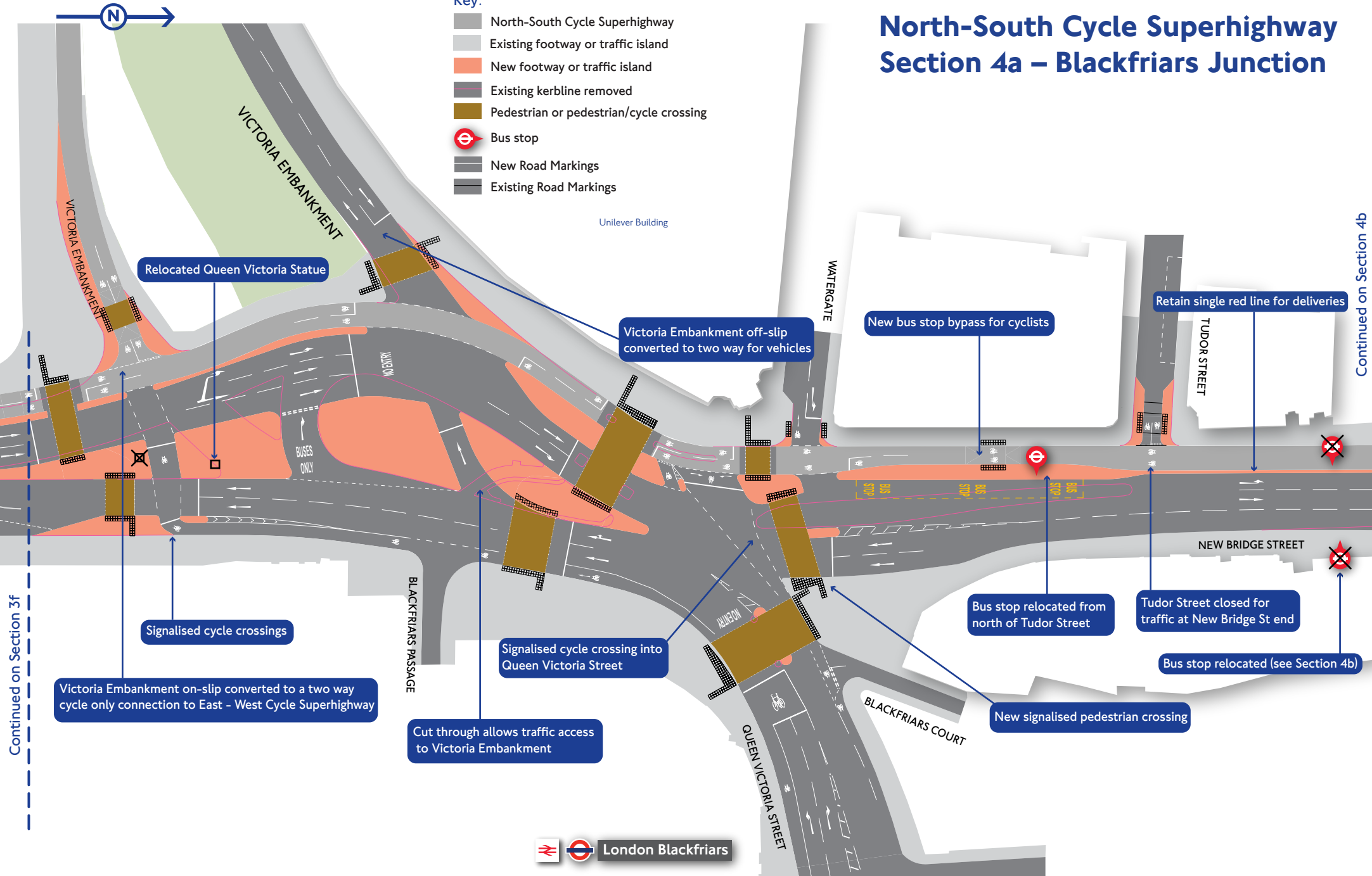


Key:

- North-South Cycle Superhighway
- Existing footway or traffic island
- New footway or traffic island
- Existing kerbline removed
- Pedestrian or pedestrian/cycle crossing
- ⊖ Bus stop
- New Road Markings
- Existing Road Markings

North-South Cycle Superhighway Section 4a – Blackfriars Junction

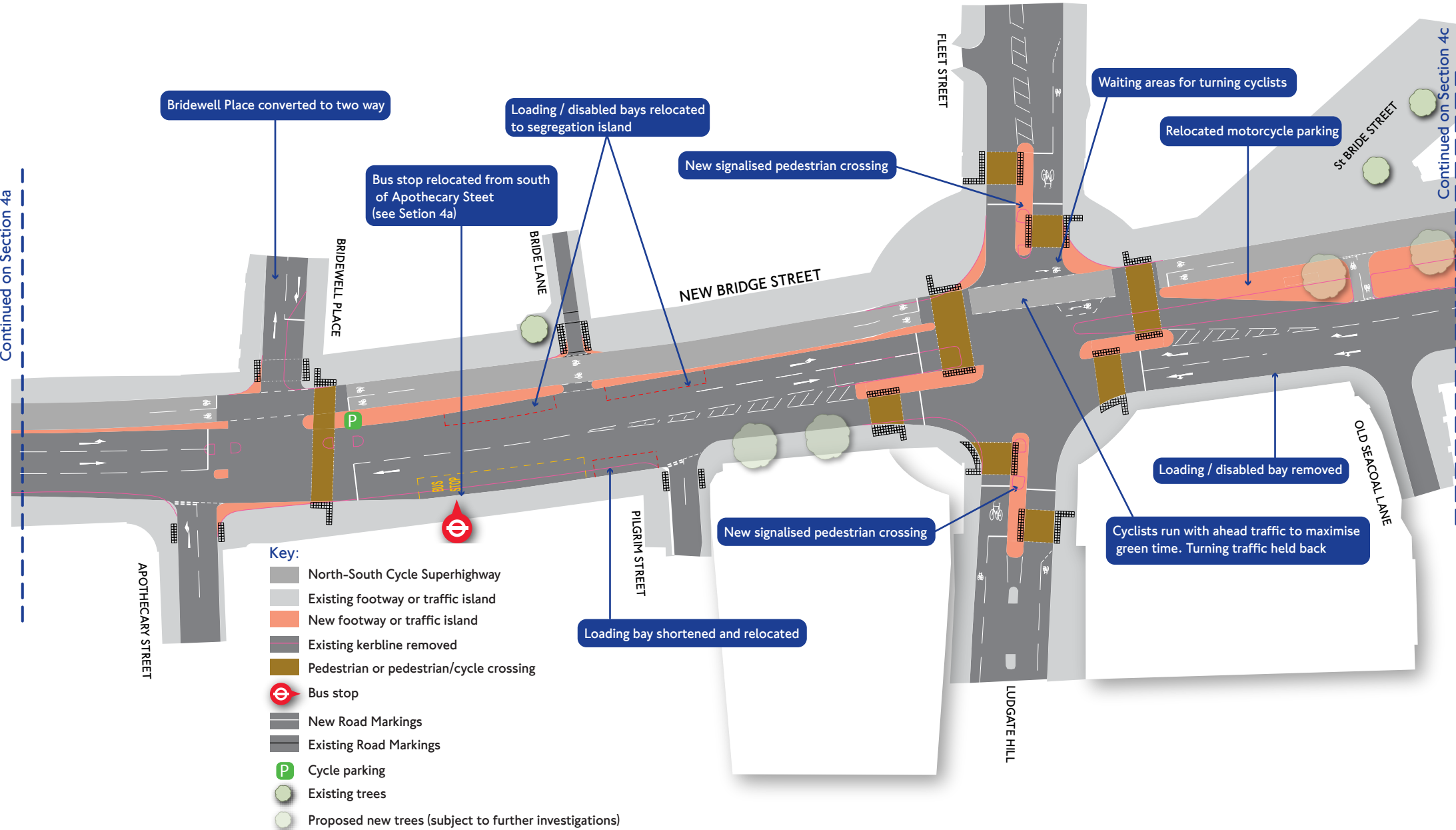
- Key:**
- North-South Cycle Superhighway
 - Existing footway or traffic island
 - New footway or traffic island
 - Existing kerbline removed
 - Pedestrian or pedestrian/cycle crossing
 - Bus stop
 - New Road Markings
 - Existing Road Markings



London Blackfriars

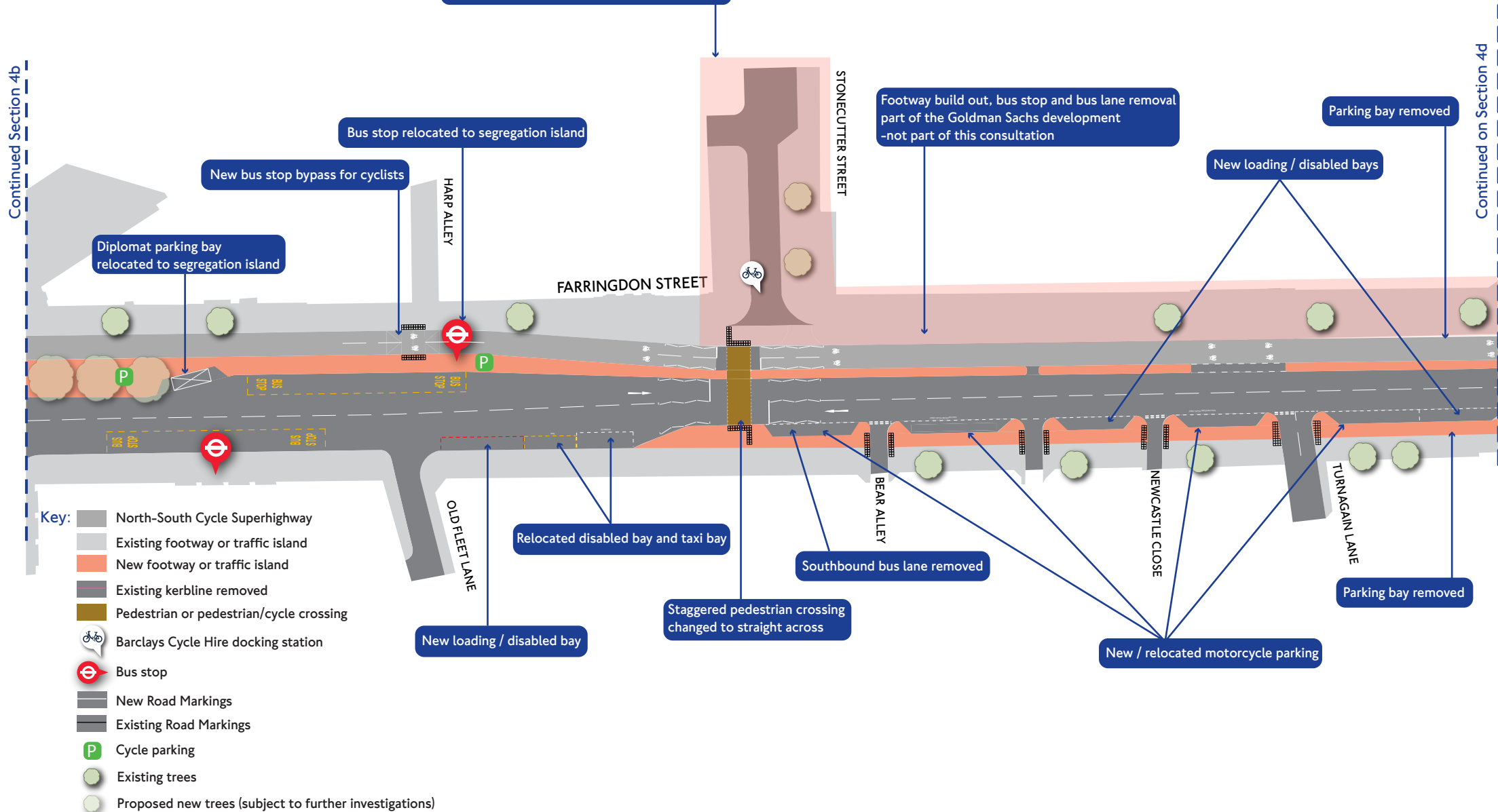


North-South Cycle Superhighway Section 4b – New Bridge Street





North-South Cycle Superhighway Section 4c – Farringdon Street

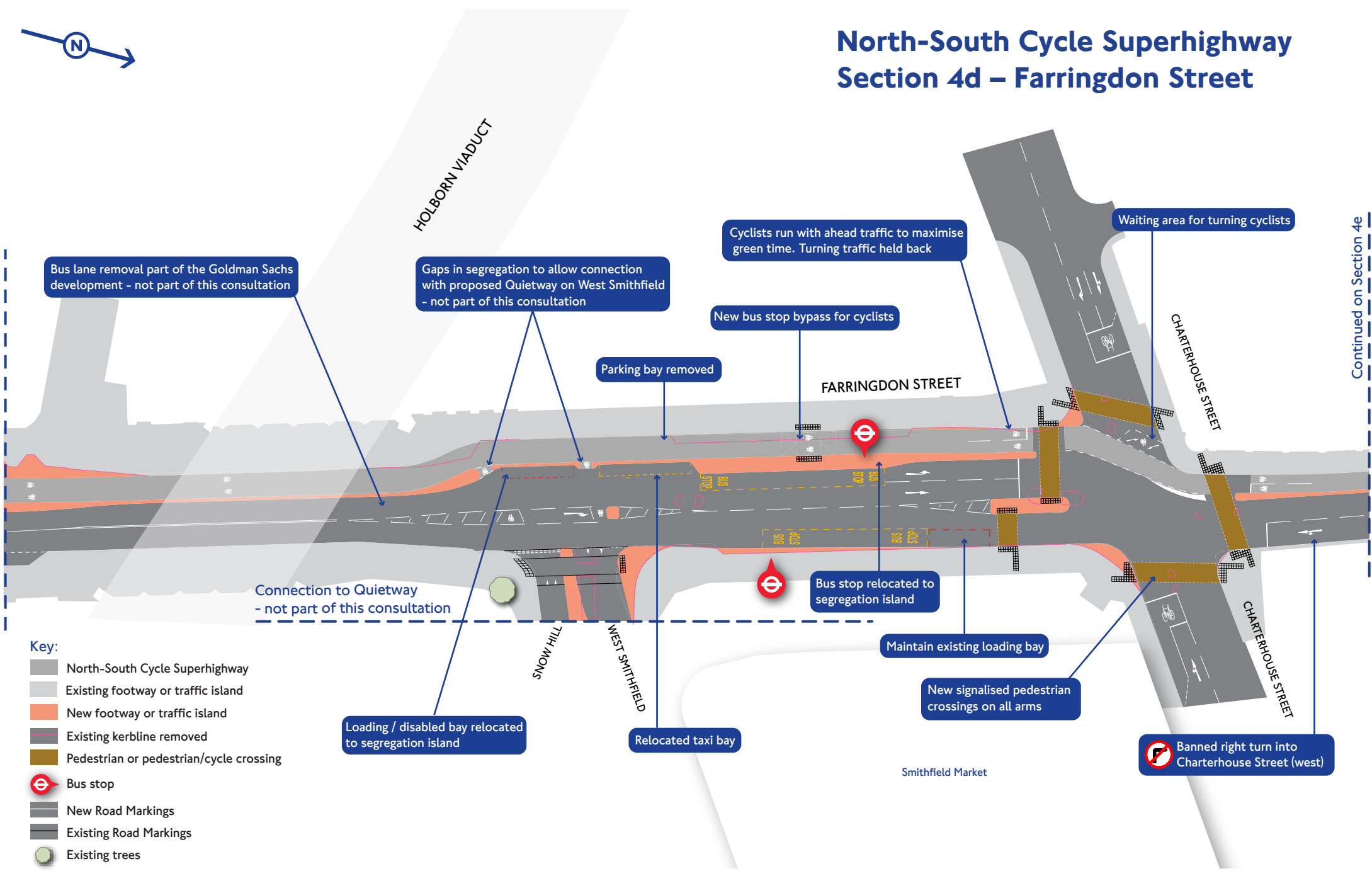


North-South Cycle Superhighway Section 4d – Farringdon Street



Continued on Section 4c

Continued on Section 4e

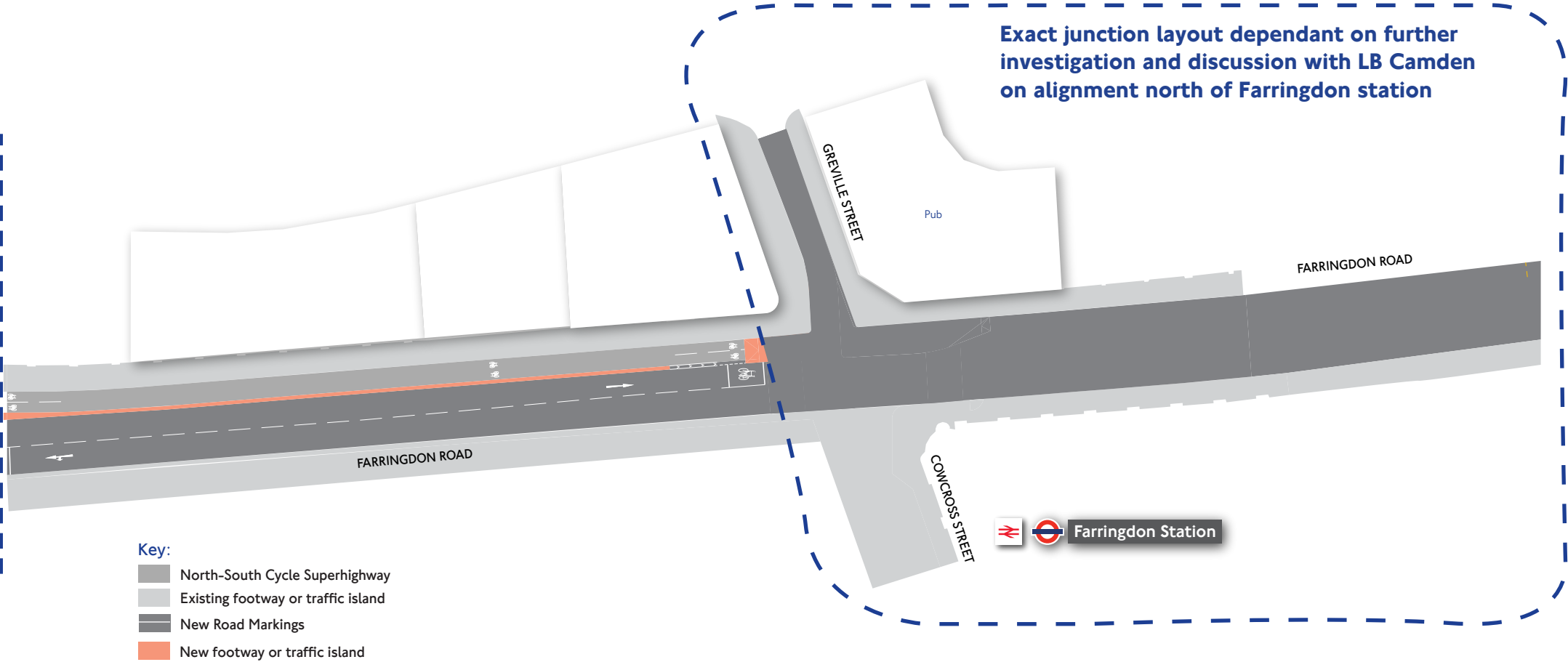


- Key:**
- North-South Cycle Superhighway
 - Existing footway or traffic island
 - New footway or traffic island
 - Existing kerbline removed
 - Pedestrian or pedestrian/cycle crossing
 - Bus stop
 - New Road Markings
 - Existing Road Markings
 - Existing trees



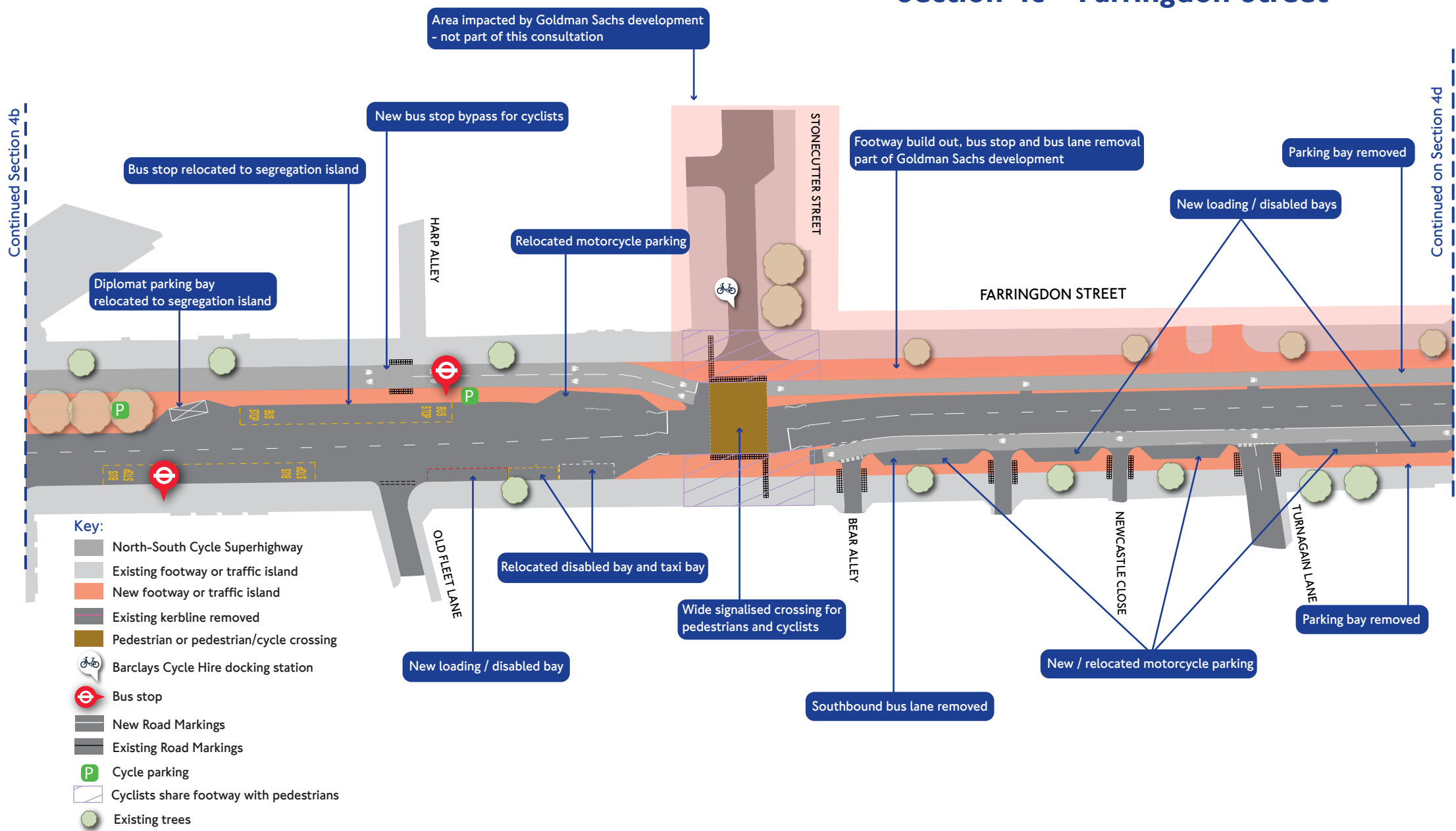
North-South Cycle Superhighway Section 4e – Farringdon Road

Continued on Section 4d





North-South Cycle Superhighway Section 4c – Farringdon Street



North-South Cycle Superhighway Section 4d – Farringdon Street



Continued on Section 4c

Continued on Section 4e

Bus lane removal part of the Goldman Sachs development - not part of this consultation

Gaps in segregation to allow connection with Quietway on West Smithfield - not part of this consultation

Cyclists run with ahead traffic to maximise green time. Turning traffic held back

Waiting area for right turning cyclists

Parking bay removed

New bus stop bypass for cyclists

Bus stop relocated to segregation island

FARRINGDON STREET

CHARTERHOUSE STREET

Connection to proposed Quietway - not part of this consultation

Loading / disabled bay relocated to segregation island

Relocated taxi bay

Loading bay removed

New bus stop bypass for cyclists

Waiting area for right turning cyclists

Key:

- North-South Cycle Superhighway
- Existing footway or traffic island
- New footway or traffic island
- Existing kerpline removed
- Pedestrian or pedestrian/cycle crossing
- Bus stop
- New Road Markings
- Existing Road Markings
- Existing trees

SNOW HILL

WEST SMITHFIELD

Smithfield Market

New signalised pedestrian crossings on all arms

CHARTERHOUSE STREET

North-South Cycle Superhighway Section 4e – Farringdon Road



Continued on Section 4d

Semi segregated cycle lanes

Exact junction layout dependant on further investigation and discussion with LB Camden on alignment north of Farringdon station

- Key:
- North-South Cycle Superhighway
 - Existing footway or traffic island
 - New Road Markings

