

Northern Line Extension

Nine Elms

Community Liaison Group

18 July 2019

Delivering the Northern line extension with

ferrovial
agroman



MAYOR OF LONDON



TRANSPORT
FOR LONDON



Apr '19 – Jun '19

Ticket Hall



FERROVIAL AGROMAN
LAING O'ROURKE JV



April '19 – June '19

Ticket Hall



FERROVIAL AGROMAN
LAING O'ROURKE JV

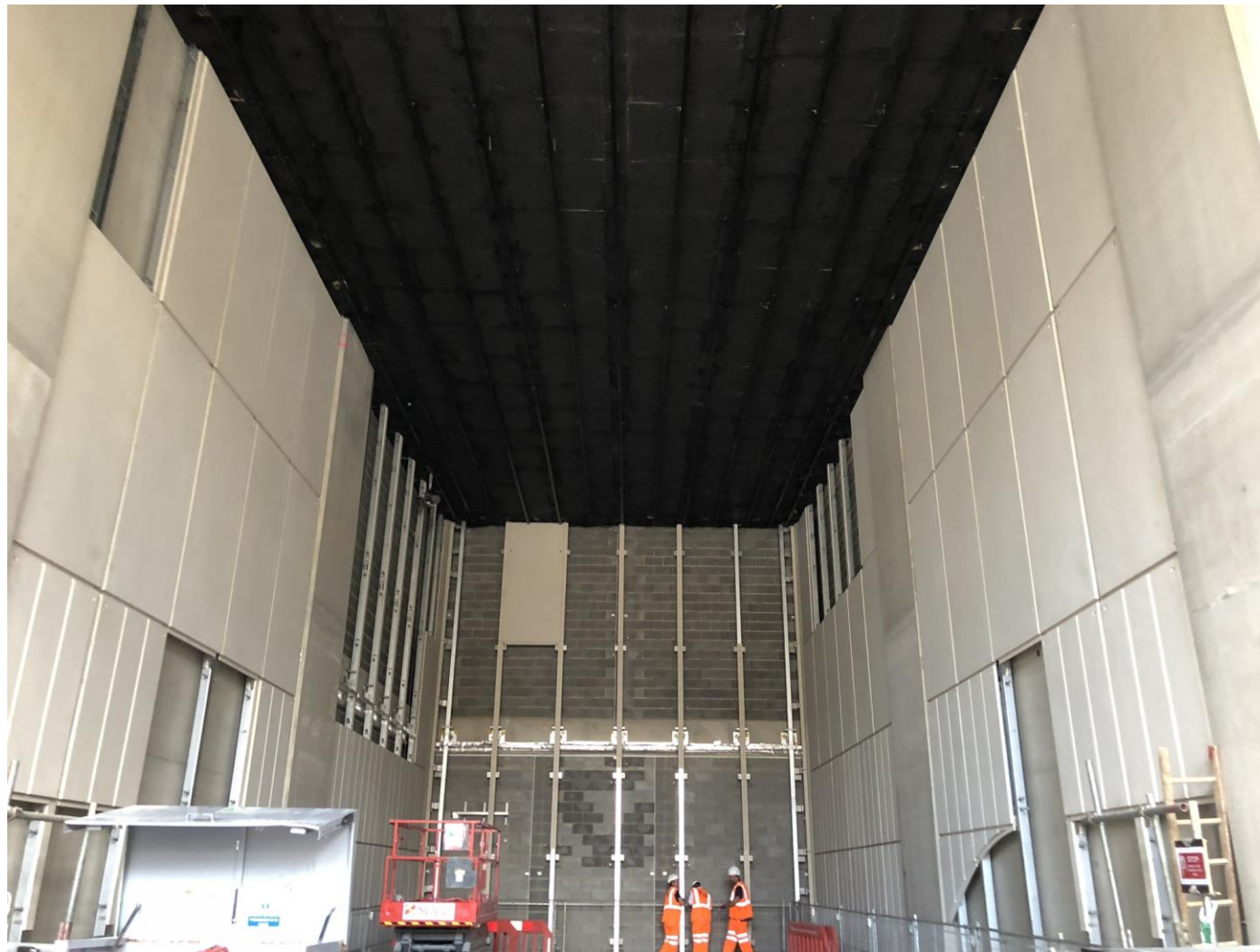


April '19 – June '19

Ticket Hall – GFRC Cladding



FERROVIAL AGROMAN
LAING O'ROURKE JV



April '19 – June '19

Platform Area



FERROVIAL AGROMAN
LAING O'ROURKE JV



April '19 – June '19

Platform Area



FERROVIAL AGROMAN
LAING O'ROURKE JV



April '19 – June '19

Reinforced Concrete Superstructures complete



FERROVIAL AGROMAN
LAING O'ROURKE JV



April '19 – June '19

Barratt's link connection ongoing



FERROVIAL AGROMAN
LAING O'ROURKE JV



April '19 – June '19

External Drainage Works ongoing



FERROVIAL AGROMAN
LAING O'ROURKE JV



April '19 – June '19

Front Of House Glass Ongoing



FERROVIAL AGROMAN
LAING O'ROURKE JV



April '19 – June '19

MEP CMS and Ductwork ongoing



FERROVIAL AGROMAN
LAING O'ROURKE JV



April '19 – June '19

MEP CMS and Ductwork ongoing



FERROVIAL AGROMAN
LAING O'ROURKE JV



April '19 – June '19

MEP CMS and Ductwork ongoing



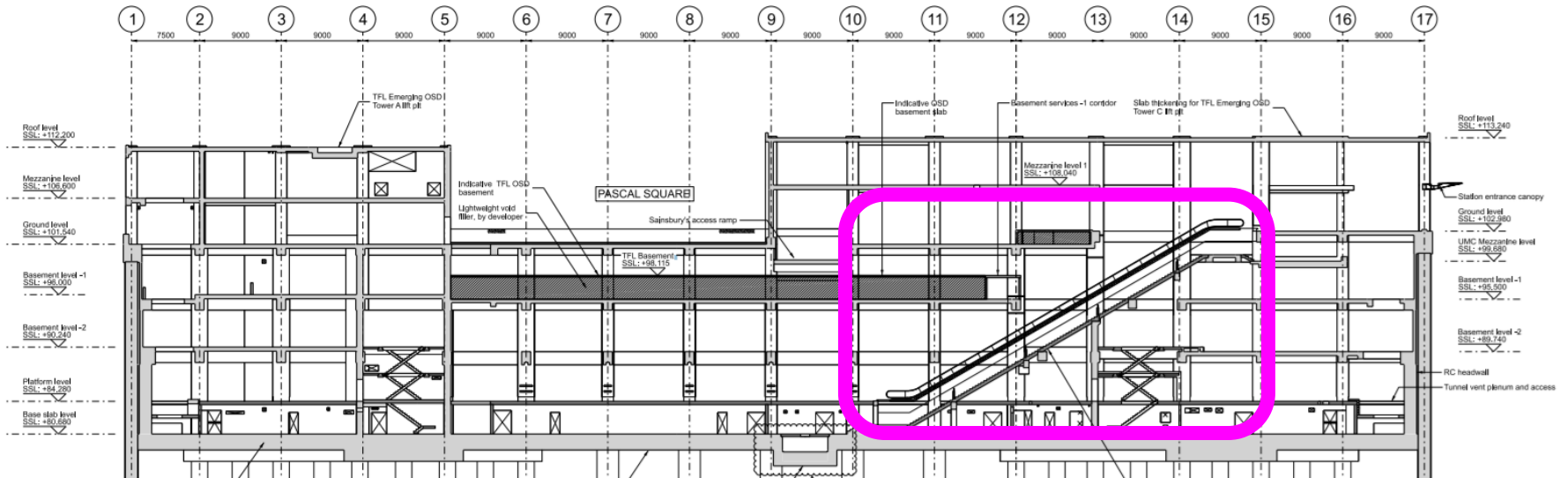
FERROVIAL AGROMAN
LAING O'ROURKE JV



July '19 – September '19



FERROVIAL AGROMAN
LAING O'ROURKE JV



Start installation of escalators



July '19 – September '19



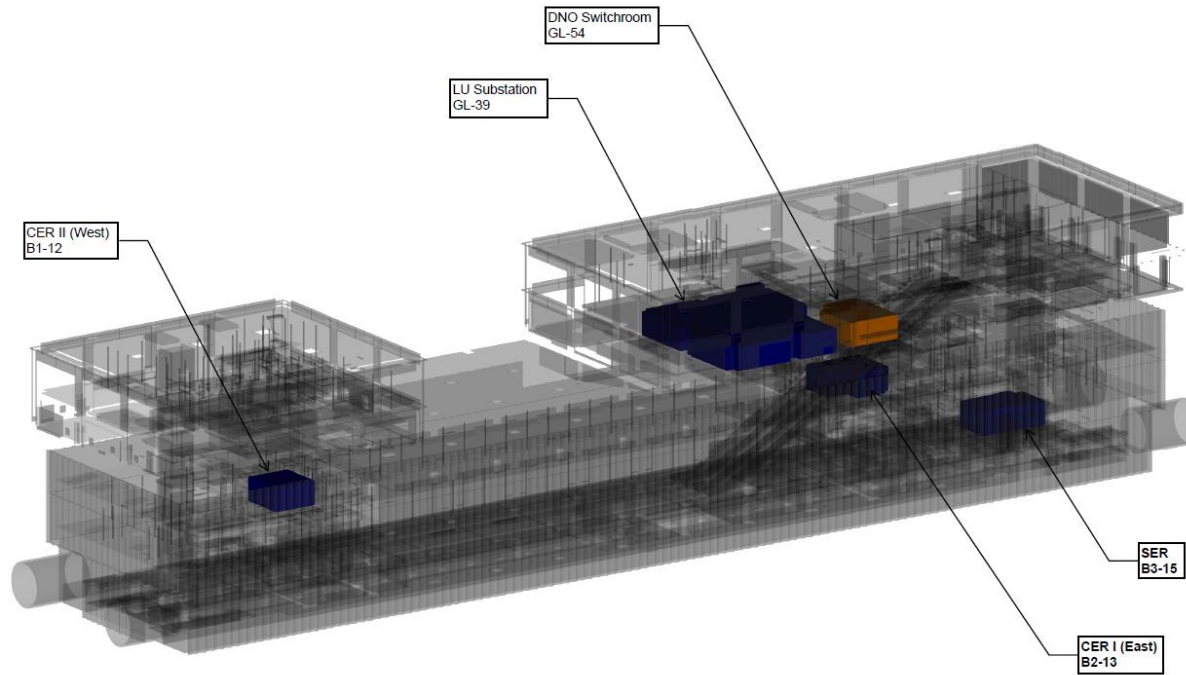
FERROVIAL AGROMAN
LAING O'ROURKE JV



Blockwork Completion



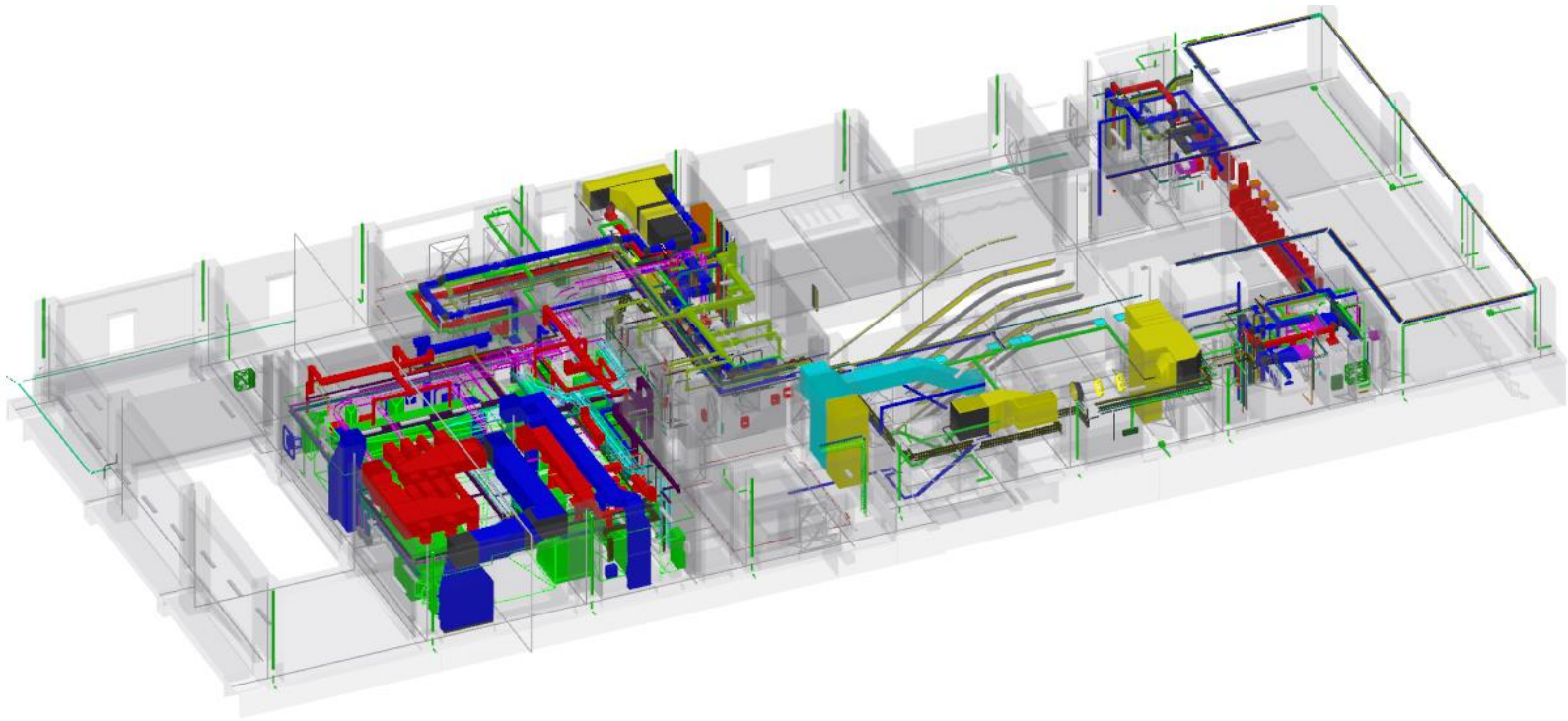
July '19 – September '19



DNO Rooms MEP Works



July '19 – September '19



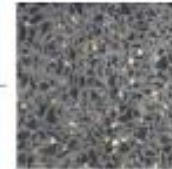
Traction Substation MEP Works

External Cladding

Station Entrance Material Strategy



FERROVIAL AGROMAN
LAING O'ROURKE JV



DARK RECONSTITUTED
MONOLITHIC PANEL



STRUCTURAL SILICON
GLAZING



METAL CANOPY



EXPOSED CONCRETE
(NOTE ALLOWANCE FOR
HIGH QUALITY VISUALLY
EXPOSED IN-SITU AND
PRECAST FINISHES)



SATIN STAINLESS STEEL
BOSTWICK GATE HOUSING

Figure 4.3 – Station entrance material strategy

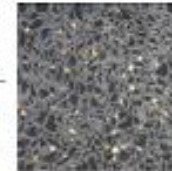


External Cladding

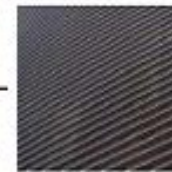
External Envelope Material Strategy



FERROVIAL AGROMAN
LAING O'ROURKE JV



DARK RECONSTITUTED
MONOLITHIC PANEL



BLACK SATIN ANODISED
ALUMINIUM LOUVERS



DARK METAL PANEL
WITH VERTICAL PROFILE

Figure 4.4 – External envelope materials strategy

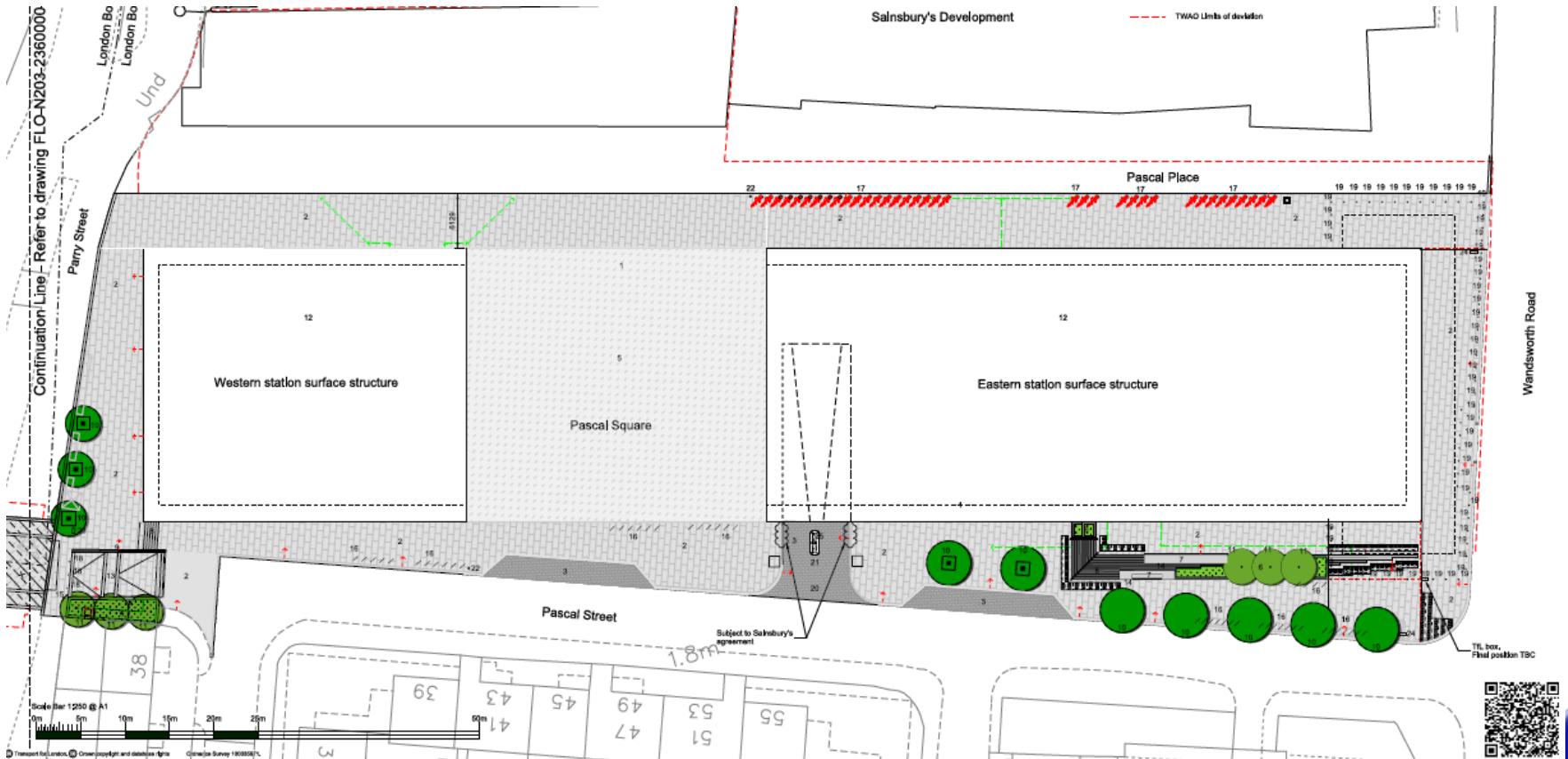


Pedestrian Flow

Station Area



FERROVIAL AGROMAN
LAING O'ROURKE JV

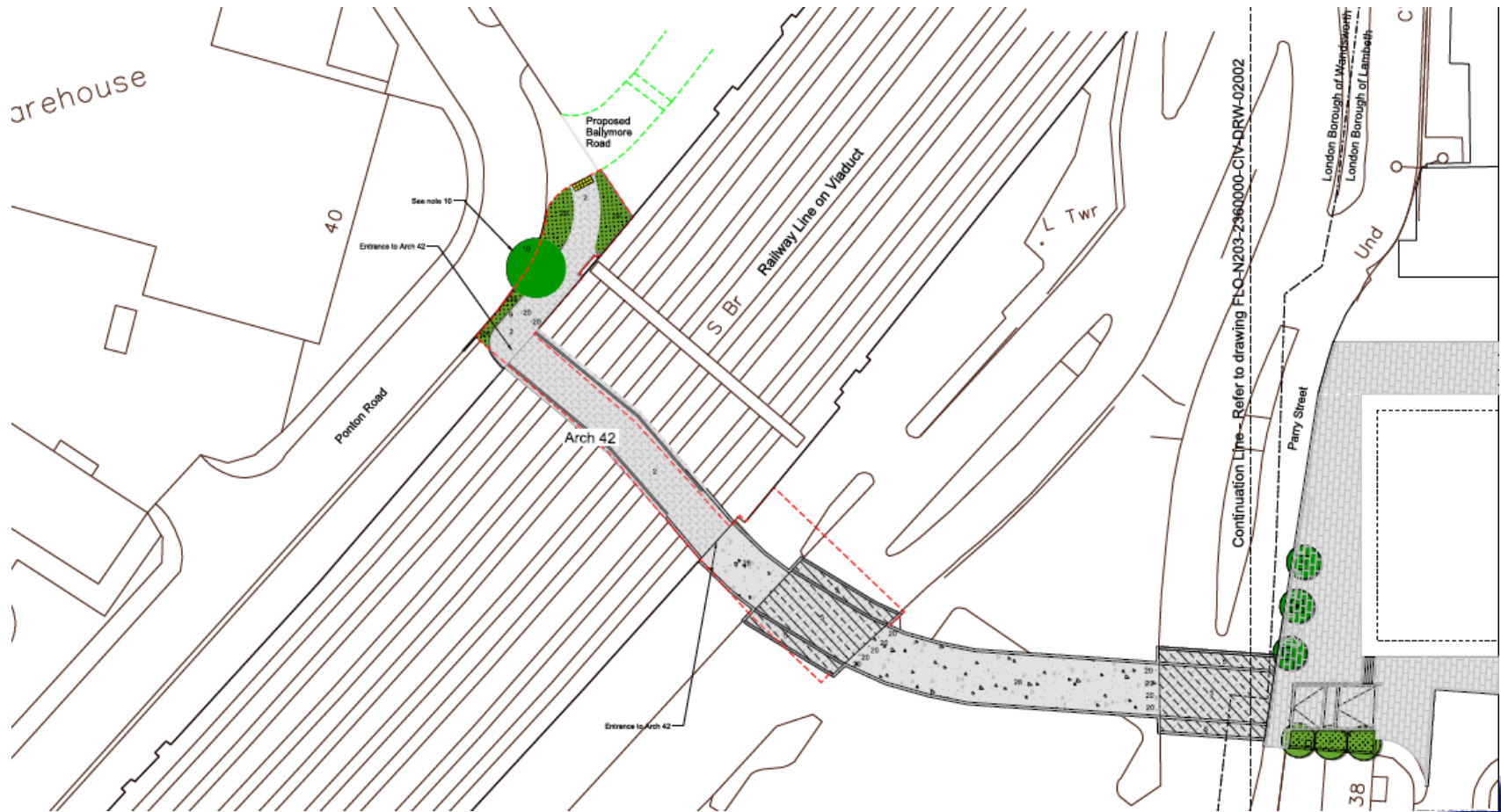


Pedestrian Flow

Arch 42 Area

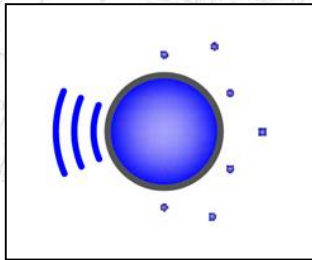
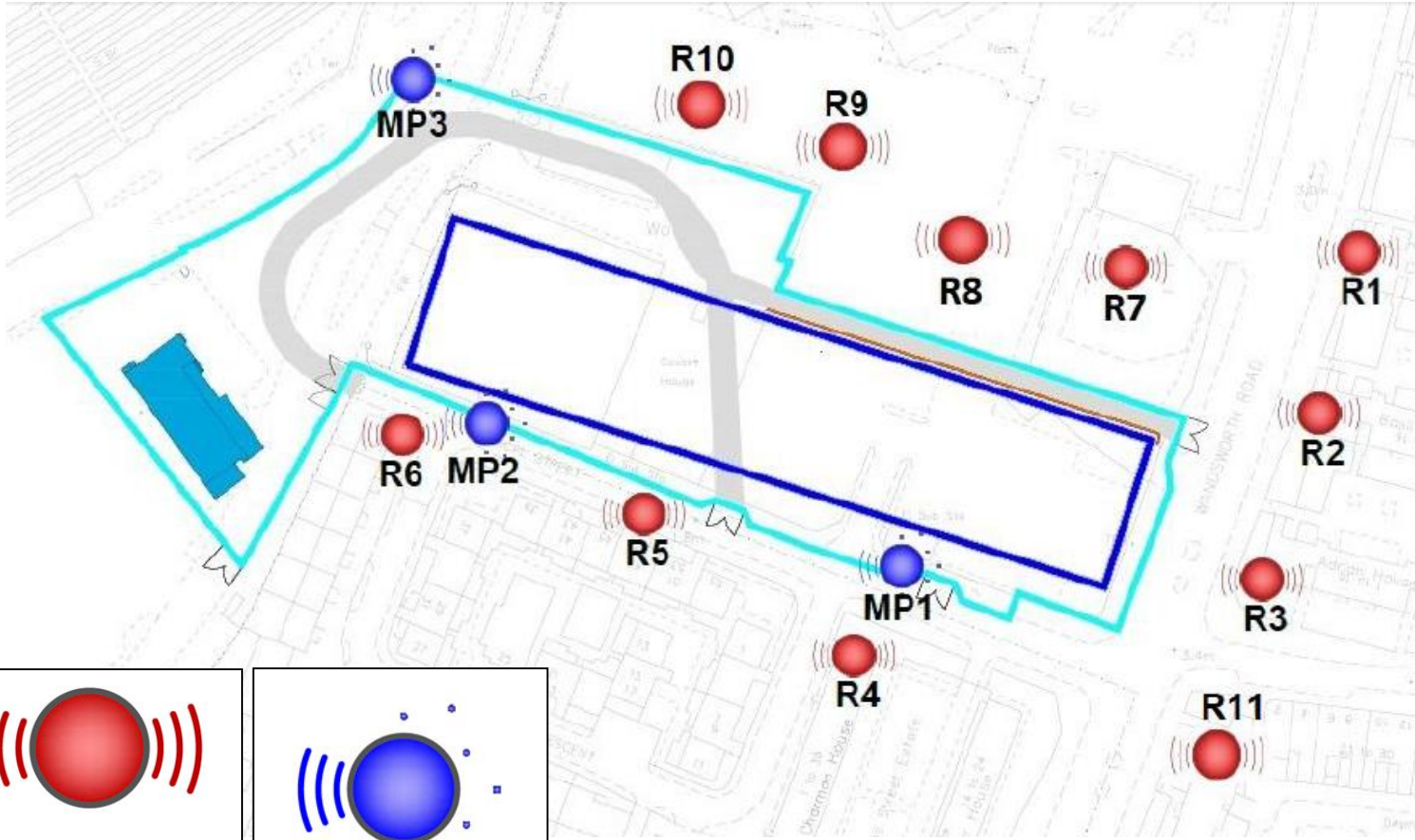


FERROVIAL AGROMAN
LAING O'ROURKE JV



Environmental Monitoring Locations

Noise monitoring stations and sensitive receptors



Construction Noise Monitoring

Noise Time History: Receptor R1 - R4 (Wandsworth Rd, Charman House)

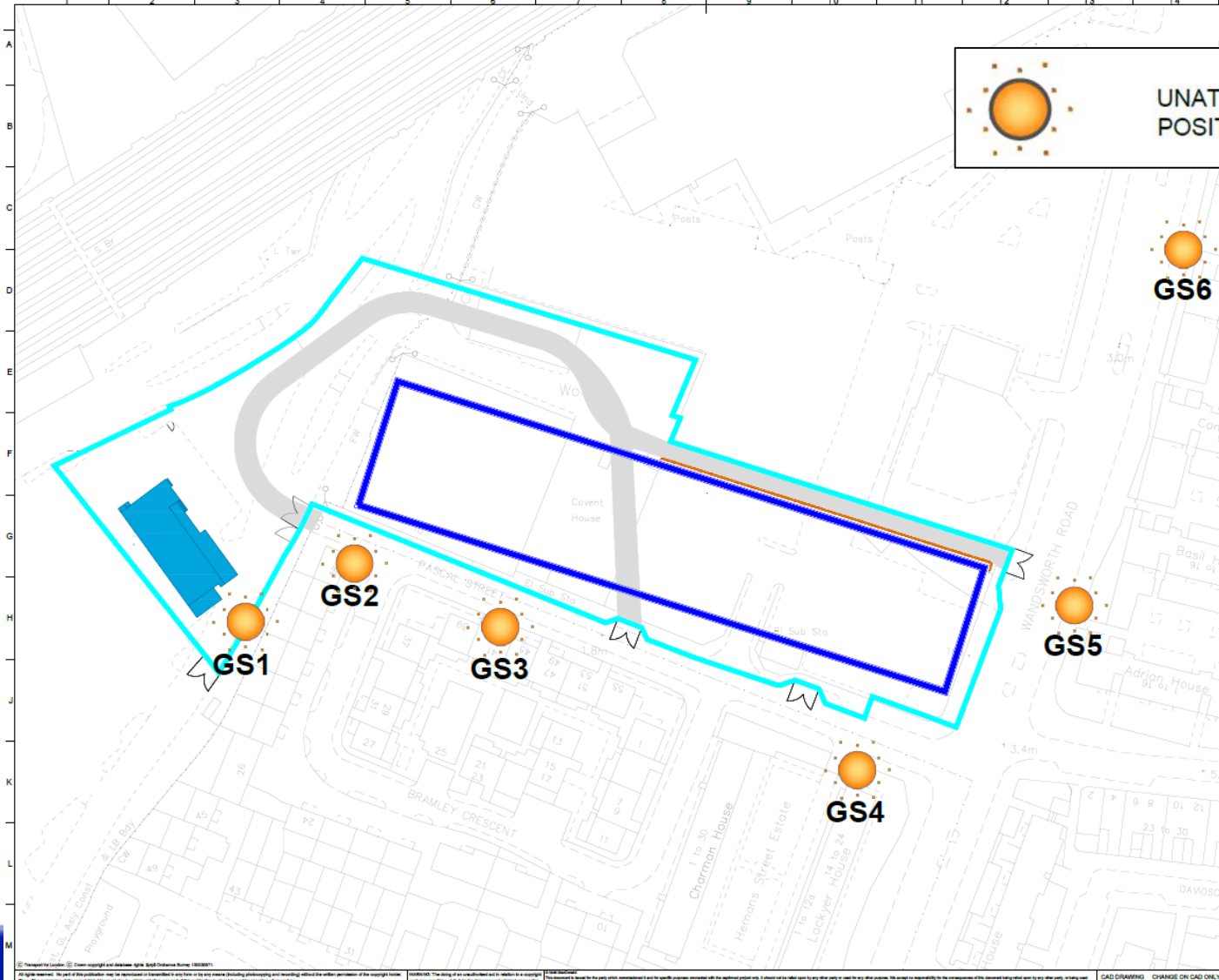


Environmental Monitoring Locations

Dust monitoring stations and sensitive receptors



FERROVIAL AGROMAN
LAING O'ROURKE JV



 UNATTENDED DUST MONITORING POSITION (GLASS SIDE)

 GS6

 GS5

 GS4

 GS3

 GS2

 GS1



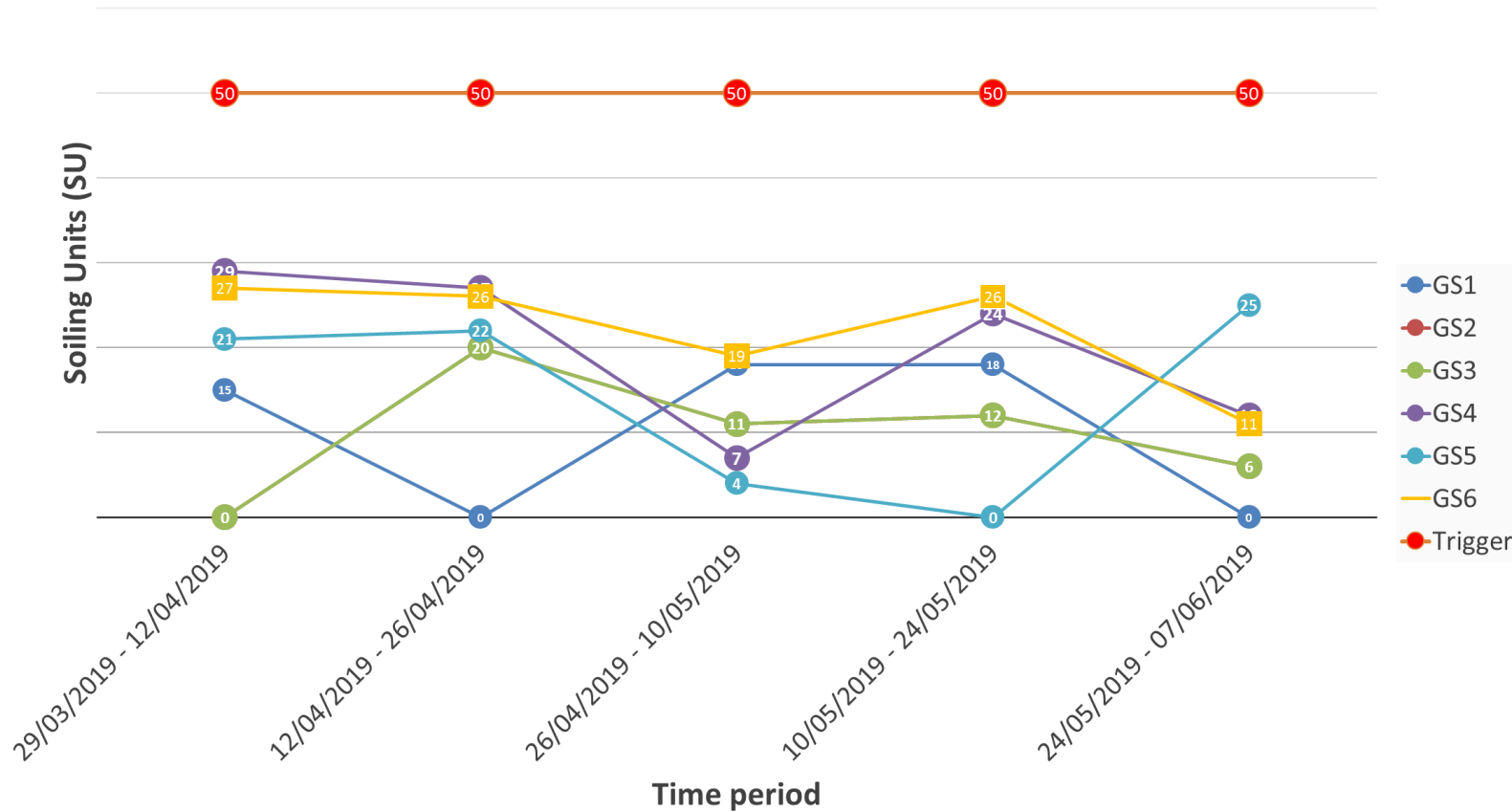
Monitoring Apr – Jun 19

Dust slides results – Passive AQ monitoring



FERROVIAL AGROMAN
LAING O'ROURKE JV

NLE - Nine Elms - Fortnightly Passive AQ monitoring



Community Engagement

From this...



....to this....Recycling delivery pallets.
Donation to the local community gardens.



Community Engagement and NLE Skills and Employment



FERROVIAL AGROMAN
LAING O'ROURKE JV



Site tours at Battersea:
60 students from St Thomas the Apostle (Southwark)
70 students from Sacred Heart (Southwark)

School engagement events:

Air pollution workshop - Sacred Heart
(Southwark - pic)

Engineering talk – St George's Primary
(Wandsworth)

Women in STEM – Harris 6th form
(Westminster)

Careers networking – Graveney School
(Wandsworth)



Ways to contact us

- It is important that calls are logged through the NLE 24/7 helpdesk on 0343 222 2424 (Option 1)
- Email nle@tfl.gov.uk
- Drop In sessions
- Please visit:

<https://tfl.gov.uk/northern-line-extension>