

Northern line extension

Core Community Liaison Group

Meeting 30.03.2015

Summary Update

- Code of Construction Part B (COCP B) submitted to local authorities for approval earlier in the year
- Enabling works have started on all four sites
- Main construction works to start during 2015
- Community Drop in Sessions held during first week of December 2014. Feedback received and reviewed
- Engagement with third parties is ongoing

NLE timetable

Year	Key milestones
2014	Transport and Works Act Order decision, Design & Build contract signed
2015	Agreement on Code of Construction Practice Part B, Start of main works at all sites
2016	Start of Tunnel Boring Machines
2017	Completion of tunnelling
2018	Fit out of new stations, Kennington shafts complete inc reinstatement, work at Kennington station complete
2019	Testing, commissioning, trial operations
2020	NLE complete and in service



Three months look ahead

Period	Key milestones all sites
Feb – Jun 15 Kennington G. Kennington P. Nine Elms Battersea	<ul style="list-style-type: none">• Site Clearance and site set up• Temporary Fencing• Completion of installation of new power supply• Utility Service Diversions by UKPN, BT, Virgin, Gas and Water• Archaeological Surveys• Tree Lopping/Removal / Protection works• Bus lane and pedestrian crossing suspensions at KG and NE• UXO Probing Kennington (Unexploded Ordnance) Radar detection from ground level• Installation of permanent hoarding• Demolition works at Kennington Park and Nine Elms



Code of Construction Practice

Part B

- CoCP B have been updated following comments from December drop in sessions, online survey and meeting with residents
- Individual response to feedback received is to be sent shortly
- CoCP B submitted to Local Authorities for discharge of planning condition in January 2015 and awaiting approval
- Saturdays quiet working hour, 0800 to 0900 discussed

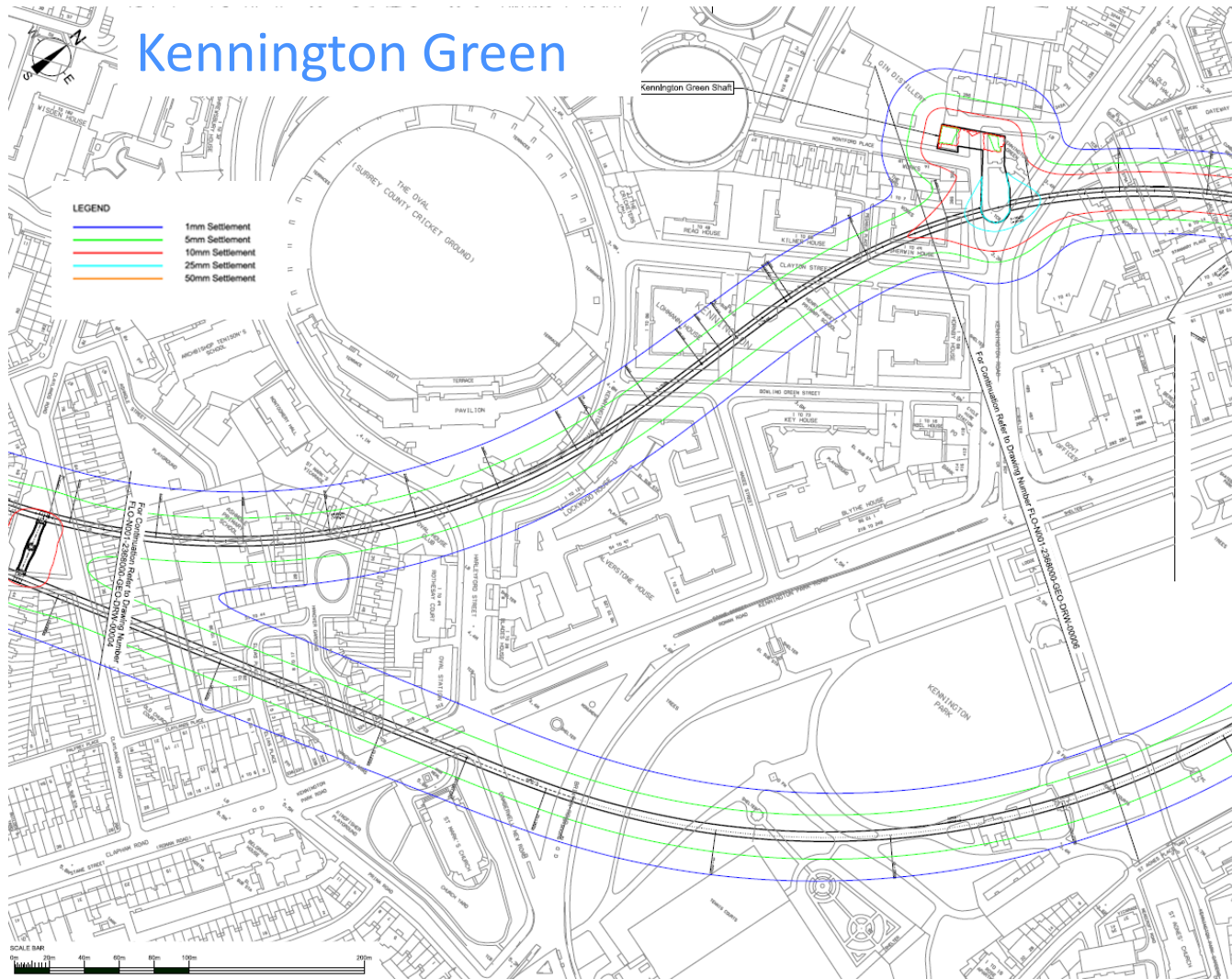


Update – Ground Investigations

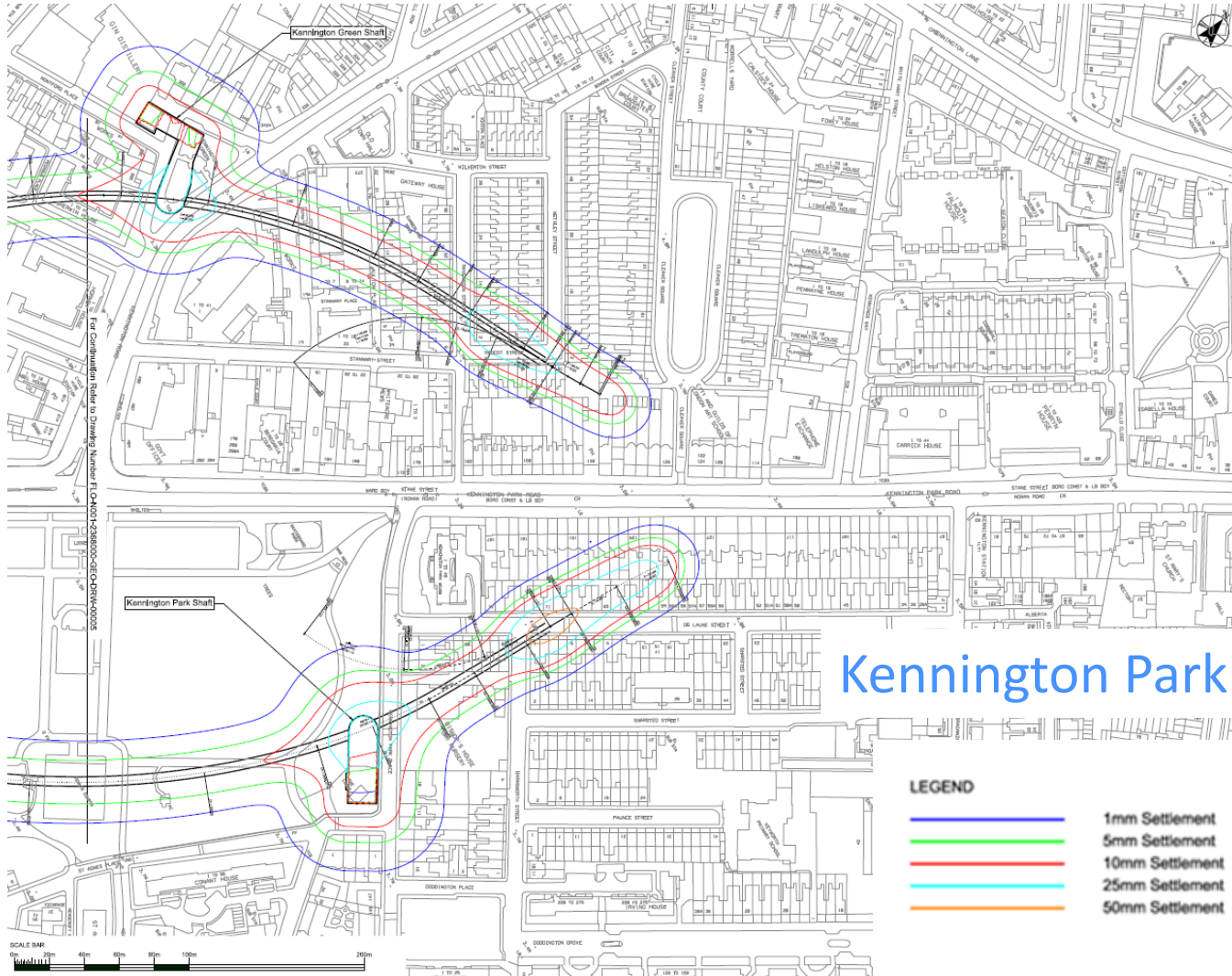
- The NLE team is approaching completion of what is called concept design
- Early findings are consistent with expectations
- Lambeth and Southwark agreed to the release of information for boreholes on their land (in Wandsworth work was on private, not council owned land). Requirements for additional boreholes is being reviewed
- Ground conditions for tunnelling predominantly London Clay. An ideal tunnelling medium
- Groundwater/ step plate junction within a full face of impermeable London Clay
- Arrangements for archaeological works are being progressed
- Design proposals replacing the need for compensation grouting



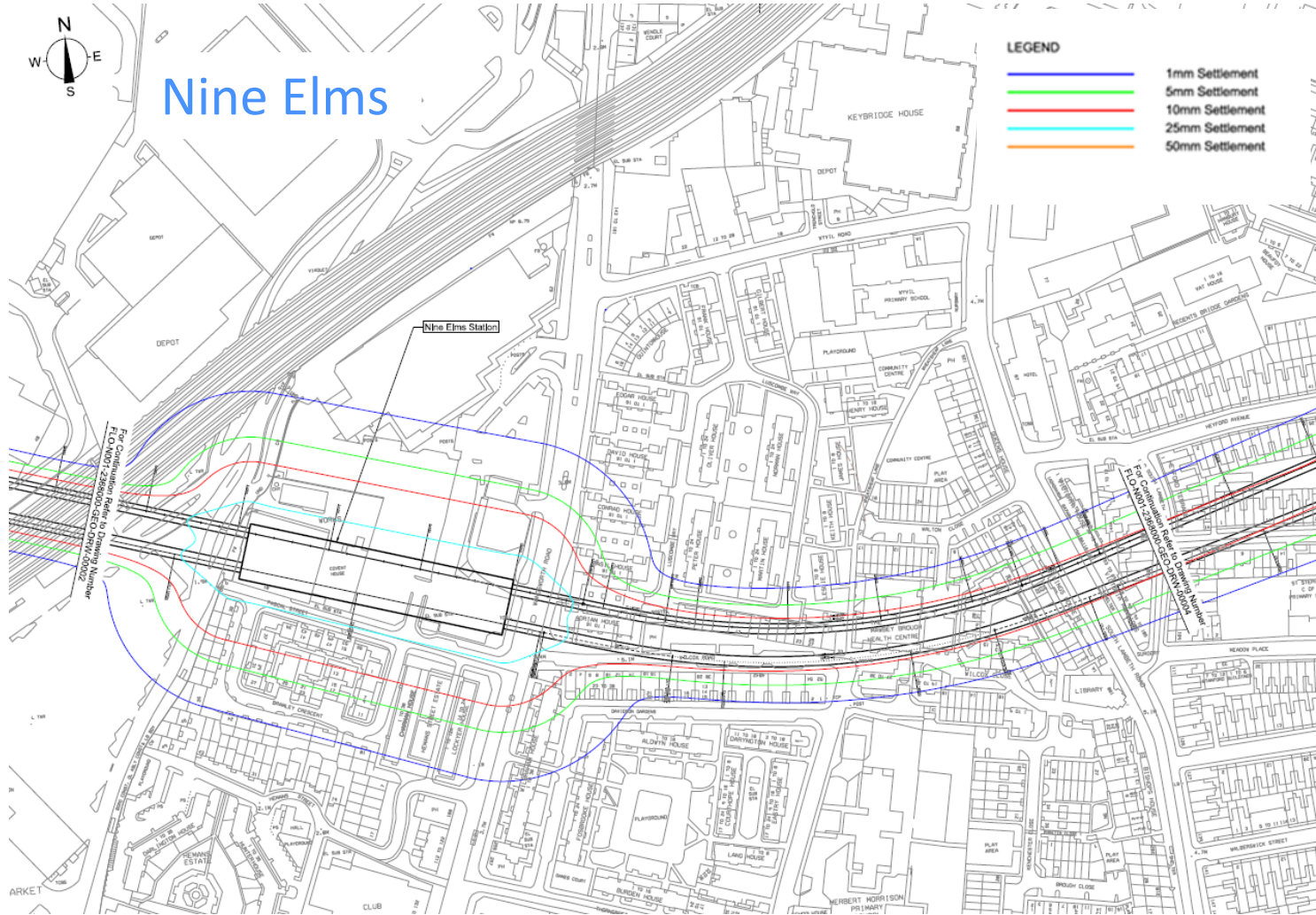
Preliminary Settlement Contours



Preliminary Settlement Contours



Preliminary Settlement Contours



Defect Surveys

- Defect Surveys to be undertaken by a qualified chartered building surveyor or engineer on properties predicted to experience 1mm or more settlement
- We will contact affected properties via letter
- A minimum of 4 weeks notice will be given to building owners prior to the defect survey being carried out
- Where necessary a second survey will be undertaken to establish the difference between the two assessments
- There will be a written and photographic record and a copy will be available to the property owner



Settlement Deeds

- TfL has started contacting properties via letter about settlement deeds
- Settlement deeds to be offered to property owners where the property falls within the NLE Limits of Deviation
- A further letter, with a Frequently Asked Questions has been sent out
- Differences between Settlement deeds and Defect Surveys discussed at March 2015 CLG meetings

Measuring and Monitoring

- Outline design for monitoring completed January 2015
- Consultants working on the detailed monitoring scope
- Monitoring tender package to be awarded end of March
- Monitoring installation to begin May-June 2015
- Minimum of 4 weeks notice will be given to building owners prior to the installation of any monitoring equipment to buildings
- Envisaged that the monitoring equipment will comprise BRE (building research establishment) studs (structure levelling studs) and 3D geodetic prisms, see next slides



Monitoring techniques

Buildings – Real time data:

3D geodetic prisms



Automatic Total Station (ATS)



Prisms

ATS: an electrical/optical instrument used in modern building construction to measure slope distances from the instrument to a particular point.



Monitoring techniques

Buildings – Manual data:

BRE studs (structure levelling studs)



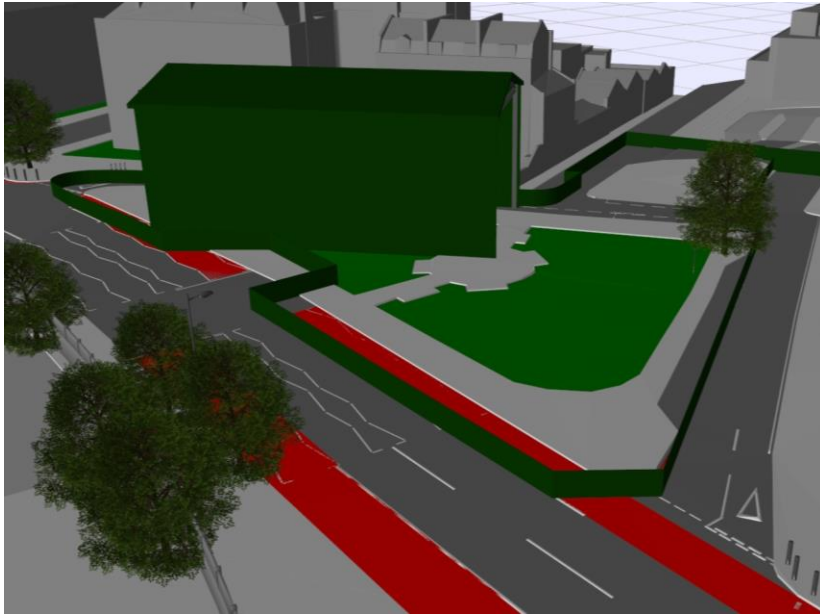
Construction Noise Assessment

- Enabling works have been assessed using the NLE construction noise and vibration mitigation scheme and no properties were found to be above the threshold for secondary glazing or temporary re-house
- Noise modelling is being updated from the Environmental Statement, to include more detailed construction methodologies and mitigation measures for the duration of the scheme
- Predictions will be reviewed on a 6 monthly basis to capture any design changes
- Best Practicable Means will be applied to mitigate noise at source

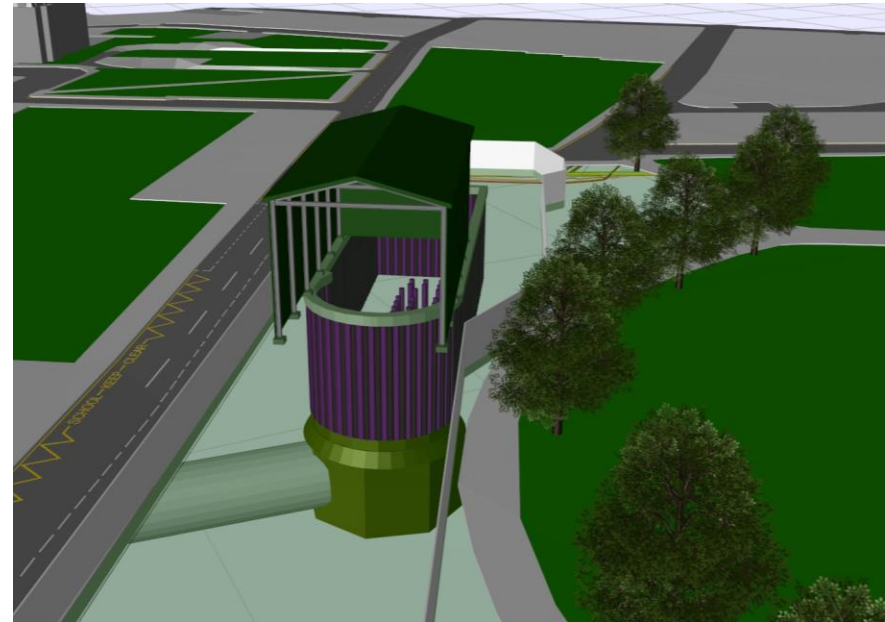


Acoustic Enclosures

Kennington Green

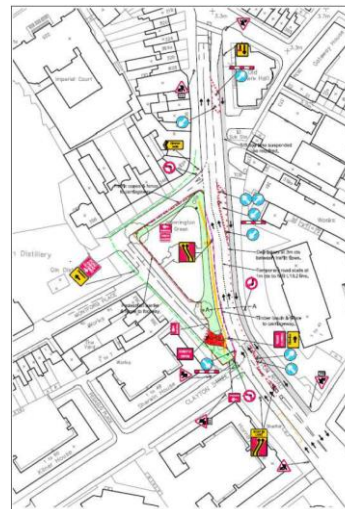
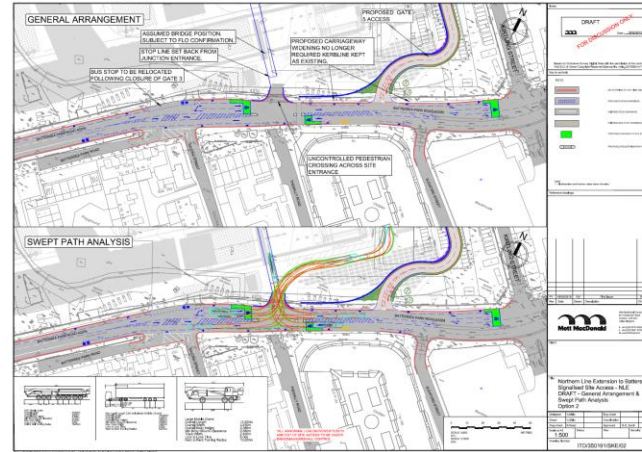


Kennington Park



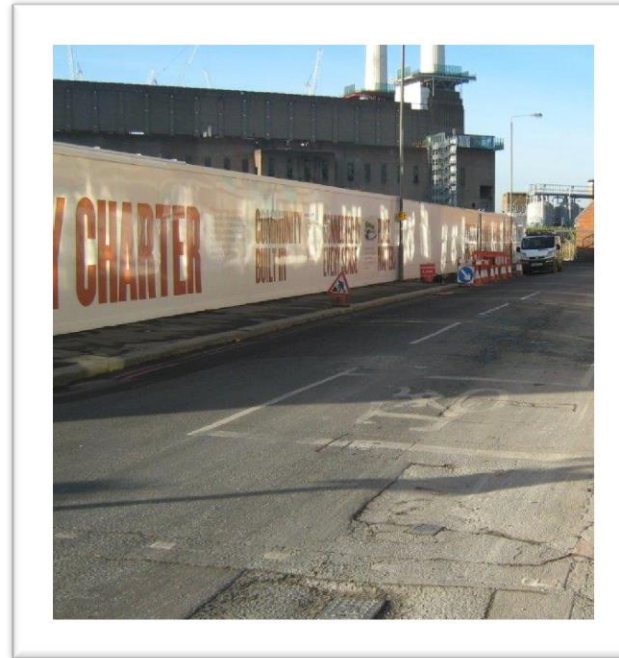
Traffic Management Plans

- Traffic Management Plans are with Local Authorities. Approval sought within next few weeks
- Vehicles entering and leaving are being modelled to get the best flows
- Vehicles leaving site will be jet washed and road sweepers will operate in the area
- All vehicles drivers will be trained and vehicles will be fitted for cycle safety



Hoardings

- Hoardings procured for all sites
- TfL design team working on design options sympathetic with the environment.
- Hoardings will be 2.4 metres high
- Corporate TfL standards to be followed
- A survey is to be carried out at to establish the suitability of the existing planned hoardings at Kennington Green and Battersea



Consents

Approvals granted

Planning Condition 5 - removal of trees at Kennington Green and Kennington Park	L B Lambeth	Granted February 2015
Nine Elms Section 61 Consent (Control of Pollution Act – noise and vibration)	L B Wandsworth	Granted February 2015
Battersea Section 61 Consent (Control of Pollution Act – noise and vibration)	L B Wandsworth	Granted February 2015

Current applications under determination

All sites – application to discharge planning condition 10 - Archaeology	LB Lambeth and LB Wandsworth	Submitted February 2015
All sites – application to discharge planning condition 7 – CoCP pt B	LB Lambeth and LB Wandsworth	Submitted January 2015
Kennington Park, Kennington Green – applications for a Section 61 consent under the Control of Pollution Act - the minimisation of construction noise and vibration	LB Lambeth	Submitted March 2015



Consents continued

Current applications under determination

Kennington Park - application to discharge planning condition 18 – yellow hatched box junction – Kennington Park Place/Road	LB Southwark	Submitted January 2015
Kennington Park and Kennington Green – application to (initially) discharge Conservation Area Consent condition C (reinstatement)	L B Lambeth	Submitted January 2015
Nine Elms and Battersea - application to discharge planning condition 9 – Contaminated Land	LB Lambeth and LB Wandsworth	Submitted February 2015
Battersea – applications for approvals under Schedule 8 (Protective Provisions) of the TWAO – works within the river.	Marine Management Organisation	Submitted March 2015

Key forthcoming applications for approval

Battersea – applications for approvals under Schedule 8 (Protective Provisions) of the TWAO – works within the river.	EA, PLA	Planned be submitted March 2015
Kennington Station - application to discharge planning condition 19 – Kennington Station passenger flow monitoring protocols	LB Southwark	Planned be submitted early 2015 (direct by TfL)
Kennington Park and Kennington Green - application to discharge planning condition 9 – Contaminated Land	LB Lambeth	Planned be submitted March 2015



NLE Complaints summary



FERROVIAL AGROMAN
LAING O'ROURKE JV

Date	Organisation	Address	Details of complaint	Response	Status
08/01/2015	Resident	Kennington Road	Reported wrong tree removal notifications at Kennington Green	Lambeth is dealing with the mistake at Lambeth and referred to the tree officer at Lambeth. Notification removed from incorrect tree.	Closed
16/01/2015	Resident	Imperial Court	Noise and nuisance near her property	Not related to our works, Chivas. Dealt within 24h. Though her initial contact was December 2014 Meeting held with resident and representative. Resident satisfied with outcomes.	Closed
26/01/2015	Resident	Kennington Road	Plants outside the green being removed.	The plants were removed by LBL and with no possibility of being reinstalled	Closed
22/01/2015	Resident	Imperial Court	Hoardings around the Montford Place site	Two visits have been held with resident and solutions are being investigated.	Closed
13/02/2015	Resident	Kennington Road	Complaint about the relocation closure of the Post box by the Green	The post box have been relocated to a nearby location. Resident was satisfied with how the complaint was dealt with	Closed
24/02/2015	Resident	Ravensdon Street	Enquiry about grouting, defect surveys and deeds and date of CLG clashing with residents association meeting	Email was sent to resident addressing her enquiry. She was satisfied with response	Closed
06/03/2015	Resident	Kennington Road	Enquiry about a broken bollard outside Kennington Road	The bollard was reinstated within 1 days. Traffic Management in pace	Closed



NLE Complaints summary

Date	Organisation	Address	Details of complaint	Response	Status
09/03/2015	Resident	Montford Place	Complaint about vehicle exit safety at Kennington Green	Netting around the fencing was removed to improve visibility	Closed
17/03/2015	Resident	Montford Place	Vehicle passing at Montford Place	Visit to resident and brief to subcontractor to avoid future occurrence	Closed
17/03/2015	Resident	Kennington Rd	Night work around Kennington Green in two occasions during March	First report unable to clarify whether NLE was responsible for the works, second report confirmed and subcontractor has been re-briefed and made aware of CoCP B requirements.	Closed
17/03/2015	Residents	Montford Place and Kennington Rd	Complaint about damage to trees at Kennington Green	An arboricultural specialist has been instructed to carry out an assessment.	Closed
March 2015	Residents	Route Wide	A number of complaints and enquiries have arrived to NLE regarding clarity of settlement deeds letter sent March 13	A second letter was sent out with FAQ's and the timescales for replies extended	Open

NLE Complaints

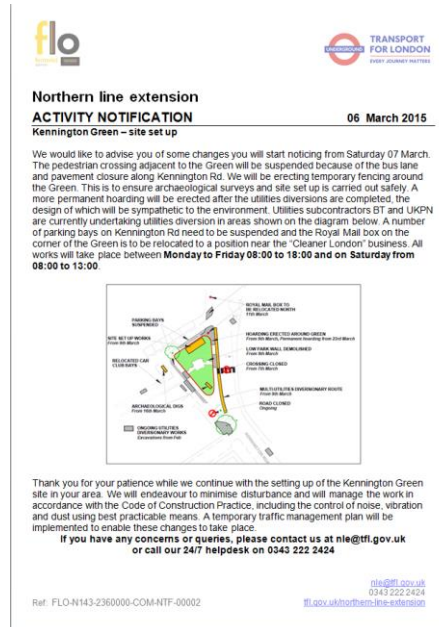


Royal Mail Requested Location Post Box Ex Kennington Green




Updates and newsletters

- Activity Notifications have been sent to notify works on all four sites
- Emailing list is updated regularly and notification are sent electronically
- Quarterly Newsletters sent in November 2014 and March 2015



Northern line extension
ACTIVITY NOTIFICATION 06 March 2015
Kennington Green – site set up

We would like to advise you of some changes you will start noticing from Saturday 07 March. The pedestrian crossing adjacent to the Green will be suspended because of the bus lane and pavement closure along Kennington Rd. We will be erecting temporary fencing around the Green. This is to ensure archaeological surveys and site set up is carried out safely. A more permanent hoarding will be erected after the utilities diversions are completed, the design of which will be sympathetic to the environment. Utilities subcontractors ST and UKPN are currently undertaking utilities diversion in areas shown on the diagram below. A number of parking bays on Kennington Rd need to be suspended and the Royal Mail box on the corner of the Green is to be relocated to a position near the 'Cleaner London' business. All works will take place between **Monday to Friday 08:00 to 18:00 and on Saturday from 08:00 to 13:00.**



Thank you for your patience while we continue with the setting up of the Kennington Green site in your area. We will endeavour to minimise disturbance and will manage the work in accordance with the Code of Construction Practice, including the control of noise, vibration and dust using best practicable means. A temporary traffic management plan will be implemented to enable these changes to take place.

If you have any concerns or queries, please contact us at nle@tfl.gov.uk or call our 24/7 helpline on 0343 222 2424

Ref: FLO-N143-2360000-COM-NTF-00002

nle@tfl.gov.uk
0343 222 2424
tfl.gov.uk/northern-line-extension

Transport for London



Northern line extension

March 2015

Boosting jobs in the local economy



Careers expo at South Bank University

The Northern line extension will support the regeneration of Vauxhall, Nine Elms and Battersea and help create up to 25,000 jobs and 18,000 homes.

Local jobs and apprenticeships are a key priority. We have spoken with local authorities, job brokerages and our supply chain to staff the construction of the Northern line extension. The project will support around 1,000 jobs and 50 apprenticeships.

Our contractor Ferrovial Agroman Laing O'Rourke (FLO) will have a team of around 500 people at the busiest period of construction.

We recently attended a careers expo at South Bank University where Wandsworth and Lambeth school and college students were able to find out about career opportunities and apprenticeships.

We also attended a similar event for students in Southwark and Lambeth at Goldsmith's University of London.

MAYOR OF LONDON



Jobs and apprenticeships

TfL's existing programmes

- Skills & Employment Strategy, Delivery Plan for Schools and Young People

Employment/Skills/Diversity on the NLE programme

- FLO is working in partnership with TfL and the local authorities – including the Nine Elms Vauxhall Strategy Board Employment, Training & Business Charter, Wandsworth Chamber of Commerce and Nine Elms Supply Chain
- Make sure employment/training opportunities are advertised within the job opportunity/brokerage schemes operated by Southwark, Lambeth & Wandsworth councils
- Encourage job starts for workless people in London, placement & taster positions, apprenticeships, skills development for staff, engagement with schools
- A Strategic Labour Needs and Training Plan is being developed with LA

Jobs and apprenticeships


Careers Expo for students 4-5 March 2015 , Southwark

- Co-ordinated by Southwark Council
- Hosted at Goldsmith University NLE in attendance at the event
- More than 150 students attended NLE workshop
- Encourage young people to consider construction as professional option
- Promote the NLE benefits and awareness amongst young people



Jobs and Business Opportunities

- FLO attended a Lambeth organised “How to be the best bet for buyers” event
- 19 February at the Kia Oval
- This was to present opportunities at the NLE and procedures on how to enter for tender packages
- FLO attended a networking event with local business of Wandsworth

Lambeth

How to be the Best Bet for Buyers

Where:
Kia Oval
Kennington
London SE11 9SS

When:
Thursday
19 February 2015
9am - 3pm

Do you want to...
• Hear about major vehicle maintenance contracts
• Network with other businesses to develop partnerships to bid for larger contracts?
• Get expert advice on preparing and submitting tenders?
• Find out about major developments and work packages available for local subcontractors?
• Sign up with major housing contractors looking to contract with local subcontractors?
• Network with potential clients?

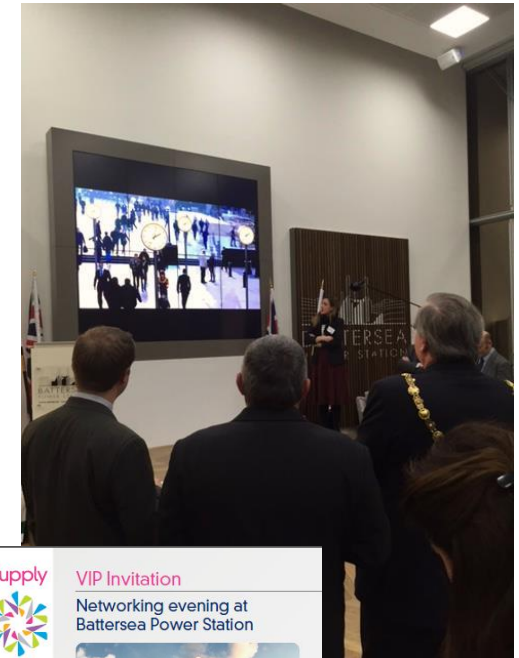

Hear from developers looking to work with businesses like you. Hear from industry experts and get free advice from the many exhibitors attending on the day. From understanding the pre-qualification process including health and safety, to financing major contract wins, to micro-fund-developments, by getting up to talking on large contracts. Throughout the day you will have the opportunity to speed network with other businesses and speak to exhibitors about the contracts and what you need to do to win that contract.

Programme

9.00am	Event opens and registration
9.30am	Clr Jack Rogers – Cabinet Member for Jobs and Growth
9.30am	Introducing South London Procurement Network
9.45am	Break – Attendees visit exhibitor stands
10.00am	Introducing Lambeth Procurement
11.00am	Julie Hamer - Member of CIPS
11.15am	Break – Attendees visit exhibitor stands
12.00pm	Lunch and Networking
1.00pm	Meetings – How to win that contract
1.15pm	Break – Attendees visit exhibitor stands
1.30pm	Ferrovial Agroman Laing O'Rourke (FALC)
1.45pm	Break – Attendees visit exhibitor stands
2.00pm	St. James/Benksley Group
2.15pm	Networking
3.00pm	Close

South London Procurement Network

To confirm your attendance please email info@slpn.org.uk with company and attendee's names.

Supply

Nine Elms
On the South Bank

BATTERSEA POWER STATION

VIP Invitation

Networking evening at Battersea Power Station

Find out more about Supply Nine Elms on the South Bank at www.nineelms.london.com

Thursday 19 March, from 6.30-8.30pm.

As a participant of the first year of the Supply Nine Elms on the South Bank programme you are invited to an informal networking event to include:


- Registration/Drinks Reception
- Welcome from Wandsworth and Lambeth Council
- Updates from the Battersea Power Station Development Company and the Nine Elms Vauxhall Partnership
- Networking with other buyers and suppliers from the programme

Please RSVP to reserve your place and download your ticket at: <http://supplynineelmsve.eventbrite.com>

Due to security restrictions at the Power Station you must RSVP via <http://supplynineelmsve.eventbrite.com> by midday 18 March to be admitted on the night.

This programme of events is delivered in the iconic Battersea Power Station and Lambeth is a world-class Supply On - New Partnership.

Wandsworth Lambeth




Community engagement strategy



- Draft Strategy discussed at the June – July cycle of CLG's
- Core CLG received all comments made
- Southwark Career Expo March 2015
- **6 months look ahead include:**
- Strategic Labour Needs and Training Plan in collaboration with LA.
- Youth and School Engagement Plan
- Arts and Culture Strategy with TfL
- Activities around all four sites to ensure communication and engagement:
Drop in sessions / Visits / Events / School Liaison
- First five work experience students from Wandsworth start June 2015



THANK YOU

