



# Northern Line Extension

## Battersea

Community Liaison Group 19.01.15



# Summary Update



- Following Ferrovial Agroman Laing O'Rourke (FLO) appointment in Sept 2014 and TWAO approval in Nov, enabling works have now started in KG and KP areas.
- Main works to start during 2015 following CoCP B approval.
- Four Community Drop in Sessions held during first week of December for comments on CoCP B.
- FLO is now in the process of gaining approval for the CoCP B by the Local Authorities. Issue by 26.01.15



# NLE Project Draft timetable

Year	Key milestones
2014	Transport and Works Act Order decision, Design & Build contract signed
2015	Agreement on Code of Construction Practice Part B, Start of main works at all sites
2016	Start of Tunnel Boring Machines
2017	Completion of tunnelling
2018	Fit out of new stations, Kennington shafts complete inc reinstatement, work at Kennington station complete
2019	Testing, commissioning, trial operations
2020	NLE complete and in service

# Battersea look ahead



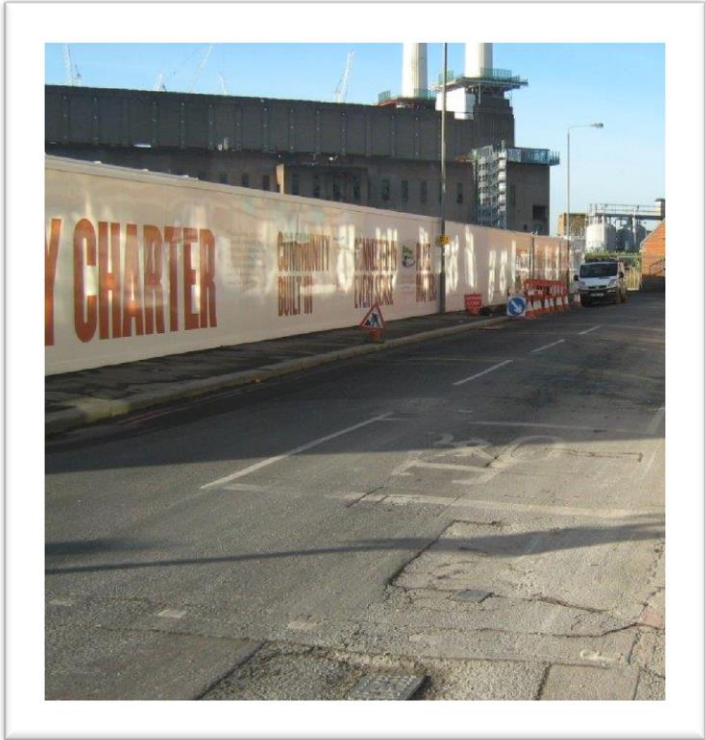
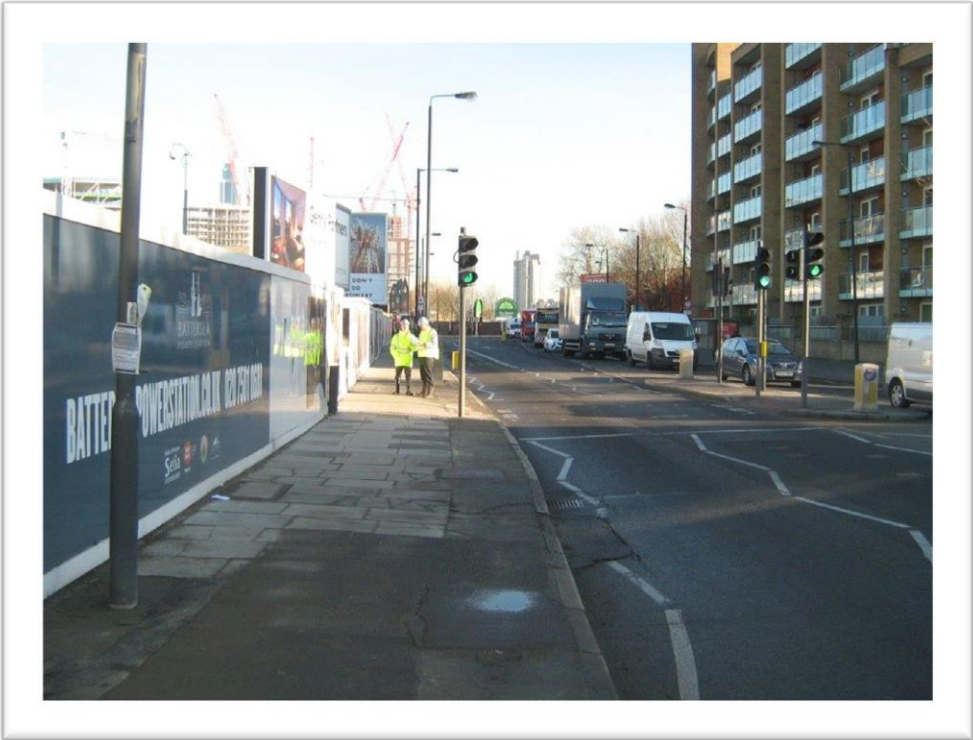
Year	Key milestones
Jan- Mar 15	<p data-bbox="469 339 1599 439">Site mobilisation programme issued Client principally comprising:</p> <ul data-bbox="469 511 1806 1068" style="list-style-type: none"><li data-bbox="469 511 1806 611">• Topographical surveys of station, crossover box, Battersea Park Road, NR Lines and conveyor route.</li><li data-bbox="469 682 1806 782">• Trial holes/GRP (Ground Penetrating Radar) surveys to confirm exact locations of existing service installations</li><li data-bbox="469 853 1806 896">• Obtaining ground and water samples</li><li data-bbox="469 968 1806 1068">• Undertaking a UXO survey (Unexploded Ordinance). Radar detection from ground level.</li></ul>



# Hoardings

- FLO is now procuring hoardings for all sites.
- Conversations with TfL for standards and design options on-going
- FLO is looking for input on hoarding graphics.
- Corporate TfL standards
- Dialogue with local CLGs on proposals for each location
- Feedback and proposals welcome from the CLG.

# Hoarding at Battersea



# Ground Investigation

- Further ground investigation/ boreholes are currently planned at Battersea site.
- FLO is now in concept design process with TfL developing more effective solutions to what the conservative proposal of the contract allowed.
- Compensation grouting is likely to be eliminated from program.
- Ground conditions for tunnelling predominantly London Clay. An ideal tunnelling medium.
- Groundwater/ step plate junction within a full face of impermeable London Clay.

# Defect Surveys



- Defect Surveys to be undertaken by a qualified chartered building surveyor or engineer on properties predicted to experience 1mm or more settlement.
- Defect Surveys around shafts commence in May/June to ensure that the surveys are undertaken within 6 months of piling works programmed for August 2015.
- Defect Surveys in areas of Spray Concrete Lining (SCL) works and Step Plate Junctions to be undertaken at a later date in advance of construction (second half of 2016 and first half of 2017).
- TfL to contact affected properties via letter.
- A minimum of 4 weeks notice will be given to building owners prior to the defect survey being carried out.
- Where necessary a second survey will be undertaken to establish the difference between the two assessments.
- There will be a written and photographic record and a copy will be available to the property owner.





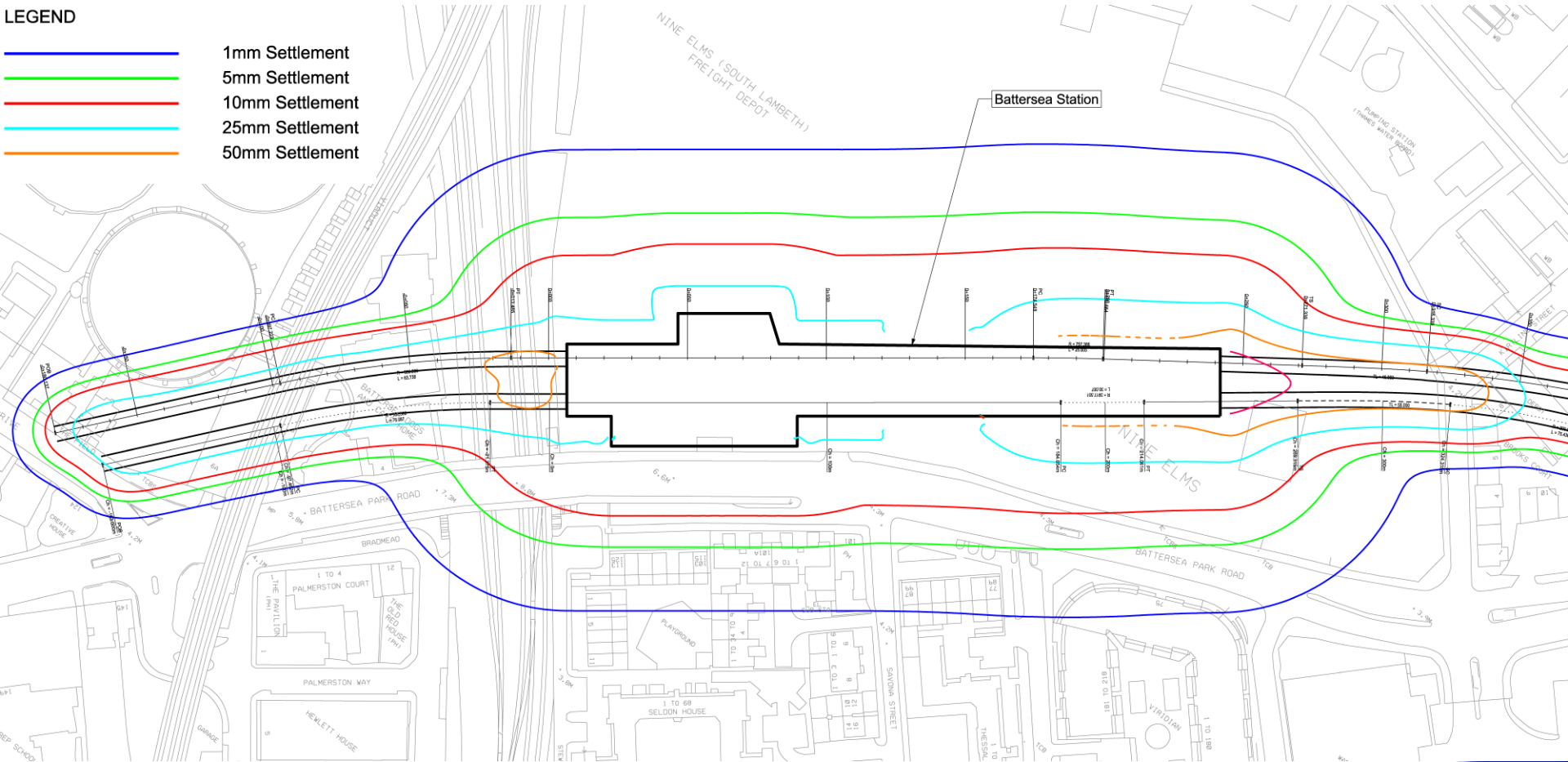
# Battersea



## Preliminary Settlement Contours

### LEGEND

- 1mm Settlement
- 5mm Settlement
- 10mm Settlement
- 25mm Settlement
- 50mm Settlement



# Measuring & Monitoring



- Monitoring outline design completed end January 2015.
- Consultants currently carrying out damage assessments which will inform the detailed monitoring scope.
- Monitoring tender package to market at the end of January, and award to follow around March.
- Monitoring installation to start May-June 2015
- A minimum of 4 weeks notice will be given to building owners prior to the installation of monitoring equipment.
- Envisaged that the monitoring equipment will comprise BRE studs (structure levelling studs) and 3D geodetic prisms.



# Monitoring techniques

## Buildings – Real time data:

### 3D geodetic prisms



Automatic Total Station (ATS)



Prisms

**ATS: an electrical/optical instrument used in modern building construction to measure slope distances from the instrument to a particular point.**



# Monitoring techniques

## Buildings – Manual data:

### BRE studs (structure levelling studs)



# Code of Construction Practice

## Part B



- Four drop in sessions w/c 01.12.14 hosted by FLO senior leadership
- Information boards on programme of works, environmental mitigation, site layout and finished schemes
- 47 registered attendees
- 145 comments raised through the paper and online questionnaire
- Feedback from Kennington Green Supporter Group (KGSG), and further meetings held with Kennington and Wandsworth Neighbourhood Action Group (KNWAG) and residents to discuss specific issues



# Code of Construction Practice Part B

- Discussion process closed on 19.12.14
- COCP Part Bs being updated prior to formal submission to the local authorities by the 26 January.
- Summary of feedback and responses will be produced.



# Code of Construction Practice Part B



# Traffic Management Plans

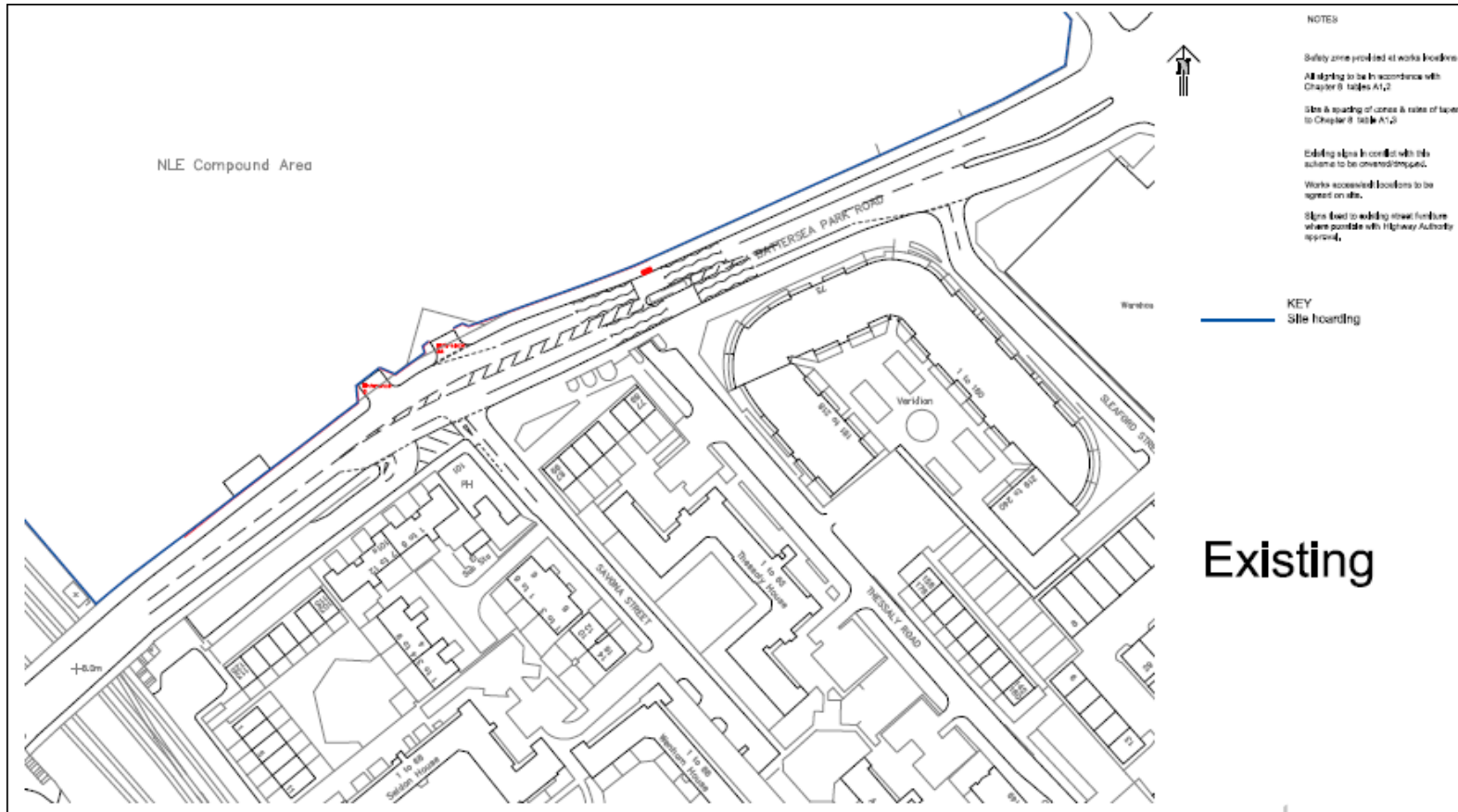


- Meetings with Local Authorities on-going.
- First draft of Traffic Management Plans (drawings) to be ready w/c 12 Jan
- Traffic Management Plan (document) include a schedule forecast for temporary traffic management plans (drawings) for next six months.
- Temporary traffic management plans (drawings) will follow when FLO have engaged statutory undertakers.
- These are submitted to Local Authorities.

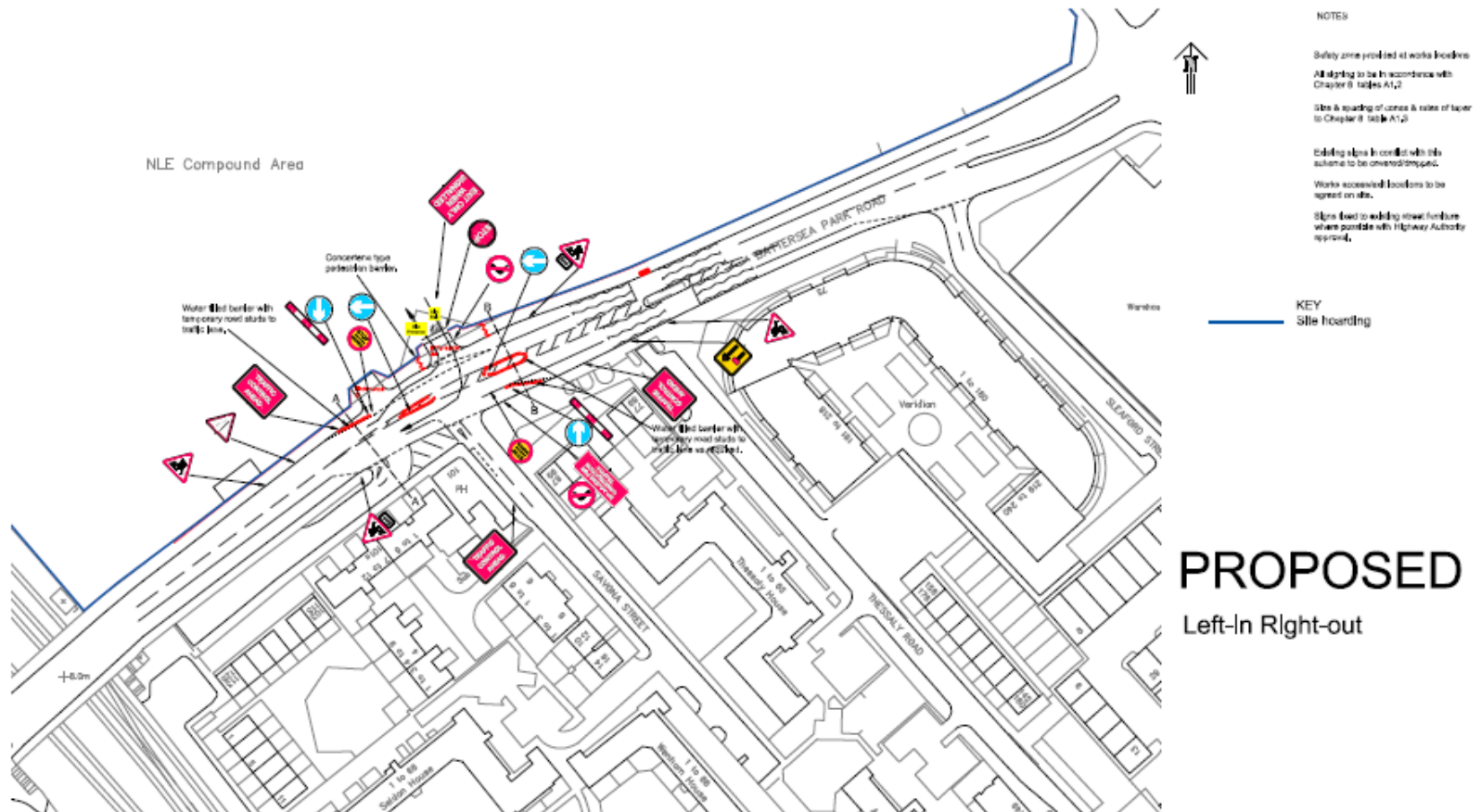




# Traffic Management Plans Battersea (existing)



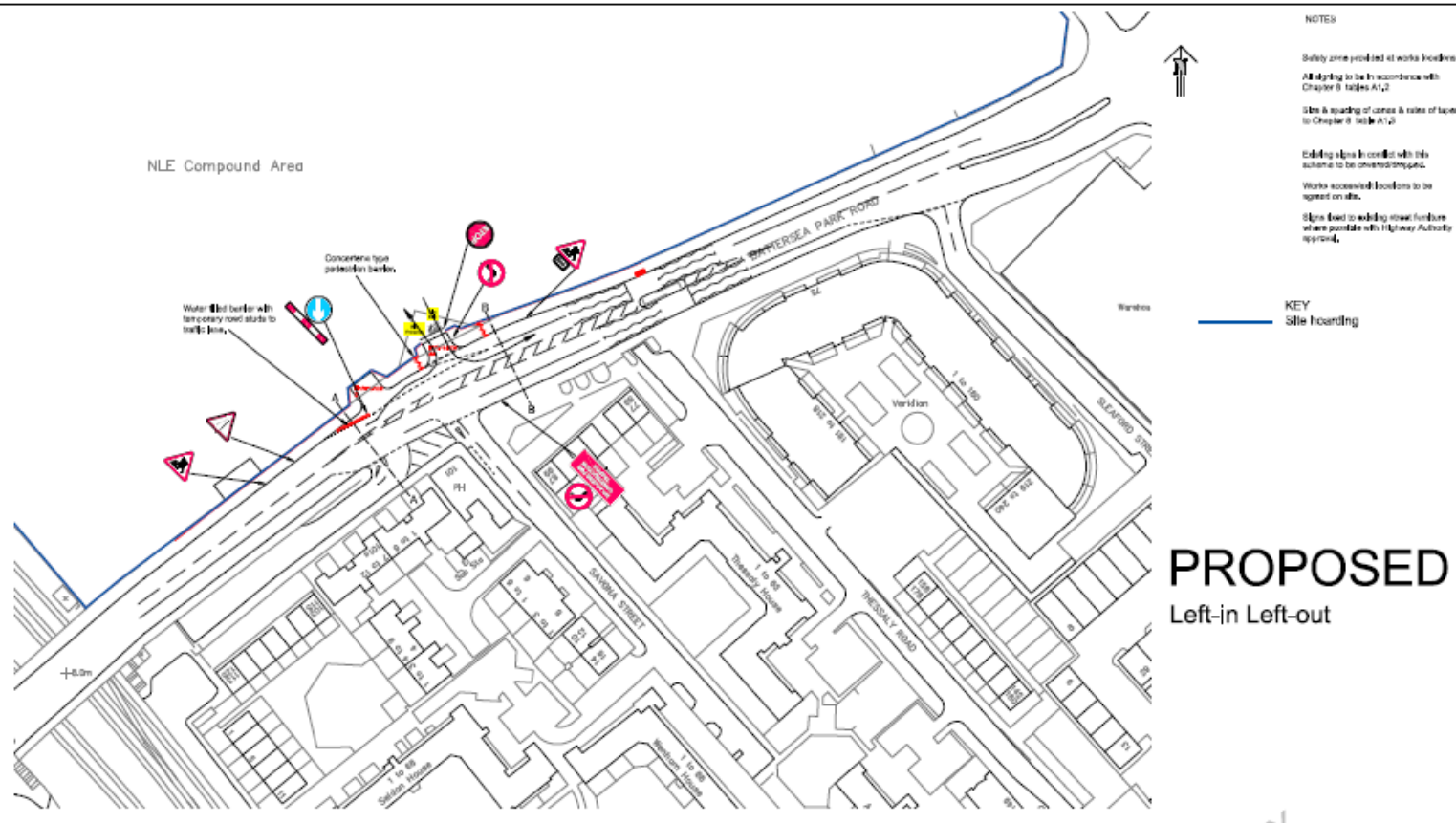
# Traffic Management Plans Battersea (proposed)



**PROPOSED**  
Left-In Right-out



# Traffic Management Plans Battersea (alternative)



# NLE Complaints / Enquiries Summary

- 2 valid complaints received from October - December 14

Date	Organisation	Address	Details of complaint	Response	Status
07/11/2014	Resident	Kennington Lane	Reported damaged caused by a fox accessing patios through Compass temporary hoarding	Response to resident within 24 hours - telephone call and meeting. Worksite was repaired by Compass and subsequently by FLO.	Closed
17/12/2014	Resident	Kennington Road	Reported disruption due to site lighting reflection to the inside of the bedroom.	Response to resident within 24 hours - telephone call and email. The issue was resolved in the same day by applied shielding to the walkway illumination lights.	Closed



# NLE Complaints / Enquiries Summary



- Immediate solution given to complaint received at Kennington Rd.



# Updates and newsletters

- Quarterly Newsletter sent at the end of November with updates on NLE.
- Electronically sent to over 1,600 people. Advertised on website and letter drop of 2,500 copies.
- Next quarterly newsletter due at the end of February.
- Local activity notification have been sent.
- Monthly Activity update due for end of January.

# Updates and newsletters



Transport for London

## Northern line extension

November 2014

### Northern line to Battersea gets the go-ahead



New stations at Battersea and Nine Elms support regeneration in Vauxhall, Nine Elms and Battersea

The extension of London Underground's Northern line from Kennington to Battersea has been given the go ahead by the Secretary of State for Transport.

London Underground's contractor, Ferrovial Agroman Laing O'Rourke, will build the extension including two new stations at Battersea and Nine Elms. Following a Transport and Works Act Order (TWAO) being granted this month, construction is planned to commence in early 2015.

This vital extension to the Underground is part of Transport for London's wider investment programme over the next decade to transform the Northern line and will support regeneration in Vauxhall, Nine Elms and Battersea. The benefits include:

- Supporting the creation of 24,000 new jobs and more than 18,000 new homes
- Building two new stations that will bring thousands more people within easy walking distance of the Tube network
- Reducing pressure on Vauxhall station and the existing Northern line south of Kennington
- Cutting journey times to the West End and City to just under 15 minutes

MAYOR OF LONDON



## Northern line extension

Activity Notification

Montford Place Site Establishment

05 December 2014

Dear Neighbour

The next stage of work on the Northern Line Extension (NLE) project is about to commence and as a neighbour we would like to advise you of some work that you may notice at the Montford Place site. From 8 December, we will commence establishment of our construction support site at Montford Place. This site is being prepared to support construction of a new shaft at Kennington Green and the associated utility enabling works. The shaft will be essential to the safe construction and operation of the NLE tunnels.

When the work will take place  
Our working hours are controlled and we monitor all activity to ensure it is within noise levels agreed with Lambeth councils.

Our core work hours are:  
- Monday to Friday 08:00 to 18:00  
- Saturday 08:00 to 13:00  
(Apart from use of the office and provision of security. Furthermore, deliveries from 07:00)

What to expect  
The works will include:  
- Refurbishment of boundary fencing  
- Levelling of site  
- Establishment of site cabins  
- Delivery and storage of materials  
- Site services, lighting and security

What we will do  
As the Principal Contractor for NLE, FLO will manage the work in accordance with the Code of Construction Practice. This will include monitoring for noise, vibration and dust. We will have traffic marshals on site to help with traffic and vehicle access.

We apologise in advance for any inconvenience our works may cause you and we will endeavour to keep disruption to a minimum. If you have any queries, please contact our 24-hour public helpdesk. See details below.

Kind regards  
Mabel García Aranda / FLO Stakeholder Manager



Ref: FLO-N202-2360000-COM-NTF-00001

[nle@tfl.gov.uk](mailto:nle@tfl.gov.uk)  
0343 222 7878  
[tfl.gov.uk/northern-line-extension](http://tfl.gov.uk/northern-line-extension)



# Consents



## Approvals granted

Montford Place discharge of planning conditions 6 and 7 (boundary treatments, lighting and CCTV)	L B Lambeth	Granted December 2014
Montford Place Section 61 Consent (Control of Pollution Act – noise and vibration)	L B Lambeth	Granted December 2014

## Current applications under determination

Kennington Park and Kennington Green – partial discharge of planning conditions 5 & 7 – works to trees	L B Lambeth	Submitted December 2014
--	-------------	-------------------------





# Consents



## Key forthcoming applications for approval

All sites – application to discharge planning condition 10 - archaeology	LB Lambeth and LB Wandsworth	Planned be submitted February 2015
All sites – application to discharge planning condition 7 – CoCP pt B	LB Lambeth and LB Wandsworth	Planned be submitted late January 2015
All sites – applications for a Section 61 consent under the Control of Pollution Act - the minimisation of construction noise and vibration	LB Lambeth and LB Wandsworth	Planned be submitted late January 2015
Kennington Park - application to discharge planning condition 18 – yellow hatched box junction – Kennington Park Place/Road	LB Southwark	Planned be submitted late January 2015
Kennington Park and Kennington Green – application to (initially) discharge Conservation Area Consent condition C (reinstatement)	L B Lambeth	Planned be submitted mid January 2015
Battersea – applications for approvals under Schedule 8 (Protective Provisions) of the TWAO – works within the river.	EA, PLA, MMO	Planned be submitted February 2015
Kennington Station - application to discharge planning condition 19 – Kennington Station passenger flow monitoring protocols	LB Southwark	Planned be submitted late January 2015 (direct by TfL)



# Jobs and apprenticeships



## TfL's existing programmes

- Skills & Employment Strategy, Delivery Plan for Schools and Young People

## Employment/Skills/Diversity on the NLE programme

- FIO to work in partnership with TfL and the local authorities – including the Nine Elms Vauxhall Strategy Board Employment, Training & Business Charter
- Make sure employment/training opportunities are advertised within the job opportunity/brokerage schemes operated by Southwark, Lambeth & Wandsworth councils
- Encourage jobstarts for workless people in London, placement & taster positions, apprenticeships, skills development for staff, engagement with schools



# Skills and Youth Engagement



## Careers Expo for students (2/12 Wandsworth, 3/12 Lambeth)

- Co-ordinated by Wandsworth BEST. NLE and FLO in attendance at the event.
- More than 100 students attended NLE (LU-FLO) workshop.
- Encourage young people to consider construction as professional option.



# Skills and Youth Engagement



- [http://www.wandsworth.gov.uk/news/article/12653/wandsworth\\_students\\_explore\\_nine\\_elms\\_careers](http://www.wandsworth.gov.uk/news/article/12653/wandsworth_students_explore_nine_elms_careers)

## Careers Expo for students organised by Southwark

- March 2015
- LU and FLO to participate

The screenshot shows the Wandsworth Council website. At the top, there is a navigation bar with the Wandsworth logo and links for 'Your accounts', 'Report, apply and pay', 'News', and 'Maps'. Below this is a breadcrumb trail: 'Home > Latest news > Wandsworth students explore Nine Elms careers'. A sidebar on the left lists various services such as 'A-Z of services', 'Benefits and Council Tax', 'Business and licensing', etc. The main content area features the article title 'Wandsworth students explore Nine Elms careers', a release date of 'Wednesday 3rd December 14', and a 'Comment on this article' link. The article text states: 'More than 200 hundred local students attended a Nine Elms careers event yesterday (Tuesday) at London South Bank University to explore the opportunities Europe's biggest regeneration project is bringing to the brighter borough.' Below the text is a photograph of students at a careers expo. A caption below the photo reads: 'More than 200 students came to the Nine Elms Skills Expo'. At the bottom of the article, it lists major employers involved: 'Major employers involved in the area's revival took part in the event including St James Group, Skanska, Canlion, Battersea Power Station Development Company, Northern Line Extension, Covent Garden Estate, and the London Underground.'



# Community engagement strategy



- Draft Strategy discussed at the June – July cycle of CLG's
- Core CLG received all comments made
- Updated Strategy and site specific engagement plans table
- Working document CLG comments and suggestions welcome.
- Southwark Career Expo March 2015.

