

# Northern Line Extension

## MONTHLY UPDATE

May-June 2016

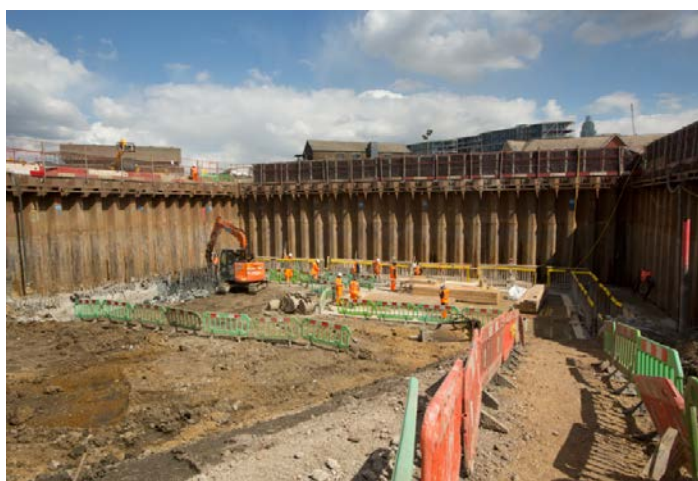
### NLE Battersea Power Station

Continuing with the Northern line extension (NLE) works near you, as we progress we would like to bring you up-to-date on what has been achieved so far and advise you of the main activities planned for the coming 4-8 weeks.

#### What has been completed

A big milestone was achieved on the Battersea worksite in April with the completion of the diaphragm wall in the crossover box situated directly behind our office cabins. This is essentially a reinforced vertical concrete wall built around the perimeter of the area, where the future trains will cross over before continuing their journey.

The completion of this activity then enabled us to commence the first stage of the excavation works (we have dug to a depth of 4 metres so far). We intend to reduce the ground level down by 18 metres in total to ultimately reach the foundation slab. (Please see pictures below).



Excavation works in the cross over box



Image to show the excavator cropping the diaphragm wall

Seven plunge columns (steel beams) have now been installed in the centre of the cross over box to help support the future over site development.

#### What is planned

The construction of the concrete capping beam continues in the cross over box. This will sit on top of, and cap, the recently constructed diaphragm walls. This beam will form part of the foundations for the future structures above the station. We do not expect this activity to be noisy.

Following the completion of the temporary works i.e. guide wall installation, diaphragm wall construction is now under way in the station box to the west of our site. The next phase of works will follow the same sequence of activities that have taken place in the cross over box. These works are currently progressing according to programme.



Capping beam construction



Diaphragm wall construction in the station box

Since the removal of obstructions from the river bed in April, we have now been able to continue with our commitment to reduce the amount of lorries on the road by increasing our barge movements up to 10 per week.

As part of NLE school and youth engagement strategy, we are visiting local schools in the borough of Wandsworth to hold assemblies to teach children about the construction industry and also raise awareness about the multitude of jobs undertaken on a project like the NLE. With our two tunnelling machines due to arrive on site at the end of this year, we have now launched a series of activities with local primary schools to find a name for these 600 tonne machines. More visits are scheduled for the end of the month.

Please join us for a community drop in session next **Tuesday 24 May from 15:00 – 19:00**. This will be an opportunity to get a complete overview of the progress being made at the Battersea NLE site and also view the works from our platform located above our office cabins. This will take place at 18:00.

**Our core hours:  
0800 to 1800 Mondays to Fridays and 0800 to 1300 on Saturday**

Your feedback is important to us. Please note the details below if you have any questions and queries about the works.

If you would like to be added to the mailing list, please contact us at [nle@tfl.gov.uk](mailto:nle@tfl.gov.uk) or call our 24/7 helpdesk on 0343 222 2424 (Option 1)