

# Site Overview – January 2018



FERROVIAL AGROMAN  
LAING O'ROURKE JV

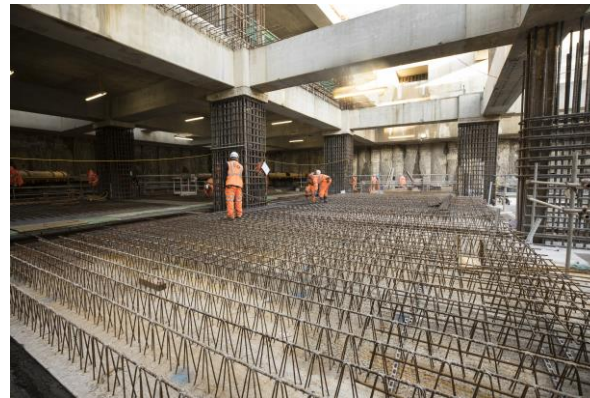
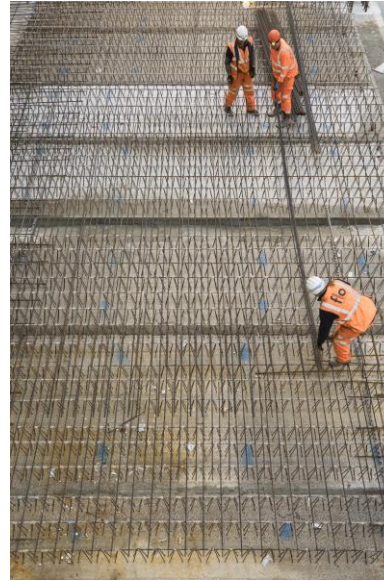




# Site Overview – January 2018



FERROVIAL AGROMAN  
LAING O'ROURKE JV

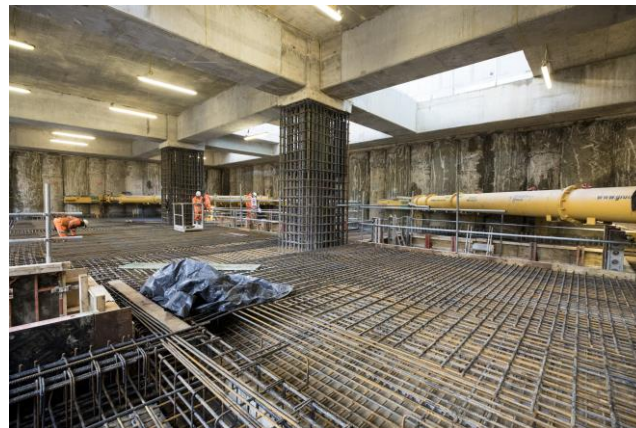


# Summary Update Oct '17 - Dec '17



FERROVIAL AGROMAN  
LAING O'ROURKE JV

- Excavation to Basement level -2 completed
- Precast beams fabrication for basement level -2 completed and installation progressed at 80%
- Basement level -1 lattice plank slabs ongoing
- Basement level -2 lattice plank slabs started
- Basement level -2 columns reinforcement fixing completed.



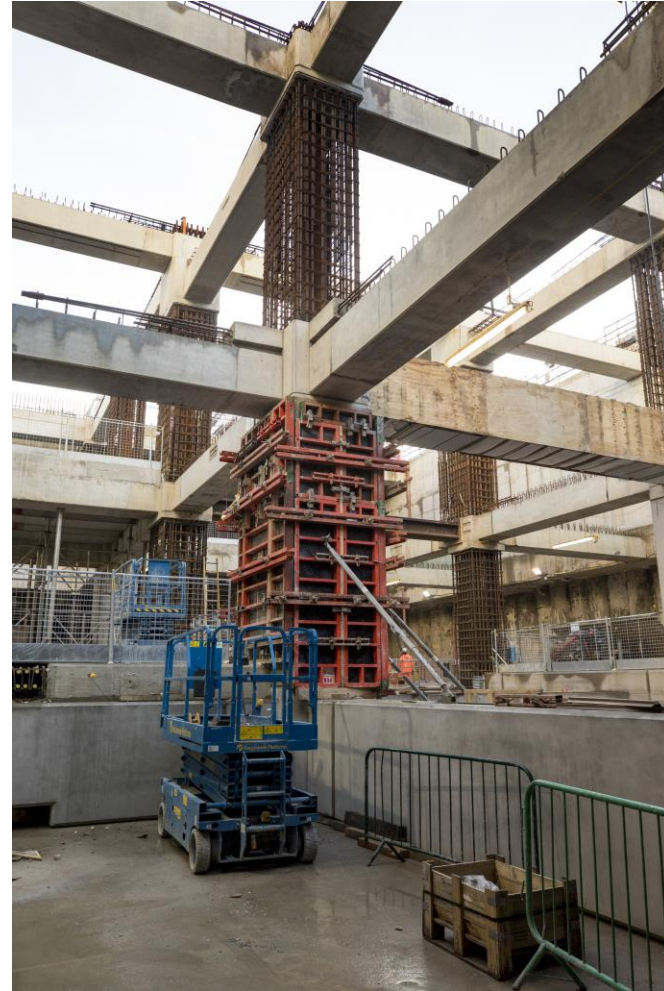


# Look Ahead Jan '18 – Mar '18

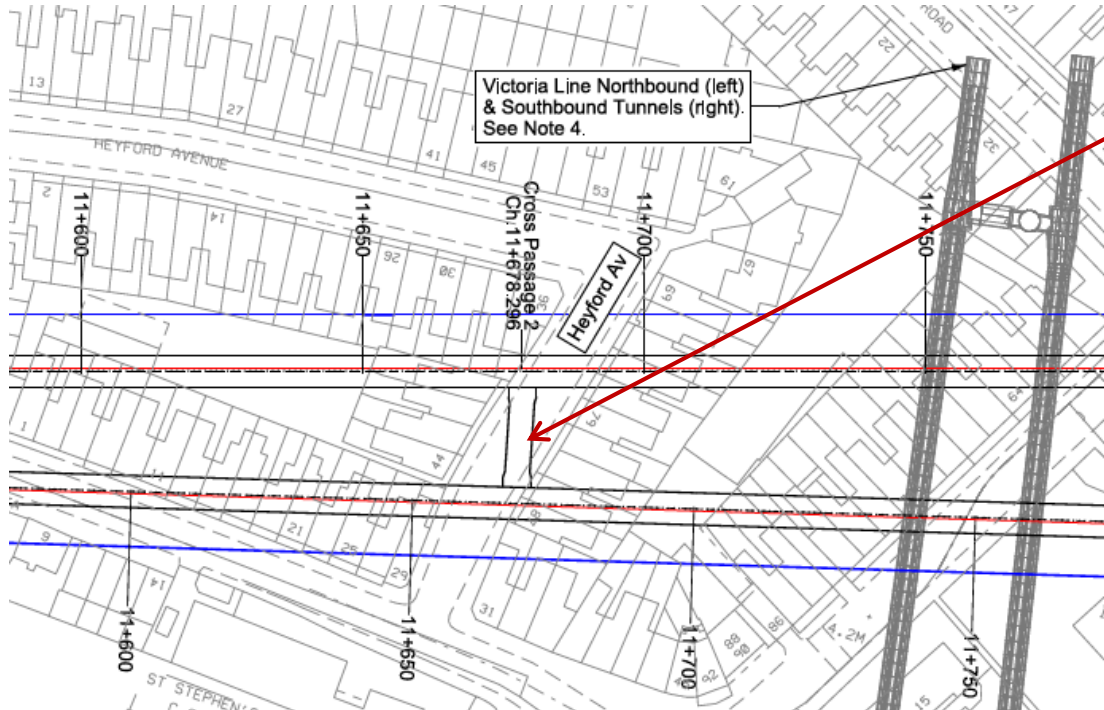


FERROVIAL AGROMAN  
LAING O'ROURKE JV

- Precast beams installation and connection to columns at basement level -2 to be completed
- Columns and structural main walls to be poured
- Lattice plank slab floors to be completed at basement level -2
- Continue excavation to basement level -4
- Demolition of sacrificial tunnels
- Headwall timber heading & SCL works



# Look Ahead Jan '18 – Mar '18

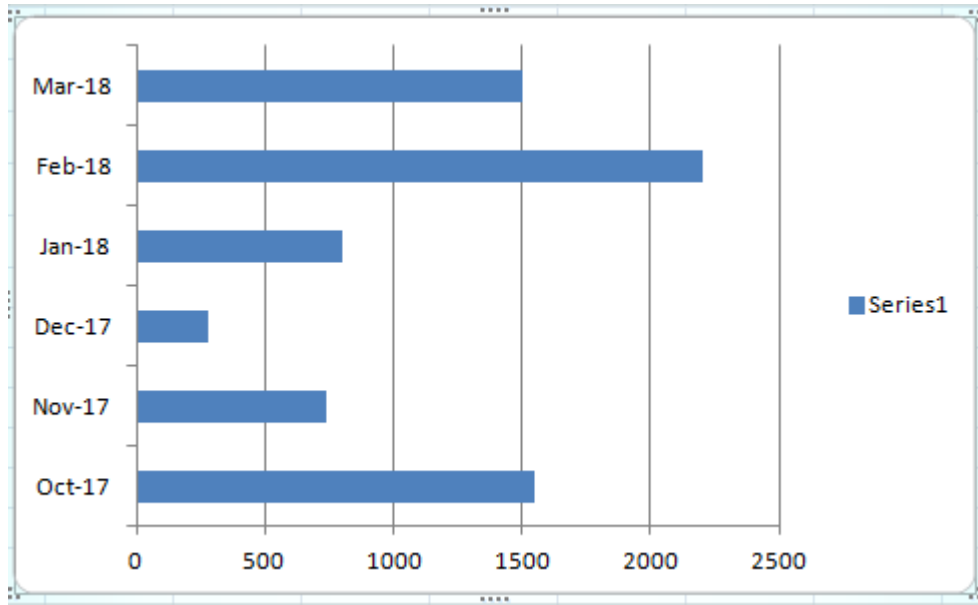


## Cross Passage 2 –

- approx 25m below Heyford Avenue.
- Linking the TBM tunnels.
- Needed for fire escape and emergency access between tunnels.
- Work method involved hand mining to excavate the London clay.
- Highly unlikely to cause any disturbance at the surface.
- Starting mid February for 3months

# Logistics. Vehicle Movements October 17 to March 18

Vehicle movements	
Oct-17	1550
Nov-17	740
Dec-17	280
Jan-18	800
Feb-18	2200
Mar-18	1500



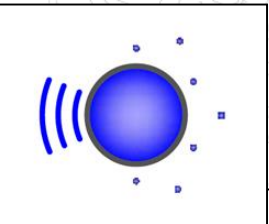
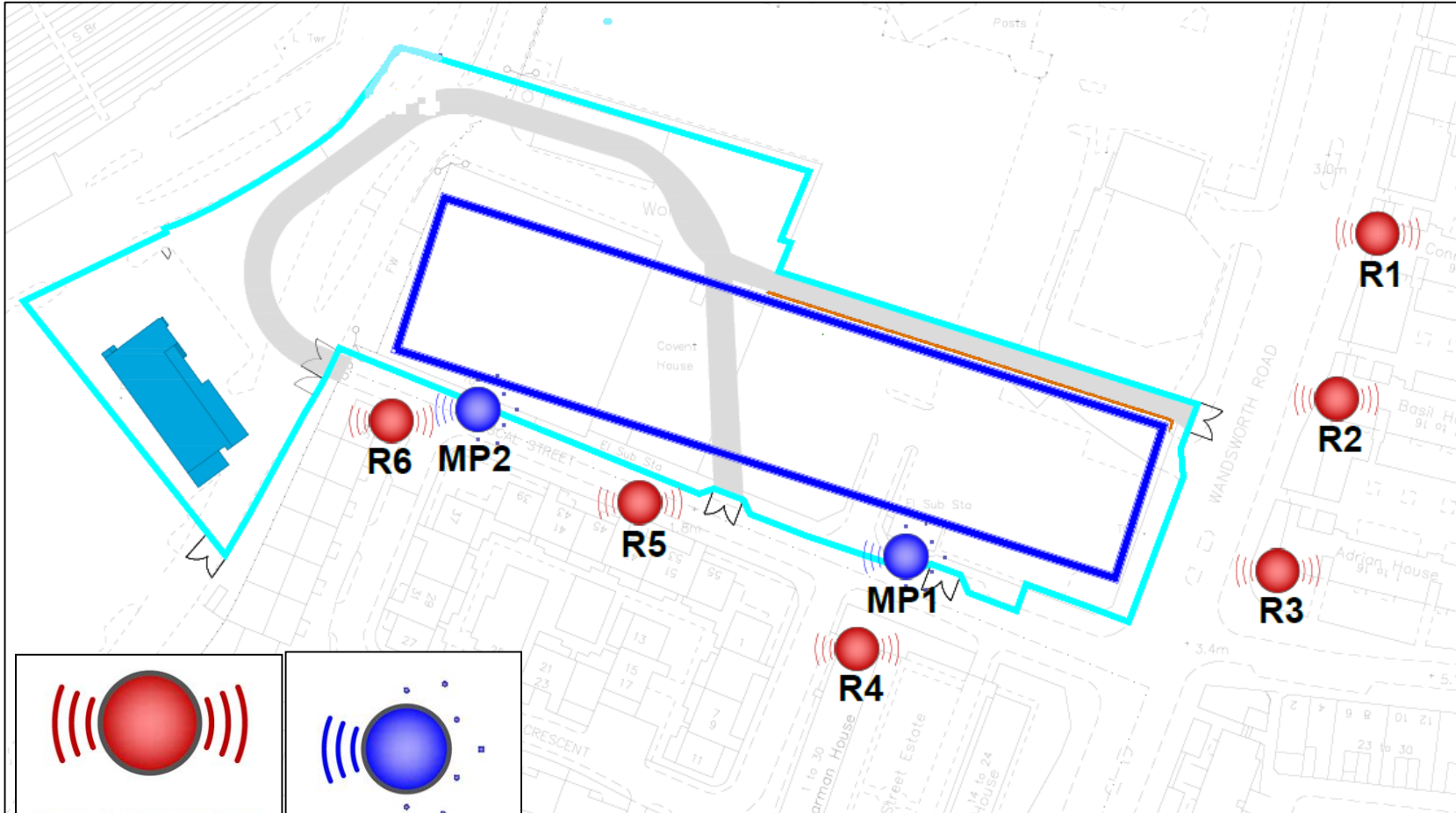
- Principal vehicle movements related to :
  - Muck away operations
  - Concrete, rebar and precast beams deliveries

# Environmental Monitoring Locations

Noise monitoring stations and sensitive



FERROVIAL AGROMAN  
LAING O'ROURKE JV



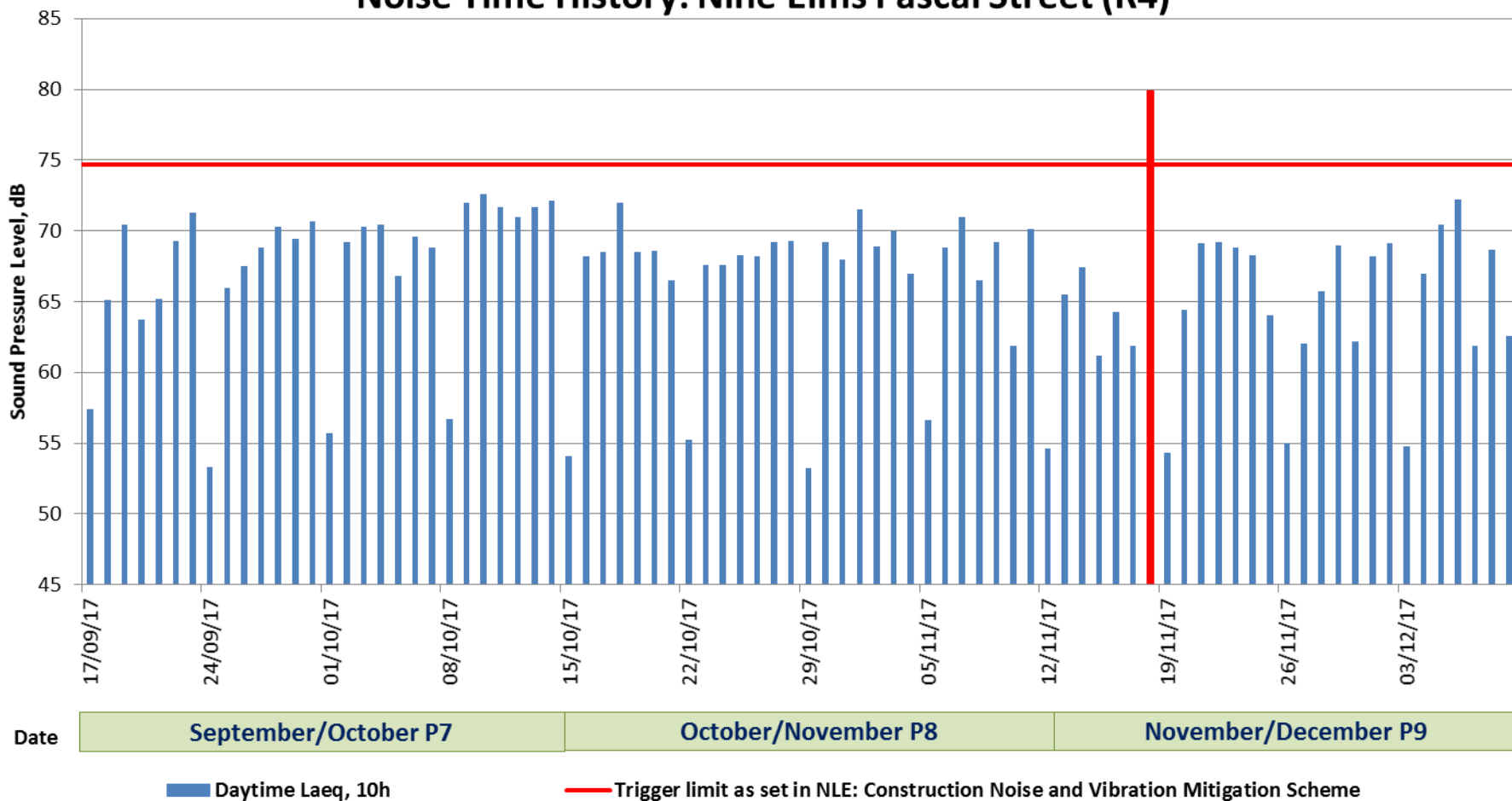
# Noise Monitoring Oct – Dec 2017



FERROVIAL AGROMAN  
LAING O'ROURKE JV

1 No. exceedance on the 18/11/17 – Continuous usage of the concrete pump throughout the day and wash out of the pump and lines. Pump located adjacent to monitor.

## Noise Time History: Nine Elms Pascal Street (R4)



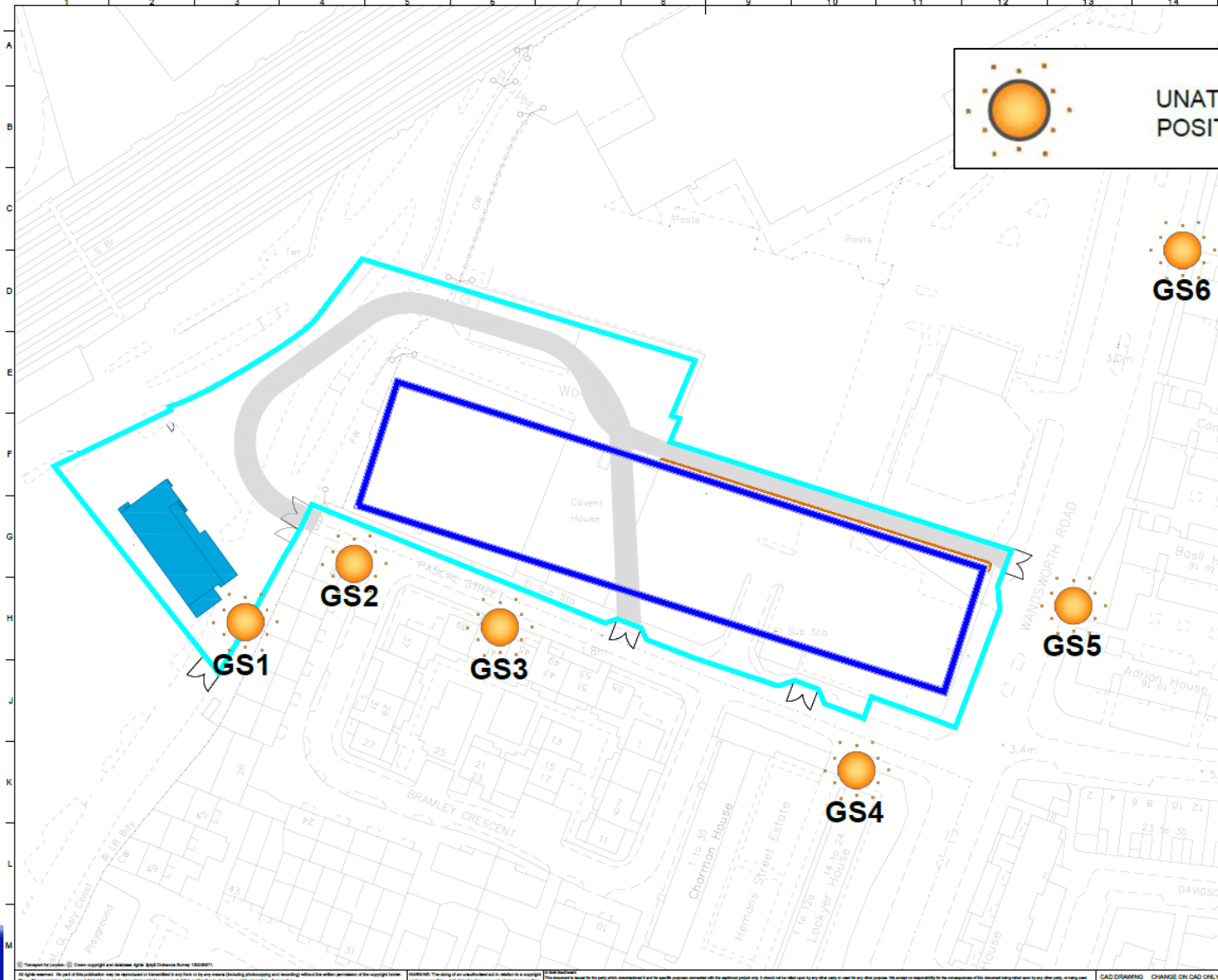


# Environmental Monitoring Locations

## Dust monitoring stations and sensitive receptors



FERROVIAL AGROMAN  
LAING O'ROURKE JV



 UNATTENDED DUST MONITORING POSITION (GLASS SIDE)

 GS6

 GS1

 GS2

 GS3

 GS5

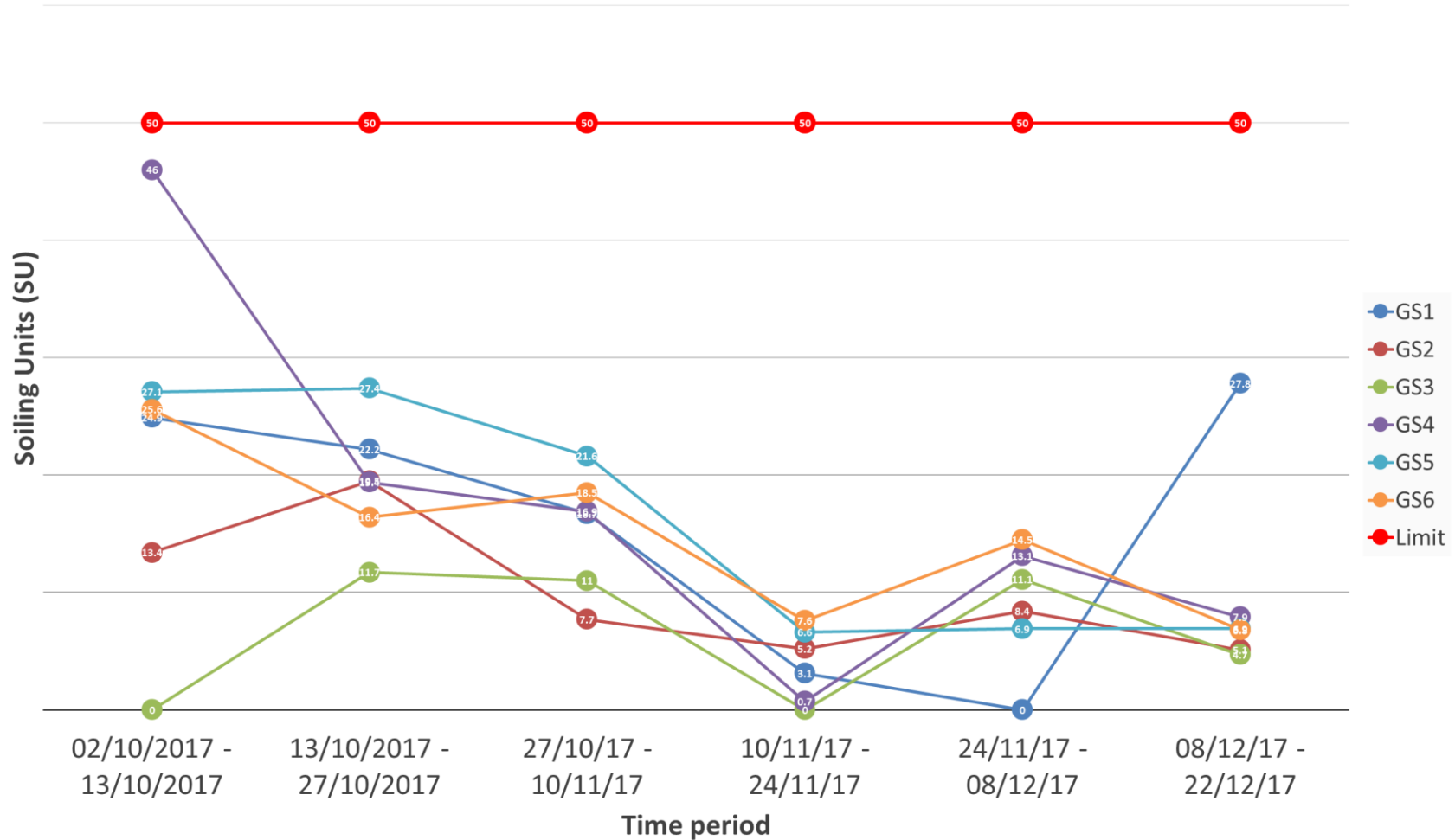
 GS4



# Monitoring Oct – Dec 2017

## Dust slides results – Passive AQ monitoring

NLE - Nine Elms - Fortnightly Passive AQ monitoring (glass slides)

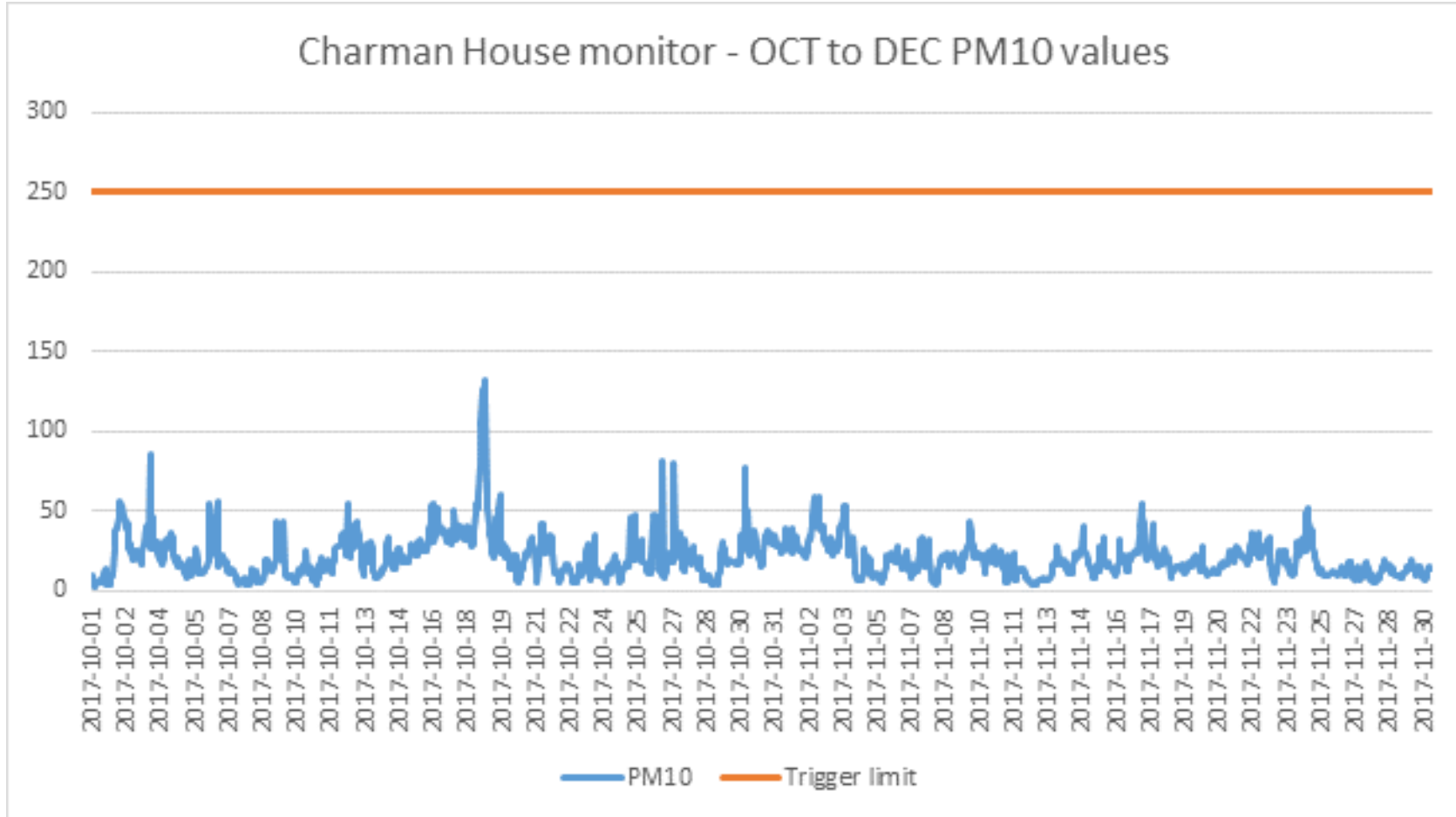


# Monitoring Oct – Dec 2017

Site dust monitoring



FERROVIAL AGROMAN  
LAING O'ROURKE JV



*Note – monitor sent for calibration on 01/12/17*





# NE Monitoring Oct – Dec 2017

For the full report consultation please visit the following link:

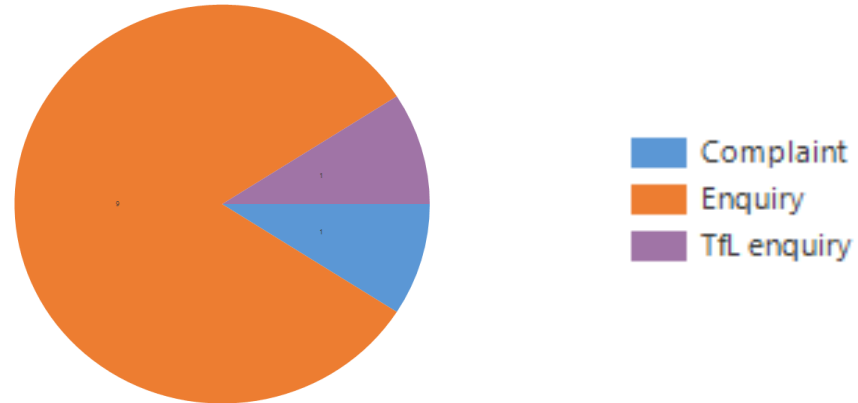
<https://tfl.gov.uk/corporate/publications-and-reports/northern-line-extension>

You will find under the Environmental monitoring reports tab both the “Unattended Noise monitoring reports” and the “Passive air quality monitoring reports”.

# Complaints & Enquiries Summary

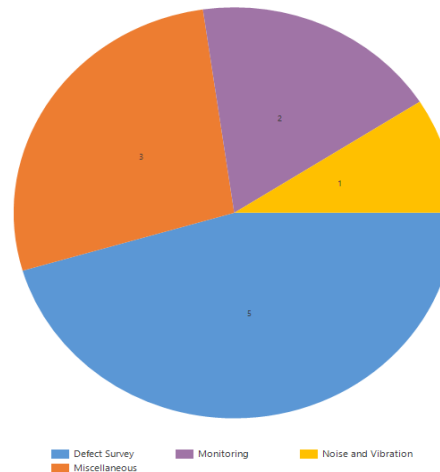
## •Case Type breakdown (11 in total):

- 1 x complaint (9%)
- 9 x enquiries (82%)
- 1 x TfL enquiry (9%)



## •Cases by Category (11 in total):

- 2 x Monitoring (18.2%)
- 1 x Noise & Vibration (9.1%)
- 5 x Defect Survey (45.5%)
- 3 x Miscellaneous (27.3%)



# Your Feedback

Feedback	Action
Request for information on location of tunnel boring machines	Responses sent to those residents who requested the information
Noise from lorry drivers when delivering to site	Tool box talk given to both traffic marshals and drivers reminding them of good behaviour when visiting site.
Road cleaning	Road sweepers working daily.
Proactive engagement ahead of works	Letter drop regarding future works. Changes in working hours and planned activities are communicated in advance.





# NLE Skills and Employment



FEROVIAL AGROMAN  
LAING O'ROURKE JV



- Work experience students from local schools and organisations
- Year 7 students from Sacred Heart visited on 5<sup>th</sup> & 6<sup>th</sup> October for careers event
- Visit from Middlesex University Health & Safety students
- Work placement from Peabody Trust



# Engagement Opportunities

- CLG meetings
- One to one meetings
- Drop in sessions
- School and Youth Engagement
- Stakeholder Activities – project wide events. 9/11 Memorial day / sustainability week

