

# Northern Line Extension

## Nine Elms and Oval

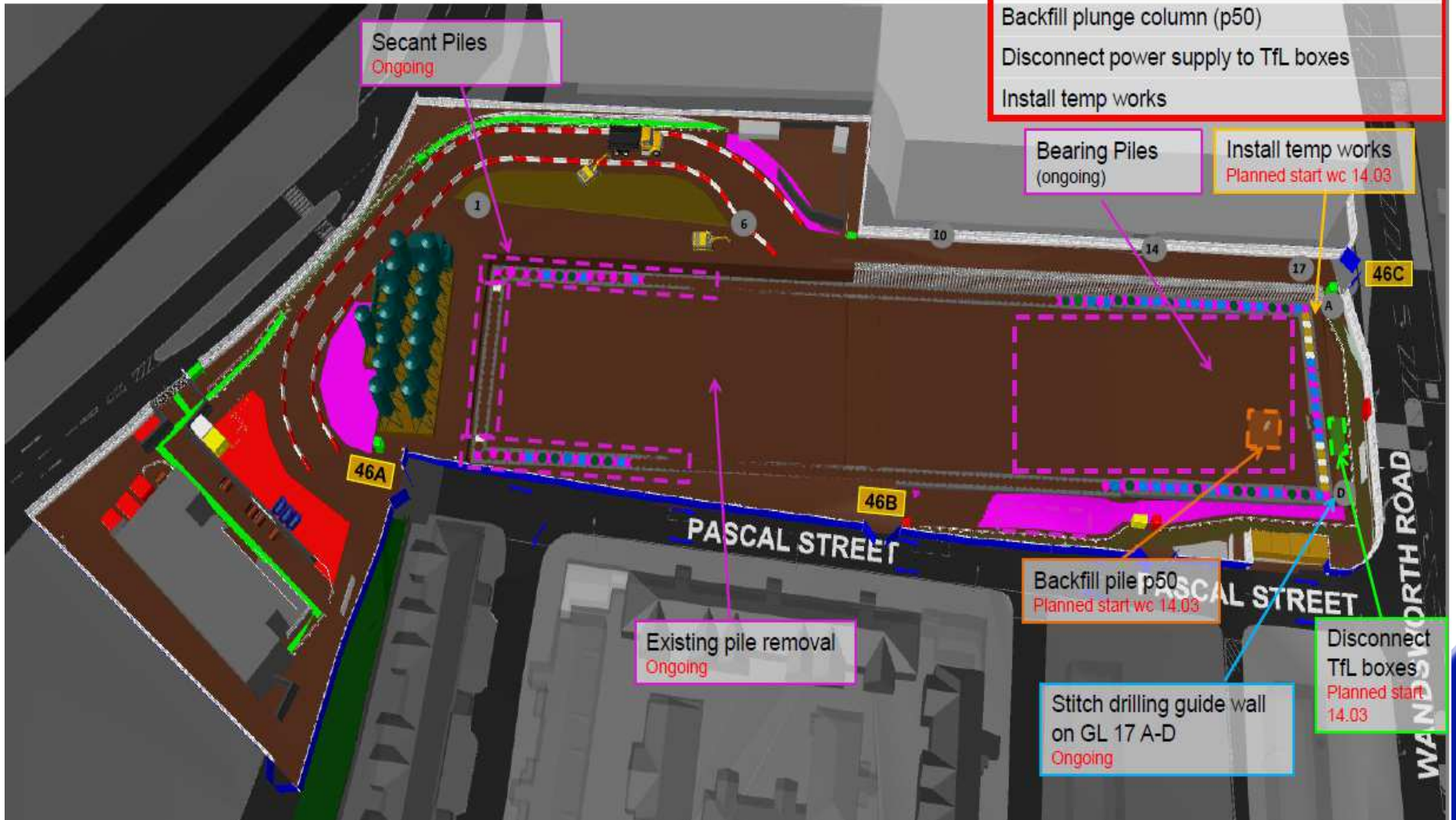
### Community Liaison Group

15.03.16

# Nine Elms – Weekly Look Ahead plan w/c 14/03/16

## PLANNED WORKS (p13w2)

- Piling – 3 m (GL1-4) + 2 bpc (GL14-16)
- Backfill plunge column (p50)
- Disconnect power supply to TfL boxes
- Install temp works



# Summary Update Jan – March 2016



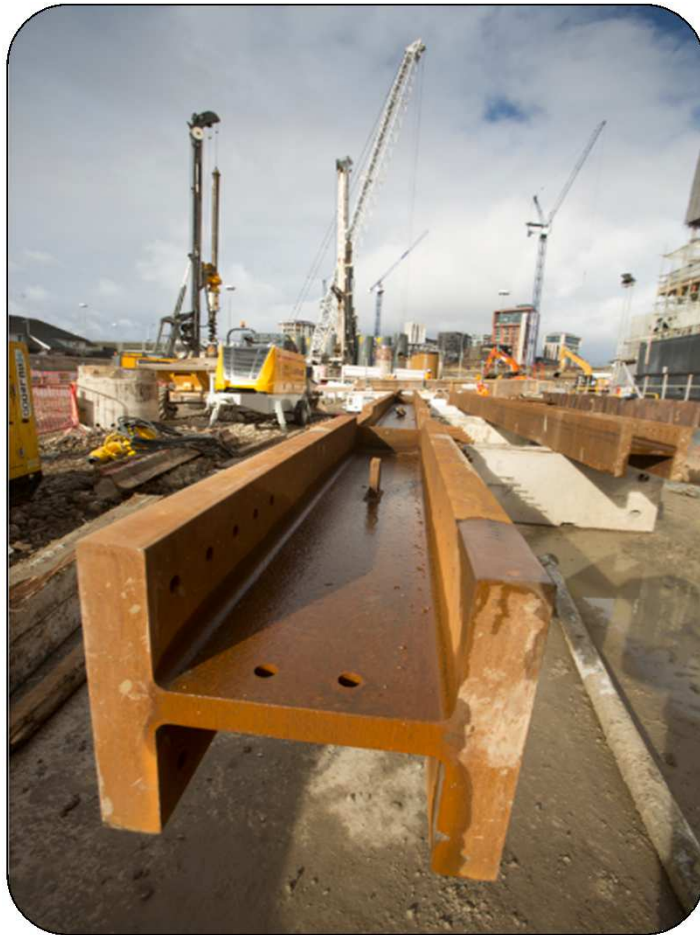
- 27/45 pile obstructions removed clashing with TBM route
- Completion of piling platform and guide wall on the west side of site
- Secant piling completed on the east side of site (Wandsworth Rd)
- Secant piling and bearing piles are ongoing on the west side of site
- TfL Controller Box successfully relocated to the corner of Pascal Street
- Continue construction of bearing pile works including plunge column installation on the east side of site
- On going Thames Water utility works along Wandsworth Road
- Approx. 900 T (average) per week of material removed by barge



# Nine Elms Update Jan – March 2016



FERROVIAL AGROMAN  
LAING O'ROURKE JV

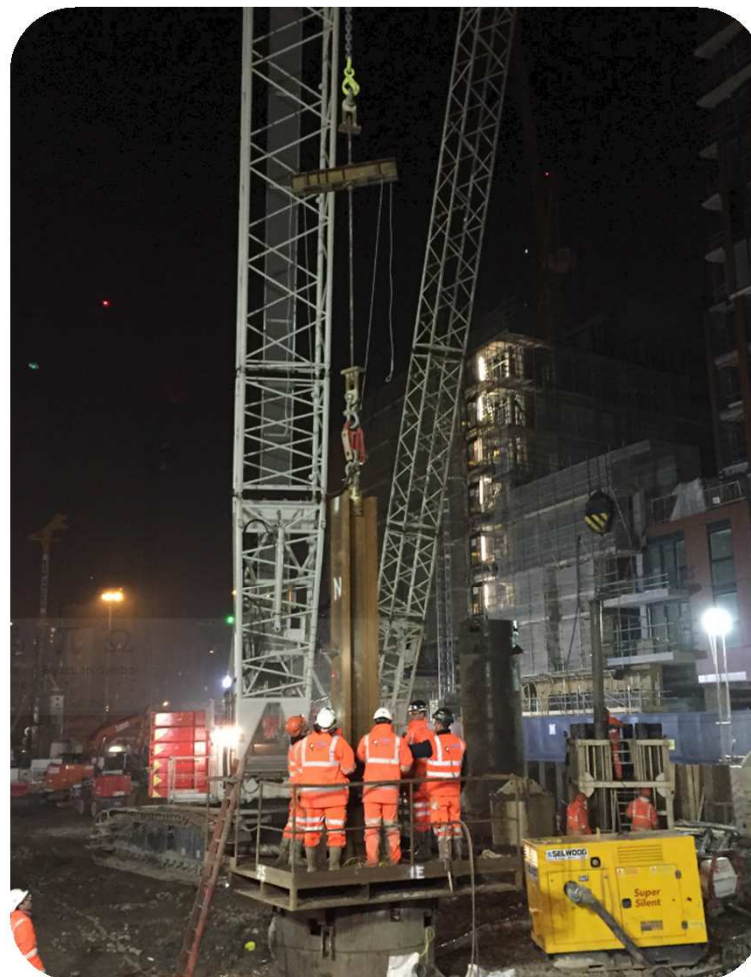
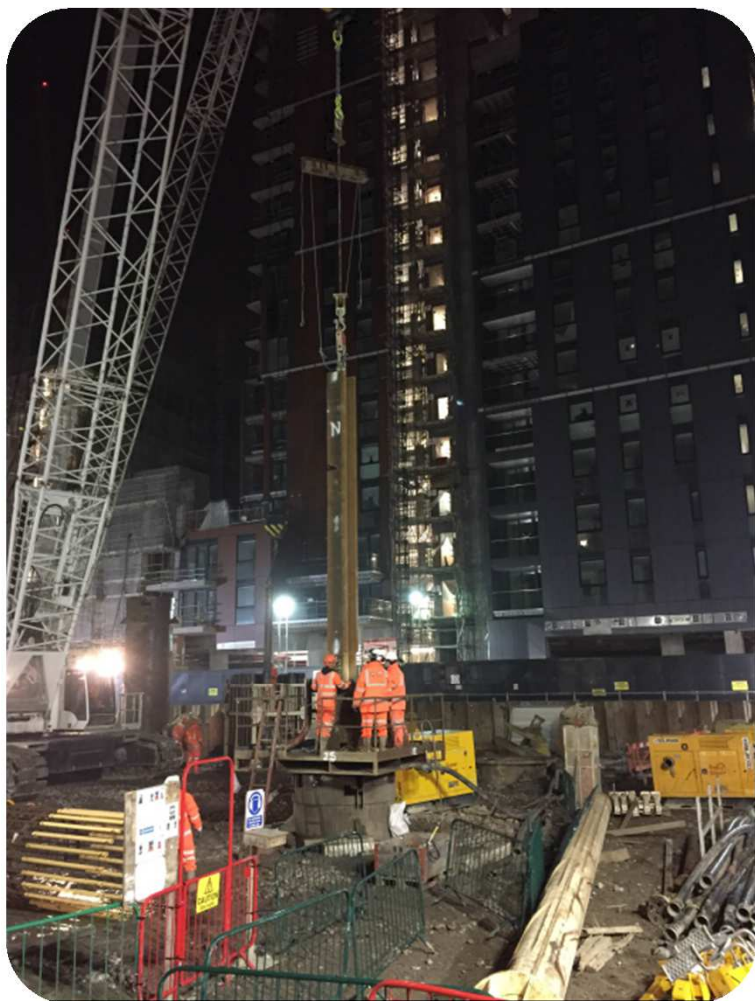


Plunge columns



Plunge columns to be inserted in bearing piles

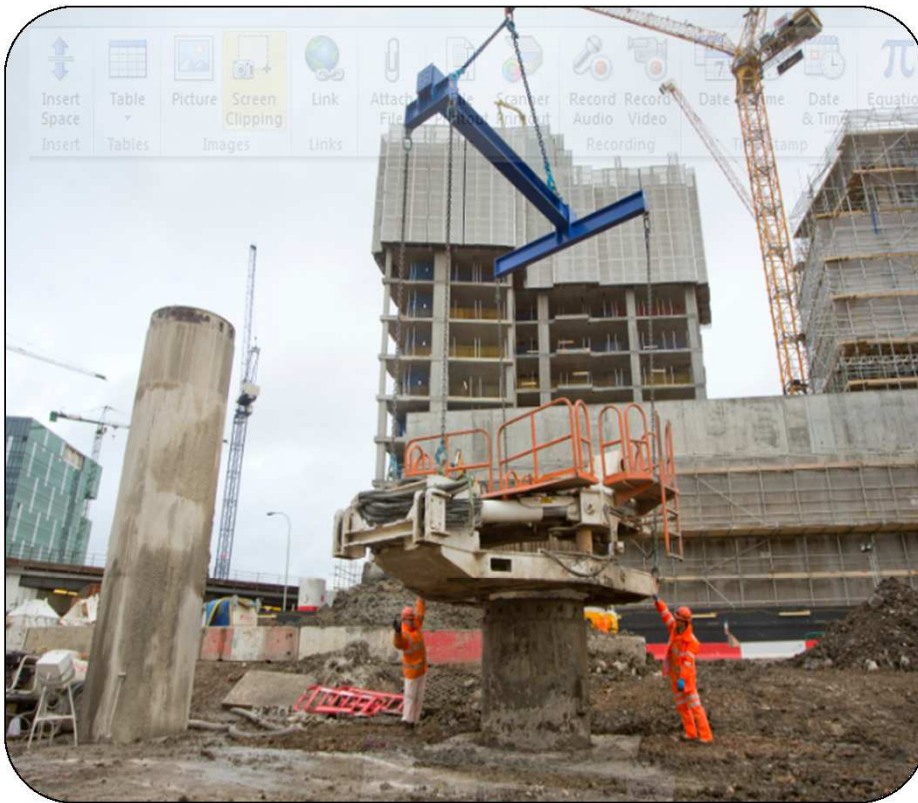




# Nine Elms Update Jan – March 2016



FERROVIAL AGROMAN  
LAING O'ROURKE JV



Oscillator helping to drive the pile casing into the ground



Removal of pile obstructions



# Nine Elms Update Jan – Feb 2016

## Environmental Monitoring

**Noise** - 2 unattended continuous noise monitors

- 1 attended noise monitoring visit 10.02.16

**Air Quality** – 2 unattended continuous Osiris monitors

**Dust** - 6no dust slide locations

## Monitoring Results Summary

- 2 noise exceedances in January (75.2dB & 75.5dB during piling works)
- 2 dust slide exceedances
- 0 vibration exceedances



# Look Ahead April – June 2016

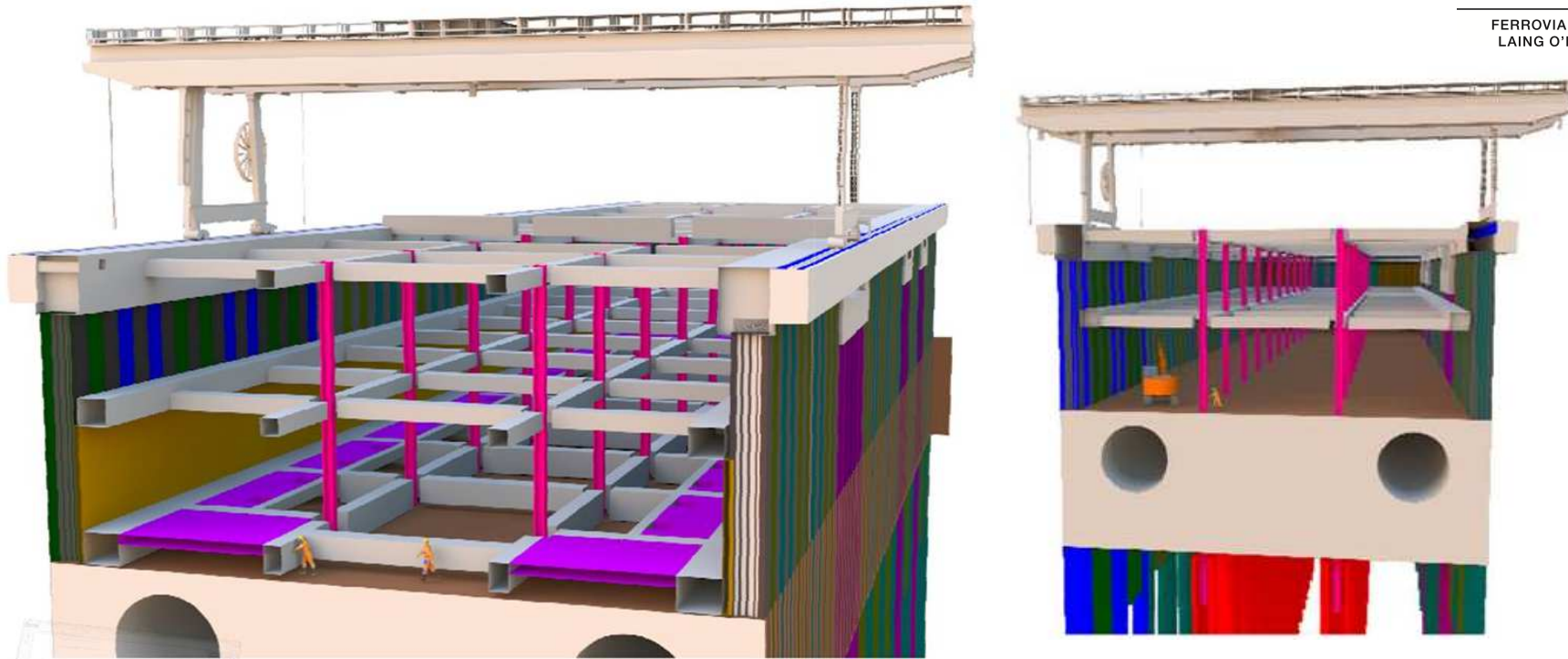


- Guide wall break out and removal on the east side of site and commencement of capping beam construction
- Construction of foundations for the gantry crane
- Installation of gantry crane used for excavation assistance and installing precast beams
- Continue with piling works
- Monitoring installation ongoing





# Illustration of the gantry crane

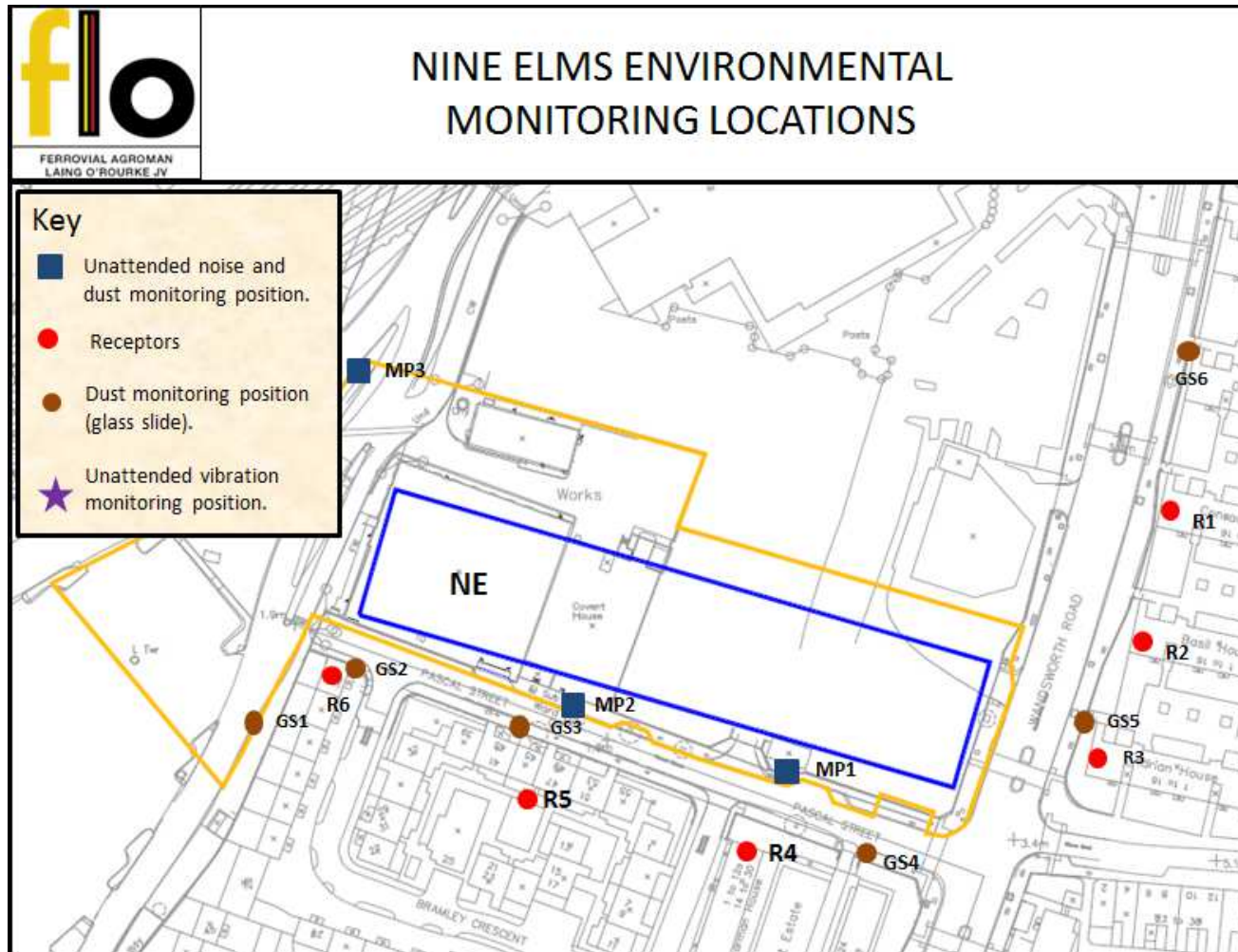


The Gantry crane will sit on rails located on top of foundations running in parallel to the capping beam being built on top of the secant walls along both the northern and southern elevations.

**Used for :** lifting operations related to excavation works and the installation of precast beams instead of Crawler cranes.

- **Benefits :** Fully electric - no engine = no fumes  
Less visual, lower noise emissions

# Nine Elms Noise Monitoring Locations



# Your Feedback

You Suggested	We Did
<p>FLO participate and provide assistance with the landscaping scheme at the Wyvil Estate</p> <p>We should collaborate with other contractors to reduce the impact of construction work in the area on the local community</p>	<p>Flo are providing benches to the community which we will deliver as requested. We will also provide seeds</p> <p>We have combined logistics meeting with the other local contractors to ease congestion, disturbance and CO2 emissions e.g. VNEB Meeting</p>
<p>Engagement with Local Schools</p>	<p>Visit to Griffin Primary School last 21 Feb. Follow up visits to be arranged</p>
<p>Opportunities for local businesses</p>	<p>LEAP group quarterly meetings area partnerships continue</p>

# Engagement Opportunities

- Open day for the NLE project held at our Battersea site to provide an insight to our stakeholders . Attendance was high – 84 participants
- Talent Match event – a full day of presentation and activities arranged for young people who are out of work & seeking opportunities
- Careers fairs/ school engagement



## Ways to contact us

- It is important that calls are logged through the NLE 24/7 helpdesk on 0343 222 2424 (Option 1)
- Email [nle@tfl.gov.uk](mailto:nle@tfl.gov.uk)
- Regular Drop In sessions
- Please visit:

<https://tfl.gov.uk/northern-line-extension>