

Northern Line Extension

Battersea

Community Liaison Group

06.07.2015



NLE Project Draft timetable

Year	Key milestones
2014	Transport and Works Act Order decision, Design & Build contract signed
2015	Agreement on Code of Construction Practice Part B, Start of main works at all sites
2016	Start of Tunnel Boring Machines
2017	Completion of tunnelling
2018	Fit out of new stations, Kennington shafts complete inc reinstatement, work at Kennington station complete
2019	Testing, commissioning, trial operations
2020	NLE complete and in service

Battersea Progress



Year	Key milestones
Mar - Jun 15	<ul style="list-style-type: none">• Survey (Unexploded Ordnance). Radar detection from ground level• Construction of conveyor foundations• Hoarding Survey• Hoarding Installation• Preparation of site for sheet piling operations• Continue diaphragm walling
July - Sept 15	<ul style="list-style-type: none">• Install conveyor to Jetty• Install tie-backs around sheet pile wall• Install and commission Bentonite Plant• Complete 4 storey office installation• Provide access road around Crossover Box• Complete services laying to site in Battersea Park Road (necessitates implementation of traffic management)• Commence diaphragm walling operations
Oct - Dec 15	<ul style="list-style-type: none">• Commence bored piling and plunge column installation• Install new site access road and pedestrian crossing (continuation of traffic management scheme)• Capping beam construction• Commence excavation operations inside the Crossover Box



Battersea Crossover Box



Battersea Crossover Box sheet piling operation completed



Battersea Progress Update



Main Office Establishment



Removal of obstructions within Station Box left behind from previous industrial use



Battersea Progress Update



Ongoing Conveyor Installation



Removal of obstructions left behind from previous industrial use



Battersea Upcoming Works

Diaphragm Wall Operations (Reinforcement cages being lifted into wall panel)

Plunge Column Installation (Guide assembly being lowered into bored pile excavation)



Thank You

Measuring & Monitoring

- Damage assessment is being carried out for detailed monitoring scope.
- Installation of levelling points have been installed at ground level at Battersea and baseline monitoring is ongoing
- We are currently liaising with building owners prior to the installation of monitoring equipment.
- We envisage that the monitoring equipment will comprise of Building Research Establishment (BRE) studs (structure levelling studs) and 3D geodetic prisms prior to piling commencing in August/September

Monitoring techniques

Buildings – Real time data:

3D geodetic prisms



Automatic Total Station (ATS)



Prisms

ATS: an electrical/optical instrument used in modern building construction to measure slope distances from the instrument to a particular point.



Monitoring techniques

Buildings – Manual data:

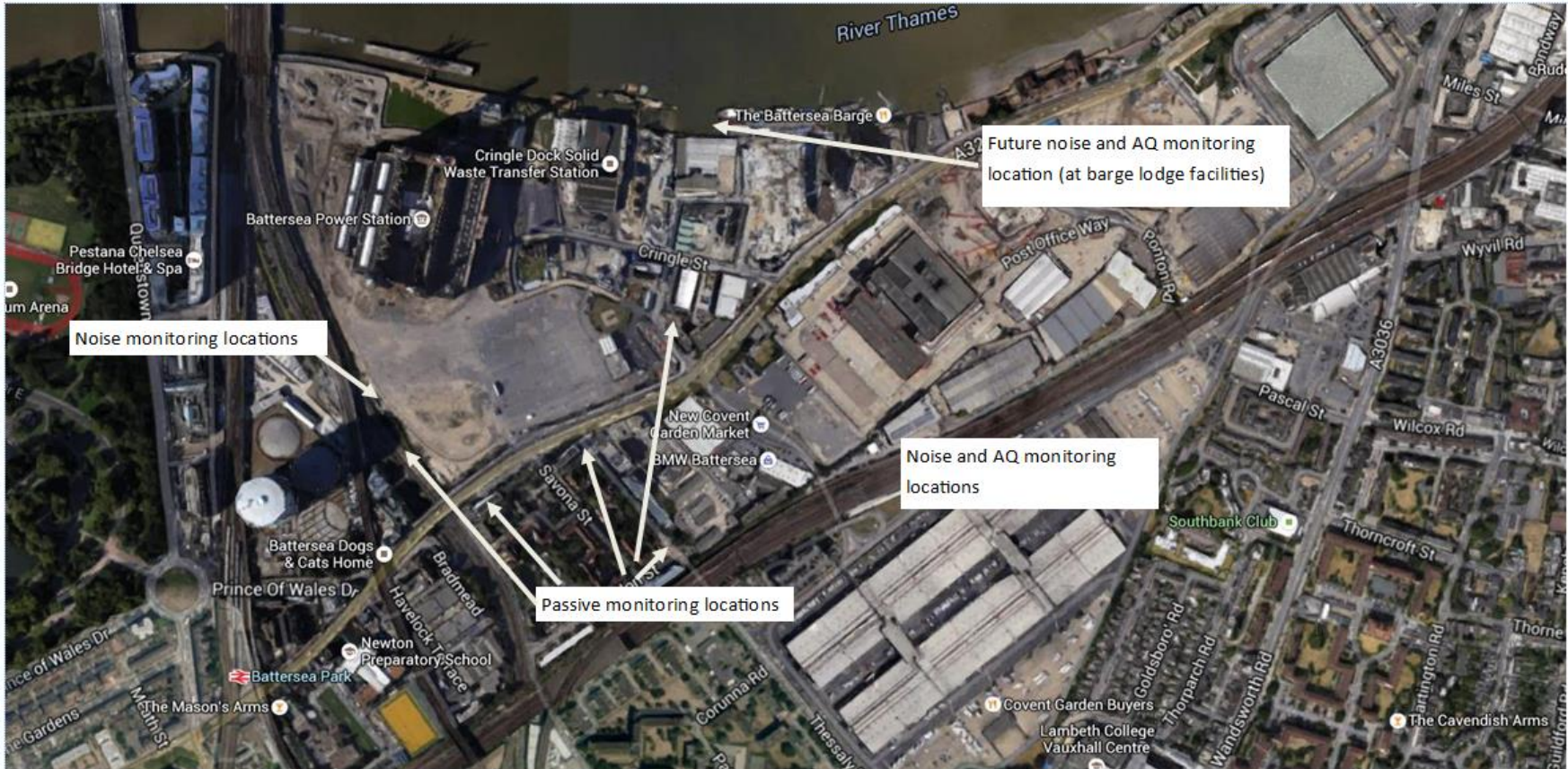
BRE studs (structure levelling studs)



Construction Noise

- Noise (and air quality) monitors will be installed on the site hoarding. This will complement the monitoring currently being undertaken.
- Noise predictions show that an acoustic shed will be needed to minimise the noise associated with 24/7 tunnelling works.
- For all other activities a standard height hoarding (2.4m) will provide sufficient screening to meet the requirements of the NLE Construction Noise Mitigation Scheme

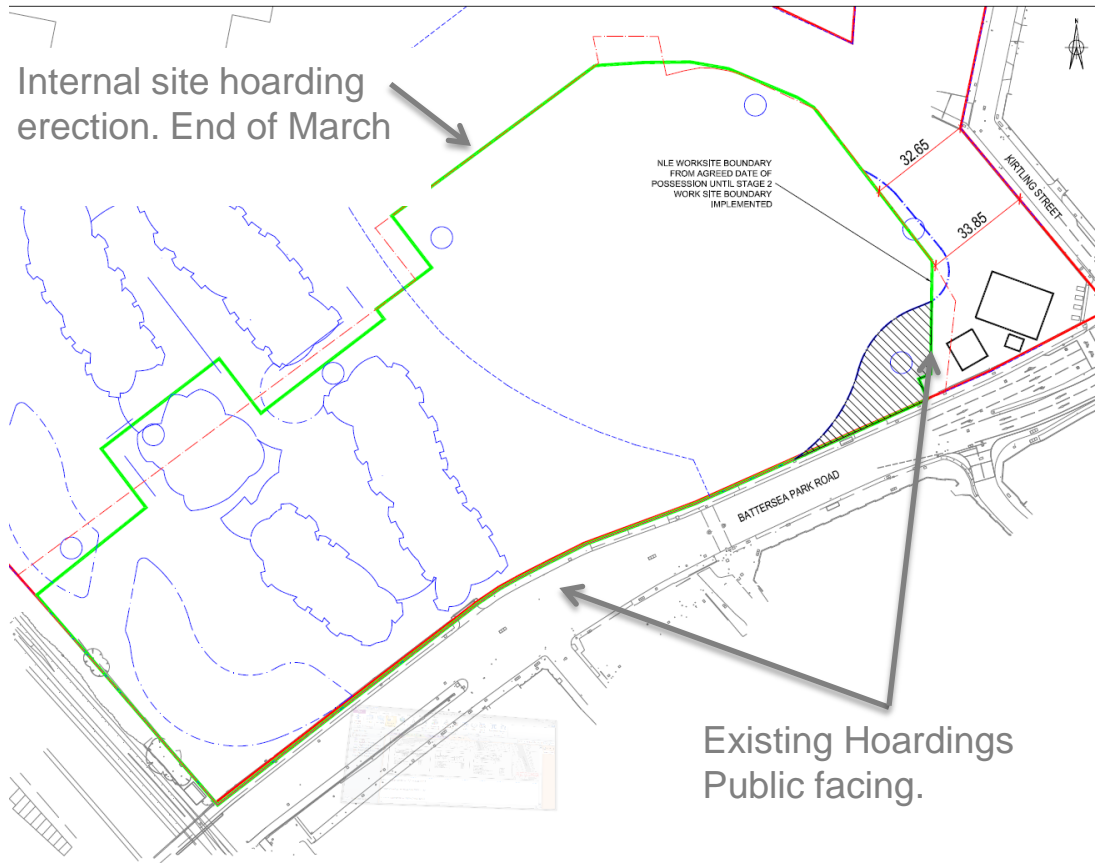
Construction Noise Monitoring



Northern Line Extension
Battersea Station Site
Site Entrance



Hoardings at Battersea



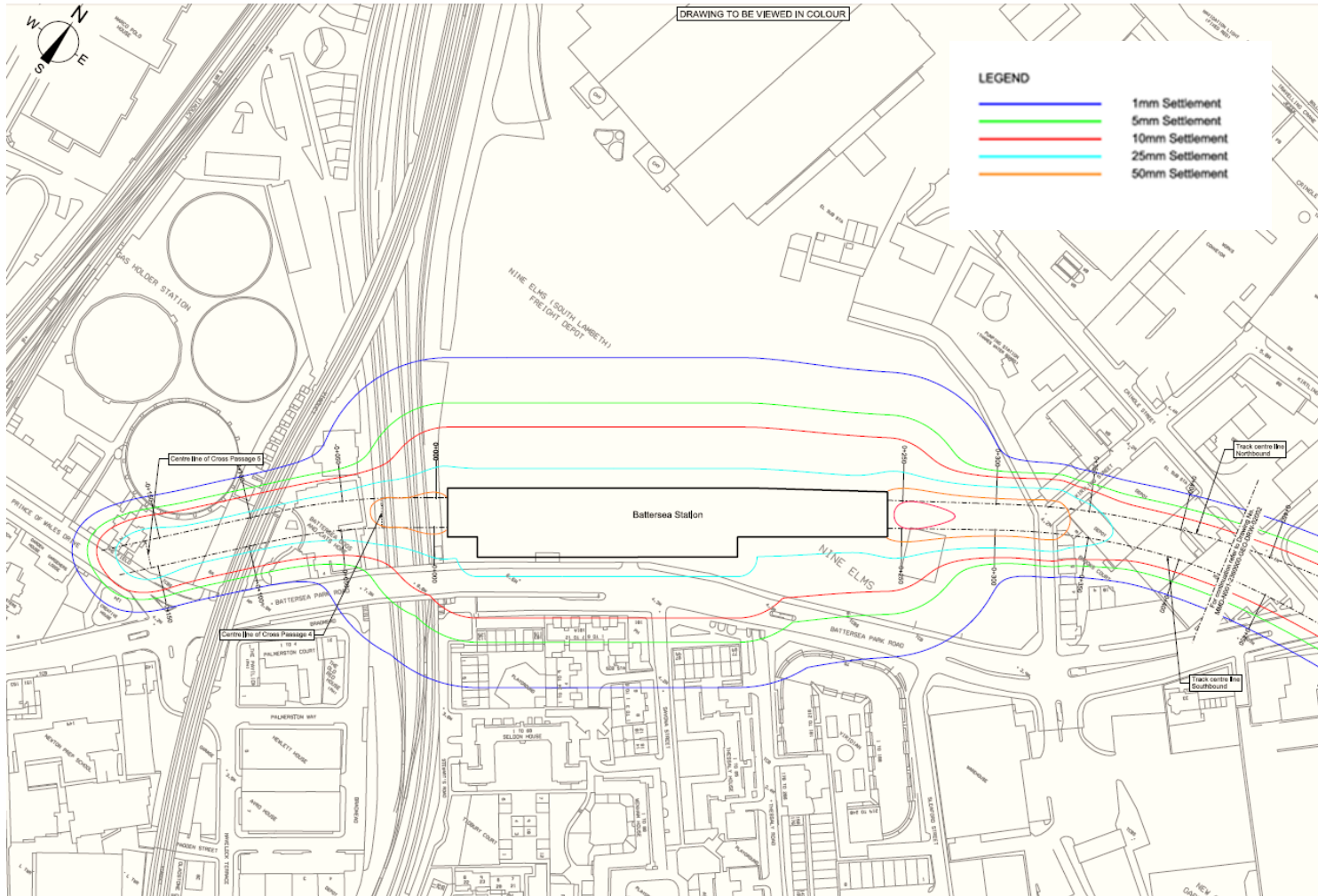
- Existing BPS hoarding are to be updated with relevant NLE information
- 2.4 metres high
- Corporate TfL standards followed
- Helpdesk contact details to be presented at all hoardings
- Installation of graphic work ongoing during 2015



Defect Surveys Battersea

- Defect Surveys to be undertaken by CPM (qualified chartered building surveyor) on properties predicted to experience 1mm or more settlement.
- TfL have is to sent initial letter to affected properties
- Surveys to start as early as July 2015 in some areas not Battersea
- Where necessary, a second survey will be undertaken in the event of any claims for damage
- Written and photographic record and a copy will be available to the property owner.

Settlement Contours Battersea



Code of Construction Practice Part B

- The Code of Construction Practice was approved by the London Borough of Wandsworth in May
- The requirements of the Code of Construction Practice parts A and B have been incorporated into the FLO practices and procedures
- Core working hours are from

08:00 to 18:00hrs Monday to Friday

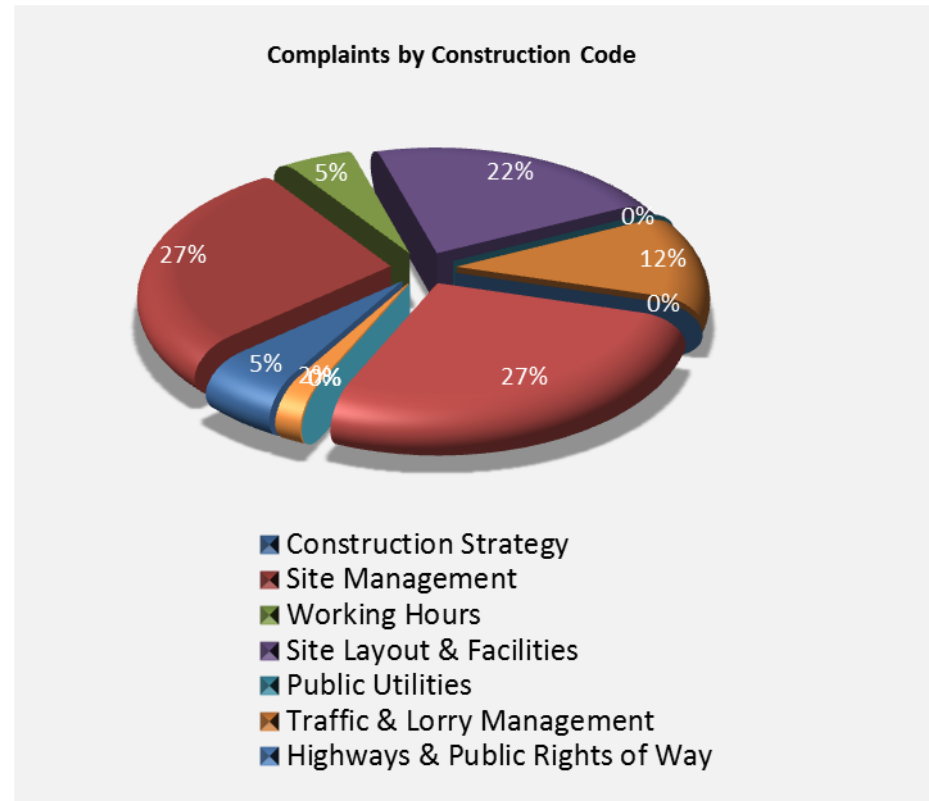
and

08:00 to 13:00hrs on Saturdays



Complaints / Enquiries Summary

- 7 NLE helpdesk registered complaints for Battersea area
- 100% Closed
- Vibration and noise are main topics at Battersea
- Coordination with other developers ongoing
- Feedback received on complaints handling positive but needs to improve
- Detailed list of complaints and enquiries with Local Authorities



Updates and newsletters

- Monthly Activity Updates sent out 22 April & 2 June.
- Via letter drop and emailing
- NLE Quarterly newsletter to be distributed mid June
- Drop in session to be held at Rose Centre July 14-15 Organised by Nine Elms on the Southbank
- Individual meetings have been held with residents and businesses associations.

Nine Elms Vauxhall Partnership

open days

Tuesday 14 July, 3pm-8pm
Wednesday 15 July, 8am-6pm

ROSE Community Centre, Ascalon Street
Battersea, London SW8 4DJ

nineelmslondon.com/opendays
Follow us @nineelmsteam

Directions
Bus: P13 stops directly outside the ROSE Centre (alight at Ascalon Street)
 152 or 344 along Battersea Park Road/Nine Elms Lane (alight at Sileford Street)
 77 or 69 along Wandsworth Road (alight at Lamball Park) & walk up Thea's Way Road
Cycle: Secure bike parking on site. Battersea Cycle Hire

Battersea Updates / Newsletters



Delivered April 22



Northern line extension

ACTIVITY UPDATE

April / May 2015

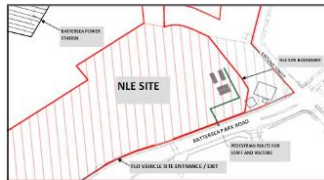
Battersea Station – Planned Works April / May 2015

The Northern line extension (NLE) works have now commenced at the Battersea site and we would like to let you know of activity happening over the next four weeks.

We will commence site clearance to prepare for the excavation of the main station box. This includes a number of surveys including radar detection surveys and an archaeological survey for any historical remains. We will also start construction of the conveyor belt that will transport excavated material to a jetty, where spoil will be loaded onto barges for removal down river. The site boundaries have been completed and we will also upgrade the site hoardings overlooking Battersea Park Road with NLE details, including the removal of the two large advertising billboards. A four storey site office and welfare accommodation will be installed within the site.

In agreement with TFL and the London Borough of Wandsworth, during this period vehicles will be accessing site from the west, off Battersea Park Road, near the Battersea Dogs and Cats Home and exiting, turning left and driving east towards the Vauxhall Gyrotory. The drawing below shows our entrance and exit off Battersea Park Road.

Our core working hours are Monday to Friday 08:00 to 18:00 and Saturday from 0800 to 1300



We will endeavour to minimise disturbance and will manage the work in accordance with the Code of Construction Practice, including the control of noise, vibration and dust using best practicable means. Traffic marshals will be on site to help with traffic and vehicle access and signage will be installed to manage the changes mentioned above.

If you have any concerns or queries, please contact us at nle@tfl.gov.uk or call our 24/7 helpdesk on 0343 222 2424

Ref: FLO-N205-2360000-COM-NTF-00001

nle@tfl.gov.uk
0343 222 2424
tfl.gov.uk/northern-line-extension

Delivered June 2



Northern line extension

MONTHLY UPDATE

June 2015

Battersea Station

Thank you for your patience while we continue the setup of the Northern line extension (NLE) Battersea station worksite. It is progressing well and we would like to let you know what has already been achieved and the main activities planned for June.

In May we started the excavation of the future station box from where the tunnel boring machine will be launched next year. We are also removing concrete obstructions which are eight metres in ground and constructing a platform that provides a robust and stable working area.

We have now started sheet piling, with a view to starting piling works in late August. Sheet piling installing a steel sheet wall around the excavation ahead of the construction of concrete pillars (3 work can be noisy, but we will keep disturbance to a minimum by using the latest noise mitigation technology and best practicable means of work.

One of the main features of the NLE is that nearly 80% of the removed material will be transported reducing a significant number of Heavy Goods Vehicles (HGVs) from London's roads. At the moment taking excavated material away by road, averaging around 50 loads a day, until the construction conveyor system is completed. This system will transfer the excavated material from site to the jetty. The barges will travel from the jetty and take the spoil to a disposal point in Ingrebourne, E also taking special care to ensure that the Peregrine Falcons, resident on the site, are not disturbed near their nesting tower.

The photographs overleaf show how our main excavation has progressed and how we are treating materials.

We will endeavour to minimise disturbance and will manage the work in accordance with the Code of Construction Practice, including the control of noise, vibration and dust using best practicable means.

Our core working hours are: Monday to Friday 08:00 to 18:00 and Saturday from 0800 to 1300

Your feedback is important to us. The next Battersea Community Liaison Group meeting will take place on July 6. Please do get in touch if you have any questions about the works or would like to attend the Community Liaison Group meeting.

If you have any concerns or queries, please contact us at nle@tfl.gov.uk or call our 24/7 helpdesk on 0343 222 2424

Ref: FLO-N205-2360000-COM-NTF-00001

nle@tfl.gov.uk
0343 222 2424
tfl.gov.uk/northern-line-extension



The excavation for the future station is taking place at Battersea. May 2015



Concrete segregation. May 2015. This shows where we are dividing material in order to recycle and use again on site.

Ref: FLO-N205-2360000-COM-NTF-00001

nle@tfl.gov.uk
0343 222 2424
tfl.gov.uk/northern-line-extension



NLE Newsletter June 2015



Northern line extension

Issue 3 • June 2015



Prep work starts at all NLE sites

Work to prepare the Kennington Green, Kennington Park, Nine Elms and Battersea Power Station NLE sites began in March. This follows the approval of the Code of Construction Practice Part B by local authorities. The Part Bs are tailored to the nature of the works planned at each site.

This is a major accomplishment for the project team and has been achieved through hard work and collaboration with the local authorities as well as very useful feedback from residents along the route.

Work in the last three months at these sites includes:

- Clearing the site
- Setting up for new site accommodation
- Checking the ground for obstruction
- Archaeological and ordinance surveys
- Utility diversions
- Installing temporary hoardings
- Implementing traffic management schemes

Kennington

We are creating two permanent shafts at Kennington Park and Kennington Green to provide ventilation, cooling and emergency access to the tunnels.

At Kennington Green, temporary fencing has been installed and site offices have been established at the Montford Place support site. Utility diversion works are ongoing and the traffic is being managed accordingly. We have been working closely with utility services and the local authorities to ensure we keep disruption to a minimum.

Work over the next three months includes:

- Continuing utility diversions
- Putting up permanent hoarding
- Tree removal and lopping



Utility diversions

At Kennington Park, we have been busy clearing the site and conducting archaeological and ordinance surveys. Diversion of utilities in this area has also started, including diversion of a major gas main.

Work over the next three months includes:

- Relocating the pedestrian entrance at Bishops House Nursery
- Continuing utility diversions
- Installing permanent hoardings
- Demolishing the Lodge

Nine Elms

We are building a new Underground station at Nine Elms near Pascal Street and Wandsworth Road.

The boiler house on site has now been demolished. Material from the demolished building is now being re-processed to use in the piling mat (which is the base from which the excavation of the station box is formed)

Works over the next three months include:

- Power diversions and installation of a new power feed to the site
- Delivery and fitting out of site offices
- Continuing construction of the piling mat and guide walls
- Demolition of Covent House and Banhams Security building



Demolition of the boiler house



Demolition of the chimney

Community Liaison Groups

The following Community Liaison Groups meet regularly to provide residents, businesses and councillors with an opportunity to find out more about the Northern line extension:

- Kennington Park and Newington
- Kennington Green
- Nine Elms and Oval
- Battersea

- Core Group – An overall liaison group that considers route-wide issues

Residents are welcome. Presentations, minutes and details of upcoming meetings are on our website tfl.gov.uk/northern-line-extension.

Transforming the Northern line

The extension includes more than 3km of new tunnels connecting to the existing Northern line at Kennington and two new Underground stations at Nine Elms and Battersea.

The extension is part of a massive investment programme to transform the Northern line which includes:

- A signalling upgrade which has achieved a 20 per cent increase in capacity through central London
- A 24-hour Tube service on Fridays and Saturdays from September
- Plans to rebuild Tube stations that are critical to improving capacity and supporting regeneration. These include Tottenham Court Road, Bank, Camden Town and Elephant & Castle

Staying in touch

For more information and to register for updates on the scheme, visit tfl.gov.uk/northern-line-extension

You can also email the project team at nle@tfl.gov.uk or call our helpdesk on 0343 222 2424.

Timeline



Skills and apprenticeships



- Skills & Employment Strategy, Delivery Plan for Schools and Young People on-going
- FLO hosted **5 Work Experience Students from Ernest Bevin College**, Wandsworth. Starting 22 June 2015.

Employment/Skills/Diversity on the NLE programme

- FLO is working in partnership with TfL and the local authorities – including the Nine Elms Vauxhall Strategy Board Employment, Training & Business Charter, Wandsworth Chamber of Commerce and Nine Elms Supply Chain
- Make sure employment/training opportunities are advertised within the job opportunity/brokerage schemes operated by Southwark, Lambeth & Wandsworth councils
- Encourage job starts for workless people in London, placement & taster positions, apprenticeships, skills development for staff, engagement with schools



Jobs and Business Opportunities



- FLO has created a working group with Local Authorities and local brokerages to ensure opportunities are advertised and promoted locally
- **LEAP Group; Local Employment and Procurement Group NLE**
- Small and medium business had the opportunity to meet with major contractors at an event in BPSD. FLO in attendance.
- FLO continues to engage with small and medium companies through events and endeavours to recruit / source locally when possible.



Community engagement strategy



- Draft Strategy 6 month Look Ahead.
- Includes community comments and forecast activities
- **6 months look ahead include:**
- Engagement with local groups
- Community Drop-in sessions
- School activities have started. Sacred Heart School
- Identification of new resident groups within the Battersea area



Ernest Bevin College Student . Work Experience



Consents



Key approvals granted since the last CLG meeting

Code of Construction Practice Part B (planning condition 7) – all sites	L B Lambeth, Wandsworth
All sites – application to discharge planning condition 10 - Archaeology – all sites	L B Lambeth, Wandsworth
Approval of the Yellow Box Junction (planning condition 18) – Kennington Park	LB Southwark
Marine approvals (TWAO protective provisions) - Battersea	Environment Agency, Marine Management Organisation, Port of London Authority

Current applications under determination

Removal of a single tree (planning condition 5)– Kennington Green	LB Lambeth
Application for the fixing of monitoring to Listed structures (planning condition 11)– Kennington Park and Kennington Green	LB Lambeth and LB Southwark

