



FERROVIAL AGROMAN
LAING O'ROURKE JV

Northern Line Extension

Battersea

Community Liaison Group

16 January 2018

Delivering the Northern line extension with

ferrovial
agroman



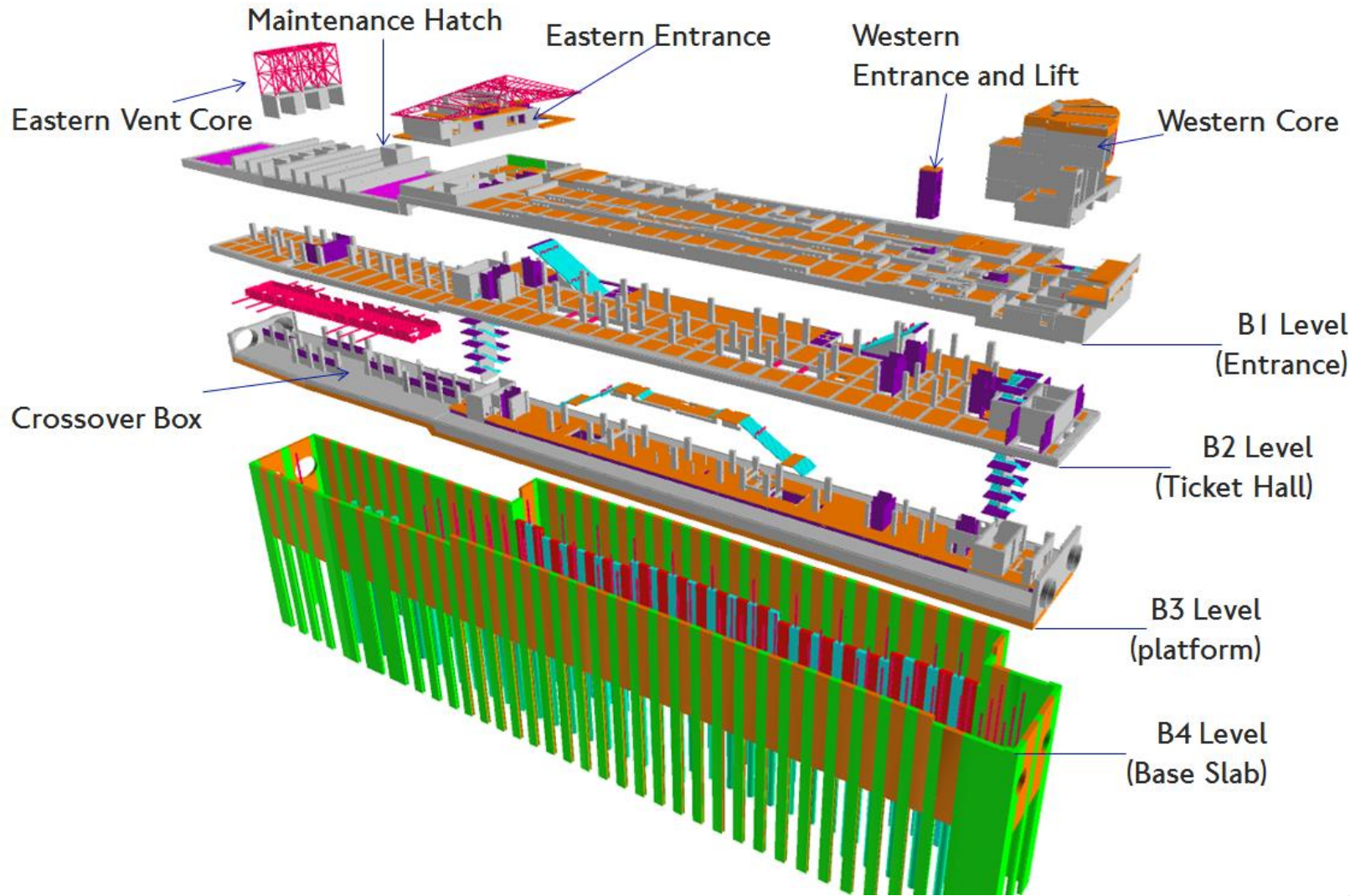
MAYOR OF LONDON



TRANSPORT
FOR LONDON



Battersea Power Station Update

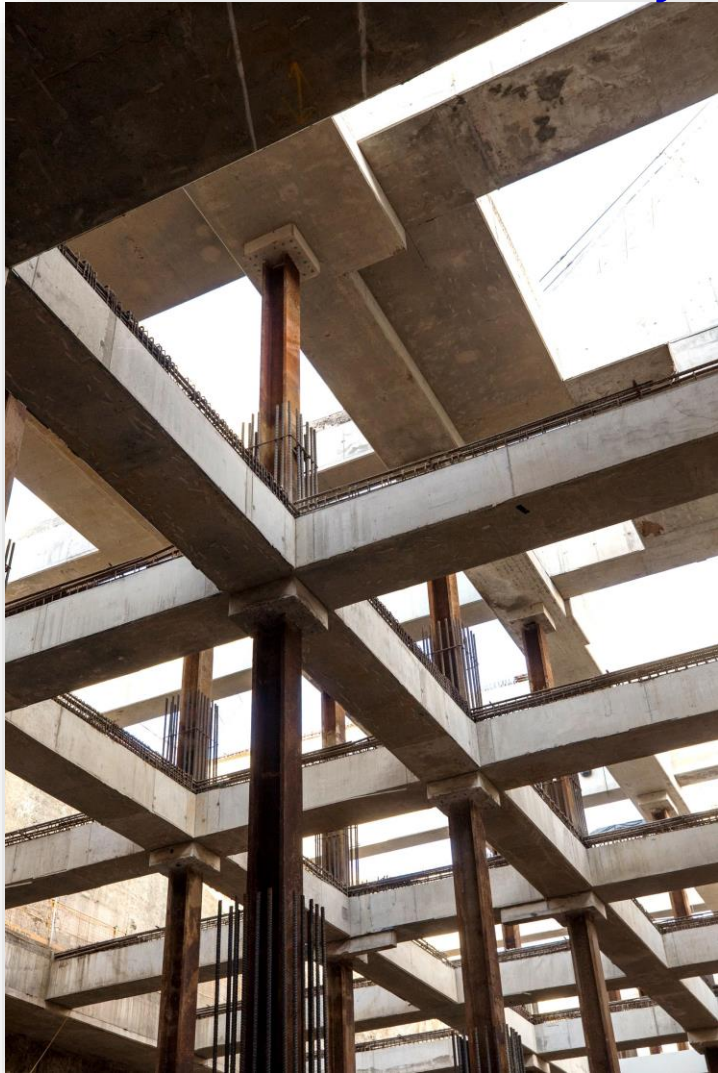


Battersea Power Station: Progress Update

October 2017 – January 2018



FERROVIAL AGROMAN
LAING O'ROURKE JV



Ticket Hall Level (B02)

Primary Works 100% Complete

- 1645 Tonnes Reinforcement
- 4046 m³ Concrete
- 4 number permanent props
- 4 number temporary props

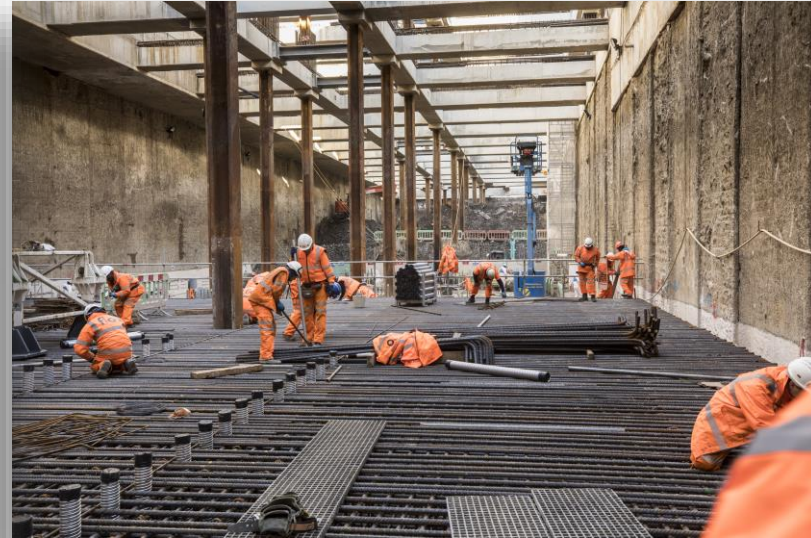
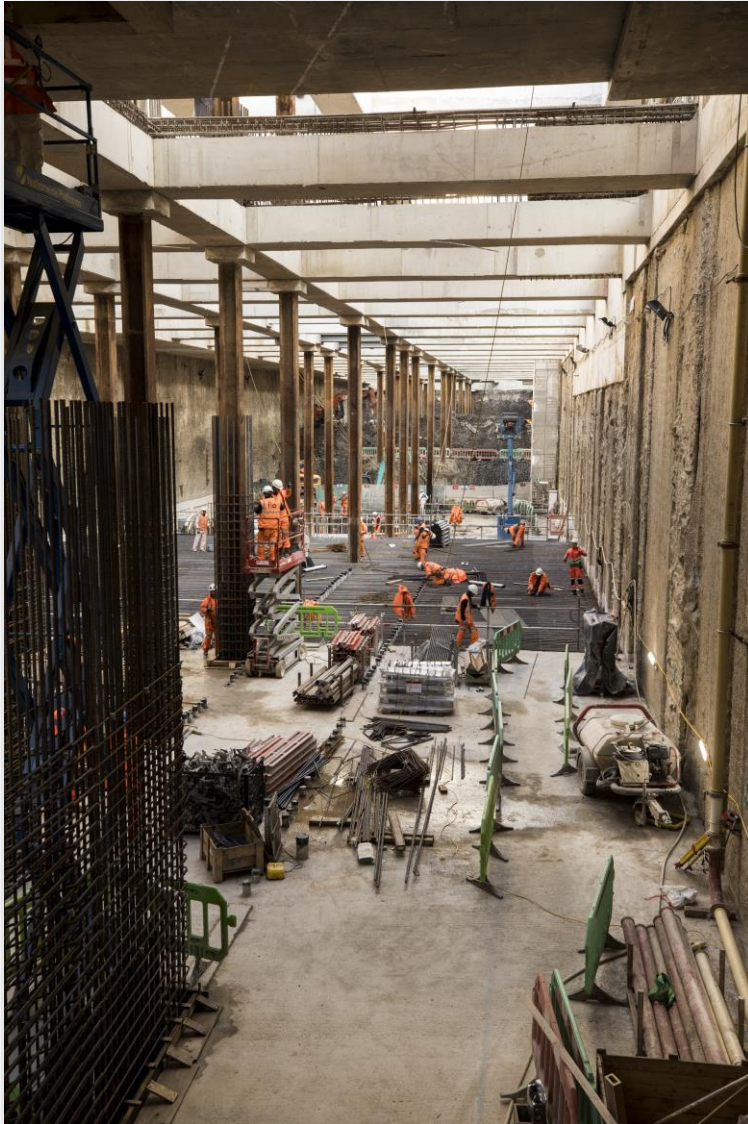


Battersea Power Station: Progress Update

October 2017 – January 2018



FERROVIAL AGROMAN
LAING O'ROURKE JV



Under Platform Level (B04)

Primary Works 50% Complete;

- 1125 Tonnes Reinforcement
- 3080m³ Concrete
- 1 of 2 number tower cranes installed
- Excavation Completed.

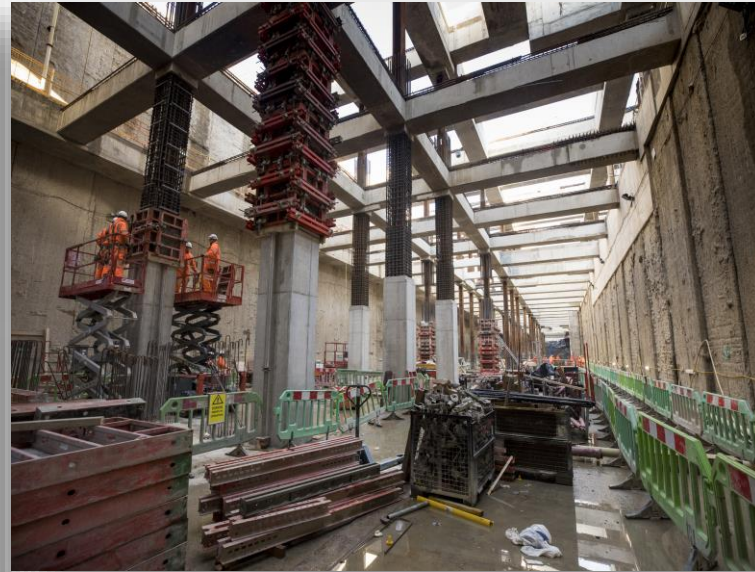
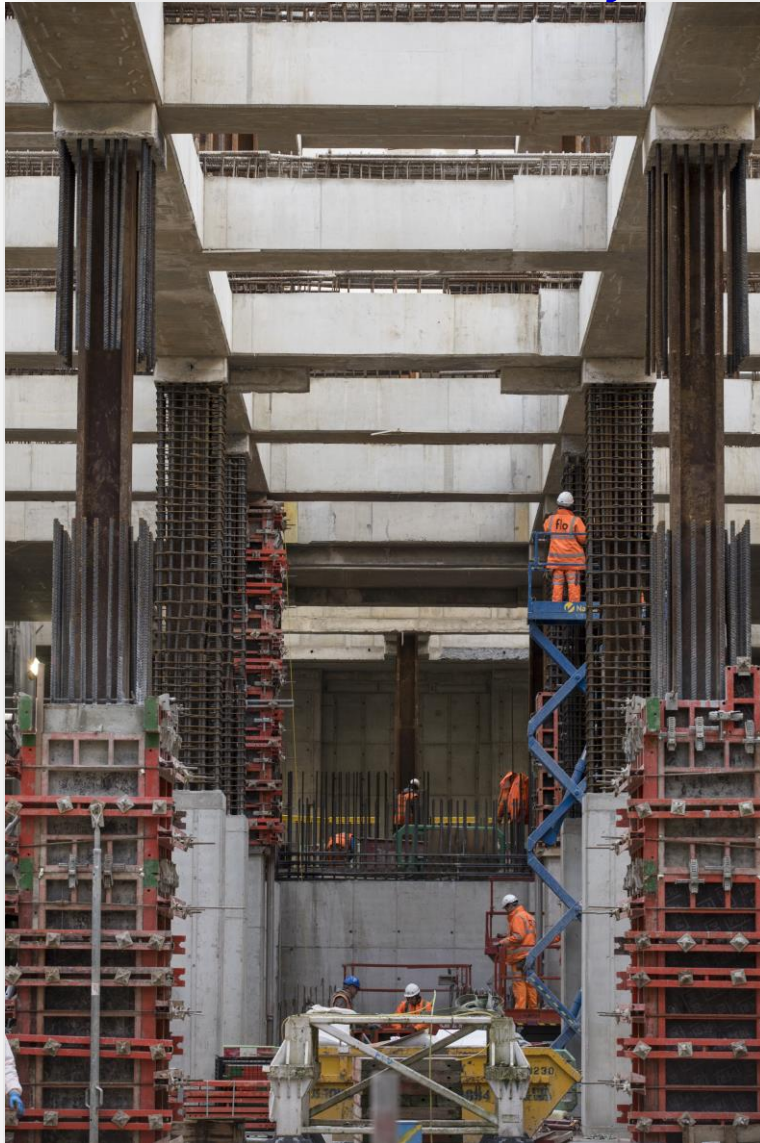


Battersea Power Station: Progress Update

October 2017 – January 2018



FERROVIAL AGROMAN
LAING O'ROURKE JV



B04– B02 Columns and Walls

- Complete 248 Tonnes Reinforcement
- 302 m³ Concrete
- 6 Columns Cast back up to the B02 Level.
- Recommended within the Cross Over Box



Battersea Power Station: Lookahead



FERROVIAL AGROMAN
LAING O'ROURKE JV



- Commence removal of conveyor systems – Feb to March '18
- Commence Delivery of Station Lattice Floor Planks – Feb '18
- Second Tower Crane Arrives – Feb '18
- Commence Delivery of Station Platforms – March/April '18
- Commence the removal of the Temporary Props from the Cross-Over Box – March / April '18

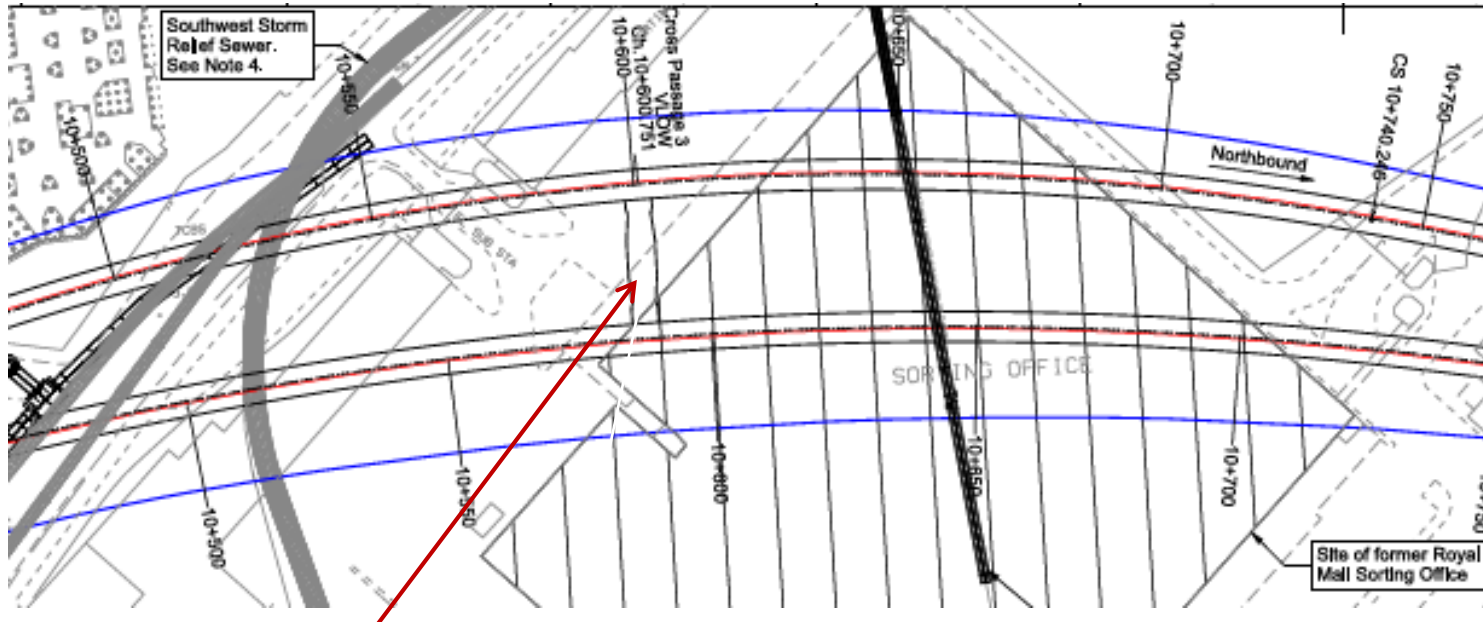


Battersea Power Station: Lookahead

Upcoming Work – Cross Passage 3



FERROVIAL AGROMAN
LAING O'ROURKE JV



Cross Passage 3 – Feb to May

- Link between the 2 running tunnels to provide emergency route and fire escape between the main tunnels.
- Excavation by hand mining techniques
- Highly unlikely to cause any disruption at the surface



Final Barge 15-01-2018



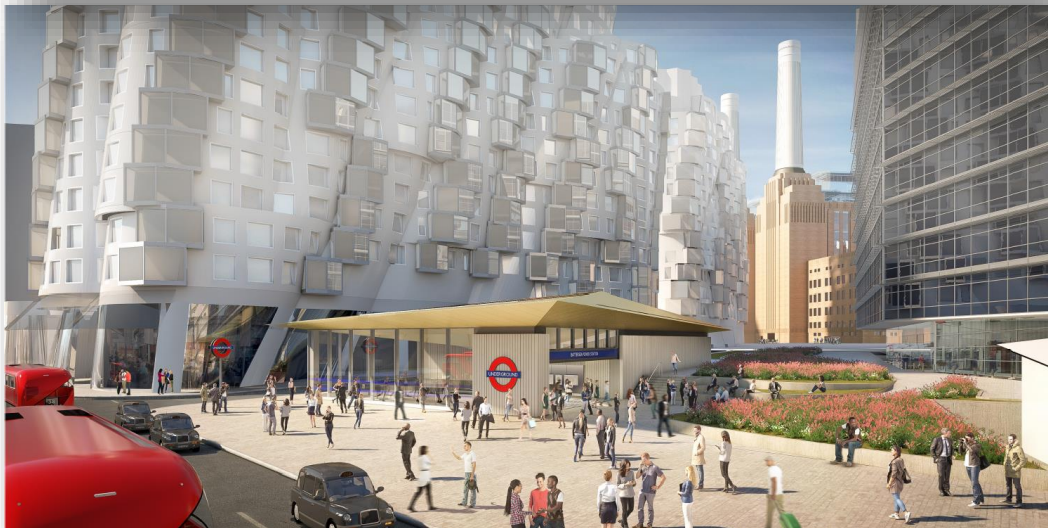
FERROVIAL AGROMAN
LAING O'ROURKE JV

Final Totals

- 845,299 Tonnes
- 701 barges
- 2'000 Tonnes of CO2 saved
- 47'000 Muck Away lorries taken off London's Streets



Battersea Power Station Eastern Entrance Planning Application



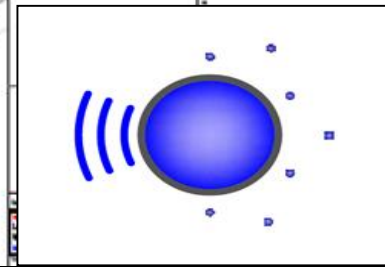
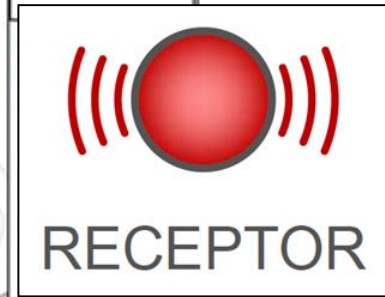
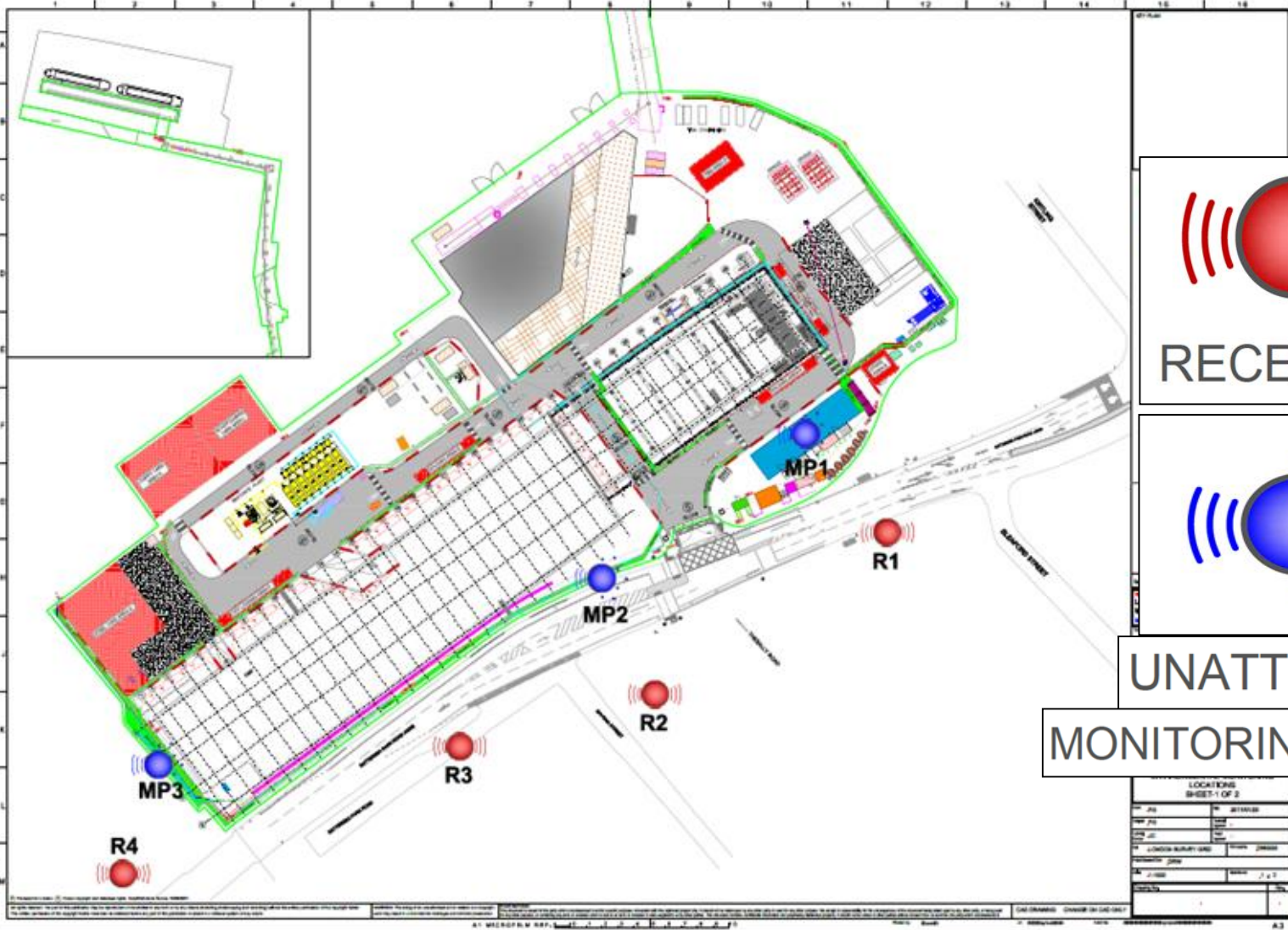
Application for Eastern
Station Entrance
approved by Wandsworth
Council on 14th
December 2017
(submitted July 2017,
consultation September
2017)

Environmental Monitoring Locations

Noise Monitoring stations and sensitive receptors



FERROVIAL AGROMAN
LAING O'ROURKE JV



UNATTENDED
MONITORING POSITION

LOCATIONS	
SHEET 1 OF 2	
NO.	DATE
MP1	
MP2	
MP3	
MP4	
R1	
R2	
R3	
R4	



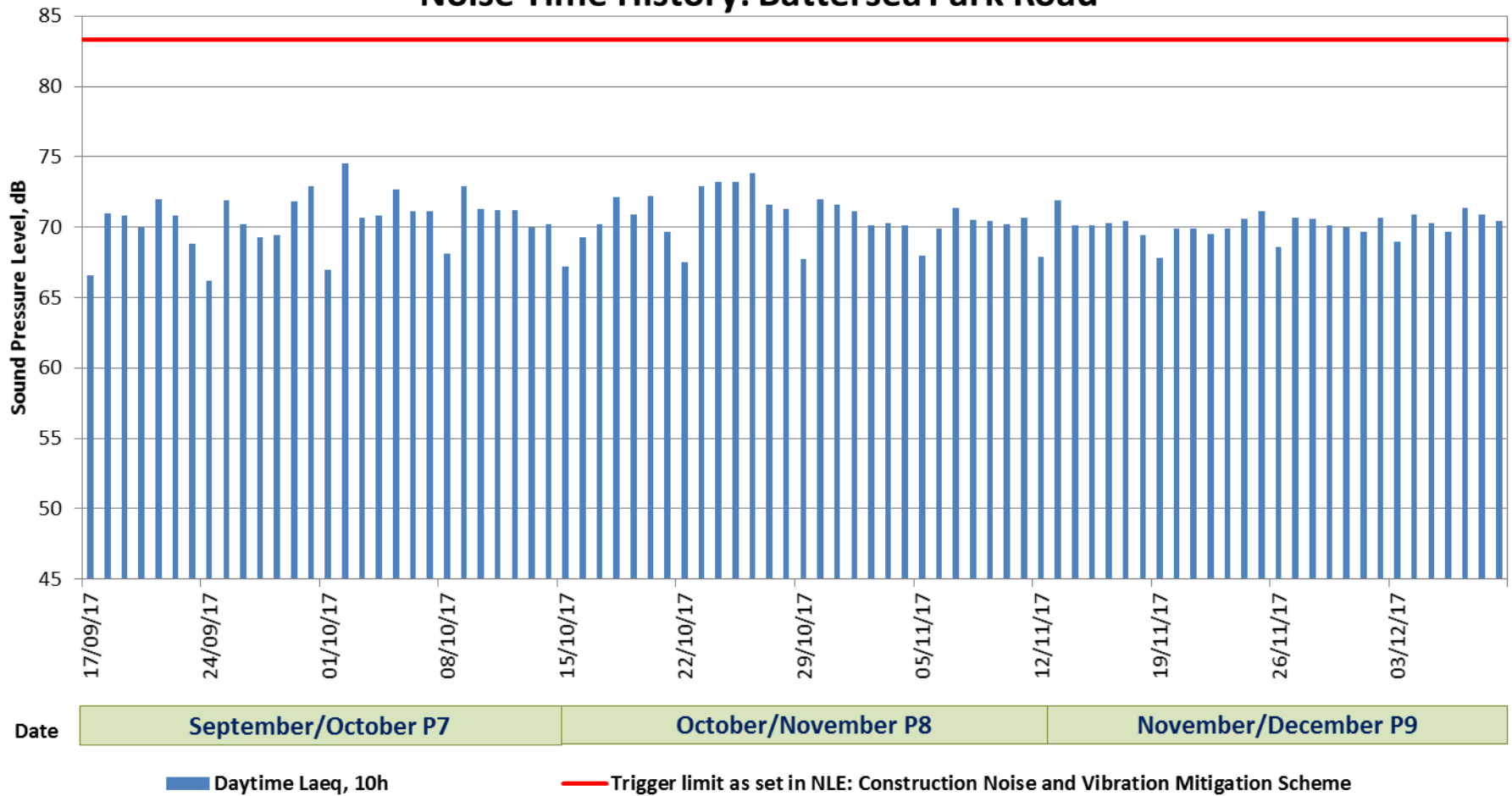
BT Monitoring Oct – Dec 2017



FERROVIAL AGROMAN
LAING O'ROURKE JV

Site monitor dust monitoring

Noise Time History: Battersea Park Road

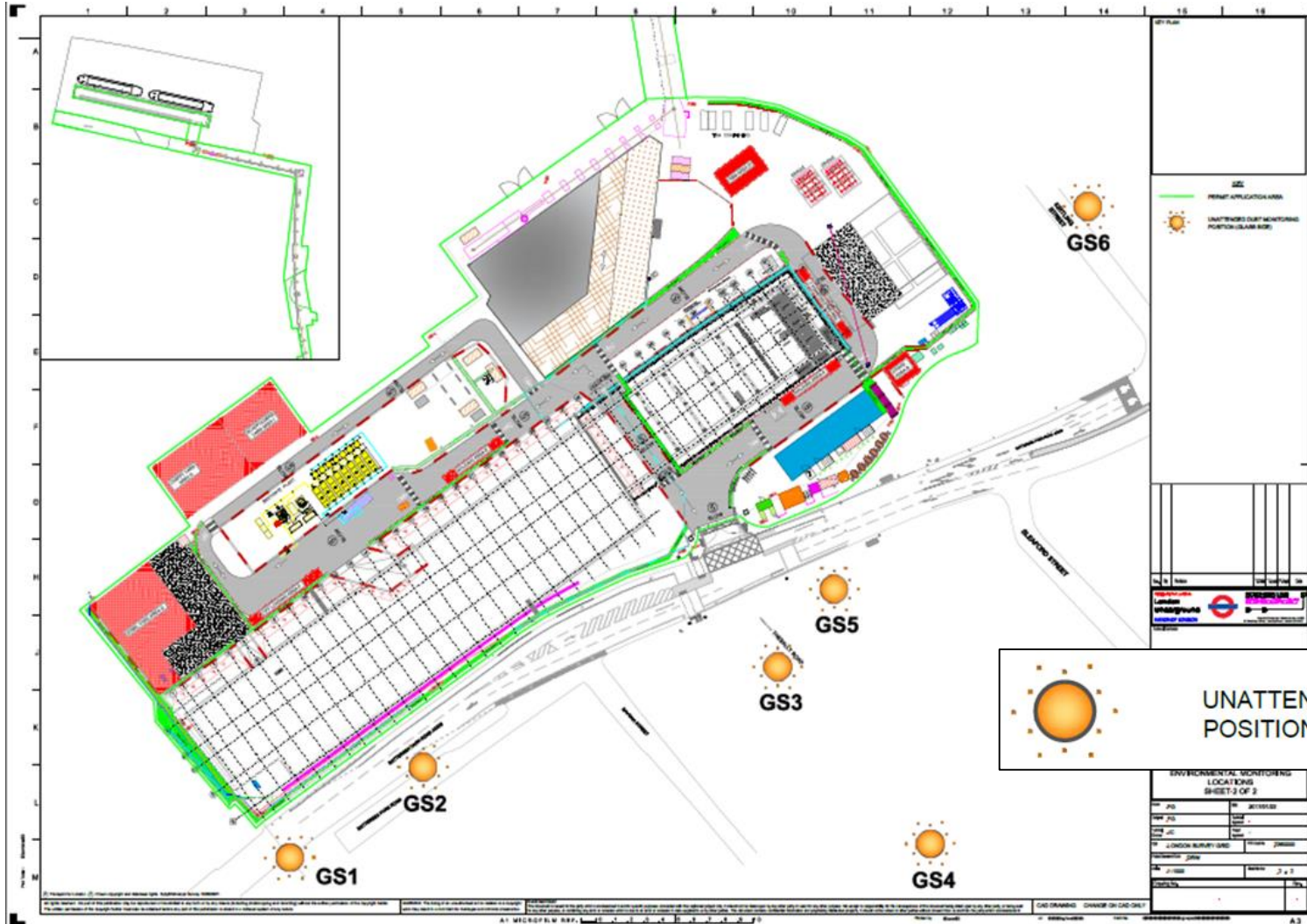


Environmental Monitoring Locations

Glass slide locations



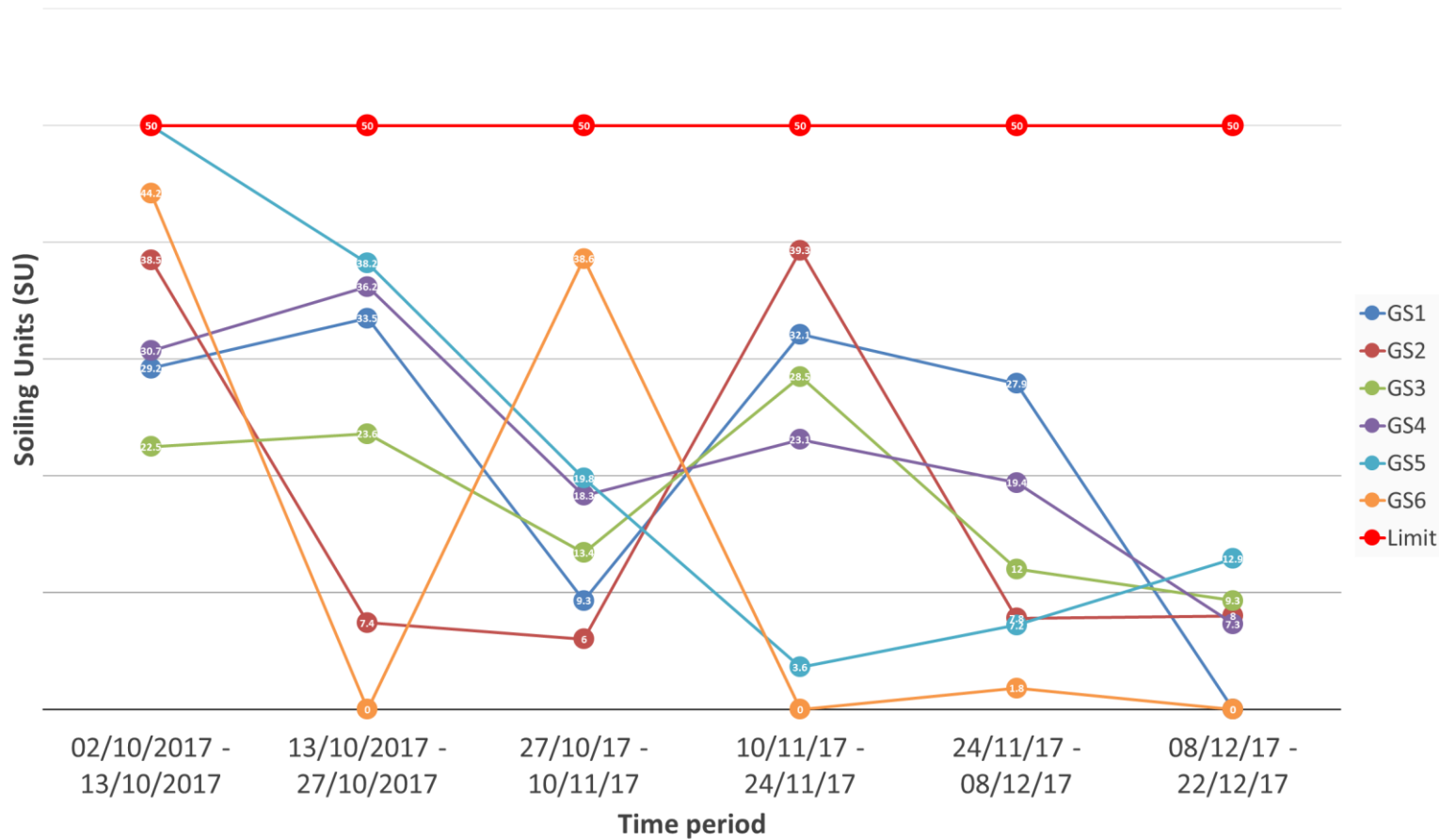
FERROVIAL AGROMAN
LAING O'ROURKE JV



BT Monitoring Oct – Dec 2017

Dust slides results – Passive AQ monitoring

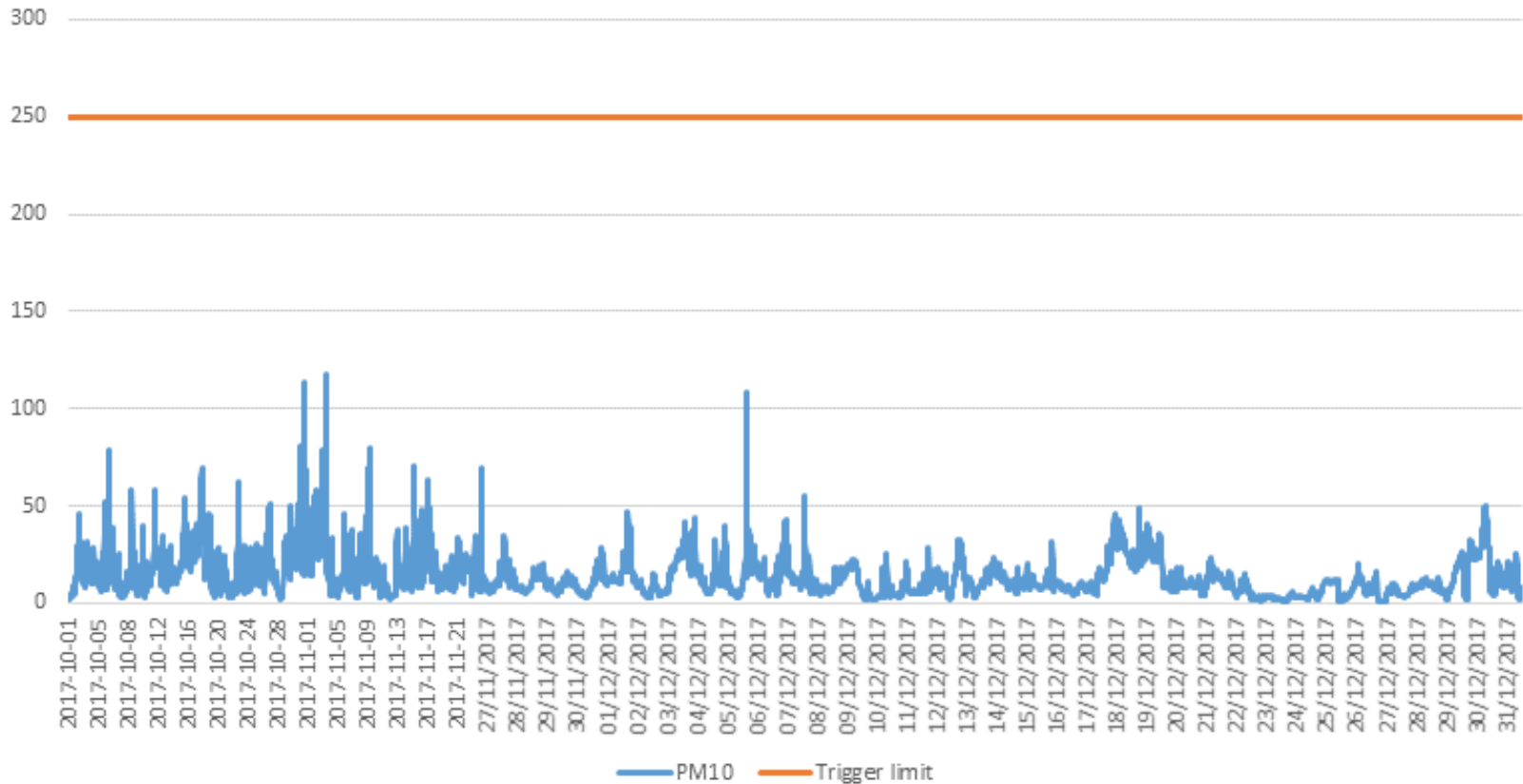
NLE - Battersea - Fortnightly Passive AQ monitoring (glass slides)



BT Monitoring Oct – Dec 2017

Site dust monitoring

Battersea Park Road monitor - OCT to DEC PM10 Values



BT Monitoring Oct – Dec 2017

For the full report consultation please visit the following link:

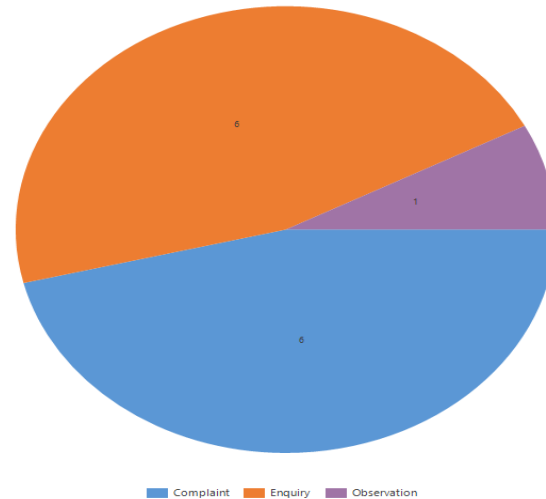
<https://tfl.gov.uk/corporate/publications-and-reports/northern-line-extension>

You will find under the Environmental monitoring reports tab both the “Unattended Noise monitoring reports” and the “Passive air quality monitoring reports”.

Complaints & Enquiries Summary

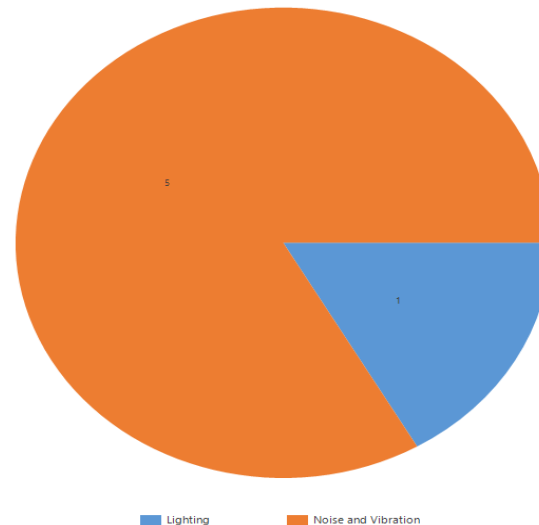
Case Type at Battersea (2017/2018, P7-P10):

- Total: 13 cases**
- Enquiries: 6 (46%)
 - Complaints: 6 (46%)
 - Observation: 1 (8%)



Complaint Type at Battersea (2017/2018, P7-P10):

- Total: 6 complaints**
- Noise and Vibration: 5 (83%)
 - Lighting: 1 (17%)



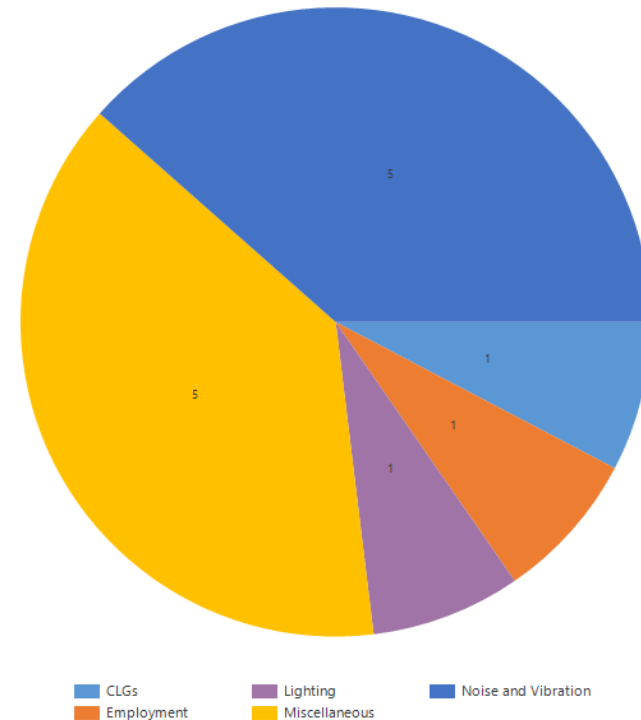
Complaints & Enquiries Summary

Open / Closed cases at Battersea (2017/18, P7-P10):

- Total:** 13 cases
- Active: 0 (0%)
 - Resolved: 13 (100%)

Enquiry Type at Battersea (2017/2018, P7-P10):

- Total:** 13 enquiries
- Noise and Vibration: 5 (38%)
 - CLGs: 1 (8%)
 - Employment: 1 (8%)
 - Lighting: 1 (8%)
 - Miscellaneous: 5 (38%)



Your Feedback

You Suggested	We Did
<p>We look into the quantity of lights on site to see if any can be turned off at night</p>	<p>We worked closely across departments and other contractors in the area to mitigate light pollution. Some lights were removed all together, those that were necessary were dipped / re-angled</p>
<p>An investigation be undertaken to identify if a loud 'buzzing' sound was coming from the NLE site</p>	<p>We offered the resident to come to site to see if she could pin point the sound she was hearing. She accepted and was accompanied to the viewing platform with the PM. This was closed as non NLE related</p>
<p>Look at ways to reduce the noise coming from the muck bin area</p>	<p>The teams were re-briefed about the technique of using the excavator to transfer muck to the bin i.e. less scraping. The vehicle reversing alarms were also switched to white noise</p>



NLE Skills and Employment



FERROVIAL AGROMAN
LAING O'ROURKE JV

- SLNT target for duration of whole project has been achieved
- SLNT 'Back to work' target for Year 3 achieved
- Sacred Heart Catholic School Year 7 Students visited Battersea Site
- 2 NLE 'Route to Work' placements from Peabody / Women into Construction have been employed full time on the NLE – as a Junior Engineer and Trainee Cost Clerk
- NLE received a shortlist award at TFL supplier award ceremony for “Best scheme for increasing those underrepresented in the workplace”
- Award received from 'BEST' Wandsworth for our engagement with local schools and work experience program
- Working with local councils to plan school engagement and career fair events for 2018



Ways to contact us

- It is important that calls are logged through the NLE 24/7 helpdesk on 0343 222 2424 (Option 1)
- Email nle@tfl.gov.uk
- Drop In sessions
- Please visit:

<https://tfl.gov.uk/northern-line-extension>